



Wonderware
InTouch® Modern
Application Guide

All rights reserved. No part of this documentation shall be reproduced, stored in a retrieval system, or transmitted by any means, electronic, mechanical, photocopying, recording, or otherwise, without the prior written permission of Invensys Systems, Inc. No copyright or patent liability is assumed with respect to the use of the information contained herein. Although every precaution has been taken in the preparation of this documentation, the publisher and the author assume no responsibility for errors or omissions. Neither is any liability assumed for damages resulting from the use of the information contained herein.

The information in this documentation is subject to change without notice and does not represent a commitment on the part of Invensys Systems, Inc. The software described in this documentation is furnished under a license or nondisclosure agreement. This software may be used or copied only in accordance with the terms of these agreements.

© 2010, 2014 by Invensys Systems, Inc. All rights reserved.

Invensys is a Schneider Electric company.

Invensys Systems, Inc.
26561 Rancho Parkway South
Lake Forest, CA 92630 U.S.A.
(949) 727-3200

<http://www.wonderware.com>

For comments or suggestions about the product documentation, send an e-mail message to ProductDocumentationComments@invensys.com.

All terms mentioned in this documentation that are known to be trademarks or service marks have been appropriately capitalized. Invensys Systems, Inc. cannot attest to the accuracy of this information. Use of a term in this documentation should not be regarded as affecting the validity of any trademark or service mark.

Alarm Logger, ActiveFactory, ArcestrA, Avantis, DBDump, DBLoad, DT Analyst, Factelligence, FactoryFocus, FactoryOffice, FactorySuite, FactorySuite A², InBatch, InControl, IndustrialRAD, IndustrialSQL Server, InTouch, MaintenanceSuite, MuniSuite, QI Analyst, SCADAAlarm, SCADASuite, SuiteLink, SuiteVoyager, WindowMaker, WindowViewer, Wonderware, Wonderware Factelligence, and Wonderware Logger are trademarks of Invensys plc, its subsidiaries and affiliates. All other brands may be trademarks of their respective owners.

Contents

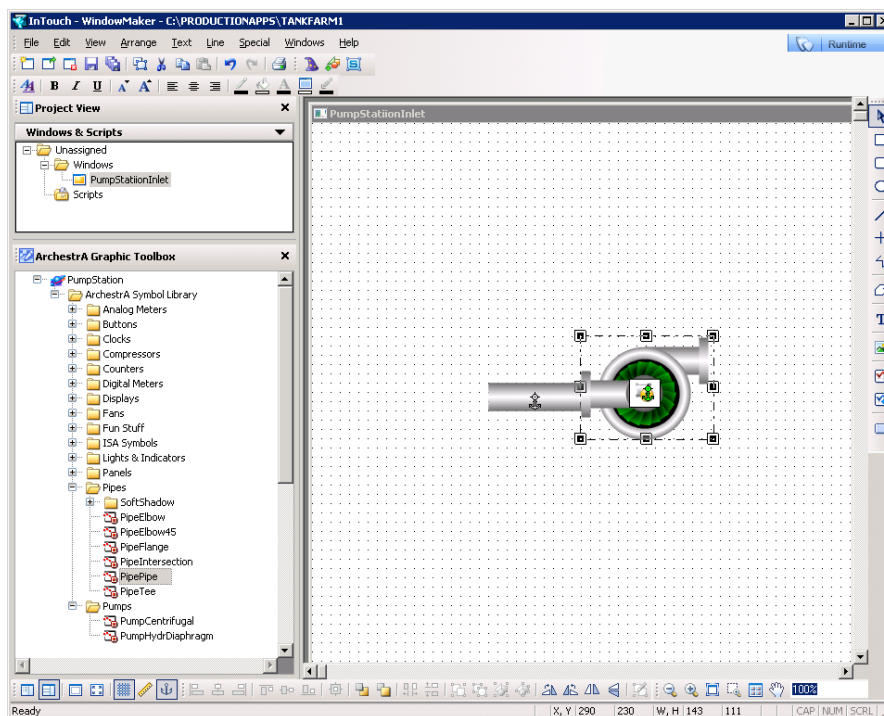
Chapter 1	Introducing InTouch Modern Applications	3
	Working With InTouch Modern Applications	4
Chapter 2	Managing InTouch Modern Applications	5
	Creating an InTouch Modern Application	6
	Editing an InTouch Modern Application	8
	Exporting a Modern Application	9
	Importing an InTouch Modern Application	11
	Migrating to an InTouch Modern Application	14
	Publishing an InTouch Modern Application	15
	Deleting an InTouch Modern Application	16
Chapter 3	Configuring InTouch Modern Applications	17
	Configuring Languages for a Modern Application	18
	Configuring the Application Style Library for Modern Applications	20
	Configuring Alarm Priority Mapping for Modern Applications	22
	Exporting ArcestrA Graphics from a Modern Application	23
	Importing ArcestrA Graphics to an Modern Application	25
	Importing and Embedding Custom Client Controls	27
	Exporting ArcestrA Symbol Text Strings from a Modern Application	29
	Importing Text Strings of ArcestrA Symbols to a Modern Application	30
	Configuring NAD Support for Modern Applications	32



Chapter 1

Introducing InTouch Modern Applications

Modern InTouch applications give you the capability to easily integrate ArchestrA symbols directly into your applications. You simply drag ArchestrA or Situational Awareness Library symbols from WindowMaker's ArchestrA Graphic Toolbox into Modern application windows. All configuration steps to use ArchestrA Graphics are completed from InTouch WindowMaker.

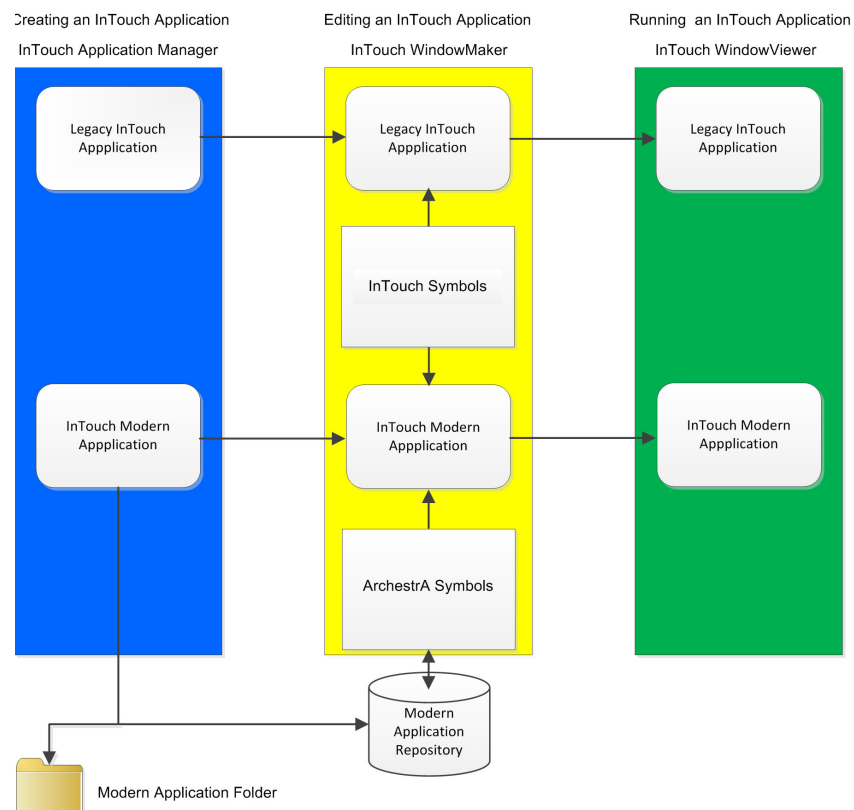


Modern applications combine the capability inherent in ArchestrA symbols with the familiar workflow of legacy InTouch applications.

Working With InTouch Modern Applications

The following figure summarizes the workflow of managing and configuring Modern applications. Most management tasks are completed from InTouch Application Manager to:

- Create Modern applications
- Open and edit Modern applications
- Export and import Modern applications
- Migrate earlier versions of InTouch applications to Modern applications
- Publish Modern applications
- Delete Modern applications



Most Modern application configuration tasks are done from WindowMaker to:

- Configure support for other languages
- Configure the Application Style Library
- Configure Alarm Priority Mapping
- Export and import ArcestrA symbols
- Import client controls
- Configure NAD support
- Export and import localizaiton strings for symbols

Chapter 2

Managing InTouch Modern Applications

This chapter includes the following topics that explain how to create and manage your InTouch Modern applications from the InTouch Application Manager.

[Creating an InTouch Modern Application](#)

[Editing an InTouch Modern Application](#)

[Exporting a Modern Application](#)

[Importing an InTouch Modern Application](#)

[Migrating to an InTouch Modern Application](#)

[Publishing an InTouch Modern Application](#)

[Deleting an InTouch Modern Application](#)

Creating an InTouch Modern Application

You create a Modern InTouch application from InTouch Application Manager. When you create a Modern InTouch application, you must:

- Provide a base folder path to save your Modern applications.
- Specify the name of a folder that stores the Modern application's files.
- Specify the name of the application.

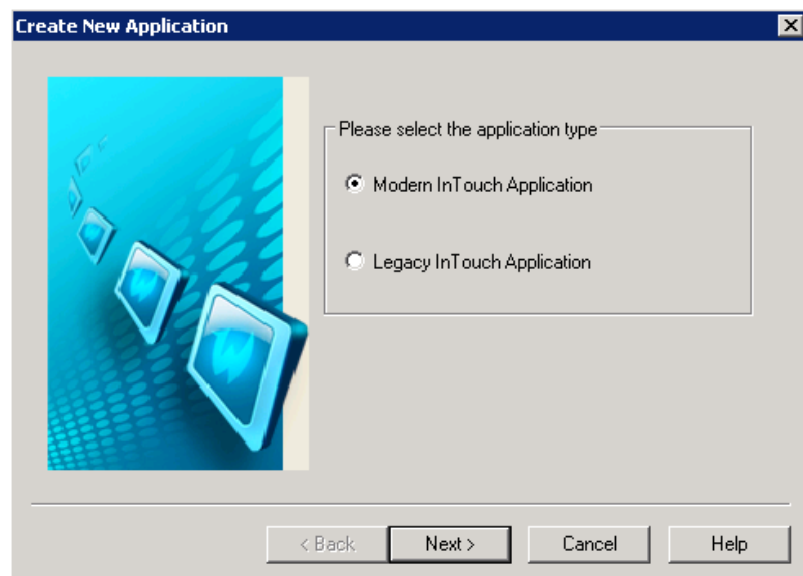
After creating a Modern application you can access the Modern application's folder to define it as NAD master folder, share the folder on the network, and copy additional files to the folder.

Important: You cannot use Windows Explorer to move a Modern application's folder after it has been created. Use the Modern application export and import options to move your Modern application to another folder or computer.

To create an InTouch Modern application

- 1 Open InTouch Application Manager.
- 2 Select **New** by one of the following methods:
 - a Select **New** from the **File** menu.
 - b Right-click within Application Manager and select **New** from the shortcut menu.
 - c Select the **New** icon from the menu bar.
 - d Press the Ctrl + N keys.

The **Create New Application** wizard appears with options to create a Modern or legacy application.



- 3 Select **Modern InTouch Application** and click **Next**.

The **Create New Application** wizard updates to show a field to enter a base directory path to save InTouch applications.

- 4 Click **Browse** and select a directory path.

- 5 Click **Next**.

The **Create New Application** wizard updates to show a field to enter the name of the folder for the new Modern application being created.

- 6 Type the name of the folder and click **Next**.

The **Create New Application** wizard updates to show fields to enter a name and a description of a new Modern application.

- 7 Type the name of the Modern application in the **Name** field.

Important: Application names must be 32 characters or less.

- 8 If you want, enter an optional description of the application in the **Description** field.

The description appears in the **Description** column of Application Manager's list of applications.

- 9 Click **Finish**.

A horizontal bar shows the progress of creating a new Modern application. After the application is created, it appears in Application Manager's list of applications.

Editing an InTouch Modern Application

Opening a Modern application is similar to a legacy InTouch application. You open a Modern application from the InTouch Application Manager to edit in WindowMaker or run in WindowViewer.

To open and edit a Modern application

- 1** Open InTouch Application Manager showing InTouch applications listed by name.
- 2** Double-click on the name of a listed Modern application to open it in WindowMaker.

You can also open Modern application by other methods:

- a** Click on the Modern application's name to select it.
- b** Do one of the following:
 - Select **WindowMaker** from the **File** menu.
 - Right-click within Application Manager and select **WindowMaker** from the shortcut menu.
 - Select the **WindowMaker** icon from the menu bar.
 - Press the Ctrl + M keys.
- 3** Save your editing changes to a Modern application.

When you edit an InTouch Modern application, your changes are saved to the application folder.
- 4** Close the application.

Exporting a Modern Application

To copy or share a Modern application, you can export an application to an aaPKG file. Then, you can import the application with another name or to another folder or computer.

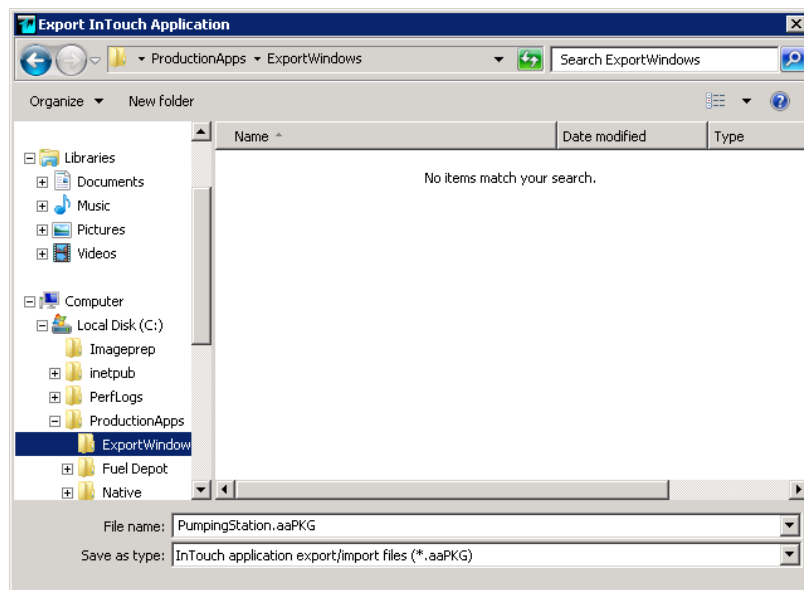
An exported aaPKG file contains the Modern application's:

- ArcestrA Graphic Toolbox
- Application Style Library
- Alarm Priority Mapping
- Language strings
- Application folder contents

To export a Modern application

- 1 Open InTouch Application Manager.
- 2 Click on a Modern application name to select it from Application Manager's list of InTouch applications.
- 3 Select the **Export** wizard by one of the following methods:
 - a Select **Export** from the **File** menu.
 - b Right-click within Application Manager and select **Export** from the shortcut menu.
 - c Select the **Export** icon from the menu bar.
 - d Press the Ctrl + E keys.

The **Export InTouch Application** wizard appears with a field to name the export file. The default name of the export aaPKG file is the application name.



- 4 If desired, change the export file name and the destination folder to save the export file.
- 5 Click **Save**.

A horizontal bar shows the progress of exporting the application. After the export operation is complete, Window Explorer opens to show the exported aaPKG file in the designated folder.

Importing an InTouch Modern Application

You can create a new Modern InTouch application by importing an existing Modern InTouch application package file or a legacy InTouch application. However, published Modern applications cannot be imported to create a new application.

Importing an exported Modern InTouch application also imports the application's existing style library, Alarm Priority mapping, and language strings.

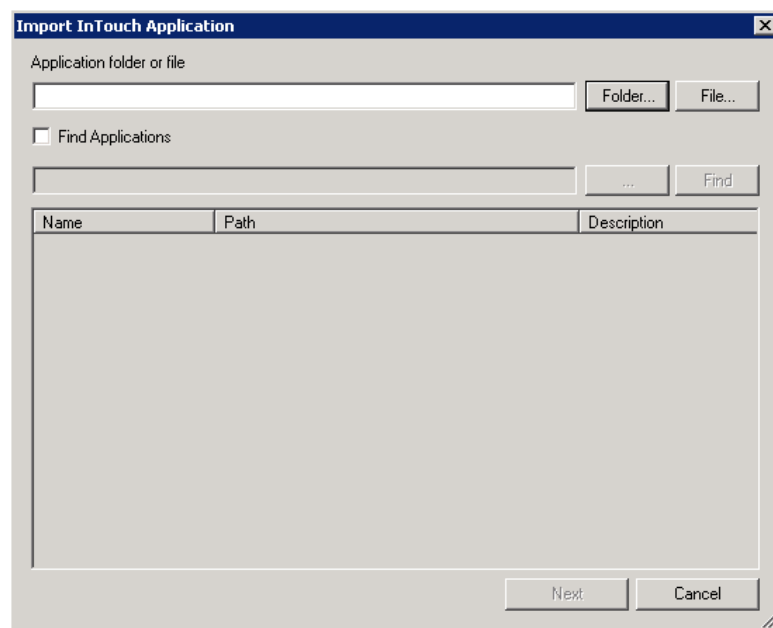
Importing a Modern application:

- Creates a new InTouch application folder under a base application folder path you select.
- If the import source is an aaPKG file, ArchestrA graphics are imported and replace the existing ArchestrA graphics.

To import a Modern application

- 1 Open InTouch Application Manager.
- 2 Select the **Import** wizard by one of the following methods:
 - a Select **Import** from the **File** menu.
 - b Select the **Import** icon from the menu bar.
 - c Press the Ctrl + I keys.

The **Import InTouch Application** wizard appears with buttons and fields to select the root folder of a legacy InTouch application or an exported Modern application package file (aaPKG). You can also select applications by searching a folder for all available InTouch applications.



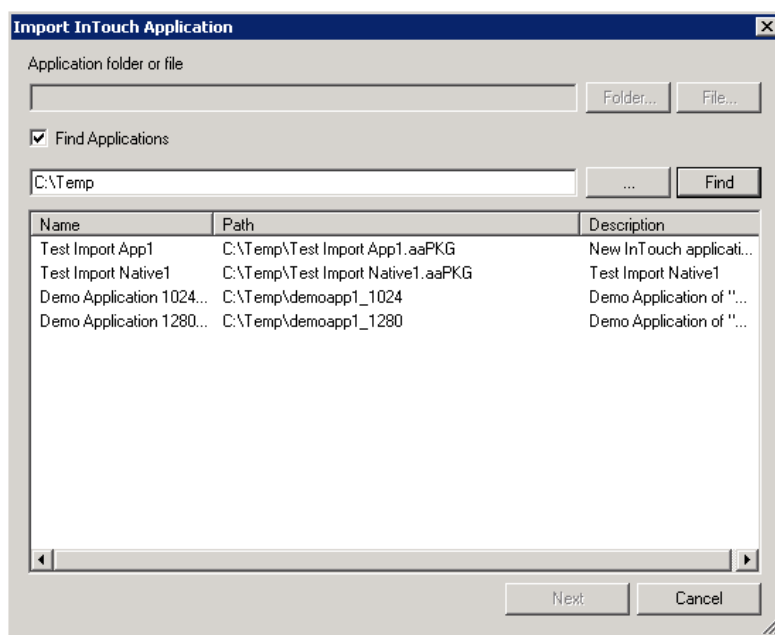
The **Import InTouch Application** wizard provides three options to select a file or folder to import a Modern application:

- Search for a file or folder
 - Select a file
 - Select a folder
- 3** Search for or select a file or folder for the InTouch application you want to import.

Search for a folder or a file to import

- a** Select **Find Applications**.
- b** Click the ellipsis button (...) and go to a folder to search for an application folder or file.
- c** Click **Find**.

A message appears indicating a search is being conducted. After the search finishes, the **Import InTouch Application** dialog box lists folders and files that can be imported.



- d** Select a folder or file from the list to import.
- e** Click **Next**.

The **Create New Application** wizard shows a field to specify the base folder path to import the folder or file you selected.

- f** Continue at step 4.

Select a file to import

- a** Click **File**.
- b** Go to the folder where the file to be imported is located.

- c** Click the file to be imported. The selected file appears in the **File name** field.
- d** Click **Open**. The selected file appears in the top field of the **Import InTouch Application** wizard.
- e** Click **Next**.

The **Create New Application** wizard shows a field to specify the base folder path to import the file you selected.

- f** Continue at step 4.

Select a folder to import

- a** Click **Folder**.
- b** Go to the folder where the folder to be imported is located.
- c** Click the folder to be imported and click **OK**. The selected folder appears in the top field of the **Import InTouch Application** wizard.
- d** Click **Next**.

The **Create New Application** wizard shows a field to specify the base folder path to import the folder you selected.

- e** Continue at step 4.

- 4** Click **Browse** and go to a folder to import the application.

- 5** Click **Next**.

The **Create New Application** dialog box appears with a field to enter a name of the folder to place the imported application.

- 6** Type the name of the folder to place the imported application.

- 7** Click **Next**.

The **Create New Application** wizard updates to show fields to enter a name and a description of the imported application. Both fields show the existing file or folder name and any existing description of the application.

- 8** In the **Name** field, accept the existing name or type a new name for the application.

- 9** If you want, enter an optional description of the application in the **Description** field.

- 10** Click **Finish**.

After the application is imported, it appears in Application Manager's list of applications.

If the aaPKG file you attempt to import includes non-supported components, the import fails and a dialog box with an error is shown.

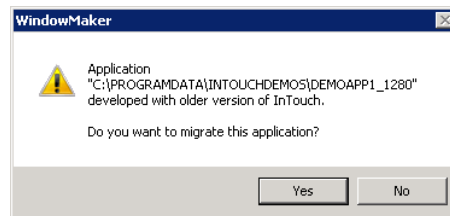
Migrating to an InTouch Modern Application

You can migrate a legacy or Modern application to the current version of InTouch. Migration enables you to convert your legacy InTouch applications into Modern applications that support ArchestrA graphics. Migrating an application keeps the migrated files in the original application folder.

To migrate an application

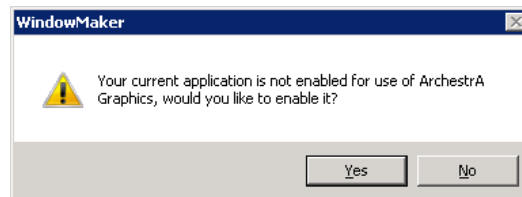
- 1 Open Application Manager.
- 2 From the application list, double-click on an application.

A pop-up message asks if you want to migrate your older InTouch application.



- 3 Click **Yes**.

A pop-up message asks if you want to migrate the application to be able to use ArchestrA graphics.



- If you click **Yes**, your application is converted to a Modern InTouch application.
 - If you click **No**, the application is migrated as a legacy InTouch application.
- 4 Click **Yes** or **No** to migrate the application.

If you are migrating a legacy InTouch application to a Modern application, you see a pop-up message asking if you want to create a back up before migrating the application.

No pop-up messages appear if you are migrating an older version of a Modern application. Migration begins immediately.

- 5 For a legacy InTouch application, click **Yes** or **No** to back up the application.

If migration finishes without problems, the migrated application is opened.

Publishing an InTouch Modern Application

You can publish a Modern InTouch application from Application Manager. A published Modern application can be distributed like a legacy InTouch application, but continues to support the functionality provided by ArcestrA symbols.

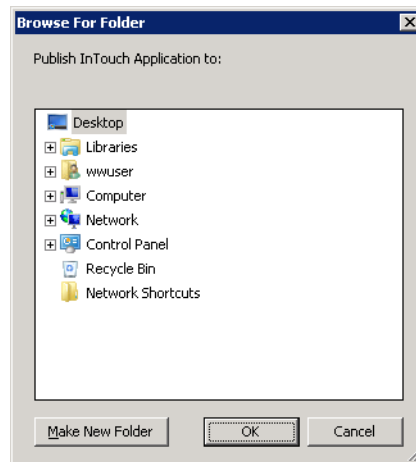
You can edit an ArcestrA symbol in published applications using basic InTouch operations like copying, cutting, pasting, or resizing. However, ArcestrA symbols cannot be modified, nor can new ArcestrA symbols be added to a published application.

Also, after publishing a Modern application you cannot edit application styles, alarm mapping, or symbol language strings.

To publish an InTouch Modern application

- 1 Open Application Manager.
- 2 Select the Modern application that you want to publish.
- 3 Select the **Publish** wizard by one of the following methods:
 - a Select **Publish** from the **File** menu.
 - b Right-click within Application Manager and select **Publish** from the shortcut menu.
 - c Press the Ctrl + P keys.

The **Browse for Folder** dialog box appears to select a folder to publish the Modern application.



- 4 Select a folder to publish the Modern application.
If you want to create a folder for the published Modern application, click **Make New Folder** and assign a name to the folder.
- 5 Click **OK**.

The Modern application is selected in InTouch Application Manager after it is published.

Deleting an InTouch Modern Application

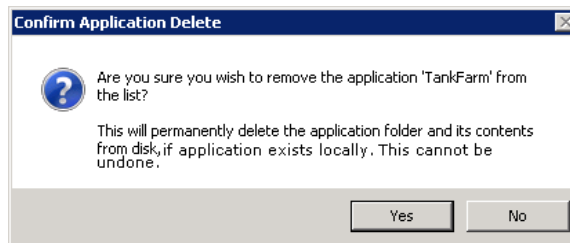
Deleting an InTouch Modern application permanently deletes the application's folder and associated repository on the local computer. Also, the Modern application no longer appears in the list of applications shown from Application Manager.

Note: If a Modern application's folder is placed on another computer's shared directory, the delete operation only removes the application from Application Manager. The delete operation does not delete a Modern application folder residing on another computer.

To delete a Modern application

- 1 Open Application Manager.
- 2 Select the Modern application that you want to delete from the list.
- 3 Select the **Delete** wizard by one of the following methods:
 - a Select **Delete** from the **File** menu.
 - b Right-click within Application Manager and select **Delete** from the shortcut menu.
 - c Click the **Delete** icon from the menu bar.
 - d Press the Del key.

A pop-up message appears and requests confirmation that you want to delete the Modern application you selected.



- 4 Click **Yes** to delete the Modern application.

The application you deleted no longer appears in the Application Manager list of InTouch applications.

Chapter 3

Configuring InTouch Modern Applications

This chapter includes the following topics that explain how to configure your InTouch Modern applications from WindowMaker.

[Configuring Languages for a Modern Application](#)

[Configuring the Application Style Library for Modern Applications](#)

[Configuring Alarm Priority Mapping for Modern Applications](#)

[Exporting ArchestrA Graphics from a Modern Application](#)

[Importing ArchestrA Graphics to an Modern Application](#)

[Importing and Embedding Custom Client Controls](#)

[Exporting ArchestrA Symbol Text Strings from a Modern Application](#)

[Importing Text Strings of ArchestrA Symbols to a Modern Application](#)

[Configuring NAD Support for Modern Applications](#)

Configuring Languages for a Modern Application

You can configure additional languages for a Modern application that can be used in run-time language switching. You can also change the text font while configuring an application's languages.

To configure languages for a Modern application

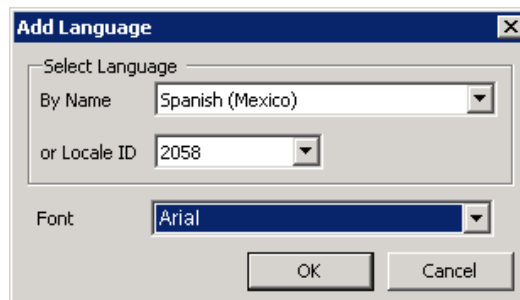
- 1 Open the Modern application in WindowMaker.
- 2 On the **Special** menu, click **Language**, and then click **Configure Languages**.

The **Configure Languages** dialog box appears with buttons to add, remove, and set a default language for an application.

To add a language:

- a Click **Add**.

The **Add Language** dialog box appears to select another language by name or locale ID.



- b Click the **By Name** or **Locale ID** drop-down button and select a listed language to add to the application.
- c If you want to change the font for the language you are adding to the application, click the **Font** drop-down button and select the font for the language.
- d Click **OK** to add the language to the application.

To remove a language:

- a Select the language you want to remove from the **Configure Languages** dialog box.
- b Click **Remove**.

The **Confirm Delete** dialog box appears to verify that you want to remove the language from the application.

- c Click **Yes**.

The **Configure Languages** dialog box refreshes and shows the language has been deleted.

To set a default language:

- a** Select the language you want to set as the default for the application on the **Configure Languages** dialog box.
- b** Click **Set Default**.

The **Configure Languages** dialog box refreshes and shows the default language of the application in the bottom left corner.

Configuring the Application Style Library for Modern Applications

You can configure style libraries for a Modern InTouch application. Your configuration changes are saved to the Modern application's repository. You can configure application styles for Quality and Status, Element Styles, and numeric Format Styles.

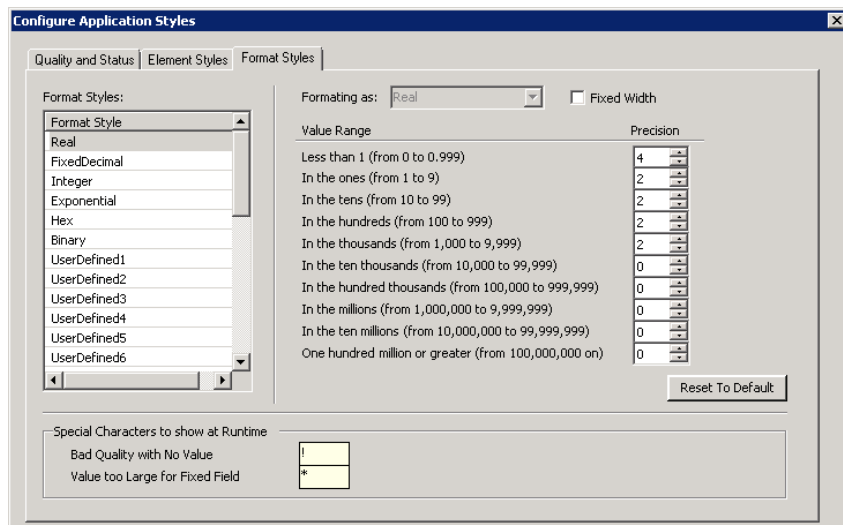
- Quality and Status indicators are graphic icons that represent the current quality of application data and the state of equipment shown by application symbols.
- Element Styles define a set of visual properties that determine the appearance of text, lines, graphic outlines, and interior fill shown in ArchestrA Symbols or graphics.
- Format Styles provide options to individually configure application-wide styles for common types of numbers used in Modern applications.

Important: This section describes the workflow within WindowMaker to access a Modern application's style libraries. For more information about editing application styles, see WindowMaker online help or the *Creating and Managing ArchestrA Graphics User's Guide*.

To configure the Application Style Library for Modern Applications

- 1 Open a Modern application in WindowMaker.
- 2 On the **Special** menu, click **Configure**, and then click **Application Style Library**.

The **Configure Application Styles** dialog box appears with tabs to configure quality and status indicators, graphic Element styles, and number format styles.



- 3** Select a tab for the application style you want to edit.
- 4** Refer to WindowMaker online help or the *Creating and Managing ArchestrA Graphics User's Guide* for more information about editing application styles.

Configuring Alarm Priority Mapping for Modern Applications

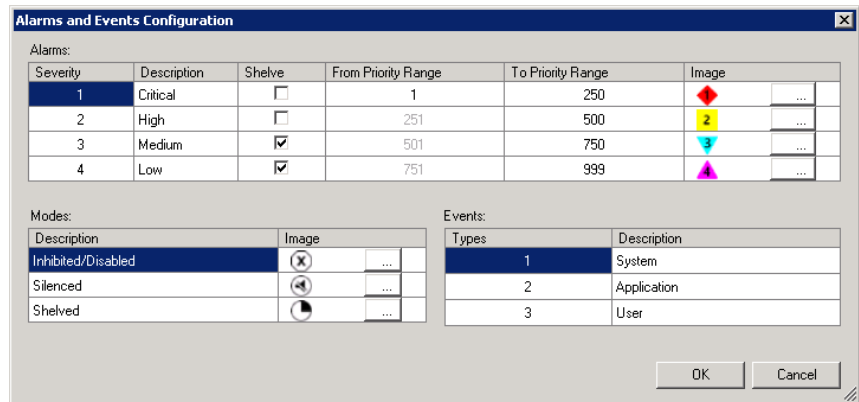
You can configure the alarm priority mapping of a Modern InTouch application to set a priority range for each alarm severity level.

Important: This section describes the workflow within WindowMaker to map alarm priority ranges to alarm severities. For more information about configuring alarm priority mapping and alarm shelving, see WindowMaker online help or the *Creating and Managing Archedra Graphics User's Guide*.

To configure Alarm Priority Mappings for Modern Applications

- 1 Open a Modern application in WindowMaker.
- 2 On the **Special** menu, click **Configure**, and then click **Alarm Priority Mapping**.

The **Alarms and Events Configuration** dialog box appears with fields to map a priority range to each alarm severity. The **Alarms and Events Configuration** dialog box also contains fields to enable alarm shelving based on alarm severity.



- 3 In the **From Priority** and **To Priority Range** fields, click and enter numbers from 1 to 999 to set the lower and upper boundaries of an alarm priority range for each alarm severity.

Each priority range should be contiguous without overlap between priority ranges. Alarm severity 1 starts at priority 1 by default.

- 4 In the **Shelve** column, select or clear the check box to enable alarm shelving for each alarm severity.
- 5 Click **OK** to save your changes.

Your changes are saved to the Modern application's Galaxy Repository and application folder.

Exporting ArcestrA Graphics from a Modern Application

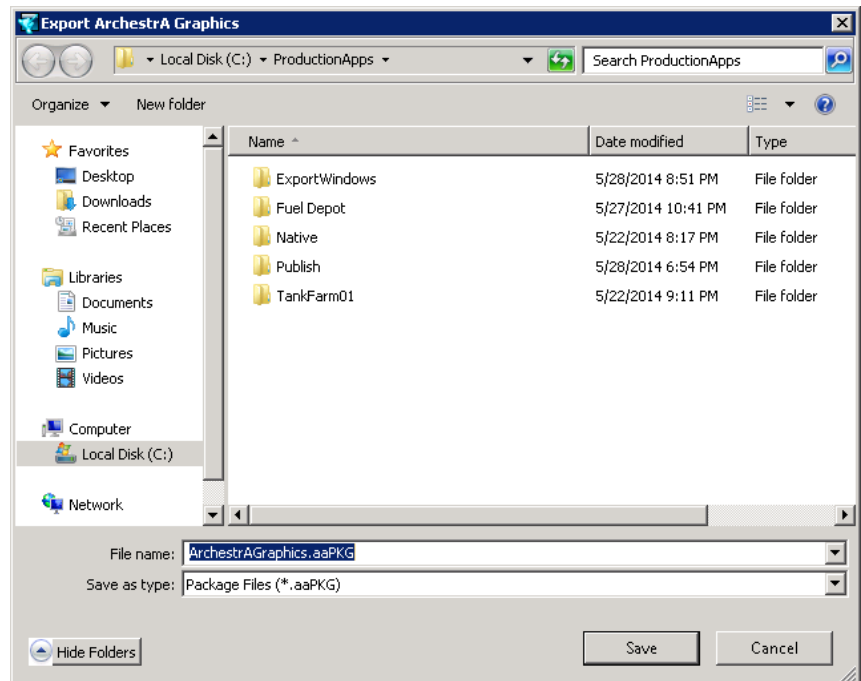
You can export all ArcestrA graphics from a Modern application to an aaPKG file. You can then import the graphics from the file to another Modern application on the same or different computer.

You cannot select which ArcestrA graphics to export from a Modern application. All ArcestrA graphics are exported from a Modern application.

To export ArcestrA graphics from a Modern application

- 1 Open the Modern application in WindowMaker containing the ArcestrA graphics that you want to export.
- 2 On the **File** menu, click **Export**, and then click **All ArcestrA Graphics**.

The **Export ArcestrA Graphics** dialog box appears to specify the destination folder and the name of the export file.



- 3 Select the destination folder to export the aaPKG file.
- 4 If you want, enter the name of the export file in the **File name** field.

The default export file name is ArcestrAGraphics.aaPKG.

- 5 Click **Save**.

A horizontal bar shows the progress of the ArcestrA graphics being loaded into the export file.

- 6** Click **Close** after the export process is finished.
- 7** Using Windows Explorer, go to the destination folder and verify the export file has been created.

Importing ArcestrA Graphics to an Modern Application

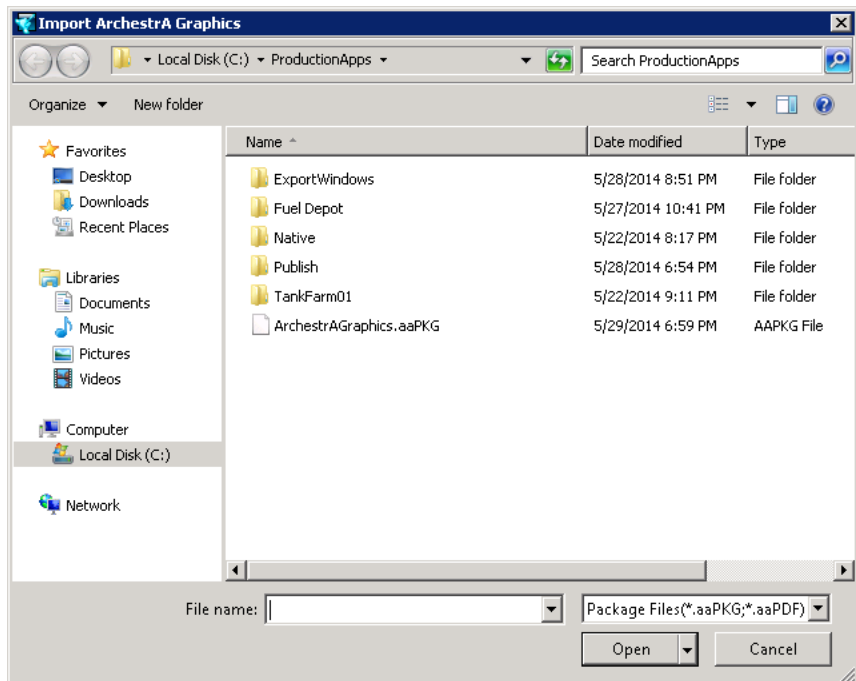
You can import ArcestrA graphics created in another Modern application to the active Modern application running in WindowMaker.

Only ArcestrA graphics from the aaPKG file are imported. The imported graphics overwrite any graphics of the Modern application open for editing in WindowMaker. If the aaPKG file contains non-supported components, the import fails and a dialog box with an error is shown.

To import ArcestrA graphics to a Modern application

- 1 Open the Modern application in WindowMaker that you want to import ArcestrA graphics.
- 2 On the **File** menu, click **Import**, and then click **ArcestrA Graphics**.

The **Import ArcestrA Graphics** dialog box appears to specify the folder containing an export file of ArcestrA graphics.



- 3 Using Windows Explorer, go to the folder containing an aaPKG file of exported ArcestrA graphics.
- 4 Select the aaPKG file to import.

The **File name** field shows the name of the file you selected.

- 5 Click **Open**.

A horizontal bar shows the progress of the ArchestrA graphics being imported into the active Modern application.

- 6 Click **Close** after the import process is finished.

Importing and Embedding Custom Client Controls

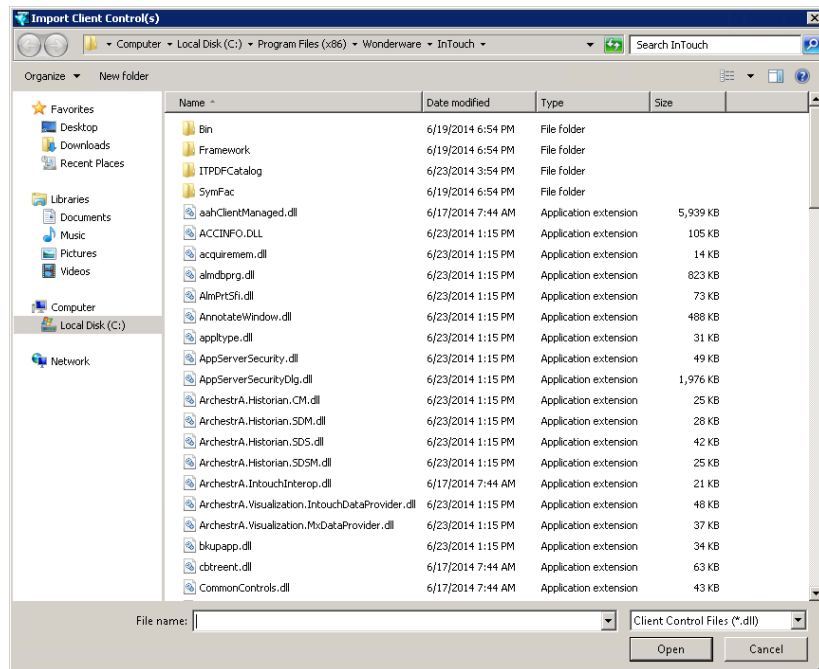
You can create a custom Windows client control and embed it in an ArcestrA symbol in your Modern application. First, you must import the client control to WindowMaker's ArcestrA Graphic Toolbox. This section describes the steps to import and then embed a custom client control in separate procedures.

To import a custom client control

- 1 Create a custom client control for your Modern application.
- 2 Place the client control in a folder accessible to the computer where InTouch WindowMaker is installed.
- 3 On the **File** menu, click **Import**, and then click **Client Control**.

Important: Only Modern applications can import custom client controls. You cannot import custom client controls to managed, legacy, or published InTouch applications.

The **Import Client Control(s)** dialog box appears with a field to enter the name of a custom client control you created.



- 4 Using Windows Explorer, go to the folder where you placed the client control .dll file.
- 5 Select the client control .dll file and click **Open**.

WindowMaker updates and shows the custom client control you imported in the ArcestrA Graphic Toolbox.

You can also remove an imported client control from the ArcestrA Graphic Toolbox. First, select the client control within the ArcestrA Graphic Toolbox. Then, right-click to show the shortcut menu and select **Delete**.

To embed a custom client control in an ArcestrA symbol

- 1** Open the Modern application in WindowMaker that you intend to embed a custom client control.
- 2** Open the window containing the ArcestrA symbol that you intend to embed a custom client control.
- 3** Select the ArcestrA symbol.
- 4** From the menu bar, click the **Embed ArcestrA Graphic** icon.

Important: You cannot drag and drop the custom client control from the ArcestrA Graphic Toolbox onto the ArcestrA symbol. You must always embed the custom client control.

- 5** Configure your custom client control as needed for the Modern application.

Exporting ArchestrA Symbol Text Strings from a Modern Application

If your Modern application is intended to support run time language switching, you can export the text strings of its ArchestrA symbols to a dictionary file. You can then translate the strings within the dictionary file to other languages using a text editor, an XML editor, or a spreadsheet program like Microsoft Excel.

When you export the symbol text strings, you must specify an output folder for the dictionary file. A best practice is to create a separate folder for each dictionary file whose strings will be translated into another language.

All exported dictionary files follow a naming convention:

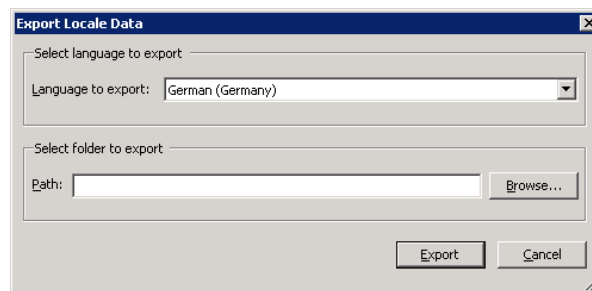
<ModernAppFolderName>AA_<LanguageID>.xml. For example, if a Modern application folder name is PumpStation and the language being exported is French (Language ID = 1036), then the file name is PumpStationAA_1036.xml.

If you will be exporting language strings for different objects at different times, use separate target folders to prevent subsequent exports from overwriting the first export.

To export ArchestrA symbol text strings

- 1 Open the Modern application in WindowMaker.
- 2 On the **Special** menu, click **Language**, and then select **Export ArchestrA Graphics Locale Data**.

The **Export Locale Data** dialog box appears with fields to select the exported language and a folder to place the exported dictionary file.



- 3 Configure the symbol text strings to export.
 - In the **Languages to export** list, select the language dictionary to export. The default language is not listed.
 - In the **Path** field, type the folder to which you want to export the dictionary file. Click **Browse** to select an existing folder or create a new folder.
- 4 Click **Export**. A bar shows the progress of the export operation.

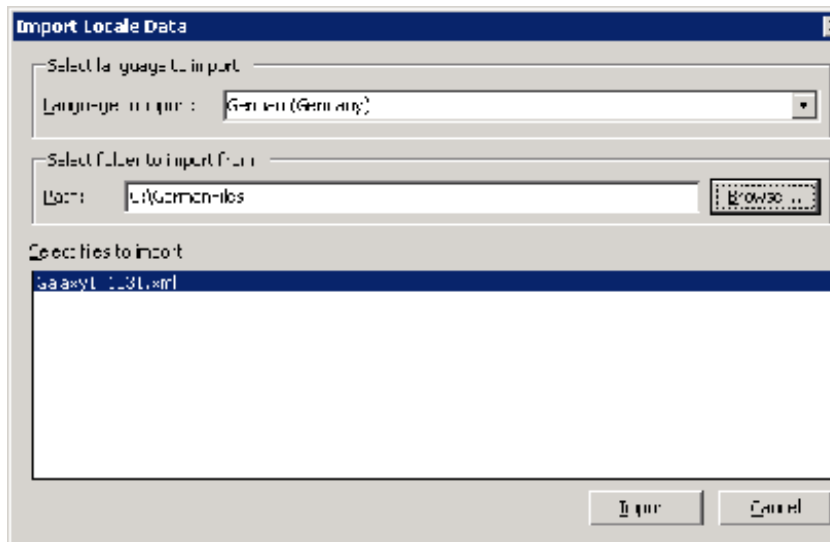
Importing Text Strings of ArchestrA Symbols to a Modern Application

For symbol text, you must import the translated dictionary files for each language to enable run-time language switching for those languages. All dictionary files for a given language should be placed in the same folder.

You can import files for only one language at a time. When you import, you select the desired language and specify the dictionary files to import.

To import a translated dictionary file

- 1 Open the Modern application in which you want to import symbol text.
- 2 On the **Special** menu, click **Language**, and then select **Import ArchestrA Graphics Locale Data**.



- 3 Configure the import settings.
 - In the **Language to import** list, select the language dictionary to import.
 - In the **Path** box, specify the folder that includes the dictionary file to import.
 - In the **Select files to Import** box, select the .xml files to import. Only files that include the current Modern application folder name and the locale ID for the selected language are shown.

- 4 Click **Import**. The import progress is shown.
- 5 Click **Close**. The **Import Language Dictionary Files** dialog box appears.
- 6 Click **Close**. A summary of the import is shown.
- 7 Click **OK**.

Configuring NAD Support for Modern Applications

Network Application Development (NAD) combines a client server architecture with automatic notification of application changes. Based on user preferences, NAD can automatically distribute updated applications from the master to the client nodes running the application in WindowViewer.

A Modern application supports NAD in the same way as a legacy InTouch application. A Modern InTouch application folder can be shared as the NAD master location. A NAD client is notified when there are changes to the Modern application on the master node.

In addition to the updates to the components of legacy InTouch applications, a Modern application notifies client nodes when there are updates to:

- ArcestrA Graphics
- Application Style Library
- Alarm priority mapping

Modern applications impose some restrictions on NAD:

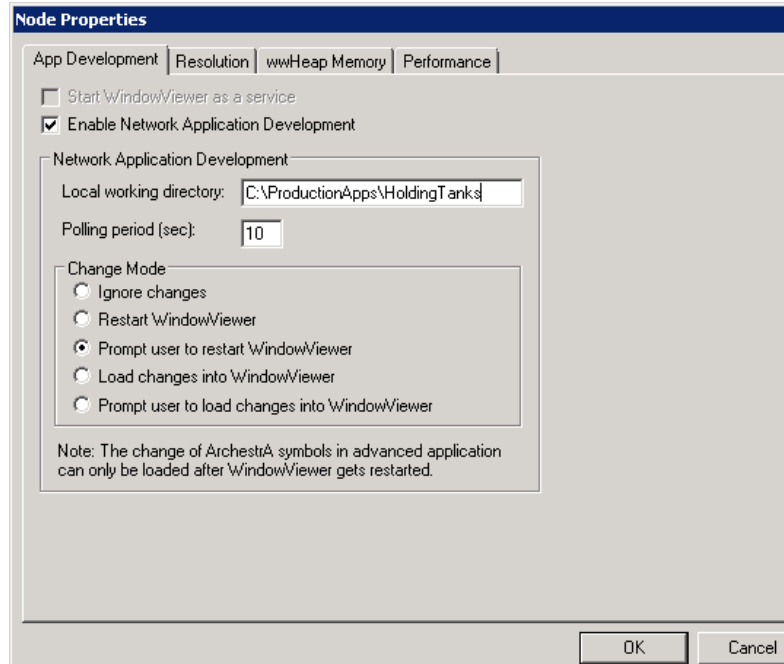
- Any changes to ArcestrA graphics can be loaded to NAD client nodes only after restarting WindowViewer. Also, the **Notify Client** command must be selected one time in order to generate ArcestrA symbols on disk to be available to the NAD client.
- Any changes to a Modern application's ArcestrA graphics, style library, and alarm priority mapping are distributed to client nodes only after selecting the **Notify Client** command from the master node.
- The **Notify Client** command is always enabled for Modern applications on the master node. As a result, the state of the **Notify Client** command does not indicate if there are any pending changes that need to be sent to client nodes.
- If the **Load changes into WindowViewer** or **Prompt user to load changes into WindowViewer** options are selected from the client node, the user is prompted to restart WindowViewer when any changes to a Modern application are detected.

To configure NAD master support for a Modern application

- 1 Start Application Manager from the NAD master node.
- 2 Edit the Modern application in WindowMaker.
- 3 From the **Special** menu, click **Notify Client** to generate ArcestrA symbols on disk to be available to the NAD client.

To configure NAD client support for a Modern application

- 1 Start Application Manager from the NAD client node.
- 2 Select the Modern application to configure for NAD support.
- 3 From the **Tools** menu, click **Node Properties**.



- 4 Select the **Enable Network Application Development** check box.
- 5 In the **Local working directory** box, type the path to the master folder that contains the application distributed to client nodes.
- 6 In **Polling period (sec)**, type the interval in seconds at which a client node checks the master node for application updates.
- 7 In the **Change Mode** area, select the option that determines the action WindowViewer takes when the master application changes.
 - Click **Ignore changes** to have the WindowViewer node ignore any changes made on the development node.
 - Click **Restart Window Viewer** to have the WindowViewer node copy over the updated master application (if configured to do so) and then restart itself.
 - Click **Prompt user to Restart** to show a message from WindowViewer that the application has changed. The operator can either restart WindowViewer with the application updates or continue using the current application.

- Click **Load Changes into** WindowViewer to dynamically load in WindowViewer the changes made in the development node. This may affect performance for large updates.
 - Click **Prompt user to load changes into** WindowViewer to show the operator a message that the application has changed. The message prompts the operator to load the changes.
- 8** Click **OK**.
 - 9** From a client node, find the shared application from the master node in Application Manager.

Users can run the shared application in WindowViewer.