

SOP For Resetting ABT Power Meter

By

Nobendhu Patil

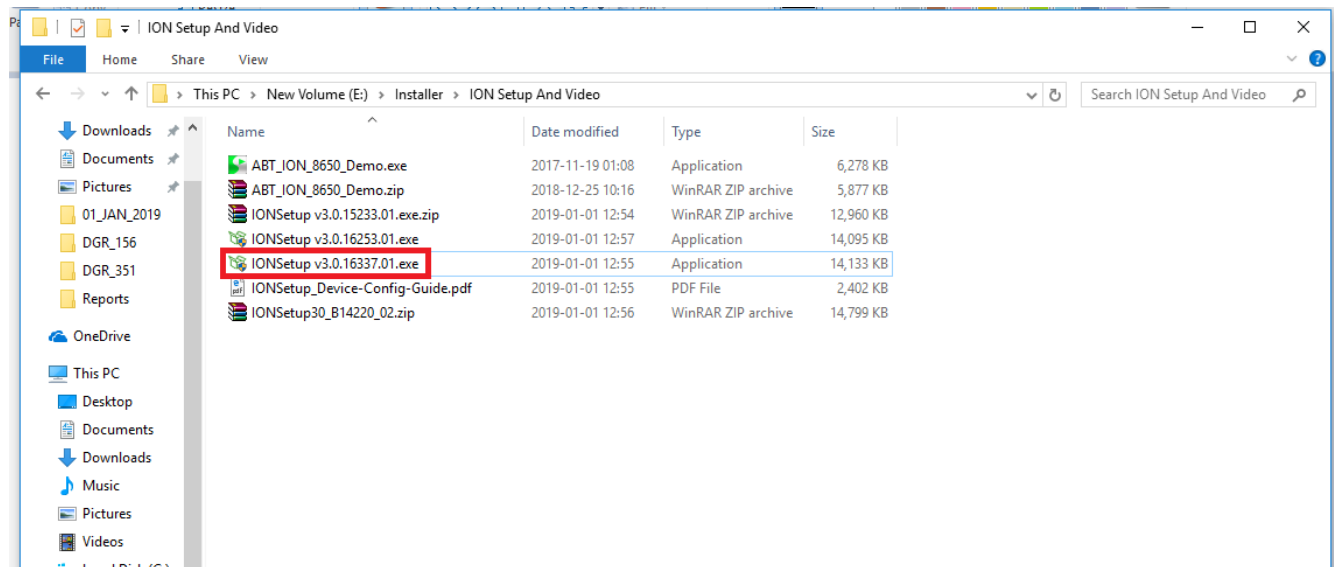
SOP For Resetting ABT Power Meter

Requirement:-

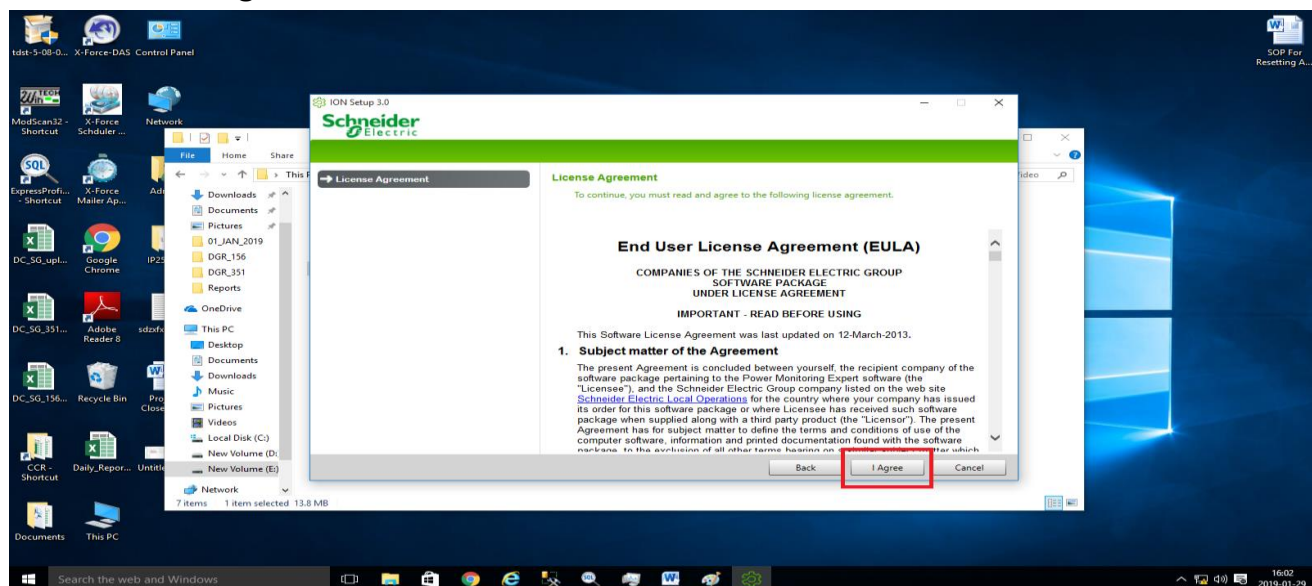
1. IONSetup v3.0.16337.01
2. IP2535U Setup files (For Virtual Port of Netex Converter)

Step 1:- Install ION Setup

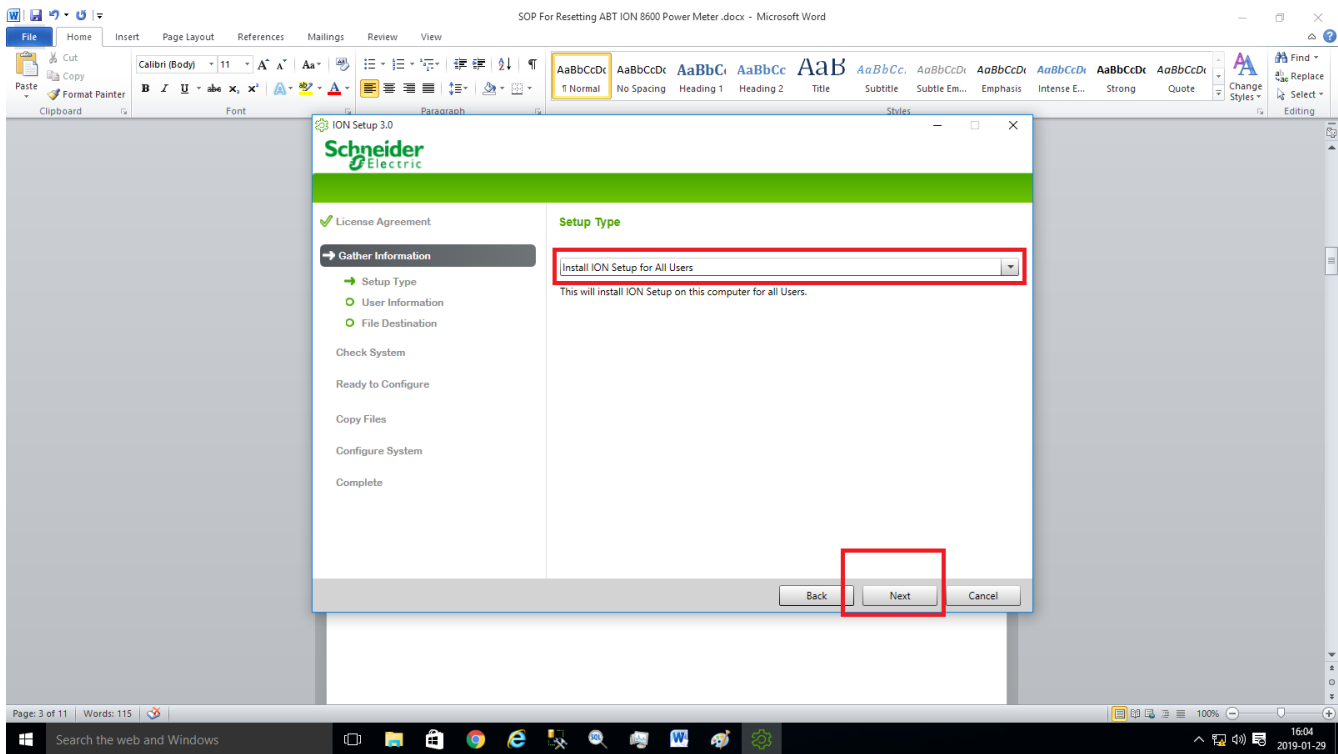
Double click on ION Setup



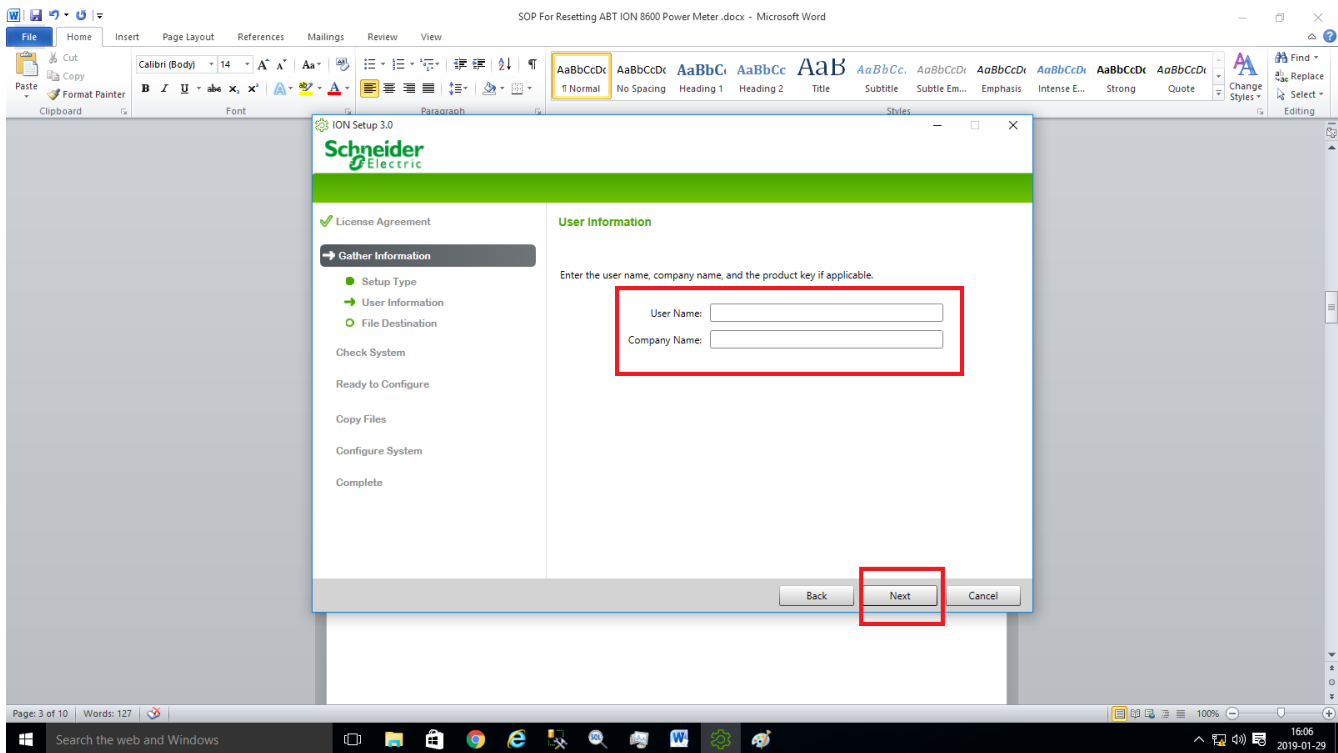
Then click on I Agree



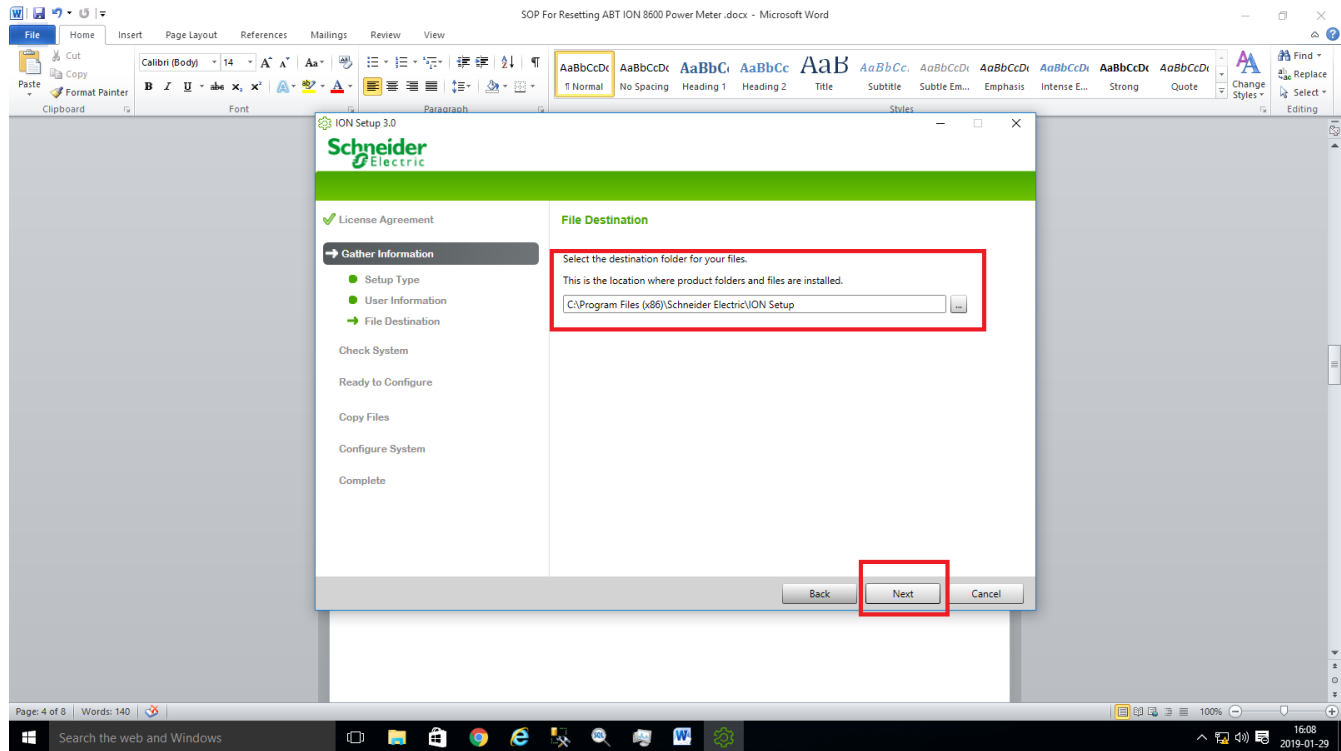
Then check for **setup type** as per screenshot and then click **Next**



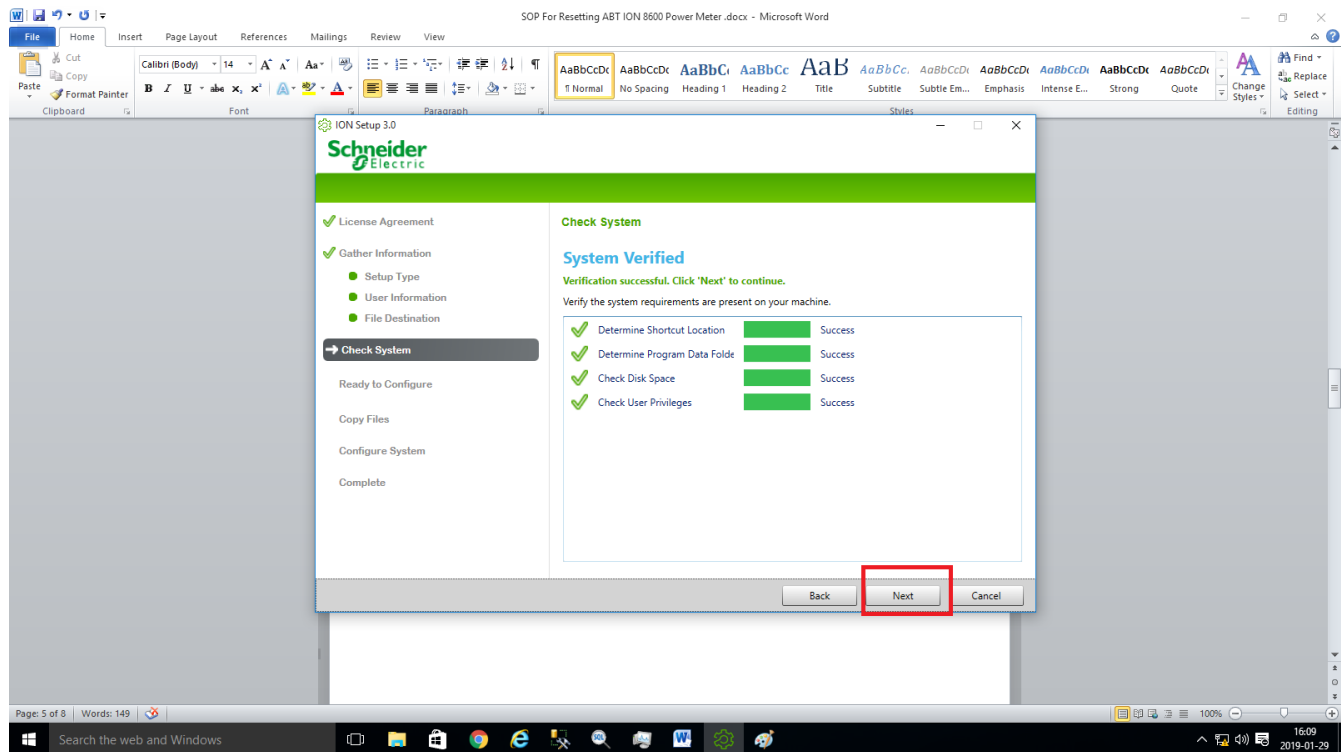
Give **User name** and **Company** and Click on **Next** as shown in Screenshot



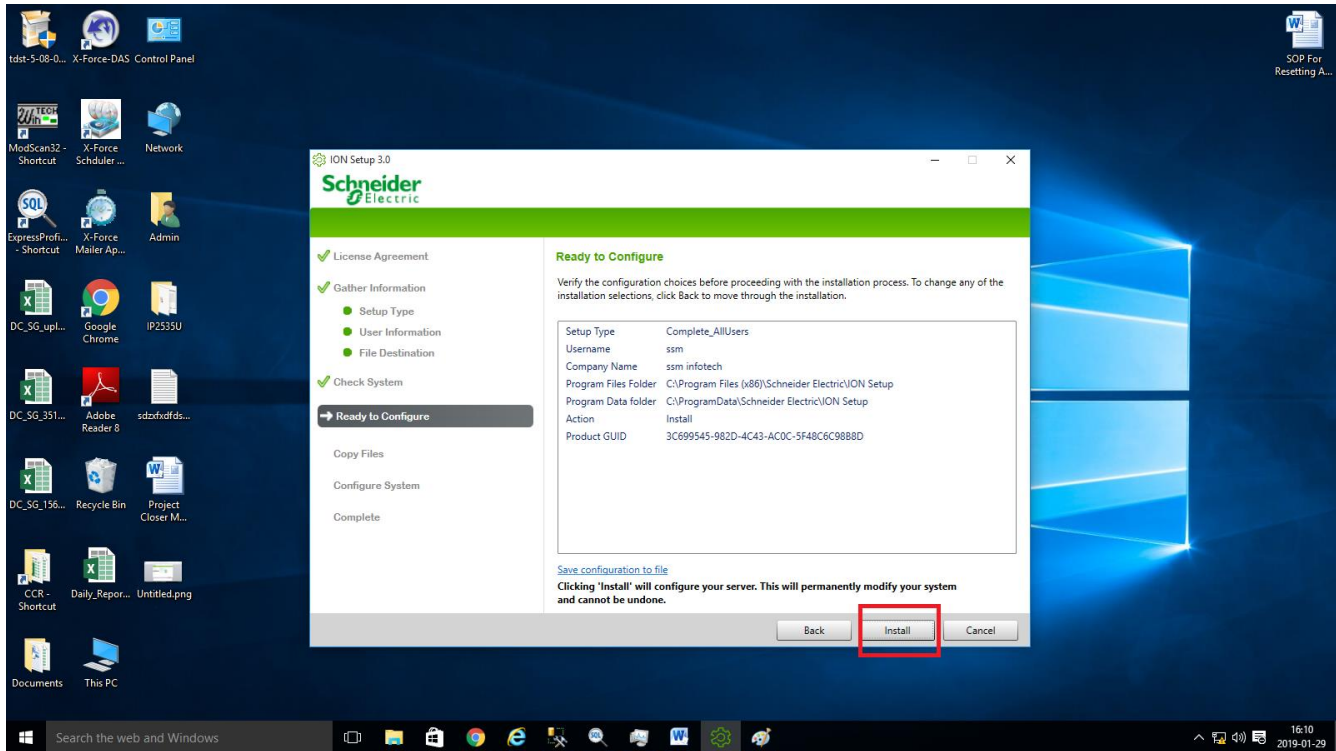
Give the **Destination Path** and then Click on **Next**



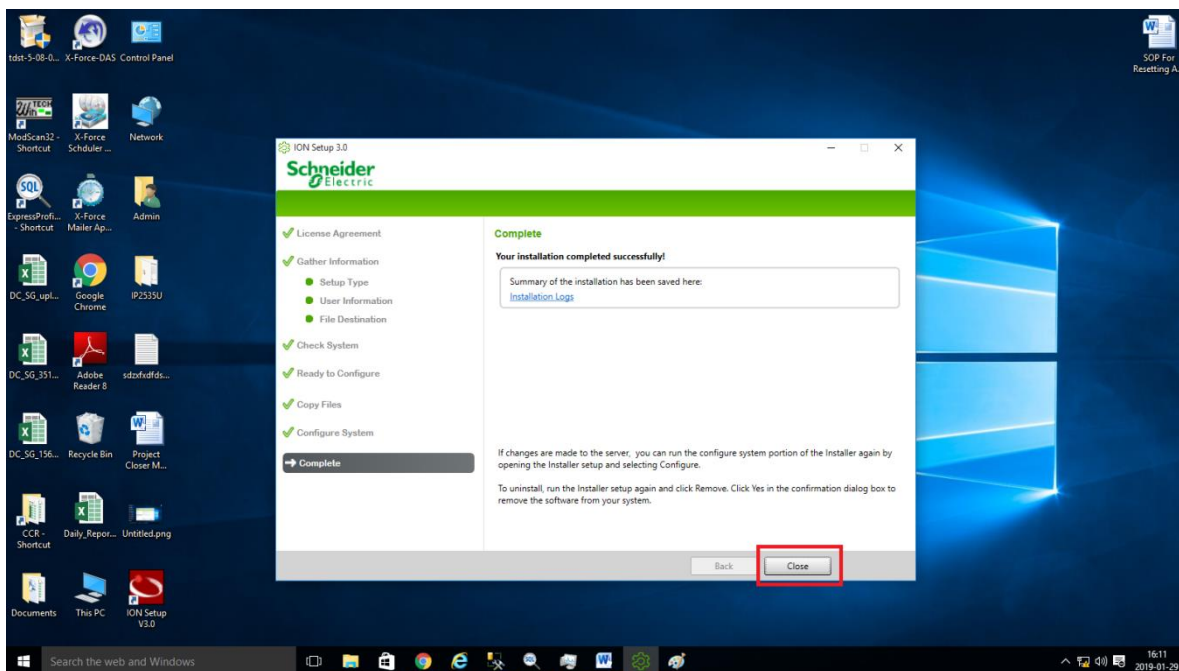
Then Click on **Next** two times



Then click on **Install**

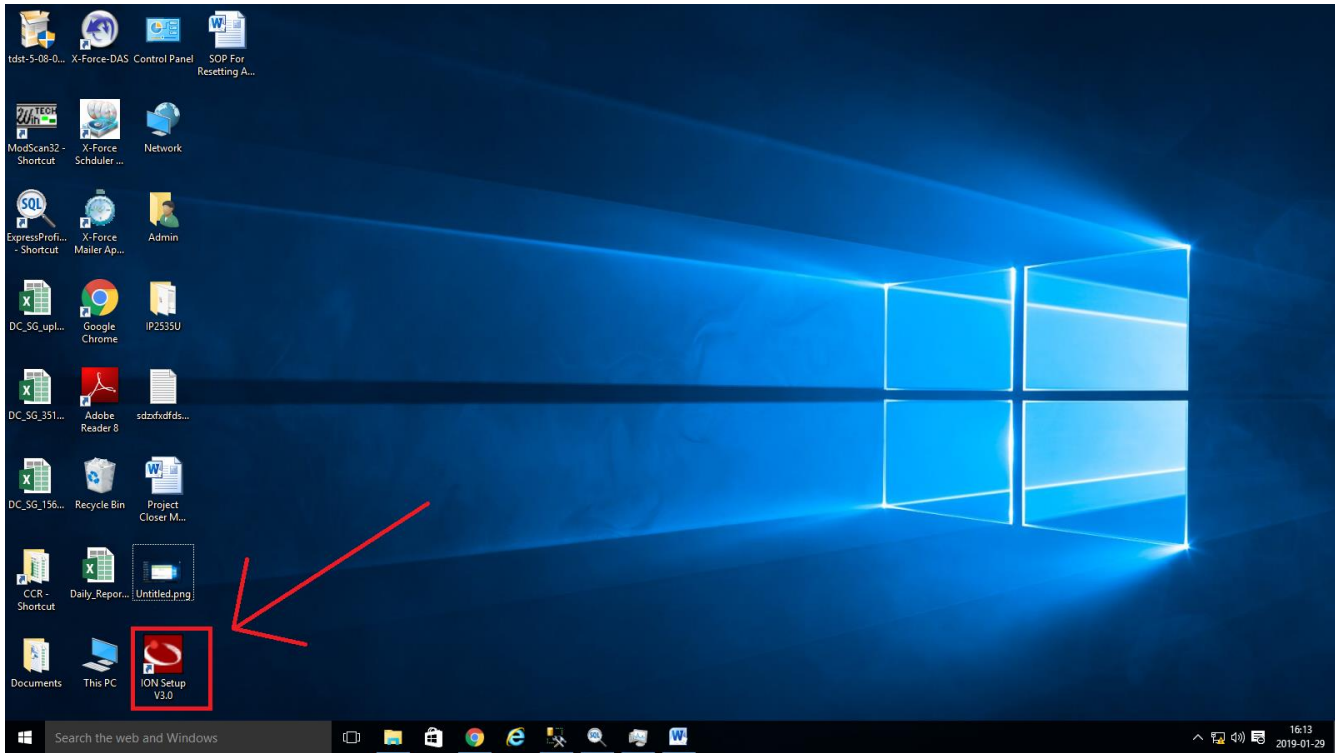


Click on **Next** and **Close**.



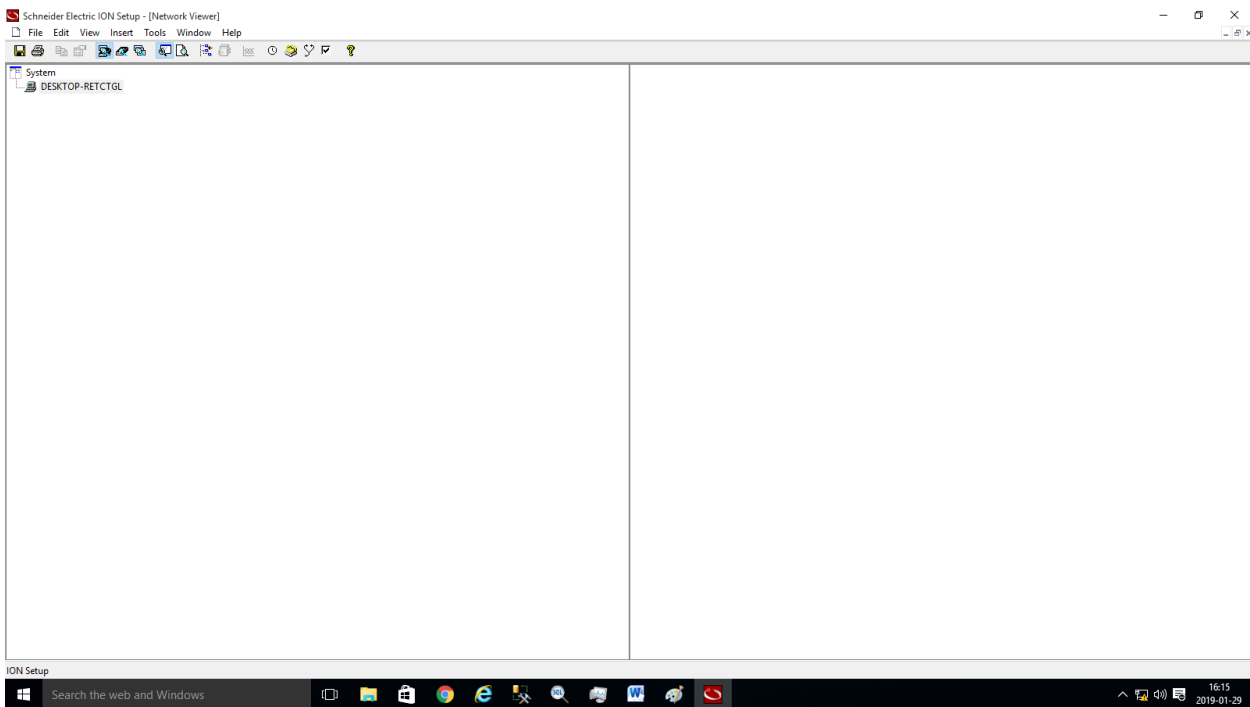
Installation of ION Setup is done.

Step 2: Open Installed ION Setup

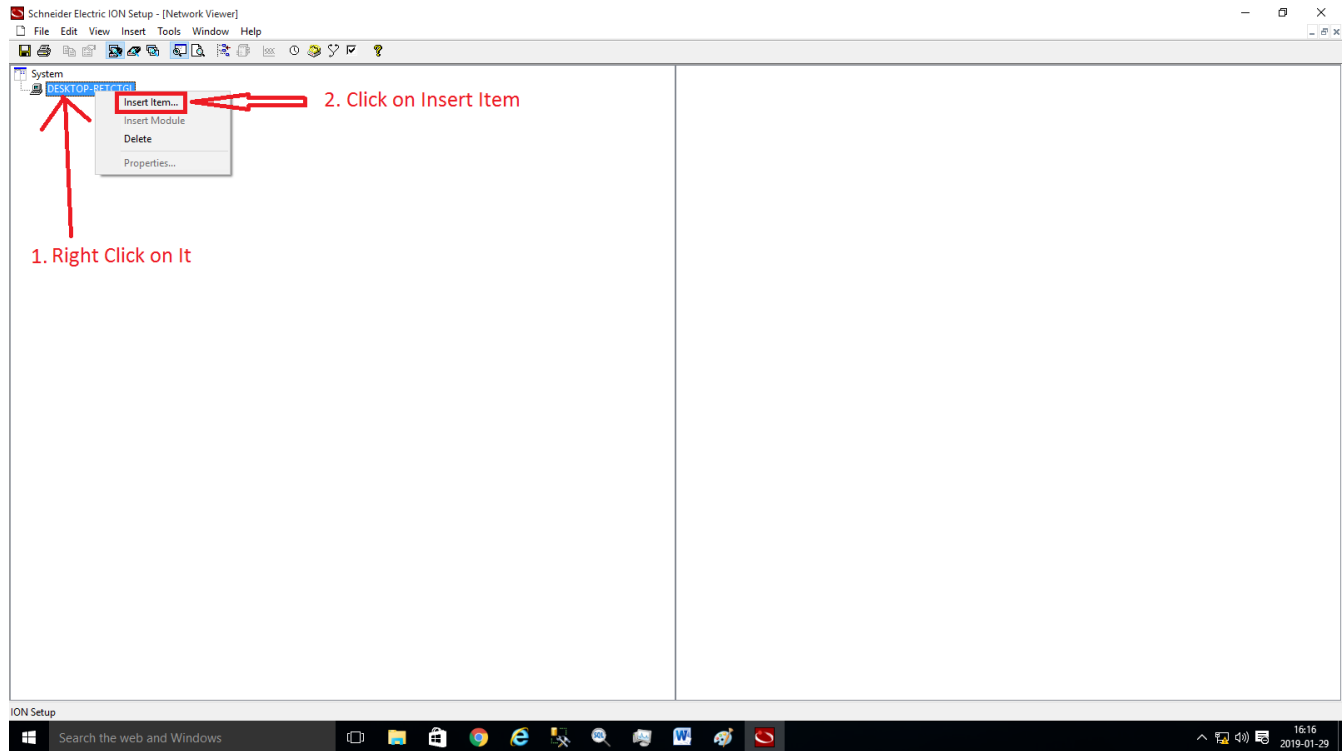


Then select **First Time User** and Press **OK**.

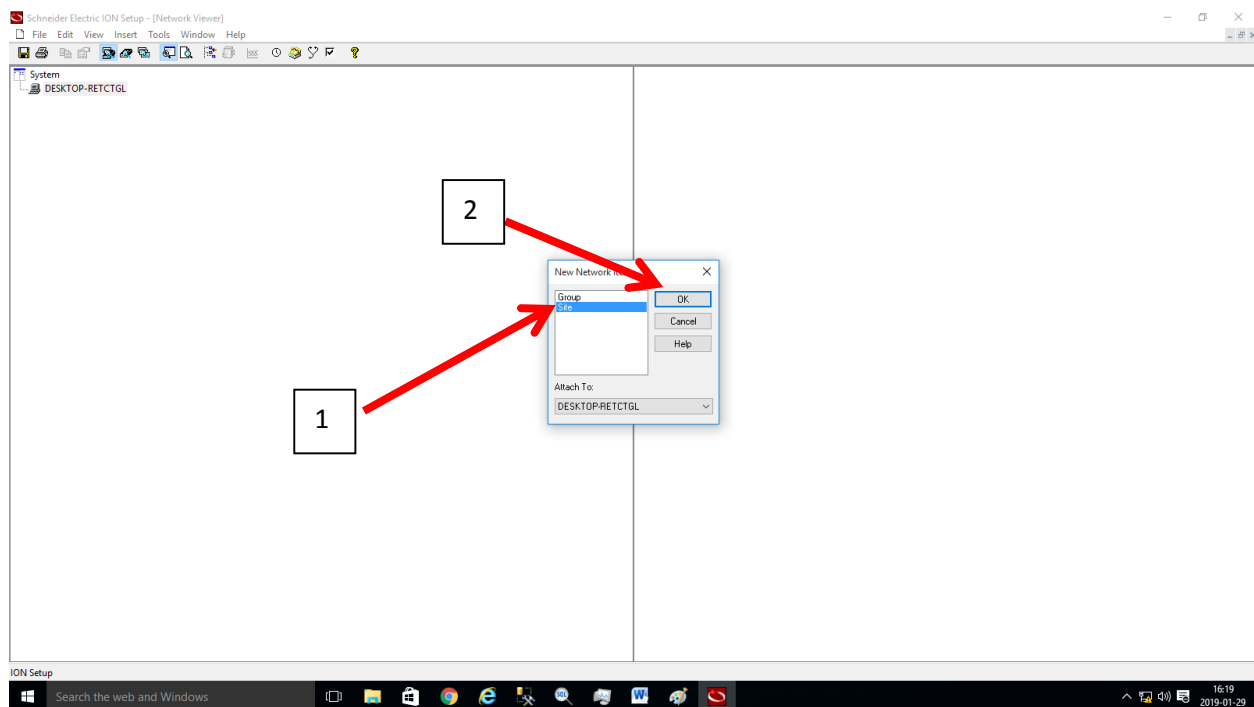
Window will open like Below Screenshots.



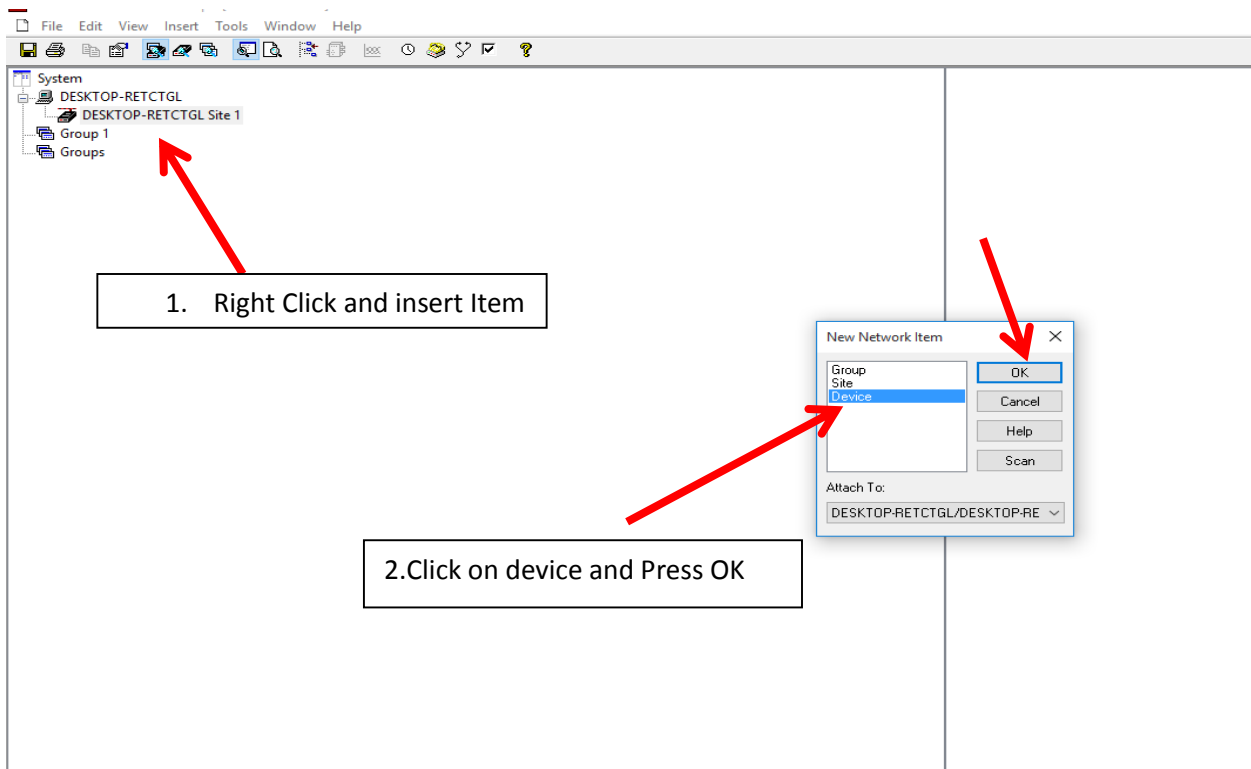
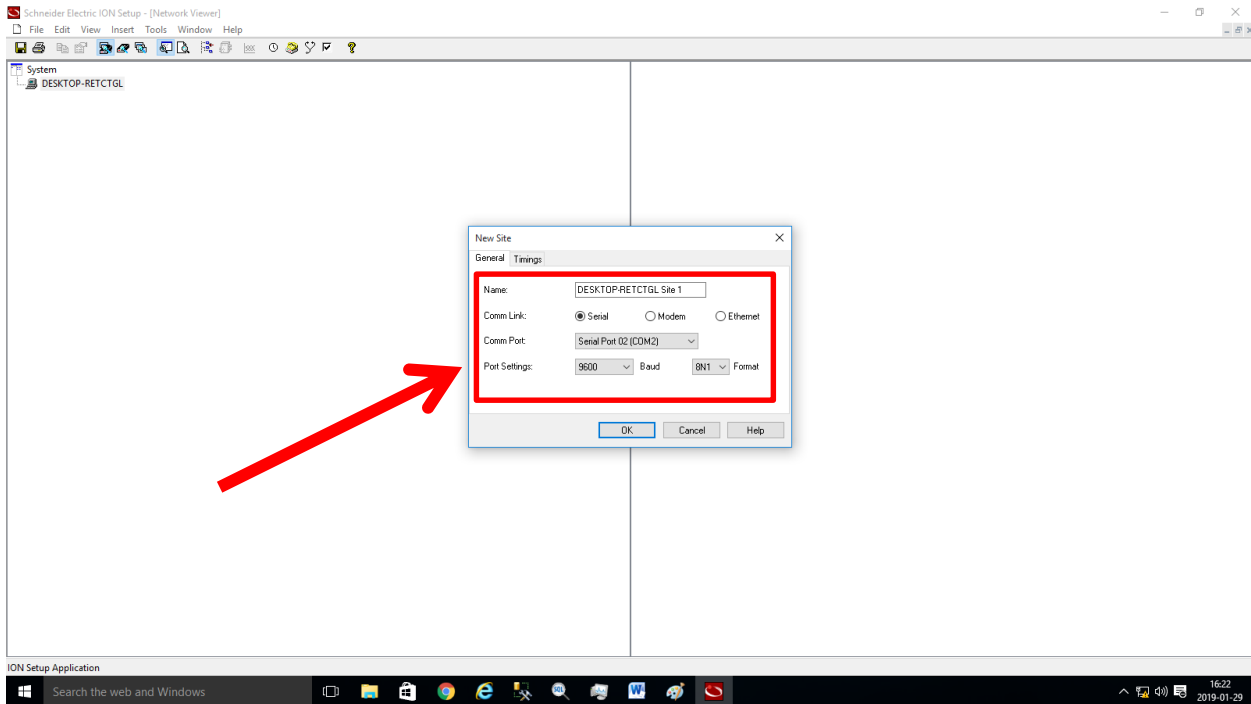
Follow steps as per mentioned in screenshots

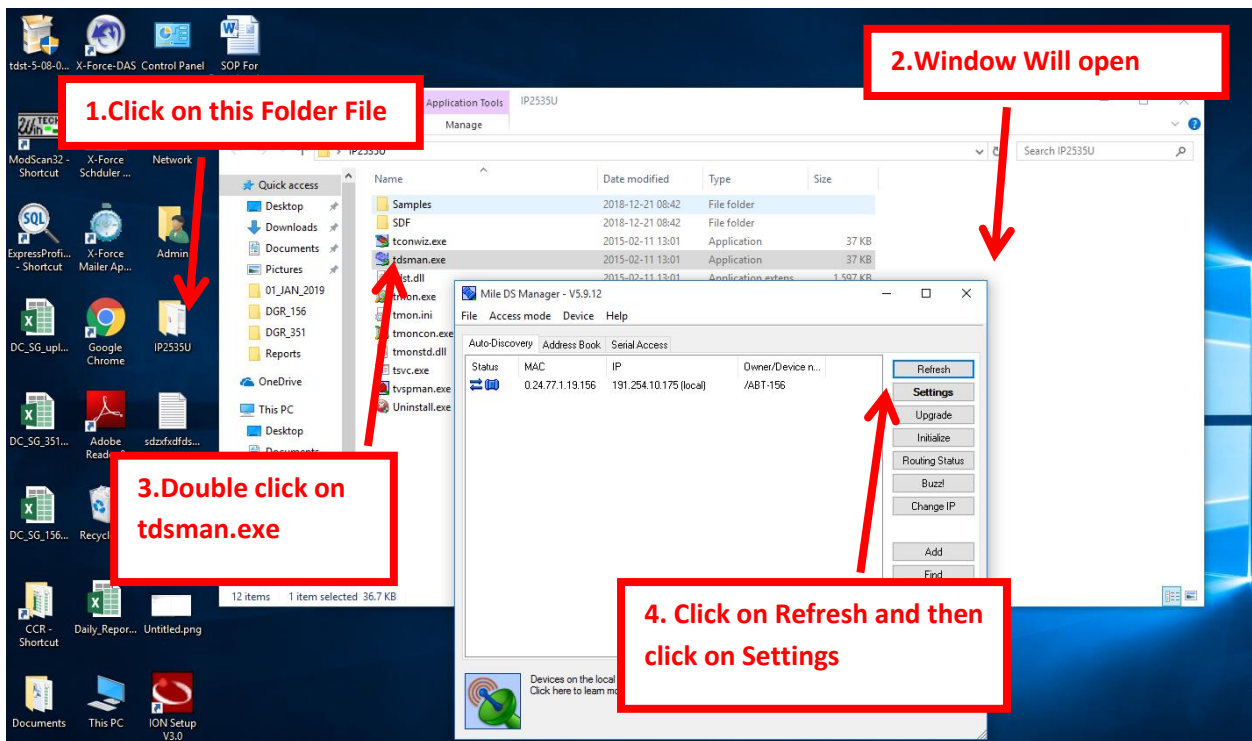
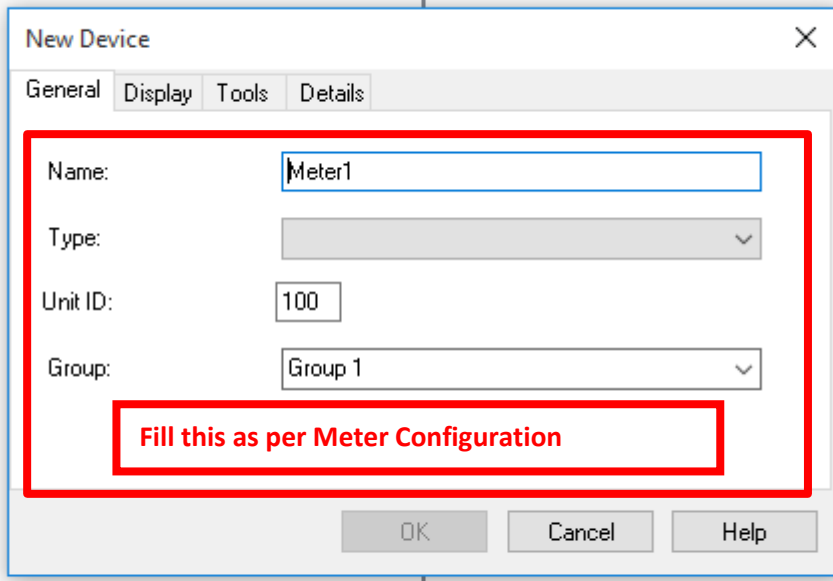


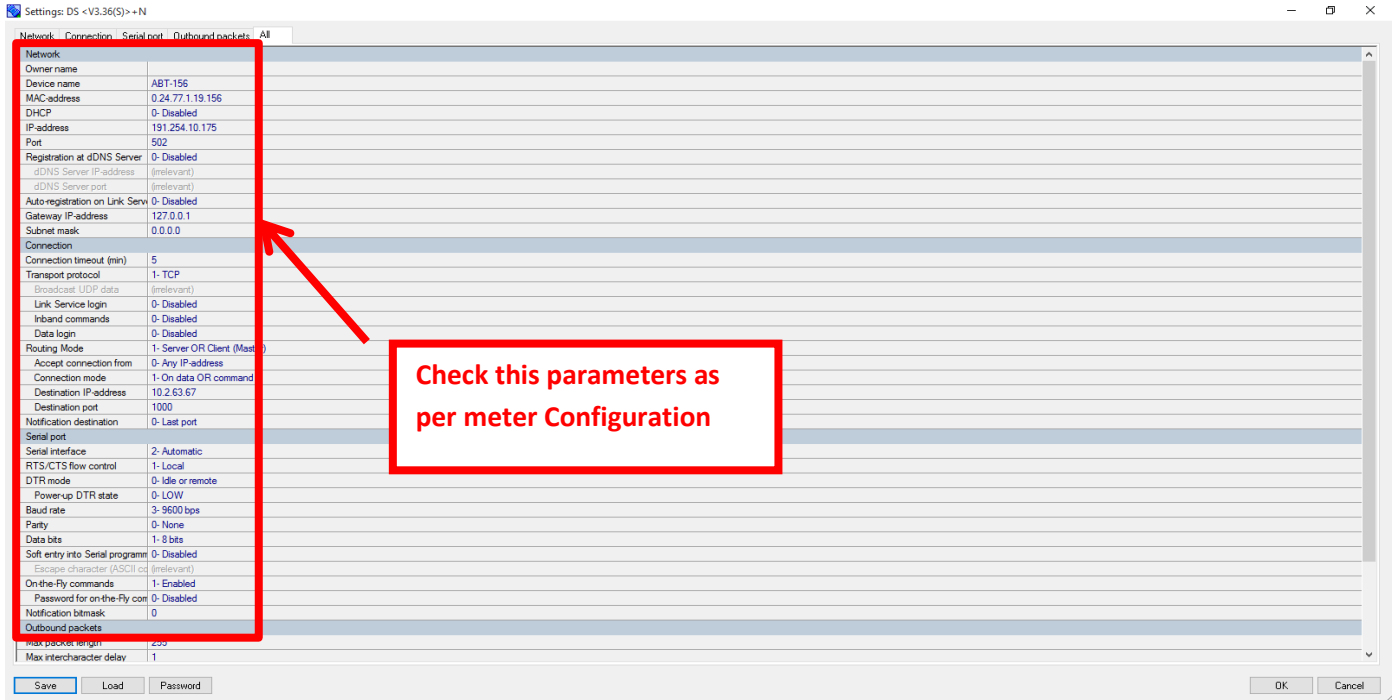
Click on **site** and press **OK**



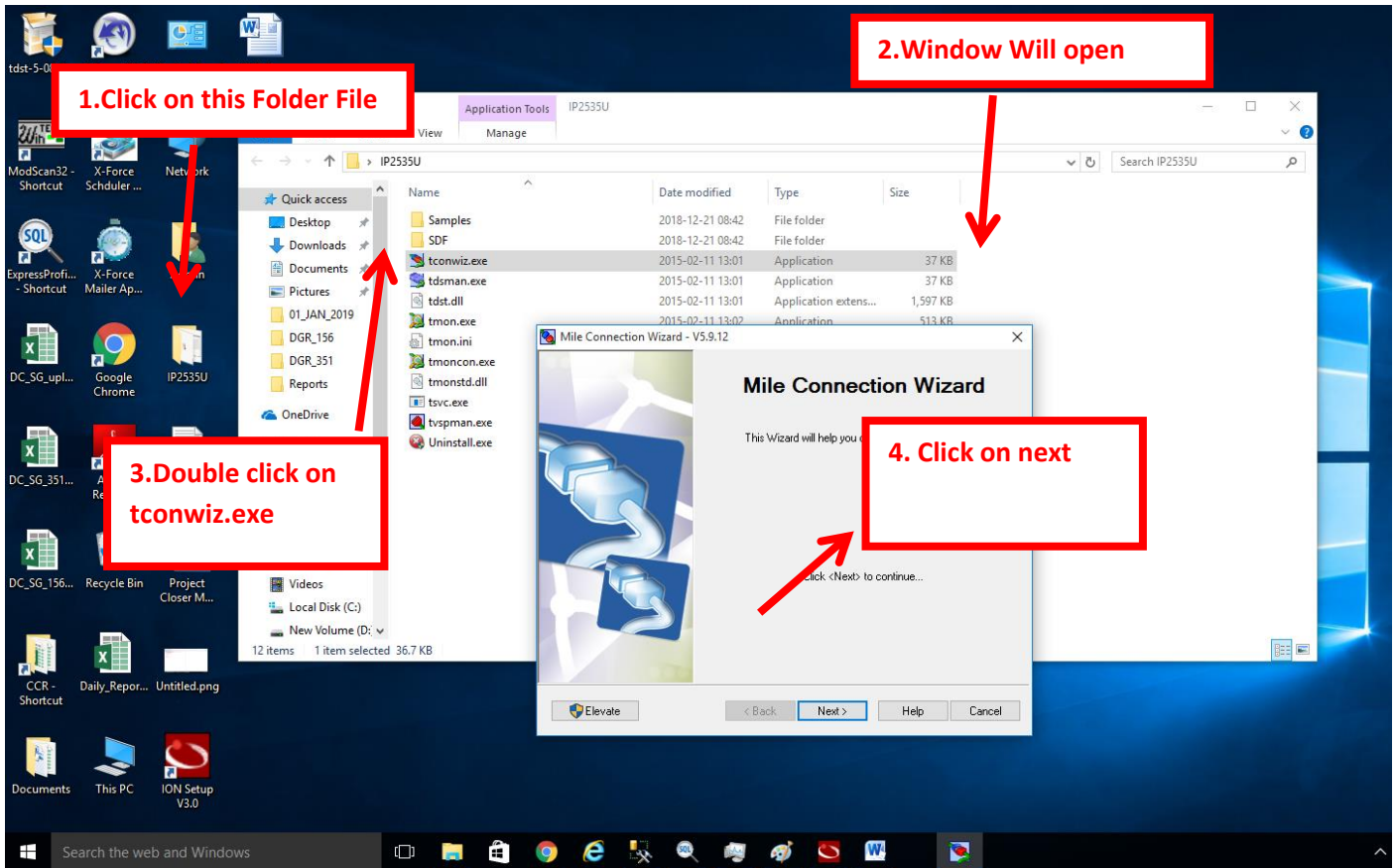
Select Protocol and communication type as per Meter Configuration.



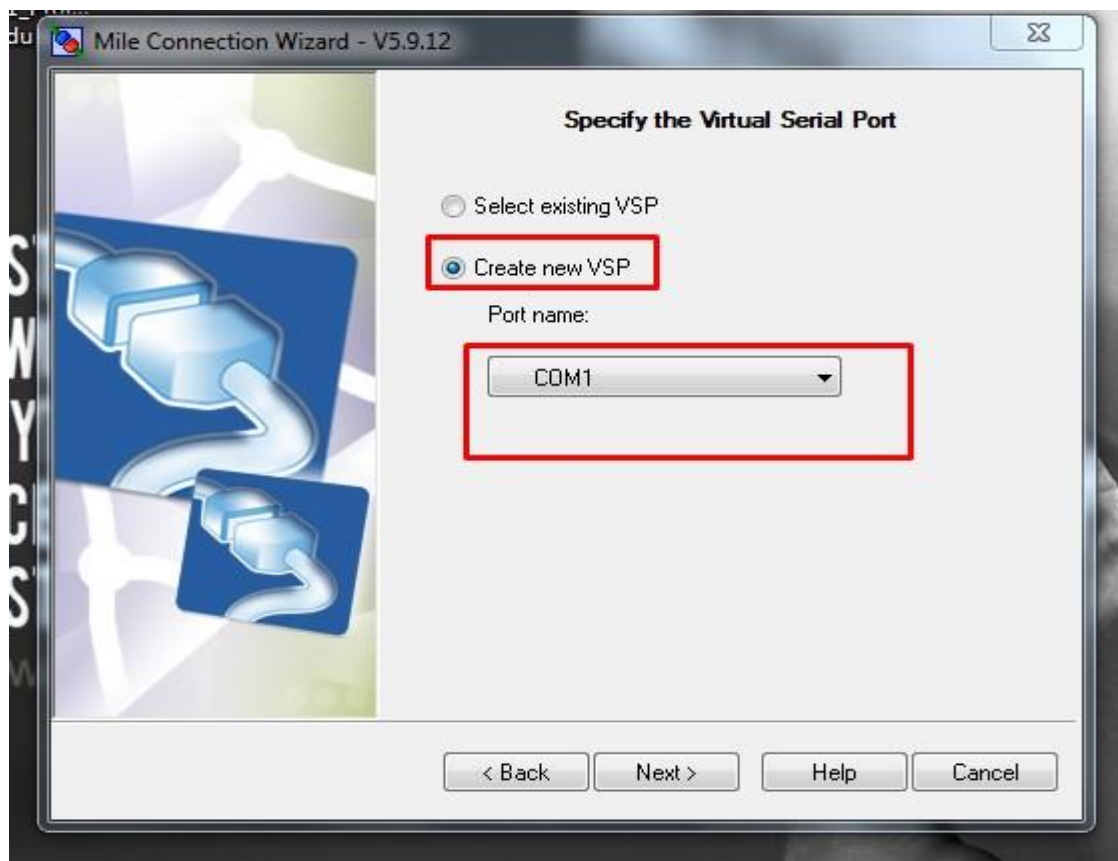
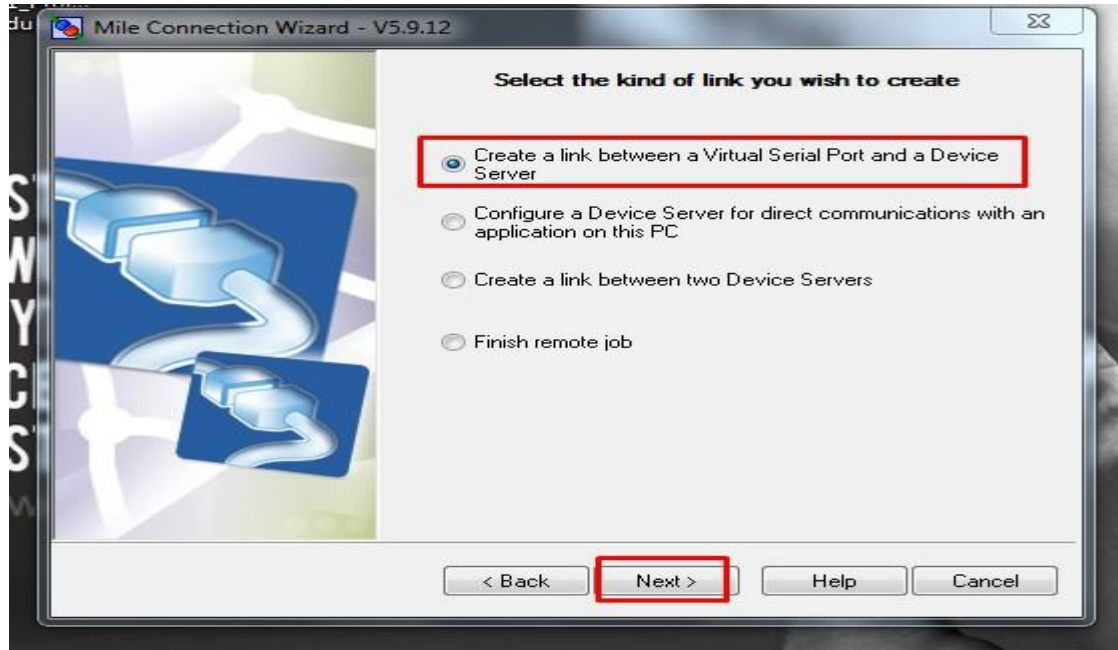


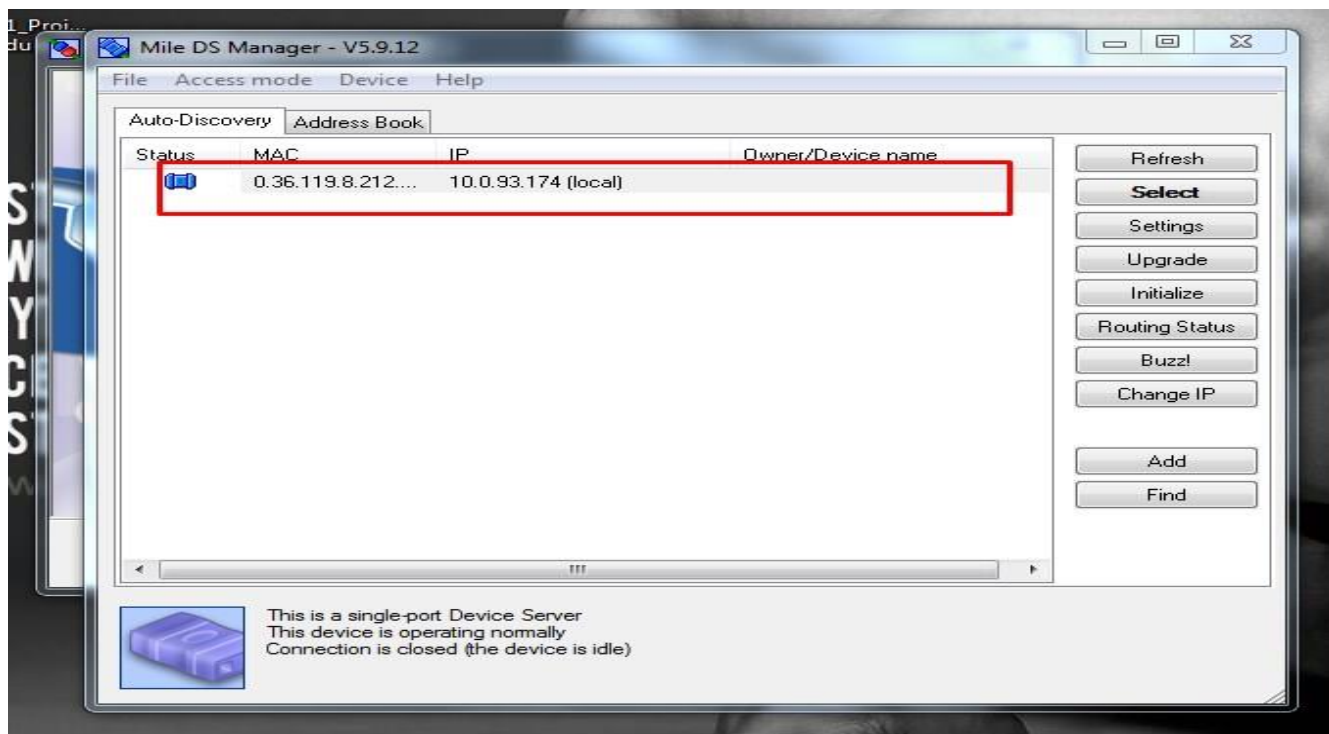
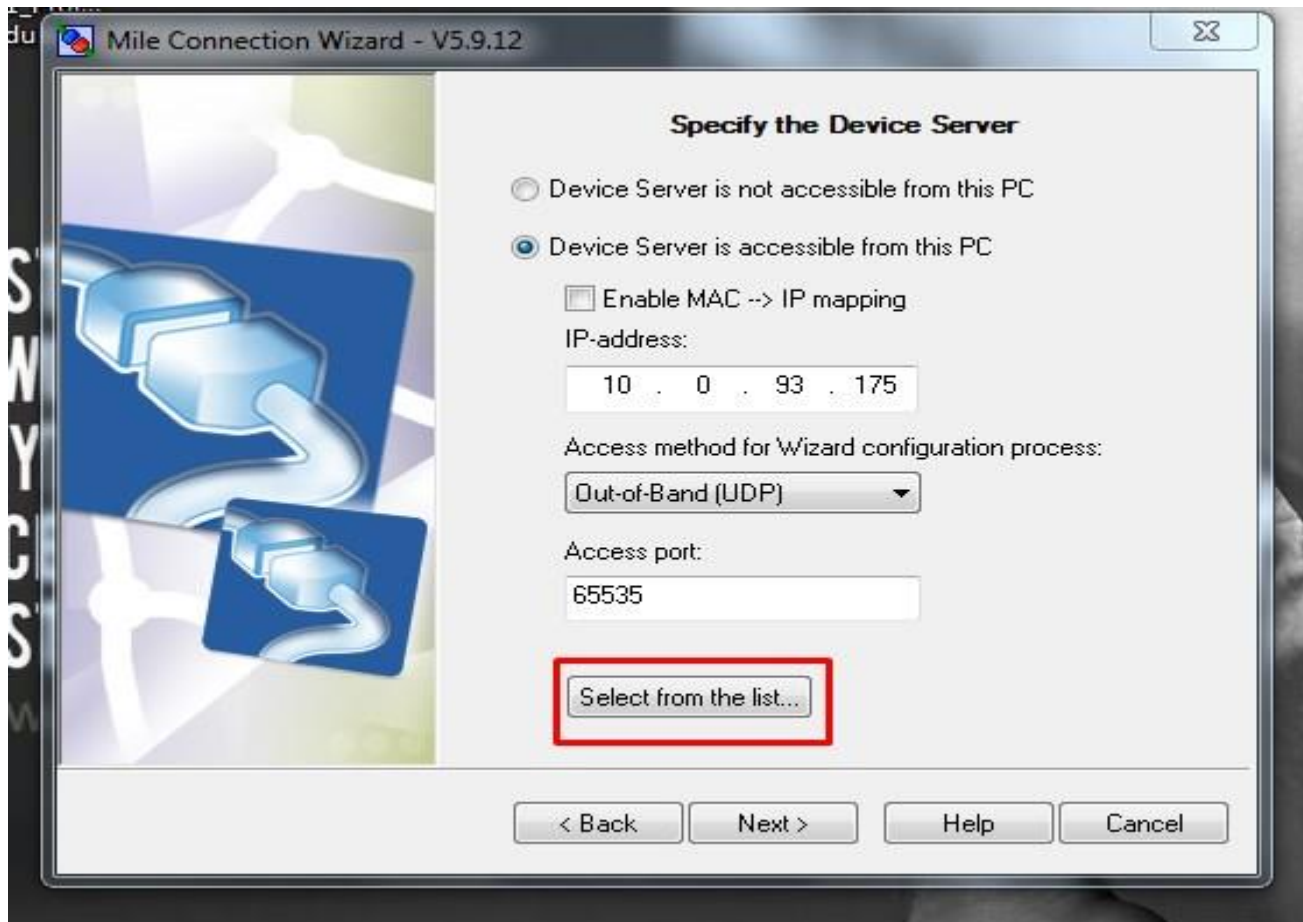


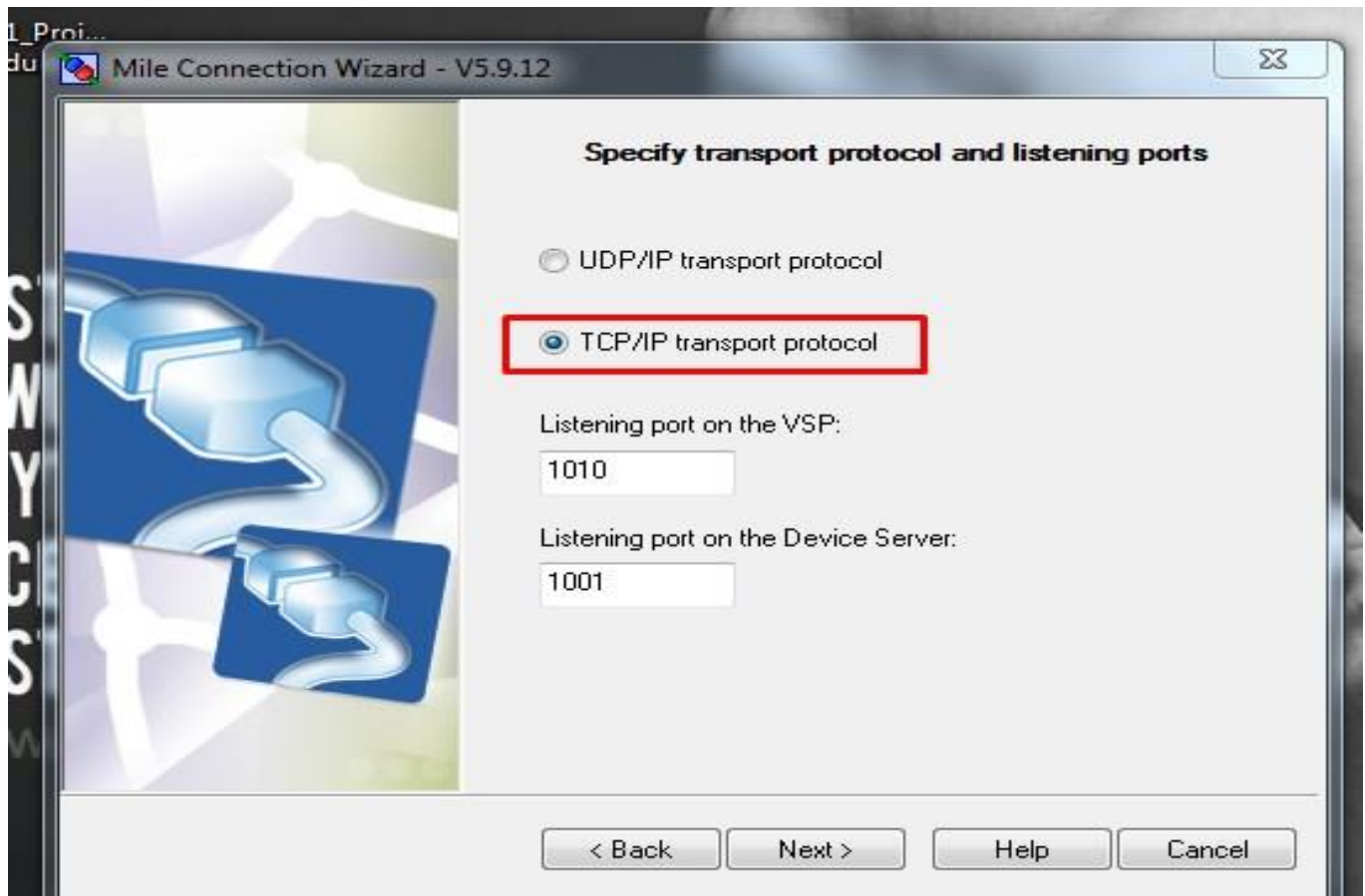
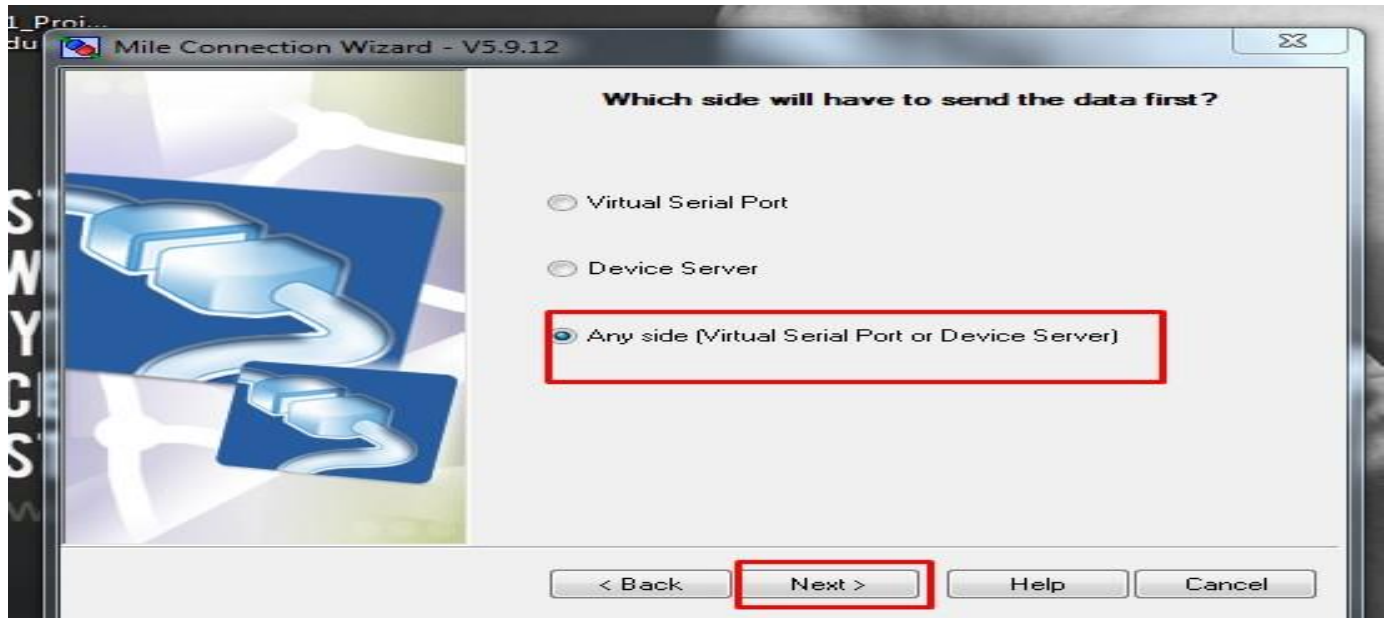
Then again

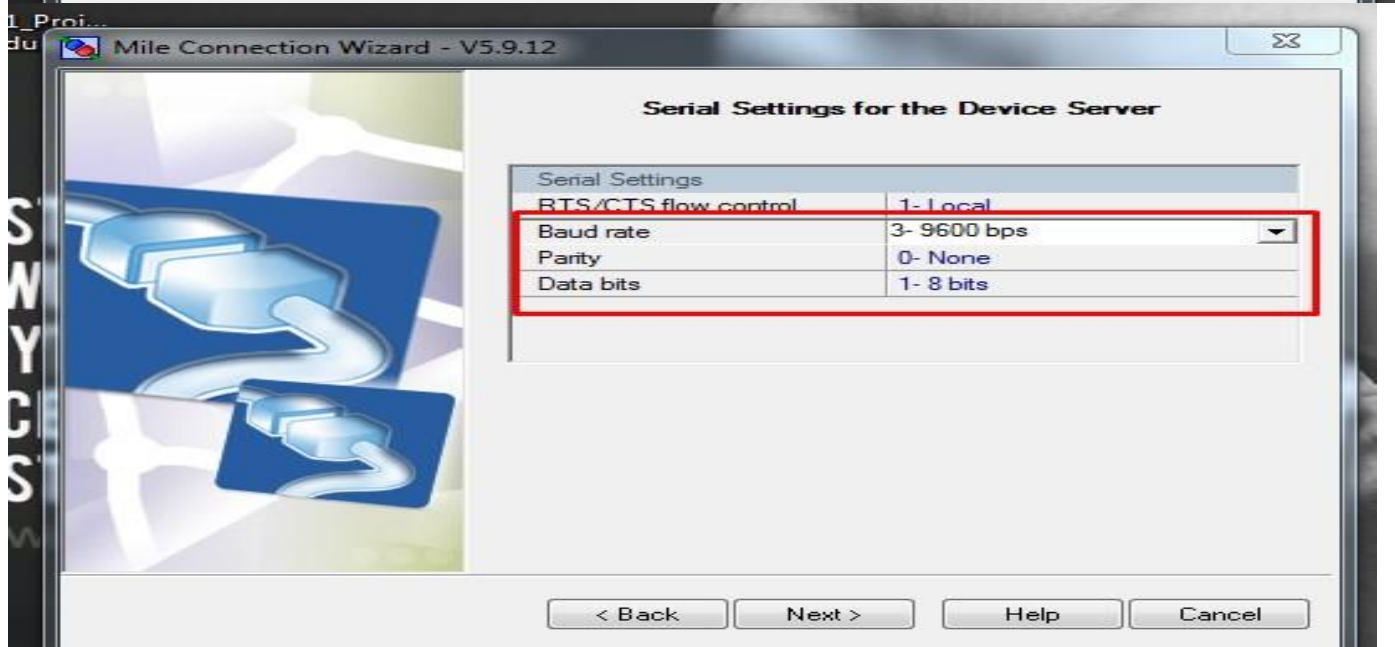
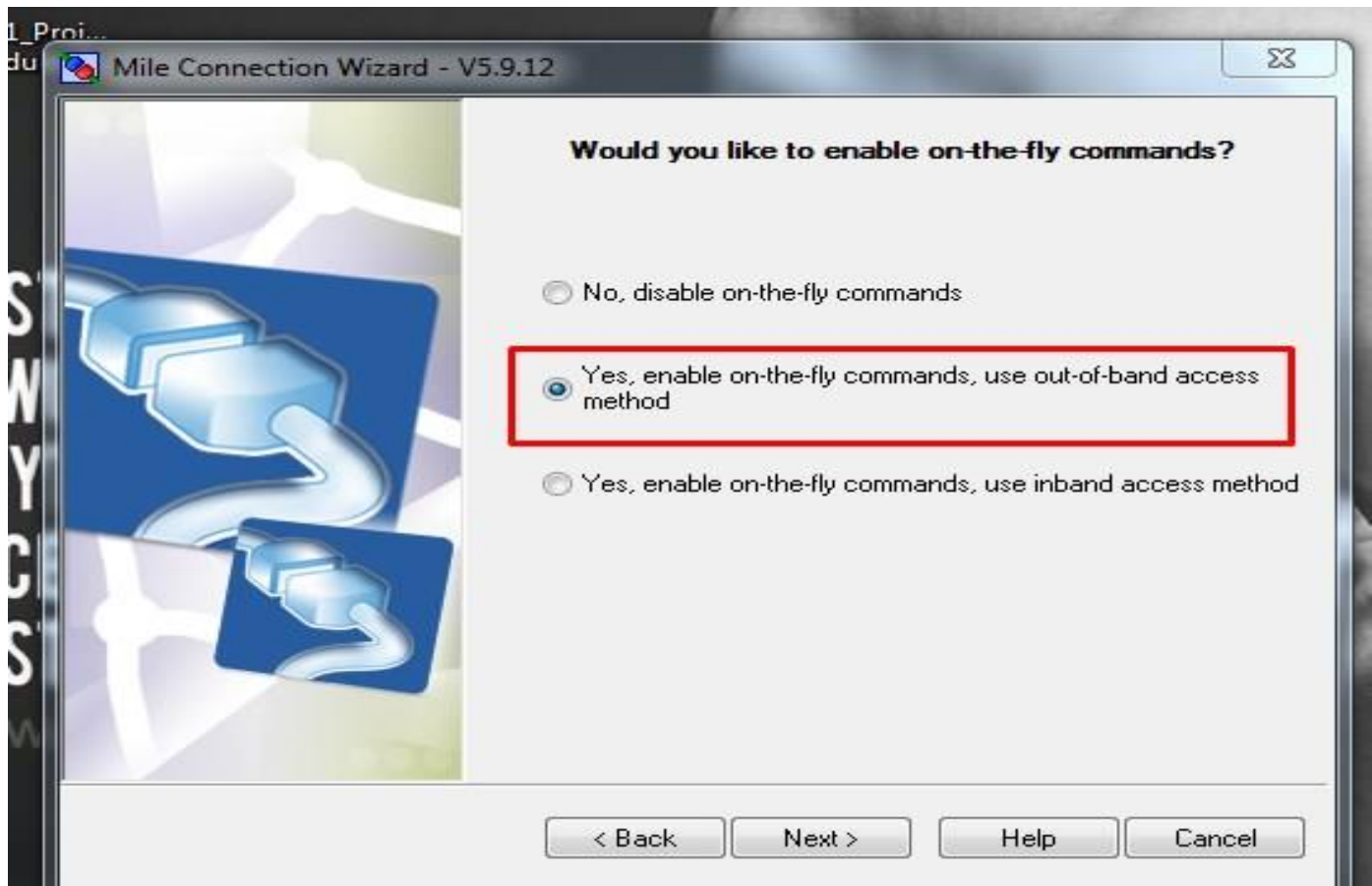


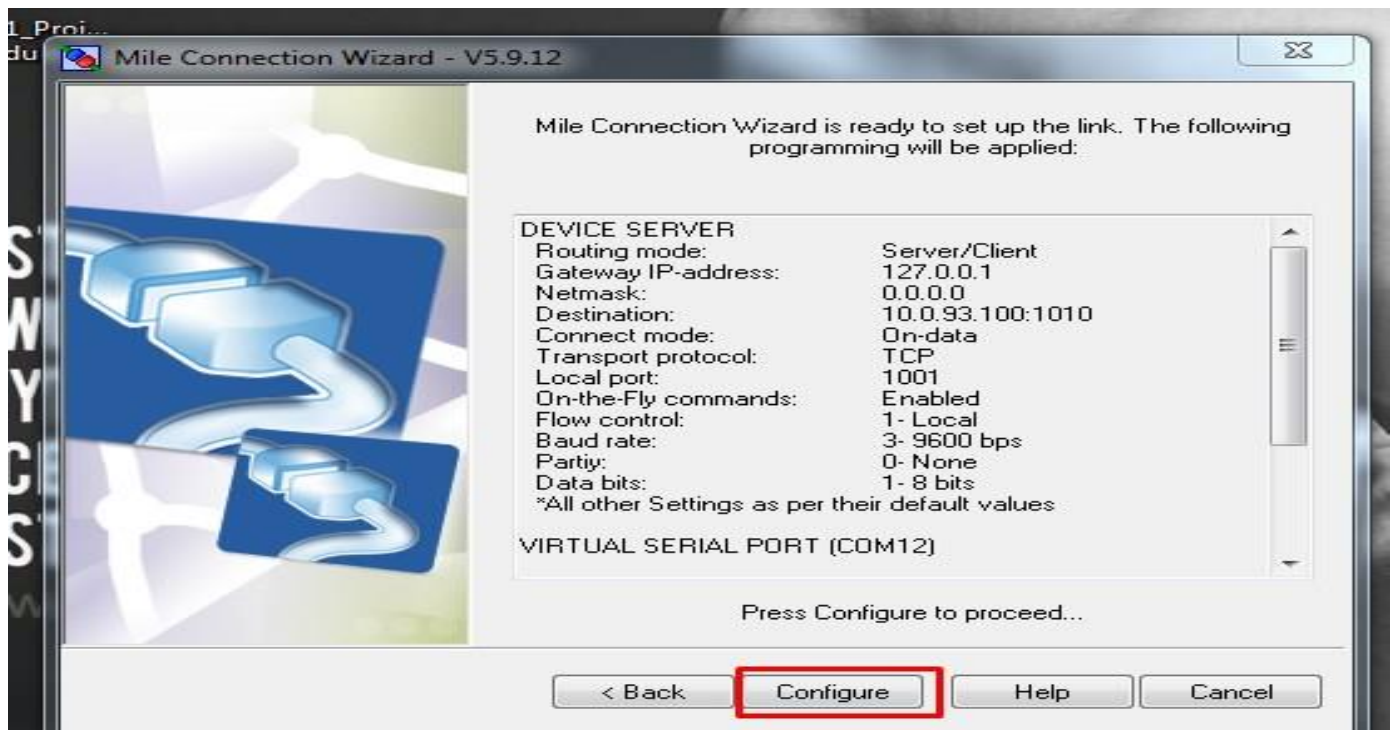
Follow Steps as per Below Screenshots



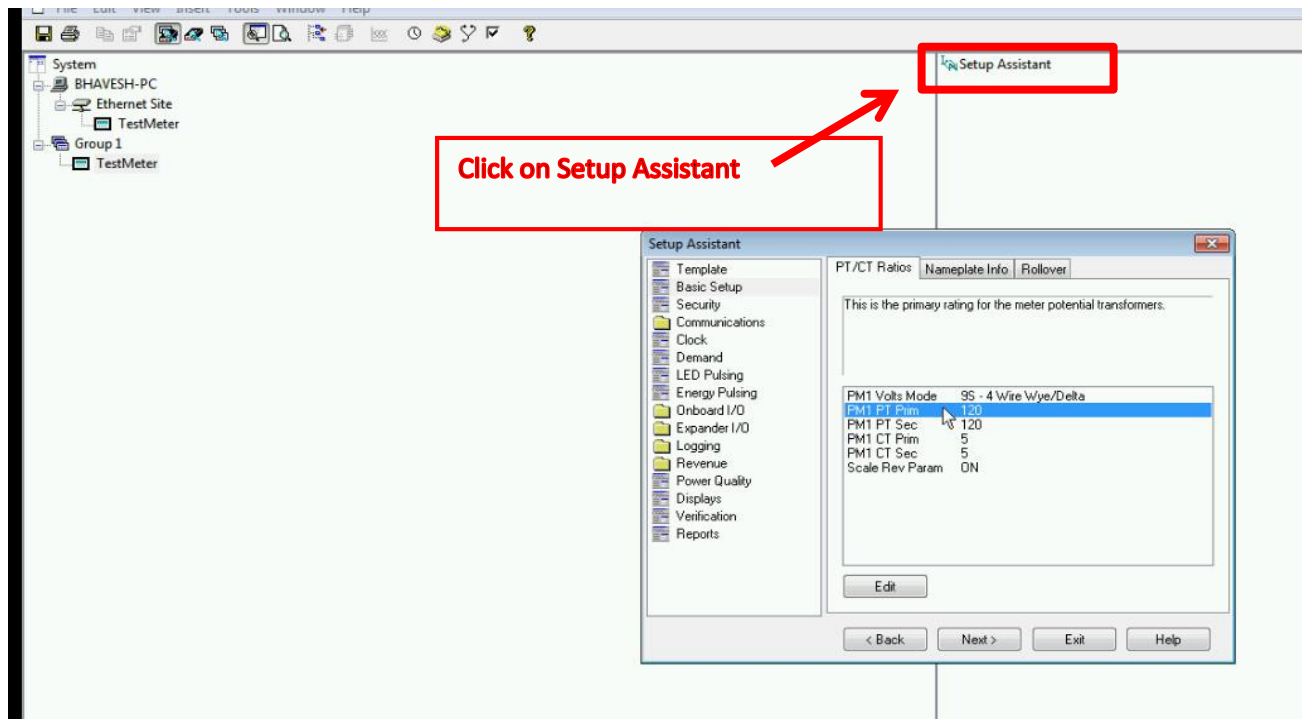




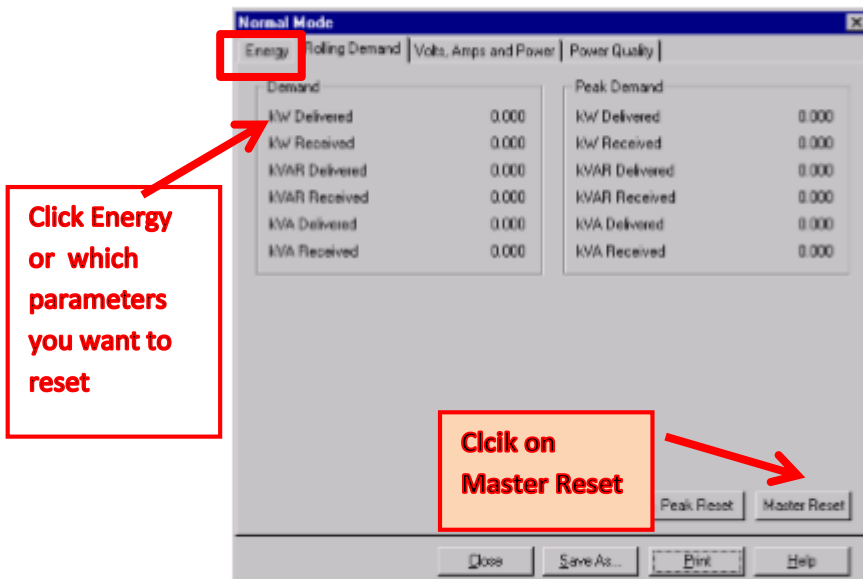
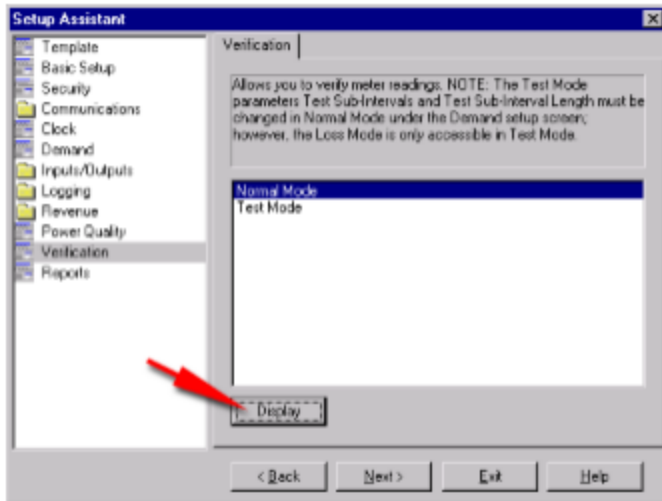




Then open ION setup and click on Meter which we add already



1. Open ION Setup and connect to your meter, using Basic Mode.
2. In the Setup Assistant, navigate to the Verification folder.
3. Select Normal Mode and click Display.



A dialog box informs you when the reset is complete.

Then it will ask for password write the password of meter and click on OK.

Thank You...

Your device is Reset successfully.