

X-Force Alarm Configurator

X-force Alarm configurator application will be used to do the configuration for the Alarm lines capture by the capture process from the DCS end. Here message identification and Field Segregation will be configured. Capture report configuration, Sequence configuration, Notification configuration will be done from the X-Force alarm configurator application.

Splash Screen

Splash Screen: A splash screen is a graphical control element consisting of a window containing image, a logo, and the current version of the software.

Splash screen typically used for notify the user that the program is in the process of loading. They provide feedback that a process is underway. Occasionally, progress bar within the splash screen indicates the loading progress. A splash screen disappears when the application's main windows appears.

Splash screen progress bar percentage wise list of application processes are as below.

- 10% - It will check that application directory having sufficient privilege or not. Application will close with "You have not sufficient privilege to directory." Message if application doesn't have sufficient.
- 20% - It will check that application having valid license or not, if application not having valid license then application will close with "License file does not exist. Please contact SSM InfoTech Solutions Pvt. Ltd. to get the valid license." Message.
- 30% - It is not having any process right now, in future if any feature are added then it will be used for that.
- 40% -
- 50% -
- 60% -
- 70%,80%,90% - It is not having any process right now, in future if any feature are added then it will be used for that.
- Application will start.

Pre-Requisite

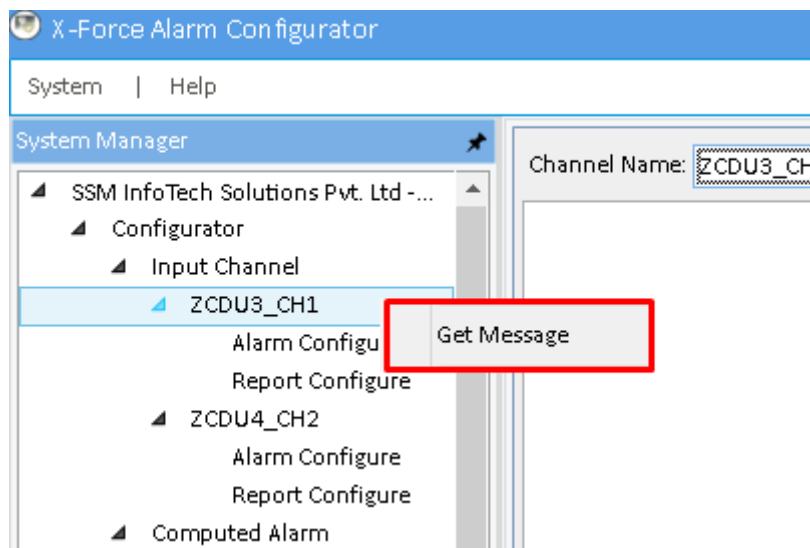
Before starting configuration of X-Force Alarm Configurator, firstly we need to do major configuration.

- 1) Give Every One Rights to the folder where X-Force OPC AE Client application is installed. if user does not give sufficient privilege to the directory then application will exit automatically.
- 2) User have to Keep License file Named "ssmxforce.lic" in the root folder where application is installed. if there is not license file in the root folder or license file is not valid or expired application should exit automatically.
- 3) If any configuration is saved previously then application should load that configuration by default.

Alarm Configuration

Alarm configuration: To split the alarm line into several fields so it gets inserted into the database for further manipulations over data.

Expand SSM InfoTech (Name of the Company) à Configurator à Input Channel. Right click on configured channel and click on Get Message for alarm configuration.



Select alarm line from Captured file that needs to be configured, copy-paste it to the get message section and click on Get Message button as shown below:

X-Force Alarm Configurator

System | Help

System Manager

- SSM InfoTech Solutions Pvt. Ltd - ...
 - Configurator
 - Input Channel
 - ZCDU3_CH1
 - Alarm Configure
 - Report Configure
 - ZCDU4_CH2
 - Alarm Configure
 - Report Configure
 - Computed Alarm
 - Alarm Sequence
 - ZCDU3_FBM/Devi ...
 - ZCDU3_SW_Fail
 - ZCDU3_M_FBM

Channel Name: ZCDU3_CH1

Get Message Stop Reset Show ASCII Save Data Show Non

4/20/2019 11:58:22 AM	alarmmesg	2019-07-24 17:00:23	UUZ761_DCS11	LI833	ALARM	IOBAD	5	70CP01	ETP CT SODA AS
4/20/2019 11:58:59 AM	alarmmesg	2019-07-24 17:00:26	UUZ761_DCS11	LI833	ALARM	IOBAD	5	70CP01	ETP CT SODA AS
4/20/2019 11:59:02 AM	alarmmesg	2019-07-24 17:00:27	UUZ761_DCS11	LI833	RETURN	IOBAD	5	70CP01	ETP CT SODA AS
4/20/2019 11:59:10 AM	alarmmesg	2019-07-24 17:00:28	Z681_DCS019	LI017	ALARM	LOABS	5	70CP01	PNT LS# 6 SUMP
4/20/2019 12:00:04 PM	alarmmesg	2019-07-24 17:00:29	Z681_DCS019	LI017	RETURN	LOABS	5	70CP01	PNT LS# 6 SUMP
4/20/2019 12:00:21 PM	alarmmesg	2019-07-24 17:00:30	Z681_DCS01C	LT067_AI1	INFO	1	70CP01	LS# 10 SUMP	
4/20/2019 12:00:38 PM	alarmmesg	2019-07-24 17:00:31	Z681_DCS01D	LI045	ALARM	LOABS	5	70CP01	PNT SLS# 4 SUMP
4/20/2019 12:01:02 PM	alarmmesg	2019-07-24 17:00:33	UUZ761_ETP38	UAXZSF102	ALARM	STATE	3	70CP03	ETP BFP- 2 PR

AlarmLine

For providing alarm line in Get Message section, go to path C:\Program Files\AlarmSuite\CapturedAlarm\ and open capture file.

This PC > Local Disk (C:) > Program Files > AlarmSuite > CapturedAlarm

SR NO	NAME	DESCRIPTION

1	Get Message	It will apply configuration of Remove Text, Replace Text and Ignore Text as done from X-Force Alarm Web
2	Stop	It will stop printing data
3	Reset	It will reset the Get Message Section
4	Show ASCII	If you want to see ASCII value while applying Remove-Replace-Ignore configuration then click on this button. By this step, button name will be changed to Normal
5	Save Data	If you want to save selected alarm lines.
6	Show Non Configure Alarm	If you want to load non configured alarms then first select database name from dropdown then click on this button.
7	Save Sample File	If you want to save alarms after Remove-Replace-Ignore configuration applied.

❓ Select alarm line that you want to configure and then click on Configure Message button.

X-Force Alarm Configurator

System | Help

Channel Name: ZCDU3_CH1

Get Message Stop Reset Show ASCII Save Data Show Non Configure Alarm Database List: xforce_19_Sep_01to30

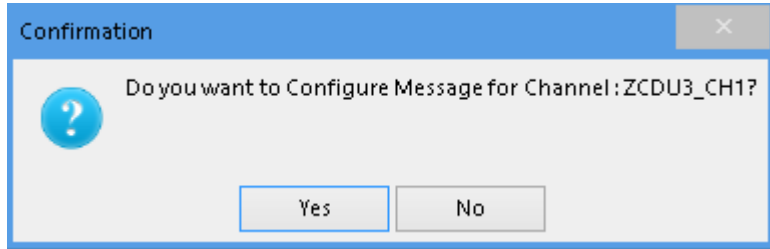
AlarmLine

4/20/2019 11:58:22 AM	alarmmesg	2019-07-24 17:00:23	UUZ761 DCS11	LI833	ALARM	IOBAD	5	70CP01	ETP CT SODA ASH TANK	0	496.2788	70-DCS-001FBM700111 PT03
4/20/2019 11:58:59 AM	alarmmesg	2019-07-24 17:00:26	UUZ761 DCS11	LI833	ALARM	IOBAD	5	70CP01	ETP CT SODA ASH TANK	0	496.2788	70-DCS-001FBM700111 PT03
4/20/2019 11:59:02 AM	alarmmesg	2019-07-24 17:00:27	UUZ761 DCS11	LI833	RETURN	IOBAD	5	70CP01	ETP CT SODA ASH TANK	0	496.2788	70-DCS-001FBM700111 PT03
4/20/2019 11:59:10 AM	alarmmesg	2019-07-24 17:00:28	Z681 DCS019	LI017	ALARM	LOABS	5	70CP01	PNT LS # 6 SUMP	0	20	19.95352 LEVEL LOW
4/20/2019 12:00:04 PM	alarmmesg	2019-07-24 17:00:29	Z681 DCS019	LI017	RETURN	LOABS	5	70CP01	PNT LS # 6 SUMP	0	20	22.09875 LEVEL LOW
4/20/2019 12:00:21 PM	alarmmesg	2019-07-24 17:00:30	Z681 DCS01C	LT067 AI1	INFO	1	70CP01	LS # 10 SUMP	0	22.09875	FF Block Error: Input Fail	
4/20/2019 12:00:38 PM	alarmmesg	2019-07-24 17:00:31	Z681 DCS01D	LI045	ALARM	LOABS	5	70CP01	PNT SLS # 4 SUMP	0	20	19.99805 LOW LEVEL
4/20/2019 12:01:02 PM	alarmmesg	2019-07-24 17:00:33	UUZ761 ETP38	UAXZSF102	ALARM	STATE	3	70CP03	ETP BFP- 2 PROXIMITY SWITCH	0	82.97204	

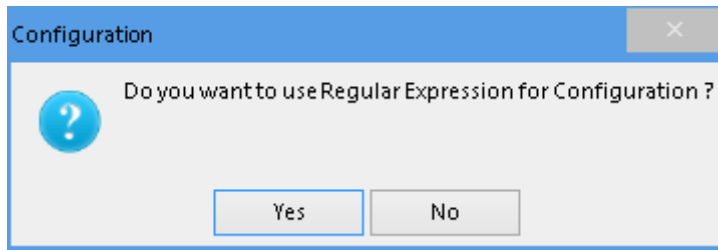
Configure Message Save SampleFile Close

TESTDEV1292\SERVER1292_2012 | XForce Alarm Configurator Loaded Successfully. SSM Infotech Solutions Pvt. Ltd. 15.19.02.0104

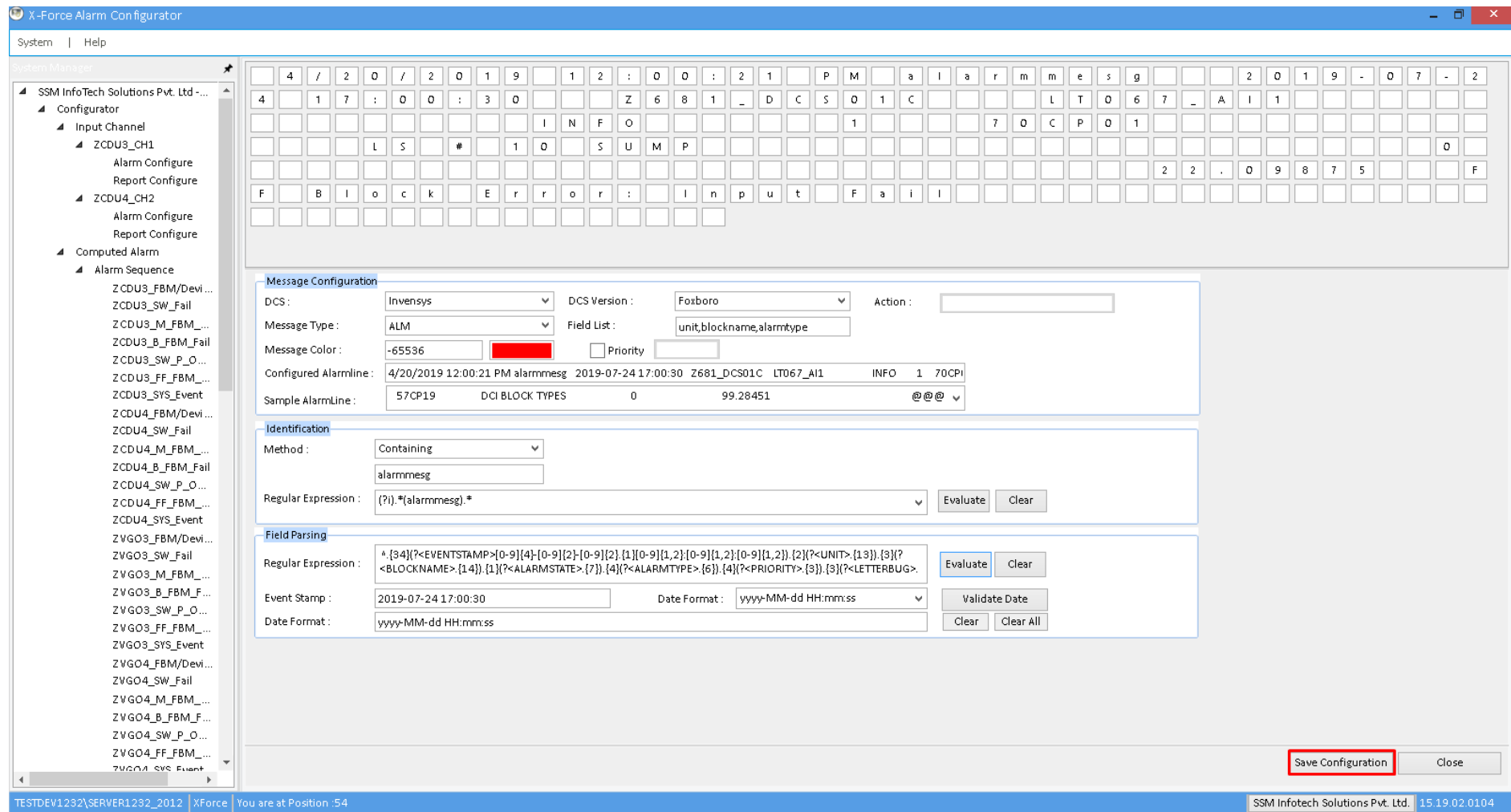
It will display following confirmation message. Click on Yes.



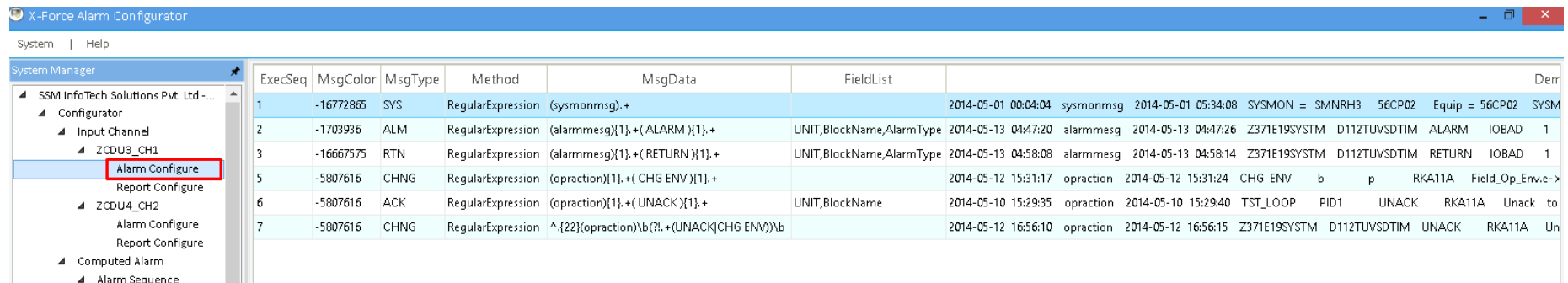
It will ask you to use regular expression or not for the configuration. Click on Yes.



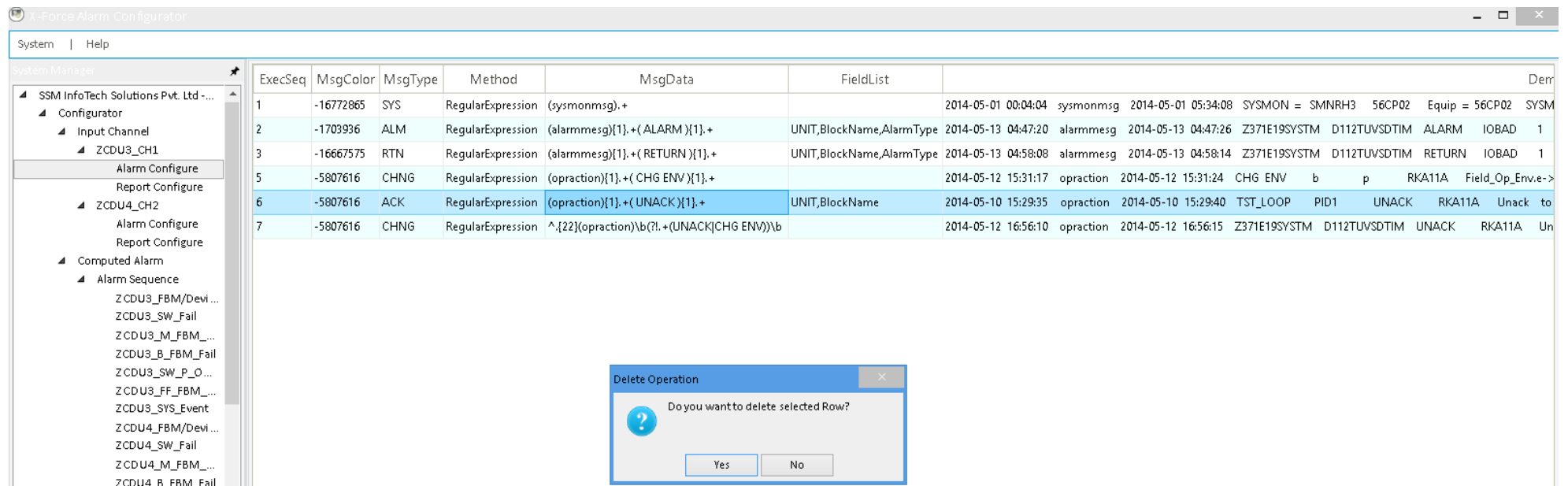
Do the alarm configuration and click on Save Configuration button.



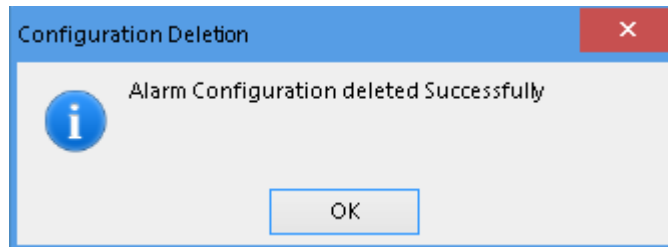
 You can find the configuration by clicking on Alarm Configure as shown below for the particular channel.



❓ If you want to delete any configuration then select that configuration and press Delete key. Click on Yes for the deletion.



After successfully deletion of configuration, it will display below message:



SR NO	NAME	DESCRIPTION
1	Get Message	It will apply configuration of Remove Text, Replace Text and Ignore Text as done from X-Force Alarm Web
2	Stop	It will stop printing data
3	Reset	It will reset the Get Message Section
4	Show ASCII	If you want to see ASCII value while applying Remove-Replace-Ignore configuration then click on this button. By this step, button name will be changed to Normal
5	Save Data	If you want to save selected alarm lines.
6	Show Non Configure Alarm	If you want to load non configured alarms then first select database name from dropdown then click on this button.
7	Save Sample File	If you want to save alarms after Remove-Replace-Ignore configuration applied.
8	Method	Identification method type for alarm line identification.

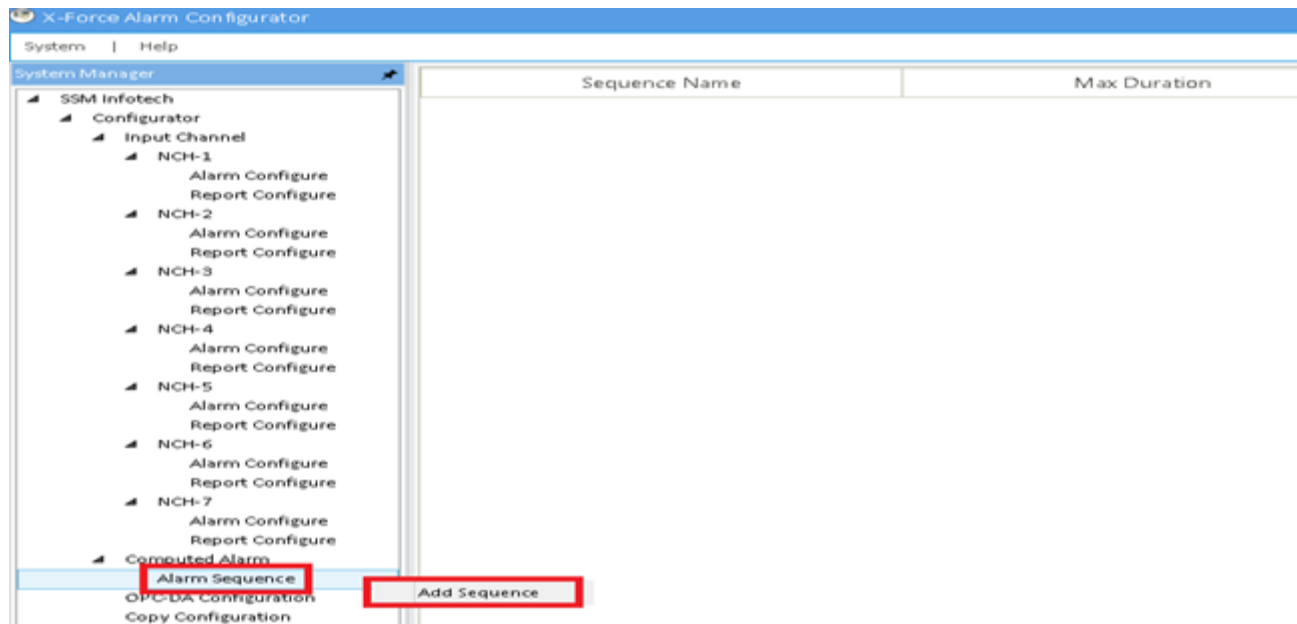
9	Regular expression	Regular expression for validate identification keyword with alarm line
10	Regular expression for field parsing	As name suggest regular expression is used for field parsing of alarm line
11	Event stamp	Event stamp sample for validate alarm line event stamp with configure date time format.
12	Date format	Format for the event stamp of alarm line

Sequence Configuration

Alarm Sequence :

To set the computed alarm configurations from Alarm Configurator Application, below steps need to be followed:

1.Right click on Alarm Sequence and click on Add Sequence.



General Tab

Name : Provide sequence name you

Maximum Duration :

Channel Name: select channel from dropdown list for which you want to create sequence

Default Colour: select default colour for that sequence

save button : on save button click user will get popup for save data successfully and redirect to the list page where all sequence list will be displayed including new one.

Cancel : on click of cancel page will redirect to Sequence list page

System | Help

System Manager

- SSM InfoTech Solutions Pvt. Ltd - ...
 - Configurator
 - Input Channel
 - ZCDU3_CH1
 - Alarm Configure
 - Report Configure
 - ZCDU4_CH2
 - Alarm Configure
 - Report Configure
 - Computed Alarm
 - Alarm Sequence
 - ZCDU3_FBM/Devi...
 - ZCDU3_SW_Fail
 - ZCDU3_M_FBM_...
 - ZCDU3_B_FBM_Fail
 - ZCDU3_SW_P_O...
 - ZCDU3_FF_FBM_...
 - ZCDU3_SYS_Event
 - ZCDU4_FBM/Devi...
 - ZCDU4_SW_Fail

General | Insert Field | SMS | PLC | Instant Mail | Direct Printing | POP UP | Dynamic Alarm Suppression

Name : Maximum Duration : min(s)

Channel Name : Default Color :

Create Trigger

? Now right Click on the Sequence Name and click on Add Trigger as shown below:



System | Help

System Manager

SSM InfoTech Solutions Pvt. Ltd - ...

Configurator

Input Channel

ZCDU3_CH1

Alarm Configure

Report Configure

ZCDU4_CH2

Alarm Configure

Report Configure

Computed Alarm

Alarm Sequence

ZCDU3_FBM/Devi ...

ZCDU3_SW_Fail

ZCDU3_M_FBM_...

ZCDU3_B_FBM_Fail

ZCDU3_SW_P_O ...

ZCDU3_FF_FBM_...

ZCDU3_SYS_Event

ZCDU4_FBM/Devi ...

ZCDU4_SW_Fail

ZCDU4_M_FBM_...

ZCDU4_B_FBM_Fail

ZCDU4_SW_P_O ...

ZCDU4_FF_FBM_...

ZCDU4_SYS_Event

ZVGO3_FBM/Devi ...

ZVGO3_SW_Fail

ZVGO3_M_FBM_...

ZVGO3_B_FBM_F...

ZVGO3_SW_P_O ...

ZVGO3_FF_FBM_...

ZVGO3_SYS_Event

ZVGO4_FBM/Devi ...

ZVGO4_SW_Fail

Trigger

Trigger Name :

Trigger Duration : min(s)

Positive Trigger Negative Trigger

Query Builder

AlarmState

AlarmType

Comment

EngUnits

RecvTime

MsgType

GroupName

Parameter

IValue

Limit

IOldValue

sOldValue

ChannelName

Priority

Provider

TagName

Remark

Field Name :

Operator :

First Value :

Add "," Separated value for insertion of Multiple value

Insert Browse All

Add Custom

()

AND OR NOT

Remove Clear

Select All

Type & Press Enter To

SR NO	FIELD NAME	DESCRIPTION
1	Trigger Name	Name of the Trigger
2	Positive Trigger	Condition for Positive Trigger. Positive trigger will be the Critical condition for abnormality.
3	Negative Trigger	Condition for Negative Trigger. Negative trigger will be the reset condition for Critical situation.

Query Builder

Using Query builder user can create different conditions with the help of logical operators and predefined fields.

Insert Field

Generate Alarm : If this flag is selected then alarm will be generated and its configured notification will be active like SMS,Mail etc.

As shown In image select **field name** from left panel and accordingly in generate Alarm panel(Right Panel) value of alarm state will differ for different field.

If **field name** is having various values in database then it will show in dropdown list against AlarmState and even user can add cutom value as well

If there is no value in Database then textbox will be visiblr against **AlarmState**

System Manager

- SSM InfoTech Solutions Pvt. Ltd - ...
 - Configurator
 - Input Channel
 - ZCDU3_CH1
 - Alarm Configure
 - Report Configure
 - ZCDU4_CH2
 - Alarm Configure
 - Report Configure
 - Computed Alarm
 - Alarm Sequence
 - ZCDU3_FBM/Devi ...
 - ZCDU3_SW_Fail
 - ZCDU3_M_FBM_...
 - ZCDU3_B_FBM_Fail
 - ZCDU3_SW_P_O...
 - ZCDU3_FF_FBM_...
 - ZCDU3_SYS_Event
 - ZCDU4_FBM/Devi ...
 - ZCDU4_SW_Fail
 - ZCDU4_M_FBM_...
 - ZCDU4_B_FBM_Fail
 - ZCDU4_SW_P_O...

General **Insert Field** SMS PLC Instant Mail Direct Printing POP UP Dynamic Alarm Suppression

☒ Generate Alarm

Field Name
AlarmState
AlarmType
Comment
EngUnits
EventStamp
MsgType
GroupName
Parameter

Generate Alarm

Select Method : After Last Position

Displacement

AlarmState

Field Name	Starting Method	Ab Pos/Displacement	Field Data
------------	-----------------	---------------------	------------

Excel Import

Excel Import : This functionality is used to import dat from excel file and insert into given database and given table.

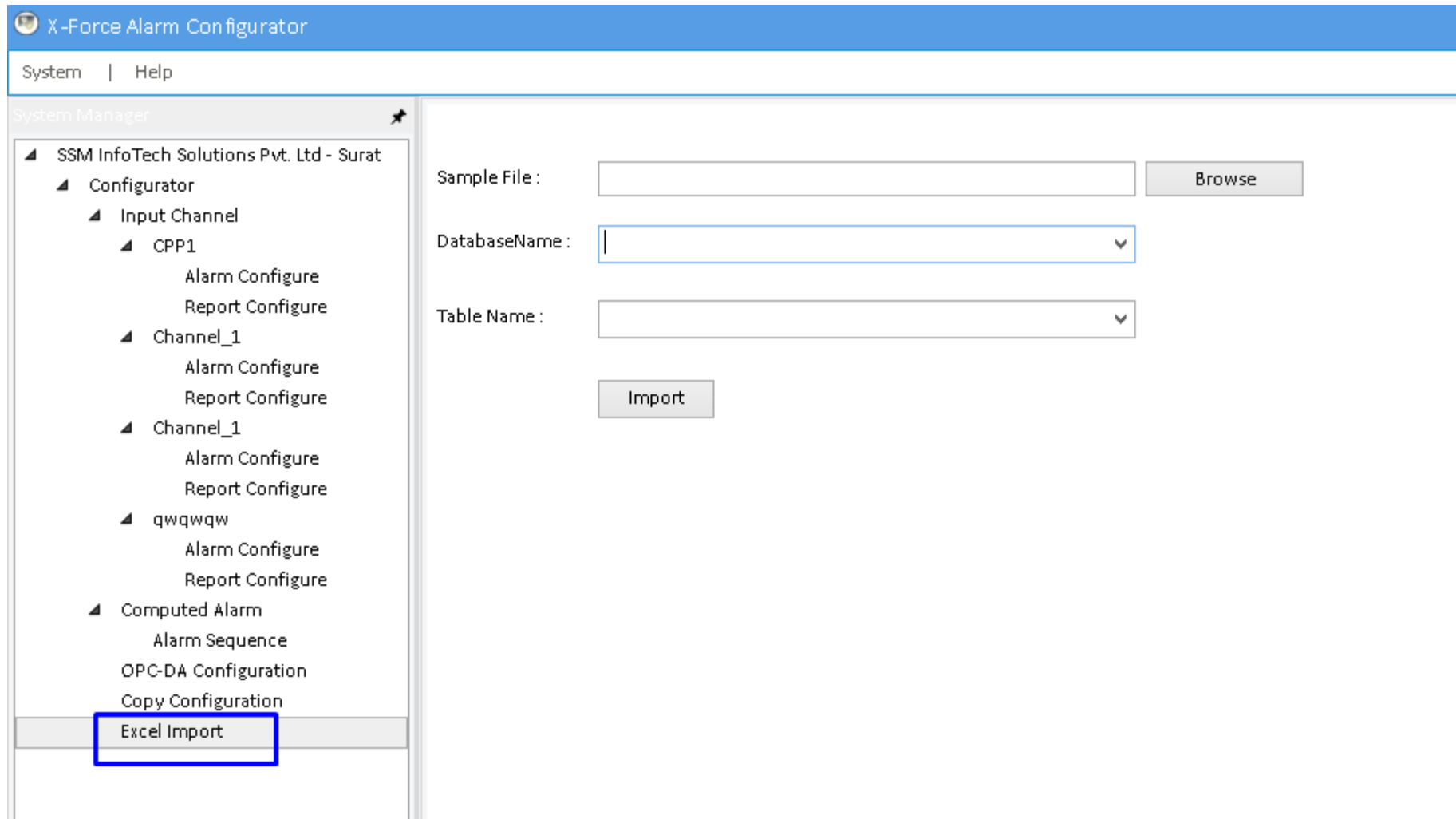
By clicking on excel import you will have 3 options on screen:

Sample File : select a sample excel file that contains data that need to be inserted in respective table.

Database Name : Provide database name from the drop down.

Table Name : Provide Table name from the drop down.

Click on import to insert data into selected table.



OPC DA Configuration

Copy Configuration

Copy onfiguration : Copy configuration of one channel to another channel. User can copy configuration from single or multiple channel. It includes Alarm configuration including remove-Replace-Ignore configuration, Production report configuration.

Copy To Channel : User has a drop down that in which channel they needs to copy configuration.

Copy from single channel/copy from multiple channel : User can select copy configuration from single or multiple channel. By selecting any of the option from these two than two disfferent pannels will be activated accordingly for single and multiple selection.

Single channel : In single channel pannel user has a drop down to select a channel from which you eant to copy configuration. User has a options to have configuration regarding Remove Text, Replace Text, Ignore Text, Alarms and reports.

Multiple Channel : In multiple channel pannel user has all the same 5 options , each with having drop down of channels. So, user can copy different configuration fom different channels.

X-Force Alarm Configurator

System | Help

System Manager

- SSM InfoTech Solutions Pvt. Ltd - Surat
 - Configurator
 - Input Channel
 - CPP1
 - Alarm Configure
 - Report Configure
 - Channel_1
 - Alarm Configure
 - Report Configure
 - Channel_1
 - Alarm Configure
 - Report Configure
 - qwqwqw
 - Alarm Configure
 - Report Configure
 - Computed Alarm
 - Alarm Sequence
 - OPC-DA Configuration
 - Copy Configuration**
 - Excel Import

Copy To Channel : Channel_1

☒ Copy from Single Channel
☐ Copy from Multiple Channel

Single Channel

Copy From Channel : Channel_1

☐ Remove Text ☐ Alarms
☐ Replace Text ☐ Reports
☐ Ignore Message

Multiple Channel

<input type="checkbox"/> Remove Text	Channel_1	<input type="checkbox"/> Alarms	Channel_1
<input type="checkbox"/> Replace Text	Channel_1	<input type="checkbox"/> Reports	Channel_1
<input type="checkbox"/> Ignore Message	Channel_1		

Report Configuration

Few industries have that logs in form of reports that are daily Production reports along with the Alarm so the report are also required to be analyses for the Plant owners for such a purpose Report capturing module is Used. It takes the data and Passes and forms a capture file, this capture file is configured as per the Reports significance. The processing is done through the Data Link which in turns parse the reports and saves it into the Excel HTML and other given format Report Capturing Module that allow you configure four type of report.

1. TXT
2. XDF
3. XLS / XLSX
4. HTML

Configuration	Mail Option	Print Option	Delete Schedule
Report Identification Identification Line: <input type="text"/> 0 To <input type="text"/> 0 Identification Line String: <input type="text"/> End Line: <input type="text"/> 0 To <input type="text"/> 0 End Line String: <input type="text"/> Start Line No: <input type="text"/> 1 Identification Line No: <input type="text"/> 0 End Line After: <input type="text"/> 0 End Line Before: <input type="text"/> 0			
Apply Criteria <input type="checkbox"/> Remove Start Line <input type="checkbox"/> Remove End Line <input checked="" type="checkbox"/> Remove blank lines <input type="checkbox"/> Web Enable Report Type: <input type="text"/> Column AutoFit Content Fixed Column Width: <input type="text"/> Report Title Date Format: <input type="text"/> dd-mm-yyyy			
Report Criteria Font: <input type="text"/> Click to change Font <input type="checkbox"/> Separate bit and xls Report Title: <input type="text"/> <input type="checkbox"/> All reports in one folder Sample File: <input type="text"/> <input type="button" value="Browse"/> Storage Path: <input type="text"/> <input type="button" value="Browse"/> Special Path: <input type="text"/> <input type="button" value="Browse"/> Holds: <input type="text"/> 0			
<input type="button" value="Save"/> <input type="button" value="Close"/> <input type="button" value="Block Configuration"/> <input type="button" value="Copy Block Configuration"/>			

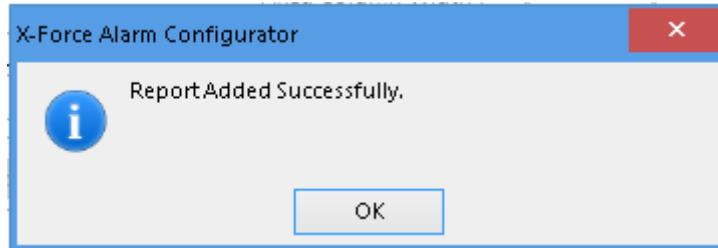
SR NO	FIELD NAME	DESCRIPTION
1	Identification Line	Method of the Identification Line like Start With, End With, Containing and Position Based. If it is Position Based then give starting and ending position

2	Identification Line String	The unique line from report which indicates the starting line
3	End Line	Same as Identification Line
4	End Line String	The string which indicated that this is the end of report
5	Start Line No	Line no from the report from which report should be generated
6	Identification Line No	Line no of the identification line
7	End Line After	How many lines should be in report after end line
8	End Line Before	How many lines should be in report before end line
9	Remove Start Line	Remove start line from report
10	Remove End Line	Remove end line from report
11	Remove Blank Lines	Remove blank line from report
12	Web Enable	Want to enable Web
13	Report Type	Type of report like TXT, XDF, XLS and HTML
14	Column AutoFit Content	Want to Auto fit or not
15	Fixed Column Width	If don't want to auto fit then width of the column
16	Report Title Date Format	Date format for the generated report
17	Font	Font for the report
18	Separate txt and xls	Want to generate txt and XLS file separately

19	Report Title	File name of the generated report
20	All reports in one folder	Want to generate report on Special path or not
21	Sample File	Capture file for the configured criteria
22	Storage Path	Path where to generate report
23	Special Path	Path where to generate report
24	Holds	No. of Copy of report which you want to keep in special folder.

Configuration	Mail Option	Print Option	Delete Schedule
Report Identification			
Identification Line: <input type="text" value="Containing"/> <input type="text" value="0"/> To <input type="text" value="0"/>			
Identification Line String: <input type="text" value="11/21 STREAM SHIFT LOGGING"/>			
End Line: <input type="text" value="Containing"/> <input type="text" value="0"/> To <input type="text" value="0"/>			
End Line String: <input type="text" value="11/21SHFT_IA"/>			
Start Line No: <input type="text" value="1"/>		Identification Line No: <input type="text" value="3"/>	
End Line After: <input type="text" value="0"/>		End Line Before: <input type="text" value="0"/>	
Apply Criteria			
<input type="checkbox"/> Remove Start Line <input type="checkbox"/> Remove End Line <input checked="" type="checkbox"/> Remove blank lines <input type="checkbox"/> Web Enable			
Report Type: <input type="text" value="XLSX"/> <input checked="" type="checkbox"/> Column AutoFit Content Fixed Column Width: <input type="text"/>			
Report Title Date Format: <input type="text" value="MM dd yyyy HH:mm:ss"/>			
Report Criteria			
Font: <input type="text" value="Click to change Font"/> <input type="checkbox"/> Separate bit and xls			
Report Title: <input type="text" value="SHIFT LOGGING"/> <input type="checkbox"/> All reports in one folder			
Sample File: <input type="text" value="E:\Developer\AIMS\Site Data\CAPROLACTUM_02082017\Ch00209-Jan-2018 1"/> <input type="button" value="Browse"/>			
Storage Path: <input type="text" value="E:\Developer\AIMS\Production Report\Storage Path"/> <input type="button" value="Browse"/>			
Special Path: <input type="text" value="E:\Developer\AIMS\Production Report\Special Path"/> <input type="button" value="Browse"/>			
Holds: <input type="text" value="0"/>			
<input type="button" value="Save"/> <input type="button" value="Close"/> <input type="button" value="Block Configuration"/> <input type="button" value="Copy Block Configuration"/>			

Do the report configuration and click on Save. It will display below message on successfully data stored.



Block Configuration

Double click on added/configured report and then click on Block Configuration. Below Block Configuration window will be displayed:

Report Block Configuration

Select the blocks you want to Configure :

Selection	Row No.	Data
<input type="checkbox"/>	1	SFT IA KRISHAK BHARATI COOPERATIVE LTD. DATE : 01-Jan-2018
<input type="checkbox"/>	2	UREA PLANT TIME : 13:06
<input type="checkbox"/>	3	11/21 STREAM SHIFT LOGGING
<input type="checkbox"/>	4	-----
<input type="checkbox"/>	5	S.NO TAG NO. DESCRIPTION UNIT 13:00
<input type="checkbox"/>	6	HRS
<input type="checkbox"/>	7	-----
<input type="checkbox"/>	8	1 11FR1 CO2 FLOW TO R-1 NM3/HR 27107.73
<input type="checkbox"/>	9	2 11DT12 R-1 SKIN TEMP DEGC 170.79
<input type="checkbox"/>	10	3 11DT13 R-1 TOP TEMP DEGC 189.43
<input type="checkbox"/>	11	4 11DT18 E-1 TOP DEGC 189.37
<input type="checkbox"/>	12	5 11DT18 E-1 BOTTOM DEGC 189.37

Block ID: Start: End:

Select Blocks :

Block ID	Start	End	Status

In the very upper grid, you can see the report as per configuration done. Now the block configuration role comes in existence. Do the block description as per requirement.

For Example: If you want to make block of 1st line then check the first checkbox and then click on Add Block.

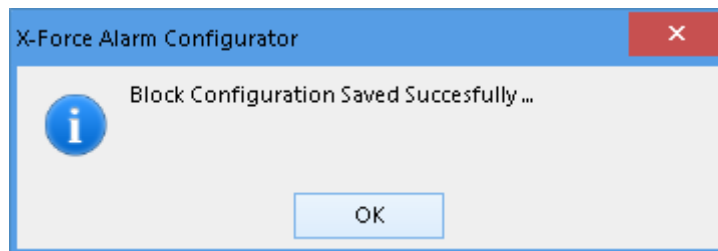
Report Block Configuration

Select the blocks you want to Configure:

Selection	Row No.	Data
<input checked="" type="checkbox"/>	1	SFT IA KRISHAK BHARATI COOPERATIVE LTD. DATE : 01-Jan-2018
<input type="checkbox"/>	2	UREA PLANT TIME : 13:06
<input type="checkbox"/>	3	11/21 STREAM SHIFT LOGGING
<input type="checkbox"/>	4	-----+-----
<input type="checkbox"/>	5	S.NO TAG NO. DESCRIPTION UNIT 13:00
<input type="checkbox"/>	6	HRS
<input type="checkbox"/>	7	-----+-----
<input type="checkbox"/>	8	1 11FR1 CO2 FLOW TO R-1 NM3/HR 27107.73
<input type="checkbox"/>	9	2 11DT12 R-1 SKIN TEMP DEGC 170.79
<input type="checkbox"/>	10	3 11DT13 R-1 TOP TEMP DEGC 189.43
<input type="checkbox"/>	11	4 11DT18 E-1 TOP DEGC 189.37
<input type="checkbox"/>	12	5 11DT19 E-1 BOTTOM DEGC 189.37

Block ID: Start: End:

Accordingly, you can add all blocks as per requirement. And then click on Save to save Block Configuration.



You can find the status of each block as Saved as shown below:

Report Block Configuration

Select the blocks you want to Configure :

Selection	Row No.	Data
<input type="checkbox"/>	1 - 2	SFT IA KRISHAK BHARATI COOPERATIVE LTD. DATE : 01-Jan-2018 UREA PLANT TIME :
<input type="checkbox"/>	3 - 3	11/21 STREAM SHIFT LOGGING
<input type="checkbox"/>	4 - 4	-----
<input type="checkbox"/>	5 - 5	S.NO TAG NO. DESCRIPTION UNIT 13:00
<input type="checkbox"/>	6 - 6	HRS
<input type="checkbox"/>	7 - 7	-----
<input type="checkbox"/>	8 - 25	1 11FR1 CO2 FLOW TO R-1 NM3/HR 27107.73 2 11DT12 R-1 SKIN TEMP DEGC 170.79 3 11DT13 R-1 TOP TEMP DEGC 189.43 4 11DT18 E-1 TOP DEGC 189.37 5 11DT19 E-1 BOTTOM DEGC 203.23 6 11DT31 C-1 BOTTOM DEGC 83.22 7 11DT135 C-1 TOP DEGC 43.47 8 11DT124 K-1 1ST STG. SUC. DEGC 35.17 9 11DT138 NH3 TO V-1 DEGC 31.01 10 11SIC31 P-1 A SPEED RPM

Block ID: Start: End:

Select Blocks:

Block ID	Start	End	Status
3	1	2	Saved
4	3	3	Saved
5	4	4	Saved
6	5	5	Saved
7	6	6	Saved
8	7	7	Saved
9	8	25	Saved

You can Edit or Delete the configured block by selecting that block as shown below:

Block ID	Start	End	Status
3	1	2	Saved
4	3	3	Saved
5	4	4	Saved
6	5	5	Saved
7	6	6	Saved
8	7	7	Saved
9	8	25	Saved

Block Formatting

Column Configuration

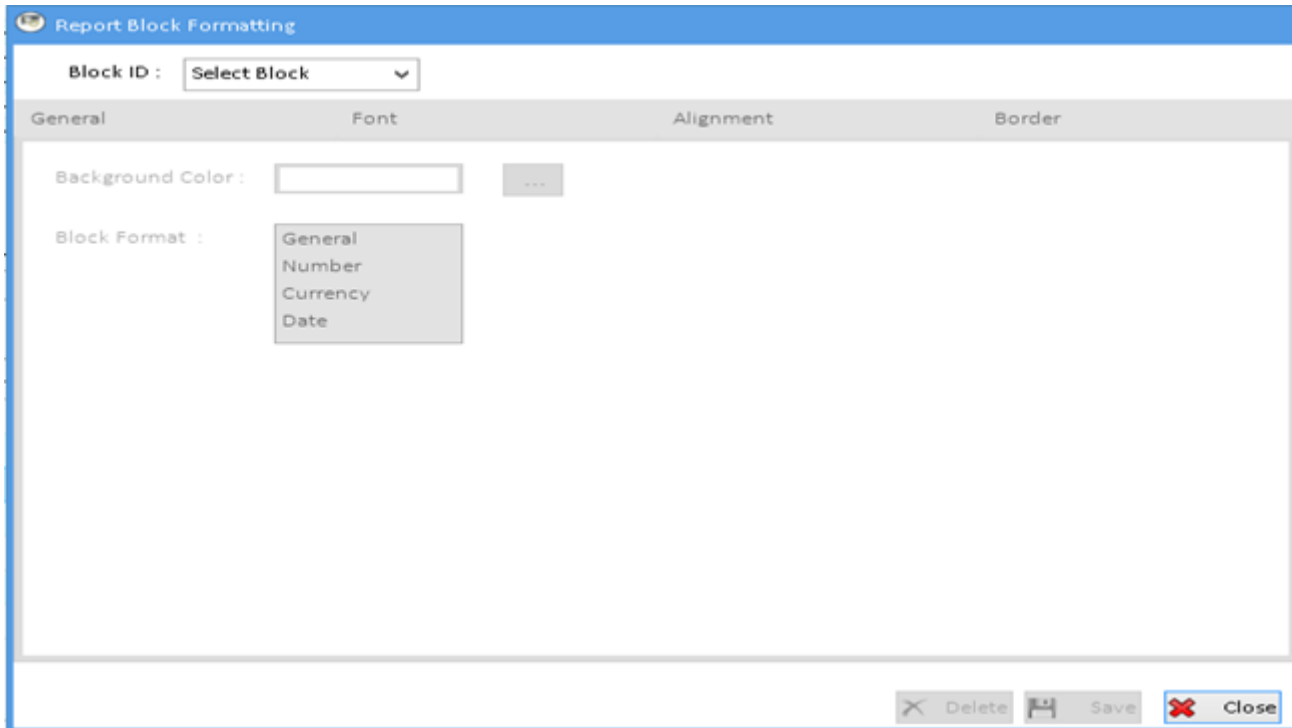
EditDeleteSaveClose

Block Formatting

Click on Block Formatting button to do block formatting configuration as shown below:



You will get below screen on clicking on Block Formatting button:



The image shows a software window titled "Report Block Formatting". At the top, there is a "Block ID :" label followed by a dropdown menu currently showing "Select Block". Below this is a tabbed interface with four tabs: "General", "Font", "Alignment", and "Border". The "General" tab is active. Inside the "General" tab, there is a "Background Color :" label with a text input field and a small square color selection button to its right. Below that is a "Block Format :" label with a list box containing four options: "General", "Number", "Currency", and "Date". At the bottom right of the window, there are three buttons: "Delete" (with a trash icon), "Save" (with a floppy disk icon), and "Close" (with a red X icon).

Select block from Block ID dropdown and do the configuration as required and then click on save button.


Report Block Formatting

Block ID : 3

General Font Alignment Border

Background Color : -1055773 ...

Block Format :
General
Number
Currency
Date

 Report Block Formatting

Block ID :

General

Font

Alignment

Border

Font Name :

Font Size :

Font Color :

Font Style

Preview


☒ Bold

☐ Italic

☐ Underline

☐ Strike Through

AIMS

 Report Block Formatting


Block ID : 3

GeneralFontAlignmentBorder

Horizontal : Center

Vertical : Middle

☐ Wrap Text



Report Block Formatting

Block ID :

General Font Alignment **Border**

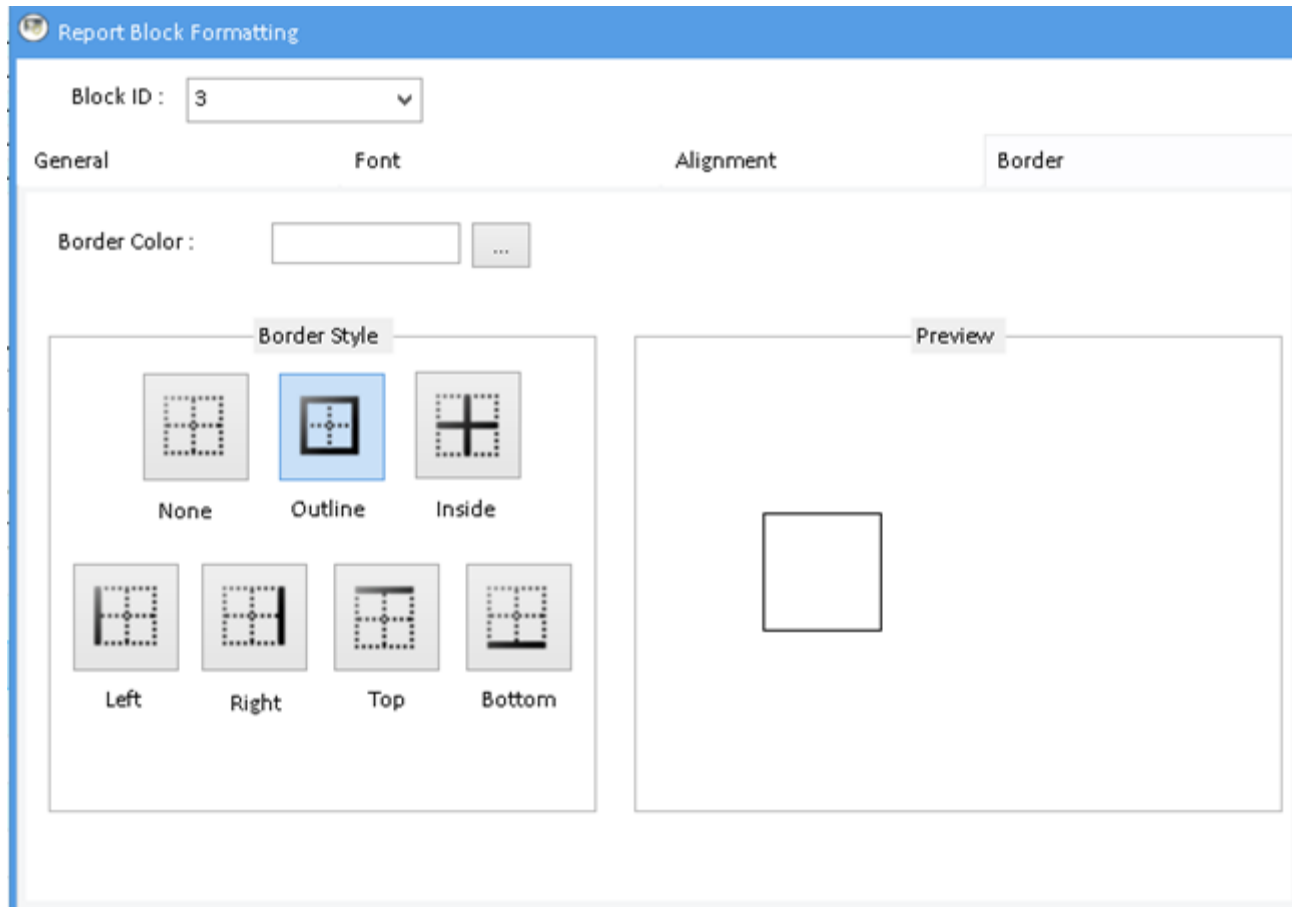
Border Color : ...

Border Style

☐ None ☒ Outline ☐ Inside

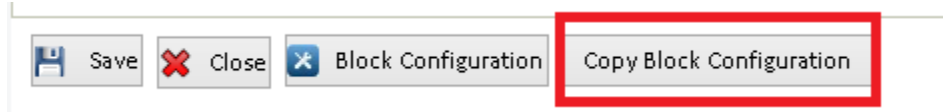
☐ Left ☐ Right ☐ Top ☐ Bottom

Preview

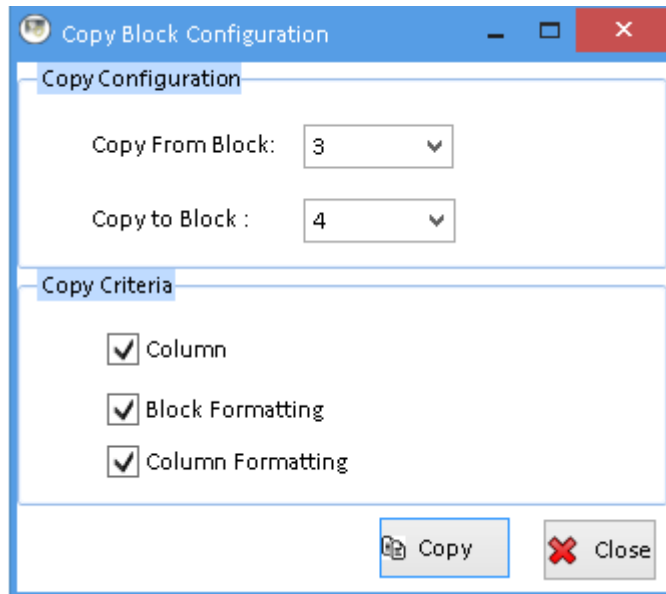


Copy Block Configuration

Copy block configuration is used to copy block configuration of one block to another. Click on Copy Block Configuration button



Below screen will be displayed after clicking on Copy Block Configuration button:



SR NO	FIELD NAME	DESCRIPTION
1	Copy From Block	From which you want to copy configuration
2	Copy to Block	To which block you want to copy configuration
3	Column	Want to copy Column Configuration or not

4	Block Formatting	Want to copy Block Formatting or not
5	Column Formatting	Want to copy Column Formatting or not

Column Configuration

In production report configuration, column configuration is used to decide which part of block will be in which excel cell. Click on Column Configuration button for the Column Configuration as shown below screenshot:

Report Block Configuration

Select the blocks you want to Configure :

Selection	Row No.	Data
<input type="checkbox"/>	1 - 2	SFT IA KRISHAK BHARATI COOPERATIVE LTD. DATE : 01-Jan-2018 UREA PLANT TIME :
<input type="checkbox"/>	3 - 3	11/21 STREAM SHIFT LOGGING
<input type="checkbox"/>	4 - 4	
<input type="checkbox"/>	5 - 5	S.NO TAG NO. DESCRIPTION UNIT 13:00
<input type="checkbox"/>	6 - 6	HRS
<input type="checkbox"/>	7 - 7	
<input type="checkbox"/>	8 - 8	1 11FR1 CO2 FLOW TO R-1 NM3/HR 27107.73 2 11DT12 R-1 SKIN TEMP DEGC
<input type="checkbox"/>	9 - 9	170.79 3 11DT13 R-1 TOP TEMP DEGC 189.43 4 11DT18 E-1 TOP DEGC
<input type="checkbox"/>	10 - 10	189.37 5 11DT19 E-1 BOTTOM DEGC 203.23 6 11DT131 C-1 BOTTOM DEGC
<input type="checkbox"/>	11 - 11	83.22 7 11DT135 C-1 TOP DEGC 43.47 8 11DT124 K-1 1ST STG. SUC. DEGC
<input type="checkbox"/>	12 - 12	35.17 9 11DT138 NH3 TO V-1 DEGC 31.01 10 11SIC31 P-1 A SPEED RPM

Block ID: 10 Start: End: Add Block

Select Blocks:

Block ID	Start	End	Status
3	1	2	Saved
4	3	3	Saved
5	4	4	Saved
6	5	5	Saved
7	6	6	Saved
8	7	7	Saved
9	8	25	Saved

Block Formatting Column Configuration

Edit Delete Save Close

You will get below screen by clicking on Column Configuration button:

Report Column Configuration

Block ID : Select Block Load Block

No data to display

Column No. :

Start :

End :

Excel Column : A TO A

Column Formatting Add Column

Selected Column

ColumnId	Start	End	Name	Status
----------	-------	-----	------	--------

Edit Delete Save Close

Now select Block from Block ID dropdown and click on Load Block button.

Report Column Configuration

Block ID :

A	B	C	D	E	F	G	H	I	J	K	L	M	N	O	P	Q	R	S
S	F	T			I	A												

Column No. :

Start :

End :

Excel Column : TO

Selected Column

ColumnId	Start	End	Name	Status
----------	-------	-----	------	--------

Now click on two cell and then click on Add Column with the configuration of Excel Column as shown below:

Report Column Configuration

Block ID :

A	B	C	D	E	F	G	H	I	J	K	L	M	N	O	P	Q	R	S
S	F	T			I	A												

Click on this for selection of first cell

Click on this for selection of second cell

Column No. :

Start :

End :

Excel Column : TO

Selected Column

ColumnId	Start	End	Name	Status
----------	-------	-----	------	--------

By clicking on Add Column it will be added to grid with Status New.

Report Column Configuration

Block ID :

A	B-G	H	I	J	K	L	M	N	O	P	Q	R	S	T	U	V
SFT IA																K

Column No. :

Start :

End :

Excel Column : TO





Selected Column

ColumnId	Start	End	Name	Status
1	2	7	A:C	New

By clicking on save button the status will be changed to Saved.

Selected Column





ColumnId	Start	End	Name	Status
1	2	7	A:C	Saved

 Edit  Delete  Save  Close

Accordingly, you can configure other columns as shown below:

Selected Column

ColumnId	Start	End	Name	Status
1	2	7	A:C	Saved
2	21	55	D:L	Saved
3	57	64	M:N	Saved
4	65	77	O:Q	Saved

 Edit  Delete  Save  Close

Column Formatting

Click on Column Formatting button to do block formatting configuration as shown below:

Column No. :

Start :

End :

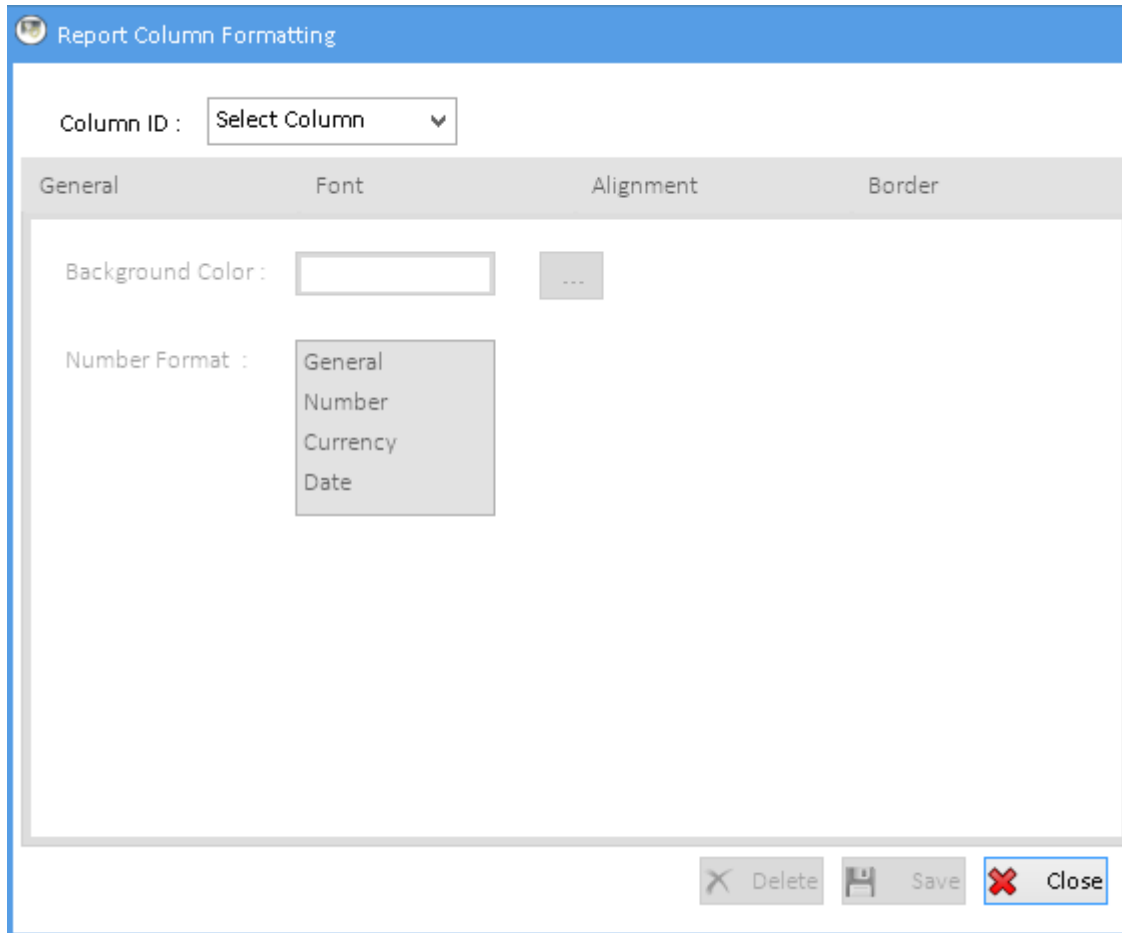
Excel Column : TO

Column Formatting

Selected Column

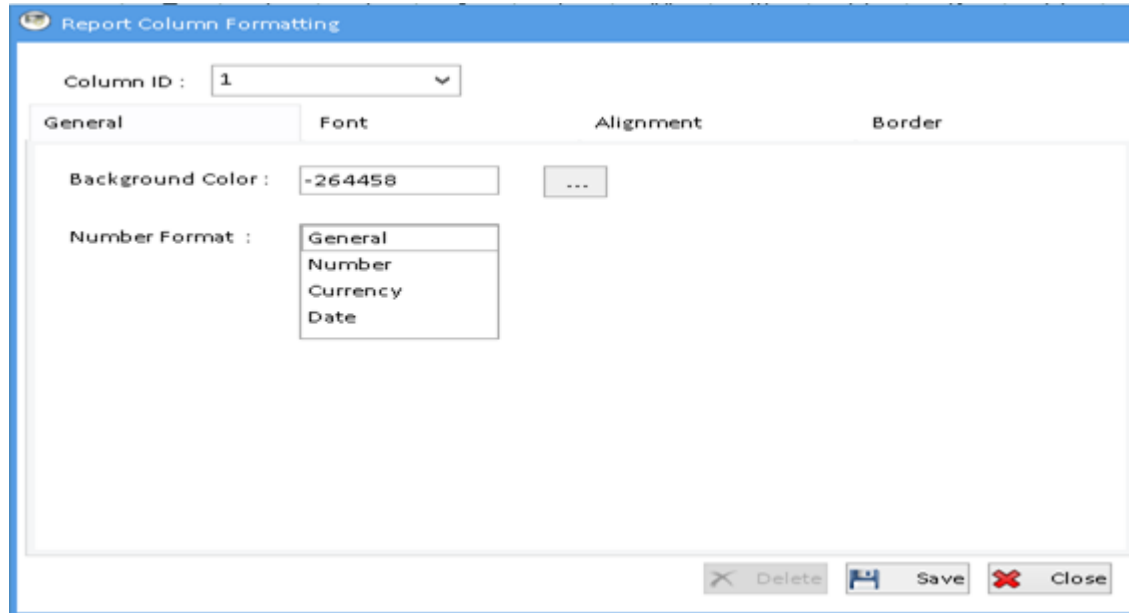
ColumnId	Start	End	Name	Status
1	2	7	A:C	Saved
2	21	55	D:L	Saved
3	57	64	M:N	Saved
4	65	77	O:Q	Saved

You will get below screen on clicking on Column Formatting button:



The dialog box is titled "Report Column Formatting" and features a blue header bar. Below the header, there is a "Column ID" label followed by a dropdown menu currently showing "Select Column". The main area of the dialog is divided into four tabs: "General", "Font", "Alignment", and "Border". The "General" tab is active, displaying a "Background Color" section with a white color box and a color selection icon (three dots). Below this is a "Number Format" section with a dropdown menu showing four options: "General", "Number", "Currency", and "Date". At the bottom of the dialog, there are three buttons: "Delete" (with a trash icon), "Save" (with a floppy disk icon), and "Close" (with a red X icon).

Select column from Column ID dropdown and do the configuration as required and then click on save button.

The image shows a 'Report Column Formatting' dialog box. At the top, there is a title bar with a small icon and the text 'Report Column Formatting'. Below the title bar, there is a 'Column ID' dropdown menu set to '1'. The main area of the dialog is divided into four tabs: 'General', 'Font', 'Alignment', and 'Border'. The 'General' tab is currently selected. Inside the 'General' tab, there are two settings: 'Background Color' with a text box containing '-264458' and a color selection button (three dots), and 'Number Format' with a dropdown menu showing 'General', 'Number', 'Currency', and 'Date'. At the bottom of the dialog, there are three buttons: 'Delete' (with a trash icon), 'Save' (with a floppy disk icon), and 'Close' (with a red X icon).

Report Column Formatting

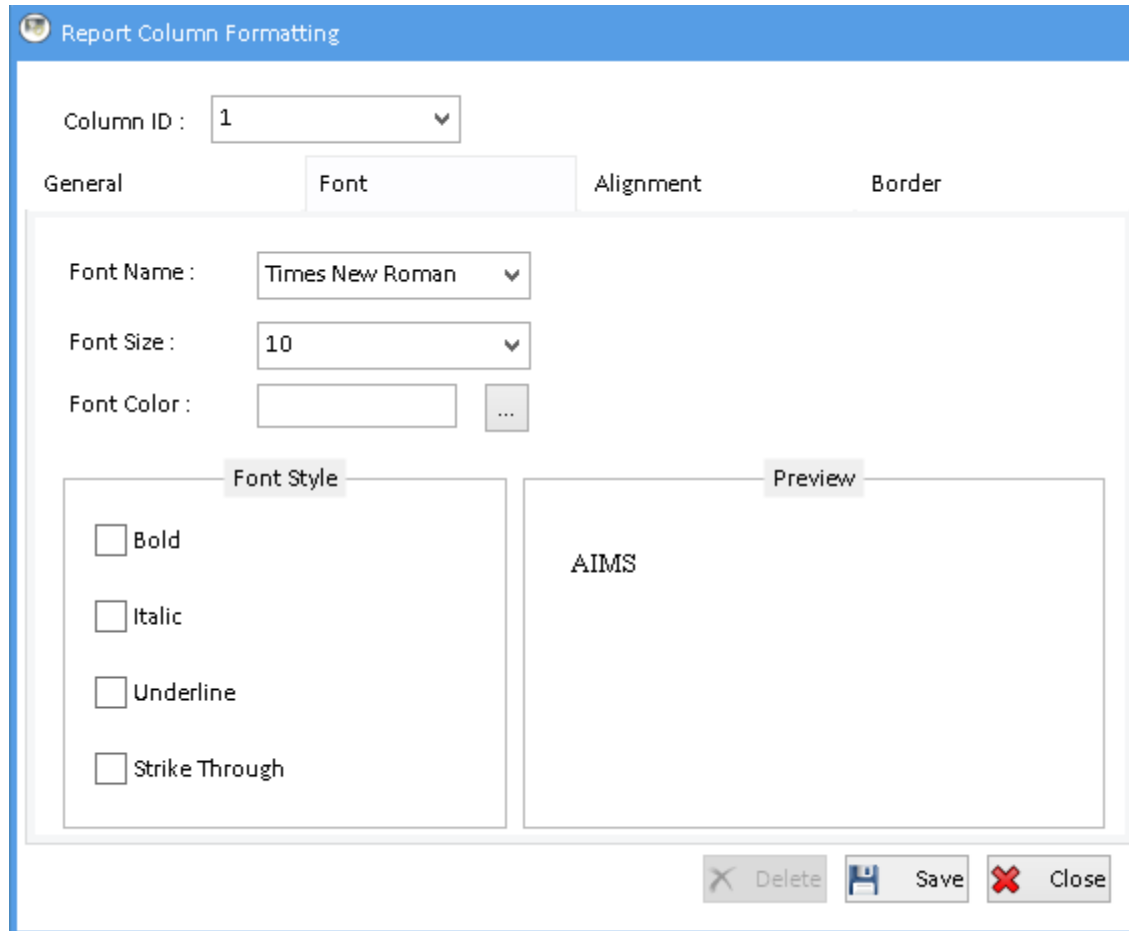
Column ID : 1

General Font Alignment Border

Background Color : -264458 ...

Number Format :
General
Number
Currency
Date

Delete Save Close



The dialog box is titled "Report Column Formatting" and features a blue header bar. Below the header, there is a "Column ID" dropdown menu set to "1". Four tabs are visible: "General", "Font" (which is selected), "Alignment", and "Border". The "Font" tab contains three settings: "Font Name" (set to "Times New Roman"), "Font Size" (set to "10"), and "Font Color" (with a color picker icon). Below these are four checkboxes for font styles: "Bold", "Italic", "Underline", and "Strike Through", all of which are currently unchecked. To the right of these checkboxes is a "Preview" area displaying the text "AIMS" in the selected font and size. At the bottom of the dialog are three buttons: "Delete" (with a trash icon), "Save" (with a floppy disk icon), and "Close" (with a red X icon).

Report Column Formatting

Column ID : 1

General Font Alignment Border

Font Name : Times New Roman

Font Size : 10

Font Color : ...

Font Style

☐ Bold

☐ Italic

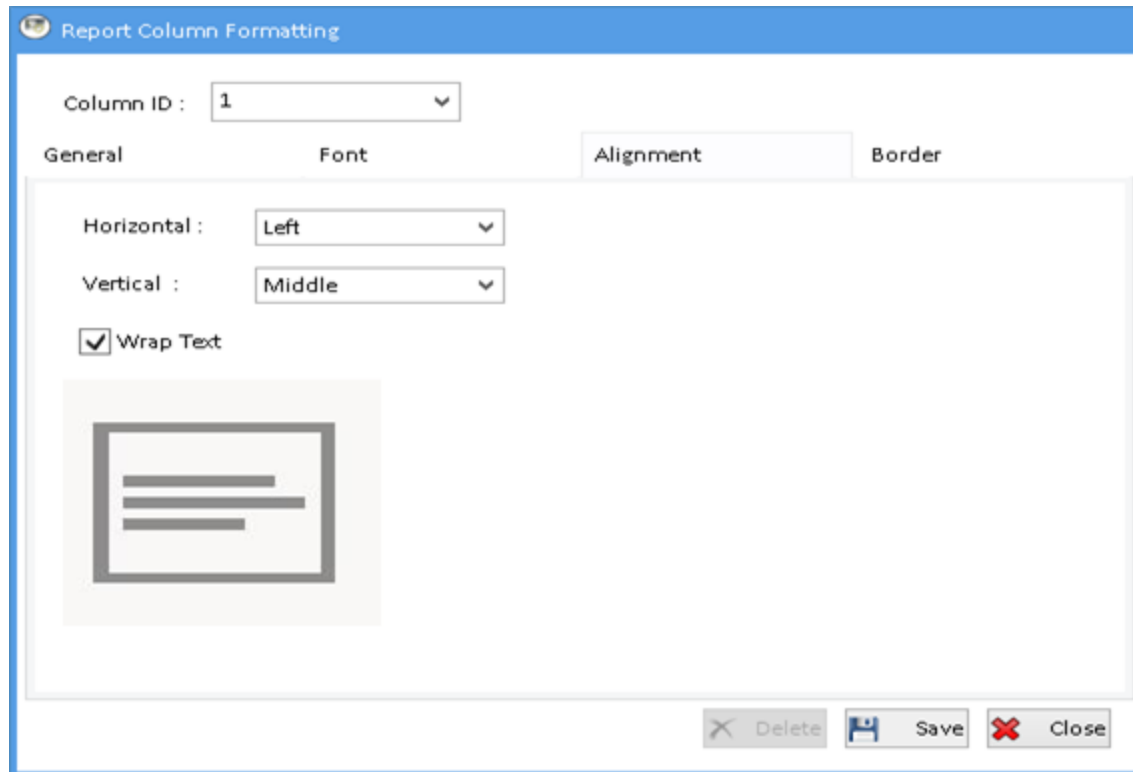
☐ Underline

☐ Strike Through

Preview

AIMS

Delete Save Close



The dialog box is titled "Report Column Formatting" and features a blue header bar. Below the header, there is a "Column ID" dropdown menu set to "1". Four tabs are visible: "General", "Font", "Alignment", and "Border". The "Alignment" tab is currently selected. Under this tab, there are two dropdown menus: "Horizontal" set to "Left" and "Vertical" set to "Middle". A "Wrap Text" checkbox is checked. A preview window shows a rectangular box containing three horizontal lines of text. At the bottom right, there are three buttons: "Delete" (with a trash icon), "Save" (with a floppy disk icon), and "Close" (with a red X icon).

Report Column Formatting


Column ID : 1

General Font Alignment Border

Horizontal : Left

Vertical : Middle

☒ Wrap Text



Delete Save Close

Report Column Formatting

Column ID : 1

General Font Alignment Border

Border Color : -9517356

☒ Column AutoFit Content Fixed Column Width :

Border Style

None Outline Inside

Left Right Top Bottom

Preview

Delete Save Close

Mail Option

You can do Mail Configuration for the Report.

Configuration

Mail Option

Print Option

Delete Schedule

☒ Report Mailer Enable ☐ Save Copy To SendBox ☐ Attach Text File

Mail To :

Multiple Email Address should be separated by semicolon

Mail Type :

Server Address :

Mail From :

Mail CC :

Mail Bcc :

Subject :

Body :

Save

Close

Block Configuration

Copy Block Configuration

SR NO	FIELD NAME	DESCRIPTION
1	Report Mailer Enable	Want to do mail or not

2	Save Copy To SendBox	Want to save mail in send item
3	Attach Text File	Want to attach text file in mail
4	Mail To	Mail IDS to whom mail should be sent. You can add multiple mail IDs separated by semicolon
5	Mail Type	Type of Mail like Outlook and SMTP
6	Server Address	SMTP Server address if the Mail Type is SMTP
7	Mail From	Mail ID from which mail should be sent
8	Mail CC	Mail IDs for CC
9	Mail BCC	Mail IDs for BCC
10	Subject	Subject of the Mail
11	Body	Description / Reason to send mail

Print Option

You can do Print Configuration for the Report.

Configuration
Mail Option
Print Option
Delete Schedule

☒ Print This Report On Printer

Printer Name :

No. Of Copy :

☒ After Formatting

☐ Before Formatting

☐ IS Print Landscape

SR NO	FIELD NAME	DESCRIPTION
1	Print This Report On Printer	Want to print this report or not
2	Printer Name	Select printer name
3	No. Of Copy	No. of copy to be printed
4	After Formatting	Want to print report after formatting or not
5	Before Formatting	Want to print report before formatting or not
6	IS Print Landscape	Want to print landscape or not

Delete Schedule

Delete schedule is used to remove generated reports from the generation path.

Configuration	Mail Option	Print Option	Delete Schedule
<input type="checkbox"/> Delete Report			
Duration : <input type="text" value="Select From Below"/> (In Months)			
Delete Date : <input type="text" value="Select From Below"/>			
Delete Report Older than Selected Date			

SR NO	FIELD NAME	DESCRIPTION
1	Delete Report	Want to delete report or not
2	Duration	How many old report you want to delete. For Example: If Duration is 5 then it will delete repots which are older than 5 month
3	Delete Date	Date of the month For Example: If Delete Date is 15 and Duration is 5 then it will delete reports which are 5 month older and creation date is before 15 of that month. If today is 7 th Jun 2018 then according to above example it will delete reports older than 15 th Dec 2017.