

X-Force Triconex Application

X-Force Triconex Utility will fetch the data from Triconex SOE file and Further this data will be used by x-Force Capture process to get this data on Alarm Management system.

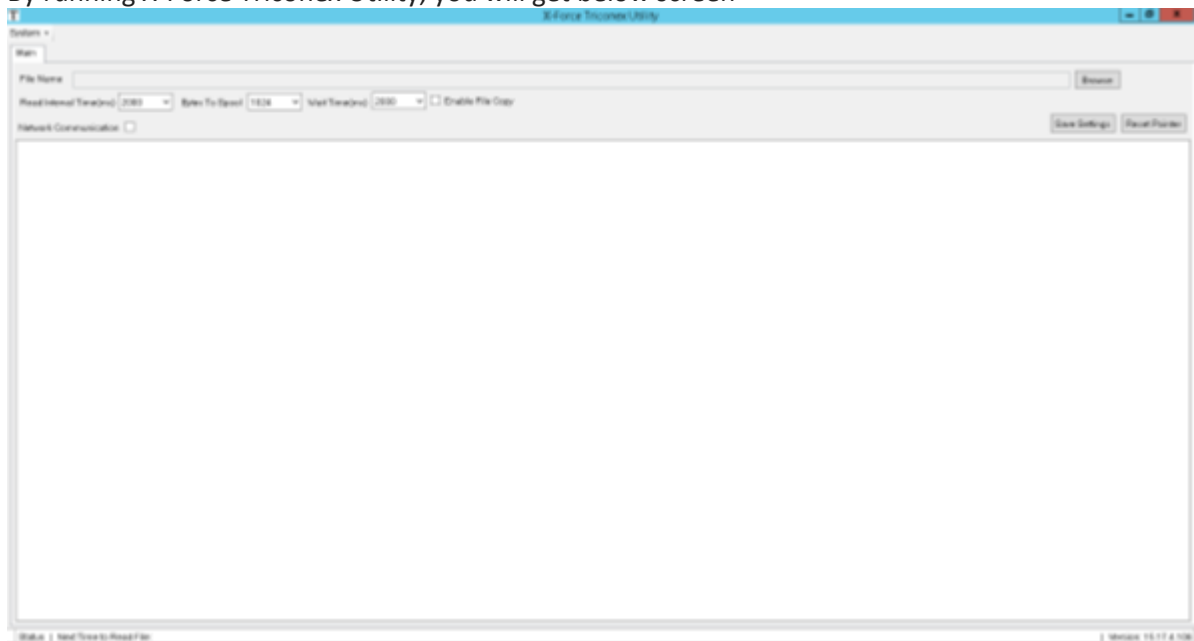
Pre-Requisite

Before starting configuration of X-Force Triconex, firstly we need to do major configuration.

- 1) Give Every One Rights to the folder where X-Force Triconex application is installed. if user does not give sufficient privilege to the directory then application will exit automatically.
- 2) User have to Keep License file Named "ssmxforce.lic" in the root folder where application is installed. if there is not license file in the root folder or license file is not valid or expired application should exit automatically.
- 3) If any configuration is saved previously then application should load that configuration

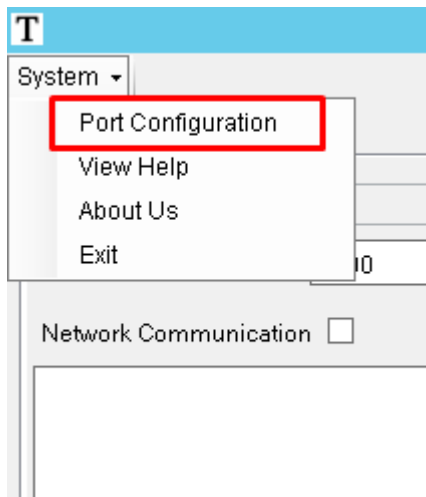
Configuration

By running X-Force Triconex Utility, you will get below screen



Port Configuration:

For Port Configuration in X-force Triconex utility Right Click on System Then Click Port Configuration.



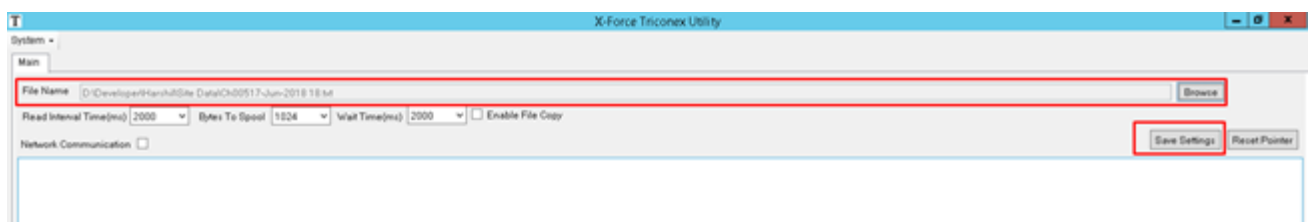
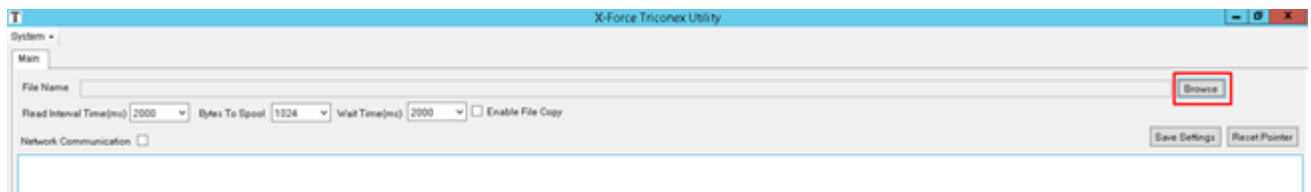
So port Configuration are loaded and add details as mention in below snap.

Port Configuration	
Port No	Output Buffer Size 1024
Speed 9600	Input Buffer Size 512
Parity None	SThreshold <input checked="" type="checkbox"/>
Databit 8	DTR <input checked="" type="checkbox"/>
Stopbit 1	RTS <input checked="" type="checkbox"/>
Flow Control None	EOF <input type="checkbox"/>
Parity Replace ?	Discard Null <input type="checkbox"/>
<input type="button" value="Save"/> <input type="button" value="Cancel"/>	

SR NO	FIELD NAME	DESCRIPTION
1	PortNo	Port no on which GSM modem is connected to send SMS.
2	Speed	The rate at which information is transferred in a communication
3	Parity	Parity bit in the communication
4	Data Bit	Two bytes are sent, each consisting of a start bit, followed by data bits

5	Stop Bit	Stop bits separate each unit of data on an asynchronous serial
6	Flow Control	The extra input and outputs used on the serial device to perform this type of handshaking.
7	Parity Replace	To replace the parity bit during Communication
8	Discard Null	Gets or sets a value indicating whether null bytes are ignored when transmitted between the port and the receive buffer
9	DTR Enable	To Enable the "Request To Send"
10	RTS Enable	DATA Terminal READY
11	Input Buffer Size	Size of the input buffer For sending data
12	Output Buffer Size	Size of the input buffer For Receiving data
13	Input Length	The Length of the data while Receiving
14	EOF Enable	To enable disable "END OF FILE"
15	SThreshold	Threshold Value for "Request To Send"
16	RThreshold	Threshold Value for "Request To Receive"

For Select SOE File Click on Browse button and select file and configure Read Interval Time, Byte to Spool, Wait Time, Enable File Copy and Network Communication and then click on Save Settings button.



SR NO	FIELD NAME	DESCRIPTION
1	Read Interval Time	Interval time to read data from txt file.
2	Byte To Spool	If you select 1024 byte then 1024 byte data are read from file.
3	Wait Time	Waiting time to send data.

4	Enable File Copy	For saving Copy of SOE txt File.
5	Network Communication	For Network Communication.
6	Reset Pointer	To reset txt file reading pointer.

To Exit the system, go to system menu and select Exit option.

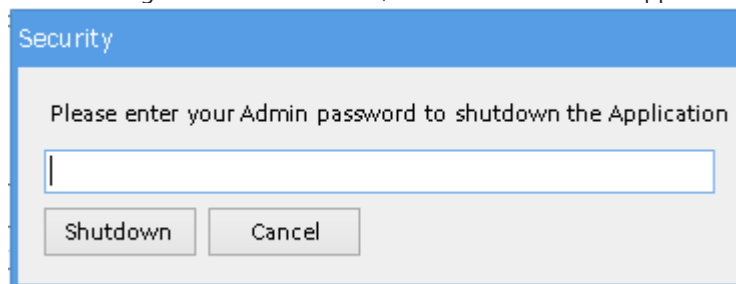
To open Help, go to Help menu and select View Help menu.

Select the triconex application icon in notification tray where below listed 4 options are available

SR NO	FIELD NAME	DESCRIPTION
1	Restore	Display the application in maximize form
2	Minimize	Display the application in minimize form
3	Shutdown	Exit / close the application
4	Cancel	Close the context menu

On click of Shut down, it will open form as mention in below image which will ask for AIMS system password.

After entering the correct Password, it will allow to exit the application.



If Wrong Password is entering, it will not allow to exit the application.