



X Force TRICONEX UTILITY

X-Force SOE/ Triconex software is used when we're dealing with Triconex or Quantam PLCs. These PLCs are known for very fast communication rate (e.g. 1ms). Capturing data from these devices with their correct time stamp without losing a single bit is a critical task which requires special configuration of X-Force SOE/ Triconex Utility.

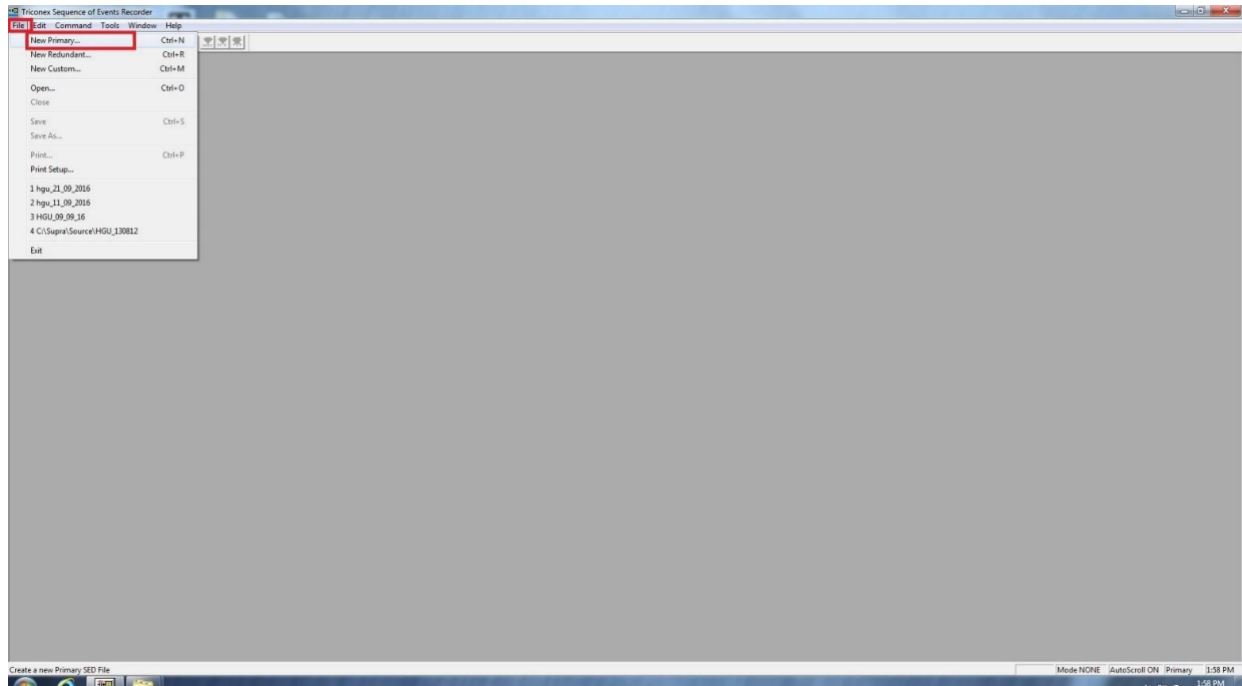
X-Force Triconex Utility is an industry software system for read file Journal.txt in SOE PC generated by Sequence of event software in a control room environment. This application send data to X-Force AIMS. And AIMS Software Analysis System to retrieve and analyze alarms and reports from anywhere on network more and more people are realizing that they can replace their noisy, paper hungry, unreliable, expensive printer and replace them with X-Force.

The software runs on standard desktop computer under Windows environment like Windows XP./window 7.

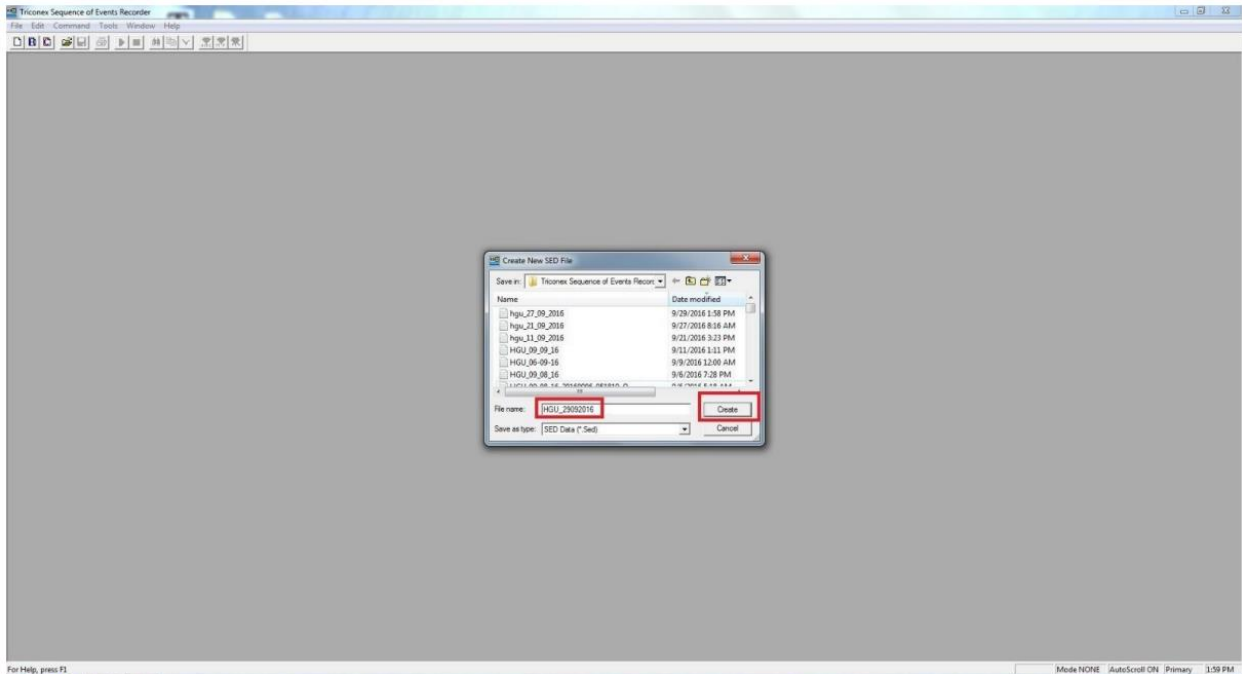
No changes are required to your existing control system to use X-Force, connecting in place of existing printer.

Procedure to create SOE journal file for X-force

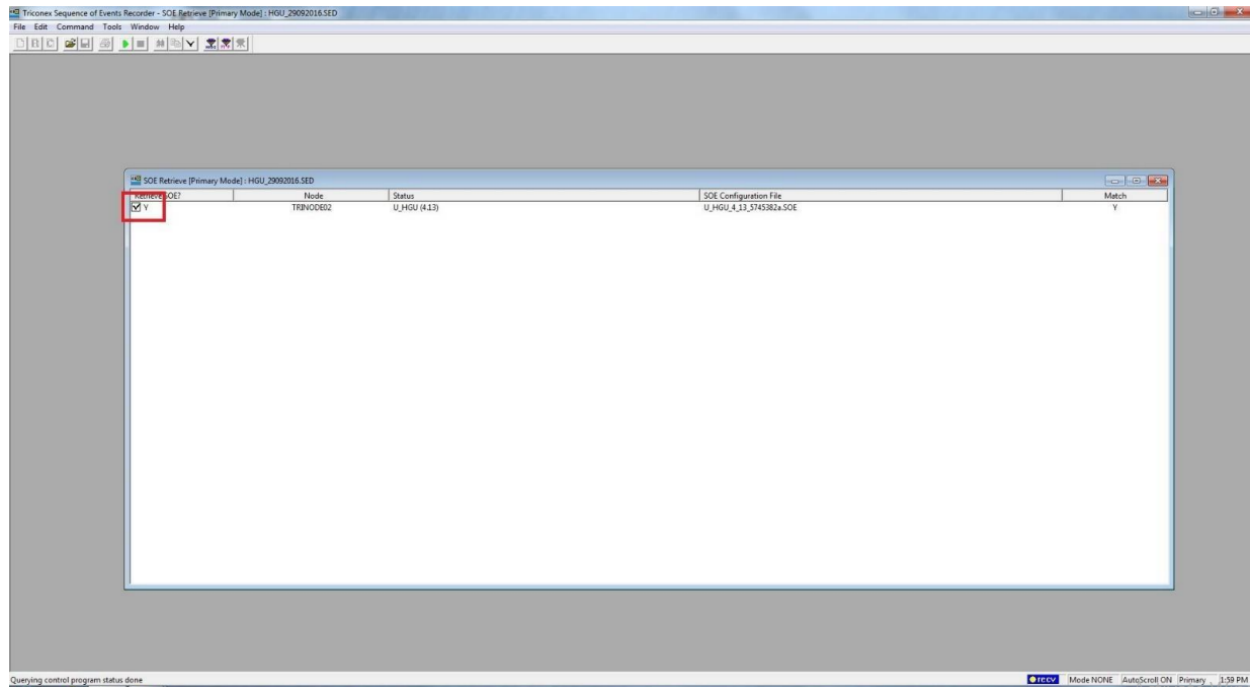
Create New Primary SED File. (First of all open **Triconex Recorder** – click on “File” Menu and select “NewPrimary”).



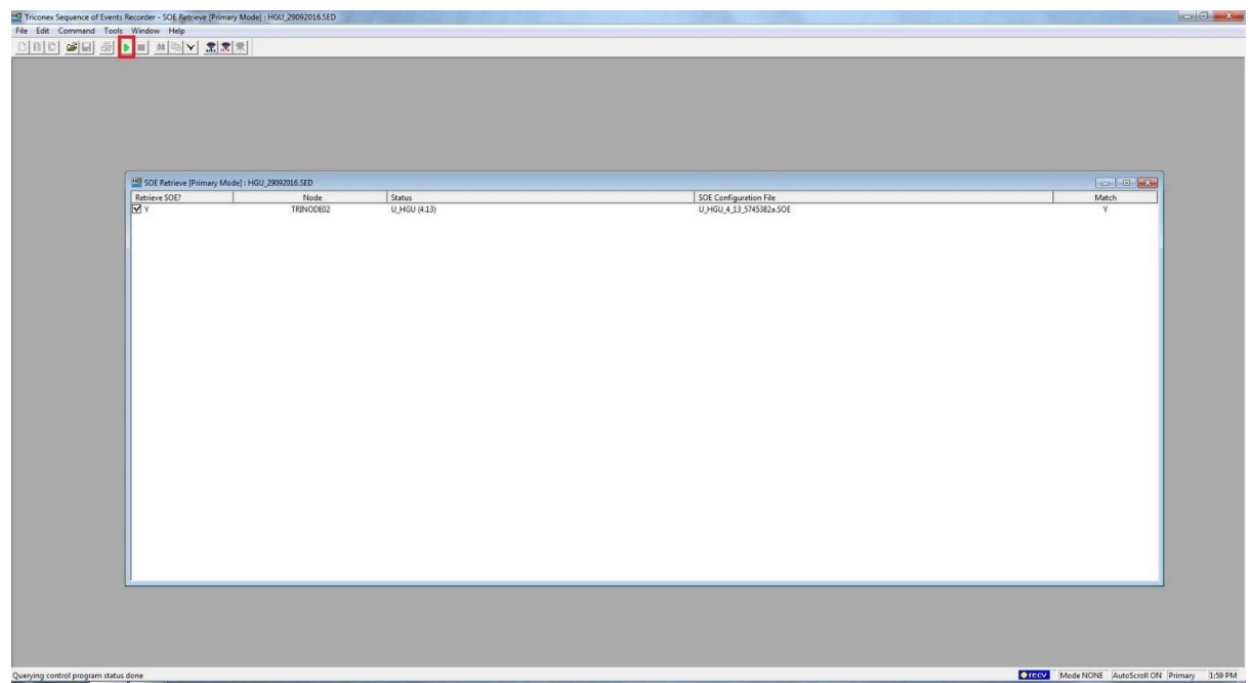
Give name for SED file and click on “Create” to continue



Enable Node.



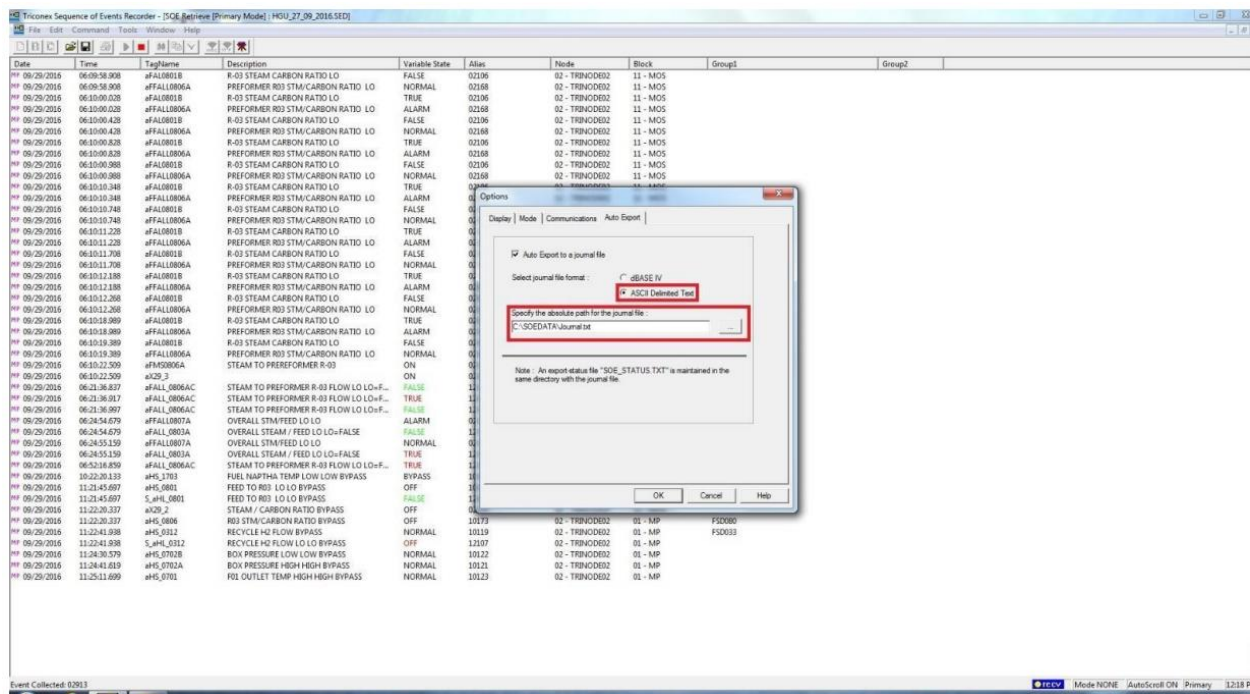
Start service.



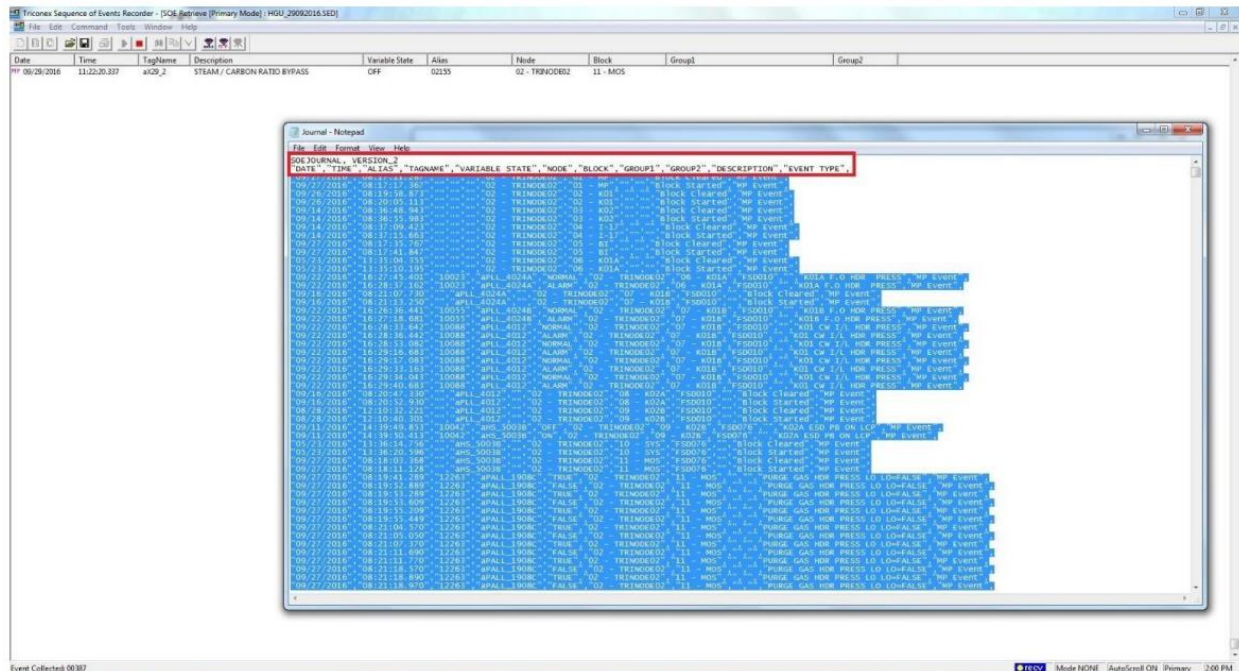
Date	Time	TstName	Description	Variable State	Alarm	Note	Block	Group1	Group2
08/29/2016	06:07:27.066	#FALL_08	PREFORMER R-03 STEAM CARBON RATIO LO	FALSE	C2168	02 - TRPN00002	11 - MDS		
08/29/2016	06:07:27.626	#FALL08I1	R-03 STEAM CARBON RATIO LO	FALSE	C2166	02 - TRPN00002	11 - MDS		
08/29/2016	06:07:27.626	#FALL_08	PREFORMER R-03 STEAM CARBON RATIO LO	NORMAL	C2168	02 - TRPN00002	11 - MDS		
08/29/2016	06:08:46.317	#FALL_08	R-01 STEAM CARBON RATIO LO	TRUE	C2166	02 - TRPN00002	11 - MDS		
08/29/2016	06:08:46.317	#FALL_08	PREFORMER R-03 STEAM CARBON RATIO LO	ALARM	C2168	02 - TRPN00002	11 - MDS		
08/29/2016	06:08:46.427	#FALL08I1	R-03 STEAM CARBON RATIO LO	FALSE	C2168	02 - TRPN00002	11 - MDS		
08/29/2016	06:08:46.427	#FALL_08	PREFORMER R-03 STEAM CARBON RATIO LO	NORMAL	C2168	02 - TRPN00002	11 - MDS		
08/29/2016	06:08:51.367	#FALL08I1	R-01 STEAM CARBON RATIO LO	TRUE	C2166	02 - TRPN00002	11 - MDS		
08/29/2016	06:08:51.367	#FALL_08	PREFORMER R-03 STEAM CARBON RATIO LO	ALARM	C2168	02 - TRPN00002	11 - MDS		
08/29/2016	06:09:54.817	#FALL08I1	R-03 STEAM CARBON RATIO LO	FALSE	C2166	02 - TRPN00002	11 - MDS		
08/29/2016	06:09:54.817	#FALL_08	PREFORMER R-03 STEAM CARBON RATIO LO	NORMAL	C2168	02 - TRPN00002	11 - MDS		
08/29/2016	06:09:55.388	#FALL08I1	R-03 STEAM CARBON RATIO LO	TRUE	C2166	02 - TRPN00002	11 - MDS		
08/29/2016	06:09:55.388	#FALL_08	PREFORMER R-03 STEAM CARBON RATIO LO	ALARM	C2168	02 - TRPN00002	11 - MDS		
08/29/2016	06:09:55.548	#FALL08I1	R-03 STEAM CARBON RATIO LO	FALSE	C2168	02 - TRPN00002	11 - MDS		
08/29/2016	06:09:55.548	#FALL_08	PREFORMER R-03 STEAM CARBON RATIO LO	NORMAL	C2166	02 - TRPN00002	11 - MDS		
08/29/2016	06:09:58.188	#FALL08I1	R-03 STEAM CARBON RATIO LO	TRUE	C2166	02 - TRPN00002	11 - MDS		
08/29/2016	06:09:58.188	#FALL_08	PREFORMER R-03 STEAM CARBON RATIO LO	ALARM	C2168	02 - TRPN00002	11 - MDS		
08/29/2016	06:09:58.908	#FALL08I1	R-03 STEAM CARBON RATIO LO	FALSE	C2166	02 - TRPN00002	11 - MDS		
08/29/2016	06:09:58.908	#FALL_08	PREFORMER R-03 STEAM CARBON RATIO LO	NORMAL	C2168	02 - TRPN00002	11 - MDS		
08/29/2016	06:10:00.028	#FALL08I1	R-03 STEAM CARBON RATIO LO	TRUE	C2166	02 - TRPN00002	11 - MDS		
08/29/2016	06:10:00.028	#FALL_08	PREFORMER R-03 STEAM CARBON RATIO LO	ALARM	C2168	02 - TRPN00002	11 - MDS		
08/29/2016	06:10:00.428	#FALL08I1	R-03 STEAM CARBON RATIO LO	FALSE	C2166	02 - TRPN00002	11 - MDS		
08/29/2016	06:10:00.428	#FALL_08	PREFORMER R-03 STEAM CARBON RATIO LO	NORMAL	C2168	02 - TRPN00002	11 - MDS		
08/29/2016	06:10:00.828	#FALL08I1	R-03 STEAM CARBON RATIO LO	TRUE	C2166	02 - TRPN00002	11 - MDS		
08/29/2016	06:10:00.828	#FALL_08	PREFORMER R-03 STEAM CARBON RATIO LO	ALARM	C2168	02 - TRPN00002	11 - MDS		
08/29/2016	06:10:06.988	#FALL08I1	R-03 STEAM CARBON RATIO LO	FALSE	C2168	02 - TRPN00002	11 - MDS		
08/29/2016	06:10:06.988	#FALL_08	PREFORMER R-03 STEAM CARBON RATIO LO	NORMAL	C2168	02 - TRPN00002	11 - MDS		
08/29/2016	06:10:10.348	#FALL08I1	R-03 STEAM CARBON RATIO LO	TRUE	C2166	02 - TRPN00002	11 - MDS		
08/29/2016	06:10:10.348	#FALL_08	PREFORMER R-03 STEAM CARBON RATIO LO	ALARM	C2168	02 - TRPN00002	11 - MDS		
08/29/2016	06:10:11.748	#FALL08I1	R-03 STEAM CARBON RATIO LO	FALSE	C2166	02 - TRPN00002	11 - MDS		
08/29/2016	06:10:11.748	#FALL_08	PREFORMER R-03 STEAM CARBON RATIO LO	NORMAL	C2168	02 - TRPN00002	11 - MDS		
08/29/2016	06:10:11.228	#FALL08I1	R-01 STEAM CARBON RATIO LO	TRUE	C2166	02 - TRPN00002	11 - MDS		
08/29/2016	06:10:11.228	#FALL_08	PREFORMER R-03 STEAM CARBON RATIO LO	ALARM	C2168	02 - TRPN00002	11 - MDS		
08/29/2016	06:10:11.798	#FALL08I1	R-03 STEAM CARBON RATIO LO	FALSE	C2166	02 - TRPN00002	11 - MDS		
08/29/2016	06:10:11.798	#FALL_08	PREFORMER R-03 STEAM CARBON RATIO LO	NORMAL	C2168	02 - TRPN00002	11 - M		

[illegible]

Select “ASCII delimited text” and set location for Journal text file. (Location: “C:\SOEDATA\Journal.txt”) click on “OK” to continue



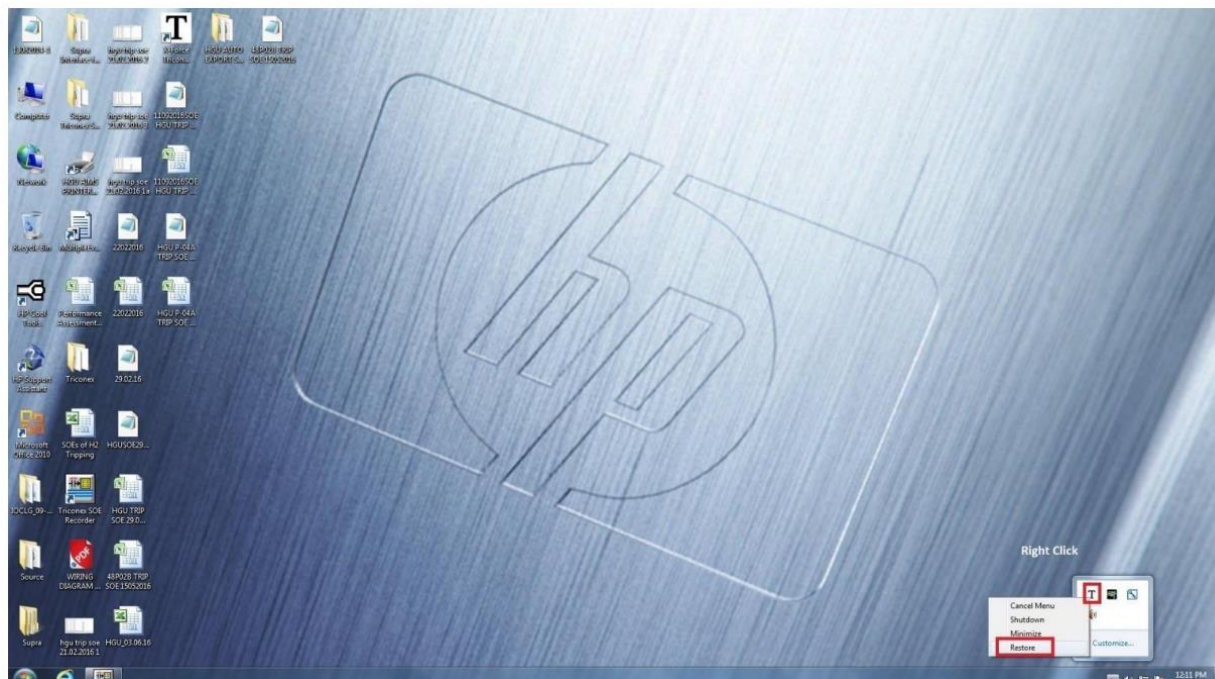
Now Journal text file is ready with alarms.



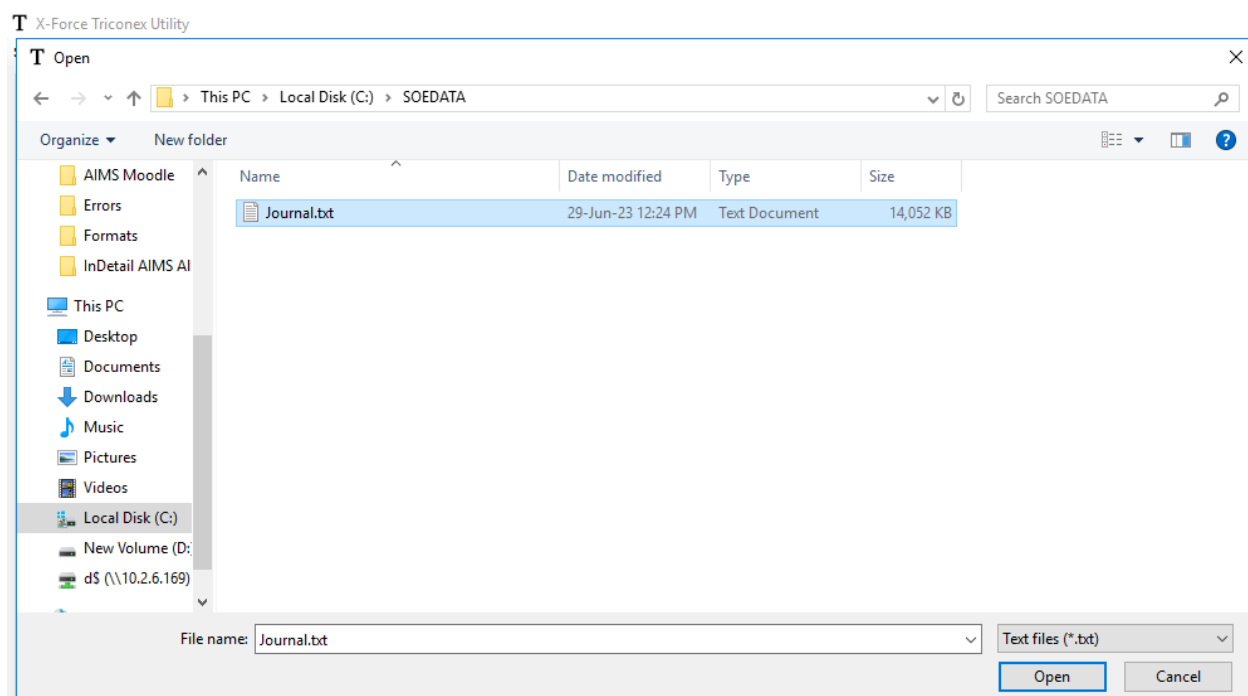
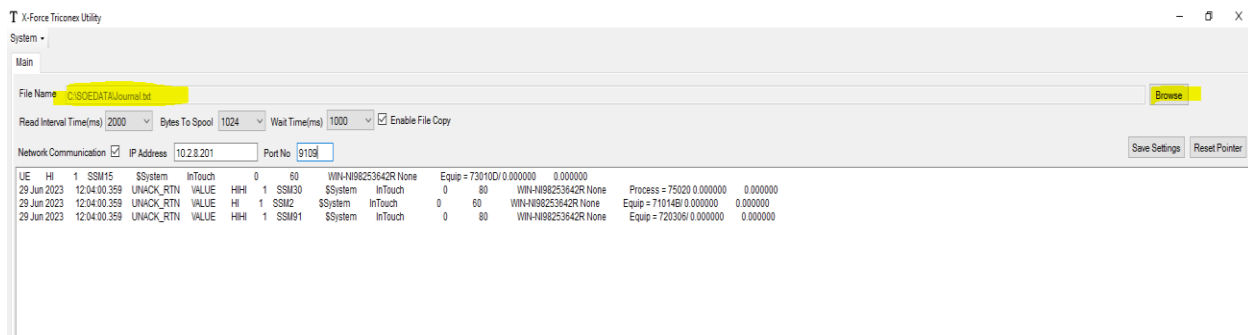
Start X-force SOE Triconex Utility



Restore X-force Triconex application



Browse Journal.Txt File (Location: “C:\SOEDATA\Journal.txt”)

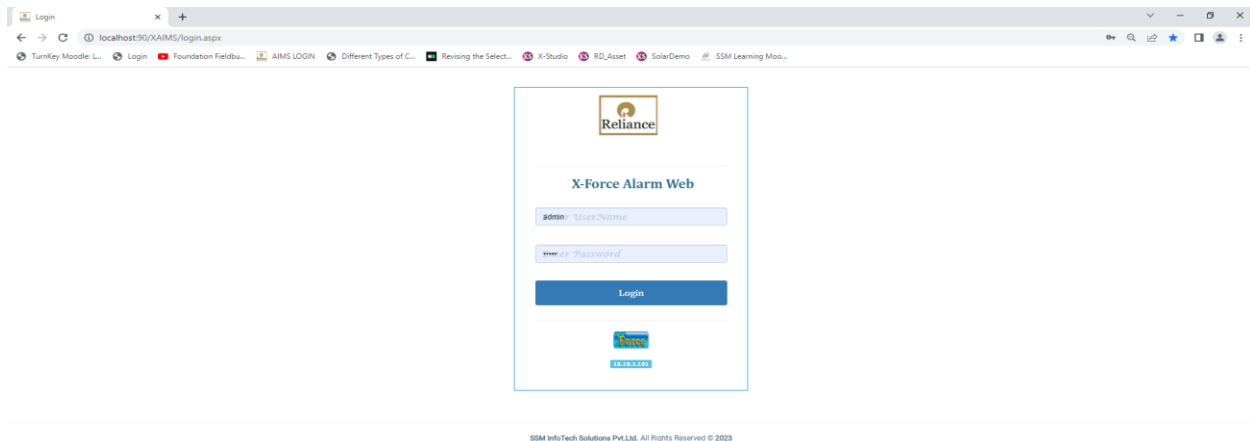


Click on Save Setting, X-force triconex application shutdown automatically so need to start X-force triconex utility again.

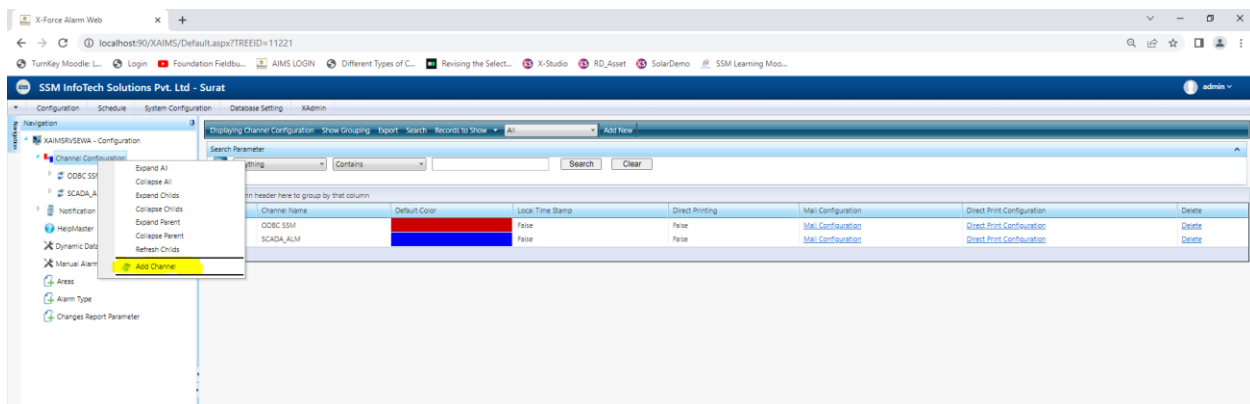
After that X-force Triconex Utility Will open in back end and send alarms to X-Force Alarm Management System.

At X-Force Alarm Management System, X-force Capture application capture alarms by and generates reports as per the Requirement.

To capture alarms form Triconex, First Create new Channel. In X-Force Alarm Web Configuration. Login with credential (User Name and Password)



Click on Configuration, Expand configuration click on channel configuration and right click on it and select **ADD channel**.



Add Details like communication type (Network Communication), Channel name, Plant Name, Set Default Color Then click on save

Add Channel : New record

Save Cancel

Communication Type : Network Communication

Channel Name : TRICONEX

Plant Name : SSM

Default Color :

AlarmTimeOut : 0

Priority File Processing : ☐

Enable Graphics Printing : ☐

Enable OPR bit Configuration : ☐

Enable SOE Configuration : ☐

Save Cancel

Ready

As Shown Below write local IP, Remote IP, Backup IP, Port No, Select Terminator 1 and 2, Set Minimum Length Data accordingly. And click on save.

Network Channel Configuration : New record

Save Cancel

Channel Name : triconex

Local IP Address : 10.2.8.201

Remote IP Address : 10.2.8.201

Backup IP Address : 10.2.8.201

PortNo : 9109

Terminator 1 : CRLF

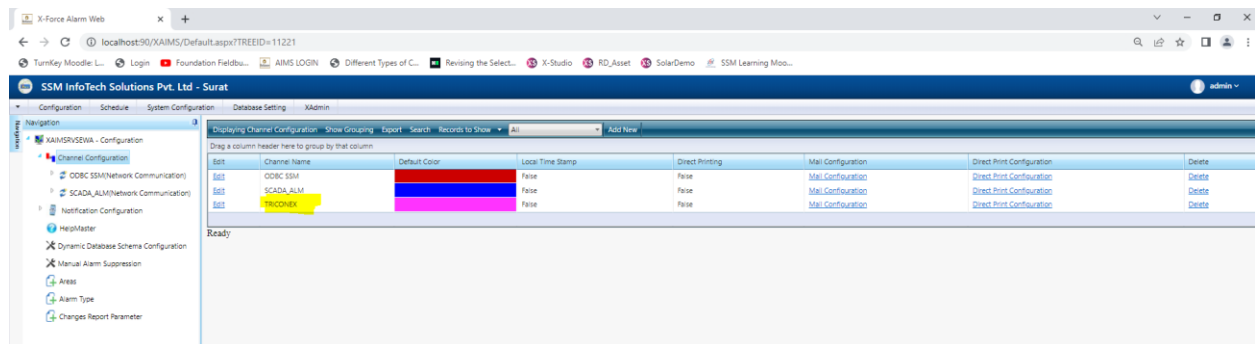
Terminator 2 : CRLF

Minimum Length : 20

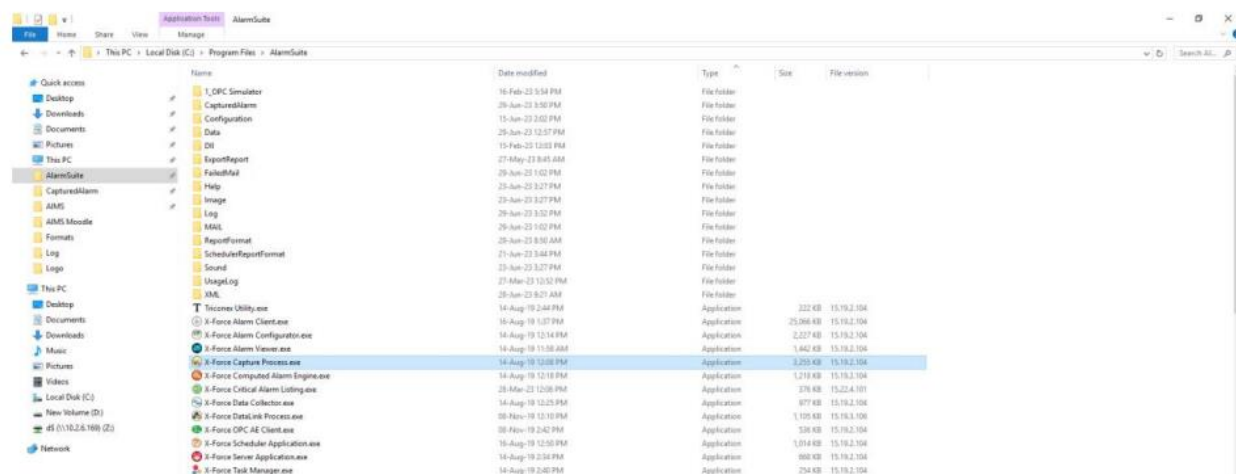
Save Cancel

Please configure Network Communication parameters to complete channel configuration,Saved sucessfully, continue editing

Channel is Appear here as shown below.



Now Open the X Force Capture Process and Restore it.



Select Channel Triconex and Check alarms and Events coming or not.

