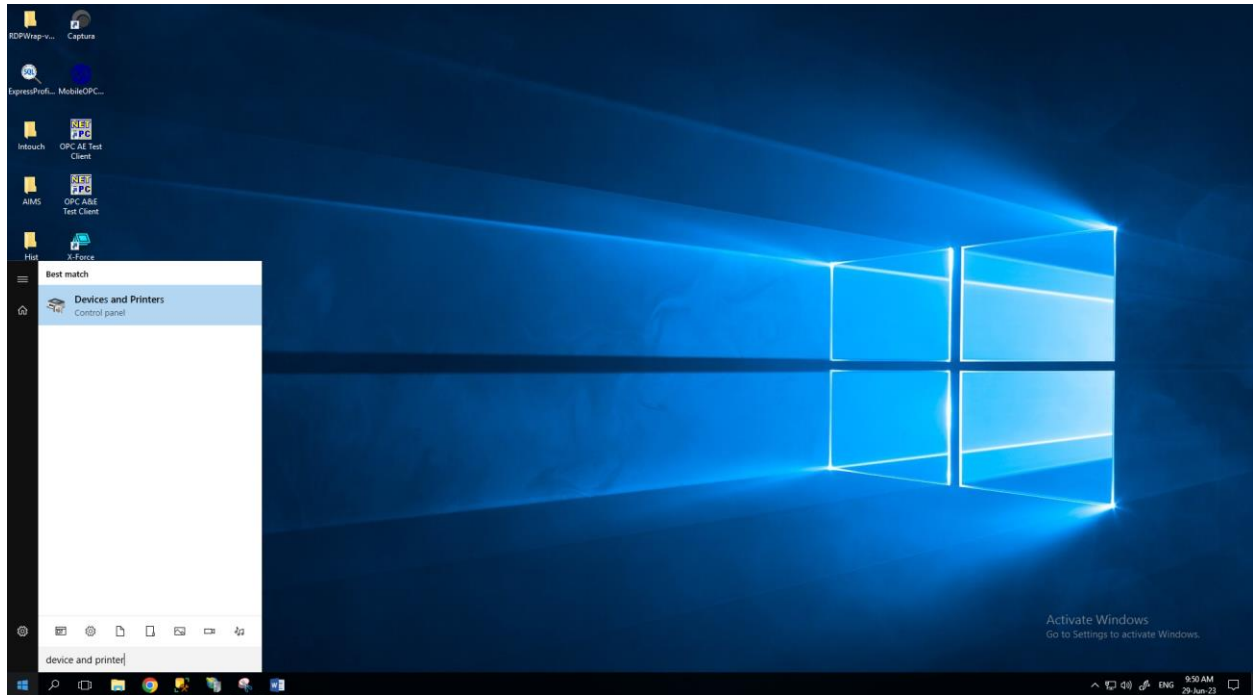
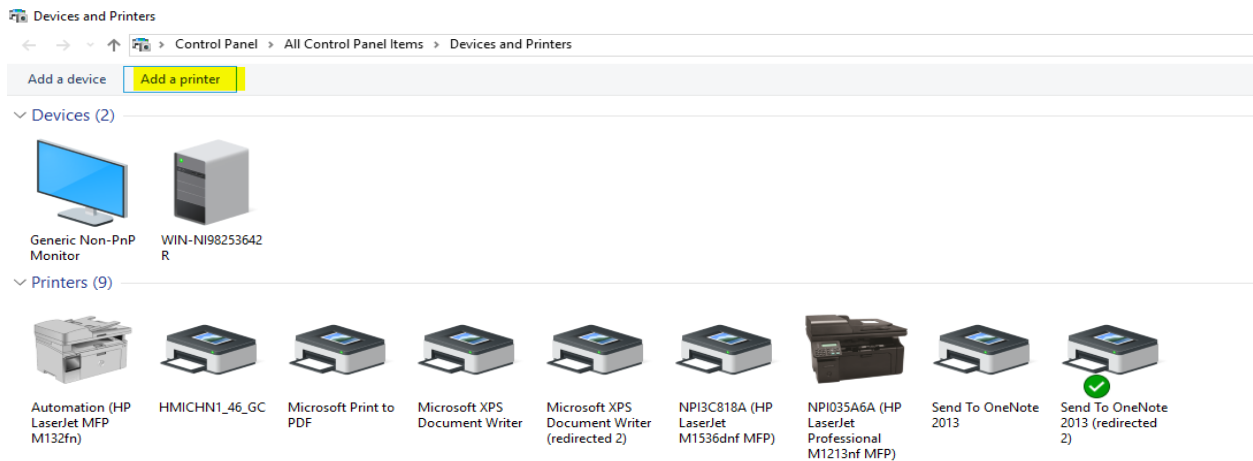


VIRTUAL PRINTER


Search, Write Device and Printers, **Click on Devices and Printers.**



Click on Add a printer




Click on The printer that I want isn't listed, As Shown below.

 Add a device

Choose a device or printer to add to this PC

Select a device


	NPI9603BB (HP LaserJet MFP M437-M443) Multi Function Printer
---	---

The printer that I want isn't listed

Next

Cancel

Select Add a printer using a TCP/IP address or hostname and Click on Next

←  Add Printer

Find a printer by other options

My printer is a little older. Help me find it.

Select a shared printer by name

Browse...

Example: \\computername\printername or
http://computername/printers/printername/.printer

Add a printer using a TCP/IP address or hostname

Add a Bluetooth, wireless or network discoverable printer

Add a local printer or network printer with manual settings

Next

Cancel

Write Hostname or IP Address where to print the alarm and Events from SCADA/DCS/PLC ,After that **Click on Next.**

←  Add Printer

Type a printer hostname or IP address


Device type:	Autodetect
Hostname or IP address:	10.2.8.201
Port name:	10.2.8.201_3

Query the printer and automatically select the driver to use

Next

Cancel

After Clicking on Next below Screen appear,

←  Add Printer

Detecting TCP/IP port

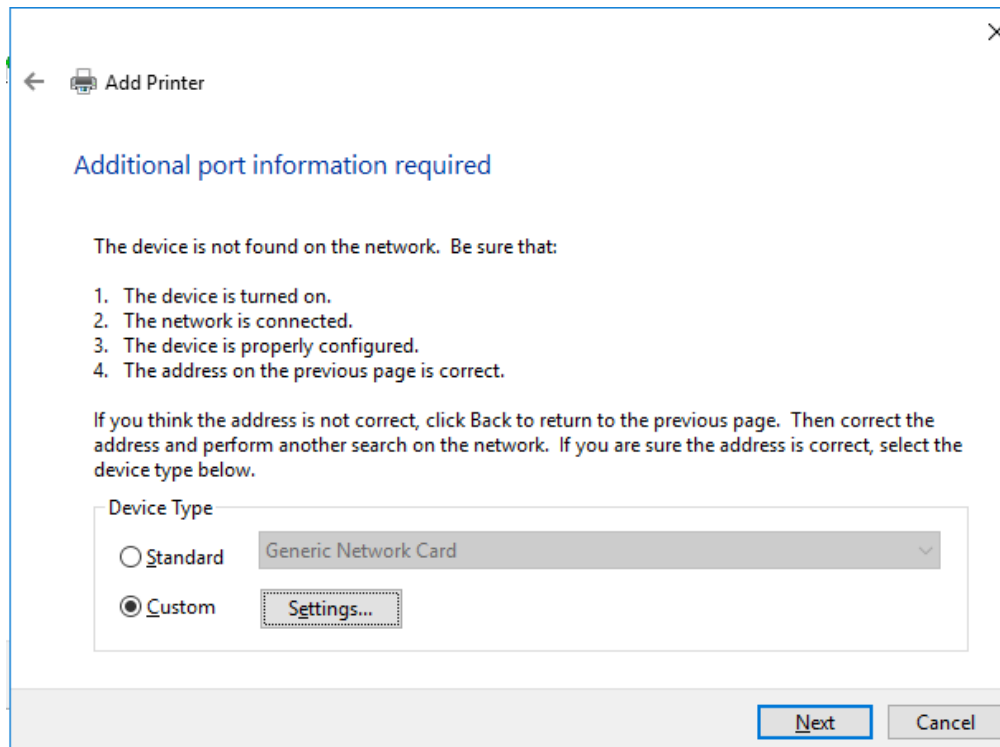
Detecting the TCP/IP port...
Windows will automatically move to the next page when the detection is done.



Next

Cancel

Select Custom and Click on Settings



← Add Printer

Additional port information required

The device is not found on the network. Be sure that:

1. The device is turned on.
2. The network is connected.
3. The device is properly configured.
4. The address on the previous page is correct.

If you think the address is not correct, click Back to return to the previous page. Then correct the address and perform another search on the network. If you are sure the address is correct, select the device type below.

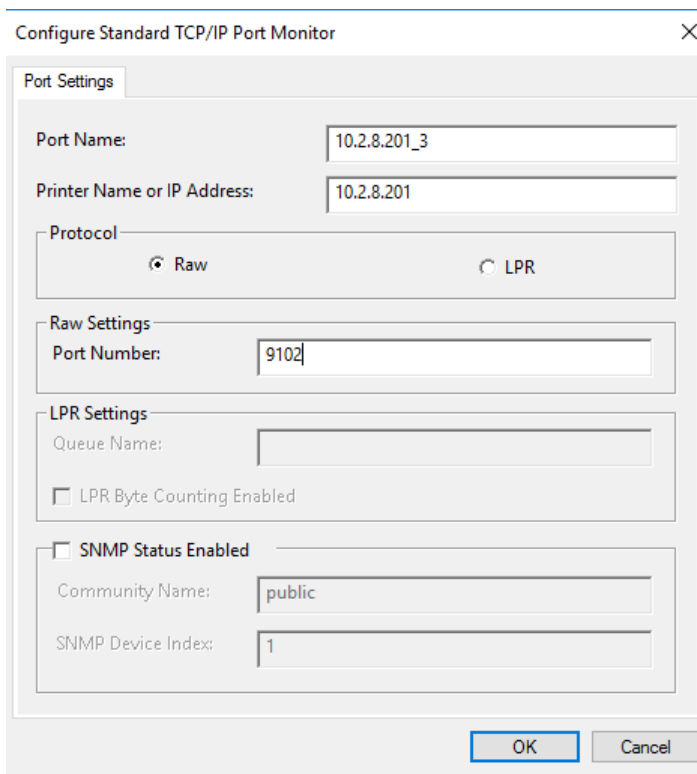
Device Type

Standard Generic Network Card

Custom Settings...

Next Cancel

Now, In Raw Settings Write Port Number and Click on OK



Configure Standard TCP/IP Port Monitor

Port Settings

Port Name: 10.2.8.201_3

Printer Name or IP Address: 10.2.8.201

Protocol

Raw LPR

Raw Settings

Port Number: 9102

LPR Settings

Queue Name:

LPR Byte Counting Enabled

SNMP Status Enabled

Community Name: public

SNMP Device Index: 1

OK Cancel

Click on Next

←  Add Printer

Additional port information required

The device is not found on the network. Be sure that:

1. The device is turned on.
2. The network is connected.
3. The device is properly configured.
4. The address on the previous page is correct.

If you think the address is not correct, click Back to return to the previous page. Then correct the address and perform another search on the network. If you are sure the address is correct, select the device type below.

Device Type

Standard Generic Network Card

Custom Settings...

Next

Cancel

Below Screen Appear after click on Next

←  Add Printer

Detecting the driver model...

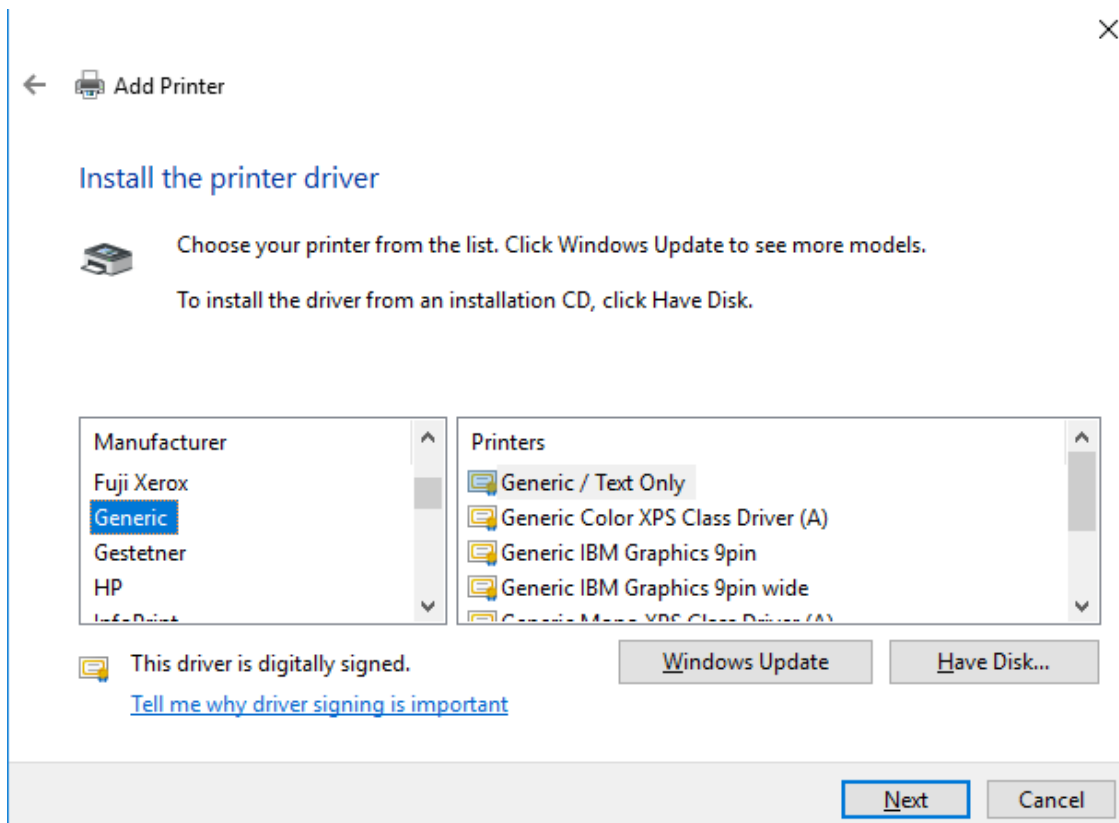
Windows is communicating with the printer and will automatically detect the printer driver to use.



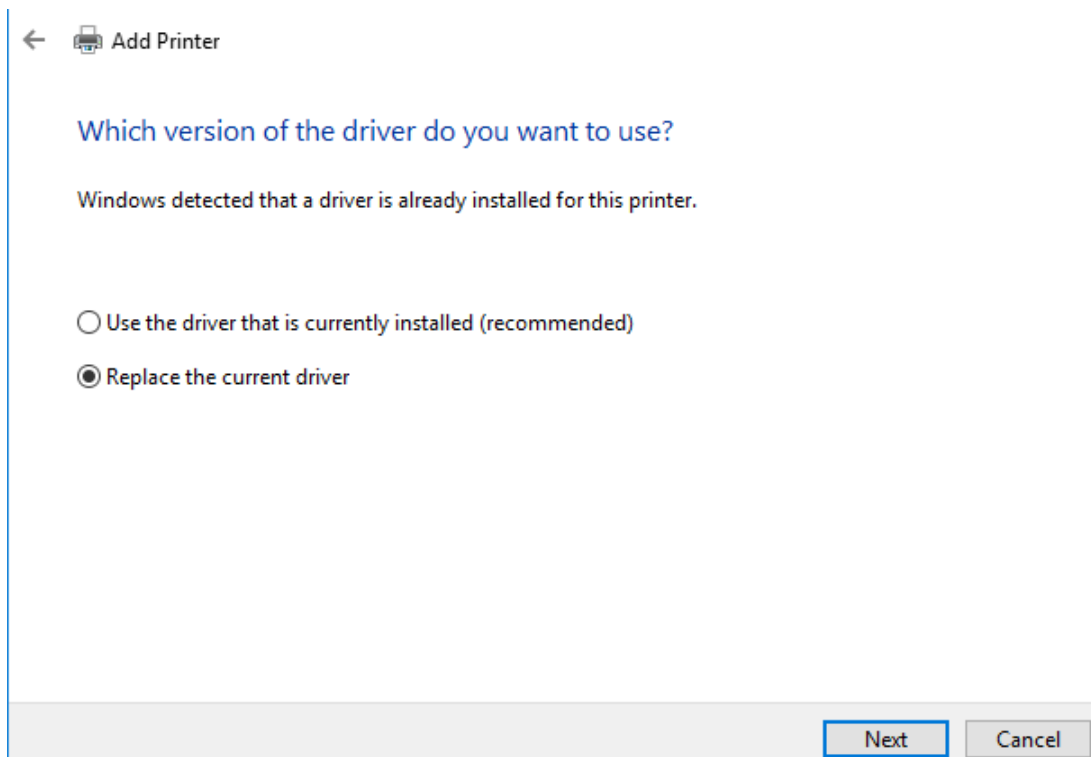
Next

Cancel

Select **Generic and Generic/Text only** as Shown Below. After that **Click on Next**.



Select Replace the current Driver and **Click on Next**



Write Printer Name and Click on Next.

←  Add Printer

Type a printer name

Printer name:

This printer will be installed with the Generic / Text Only driver.

Next

Cancel

Select do not share this printer and Click on Next.

←  Add Printer

Printer Sharing

If you want to share this printer, you must provide a share name. You can use the suggested name or type a new one. The share name will be visible to other network users.

Do not share this printer

Share this printer so that others on your network can find and use it

Share name:

Location:

Comment:

Next

Cancel

To check printer working properly or not **Click on Print a Test page.**

←  Add Printer

You've successfully added SCADA_ALM

Set as the default printer

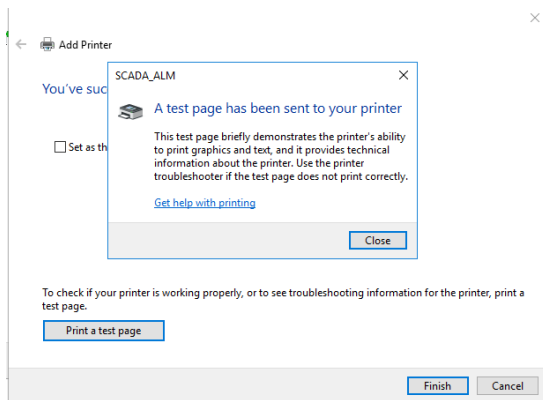
To check if your printer is working properly, or to see troubleshooting information for the printer, print a test page.

Print a test page

Finish


Cancel

After Successful Testing of Test page **Click on Close**



Activate Windows
Go to Settings to activate Windows.

Click on Finish

←  Add Printer

You've successfully added SCADA_ALM

Set as the default printer

To check if your printer is working properly, or to see troubleshooting information for the printer, print a test page.

[Print a test page](#)

[Finish](#)

[Cancel](#)

After Clicking on Finish Virtual Printer SCADA_ALM Appear As shown below.

Devices and Printers

Control Panel > All Control Panel Items > Devices and Printers

Add a device Add a printer See what's printing Print server properties Remove device

Devices (2)

- Generic Non-PnP Monitor
- WIN-NI98253642 R

Printers (10)

- Automation (HP LaserJet MFP M132fn)
- HMICHN1_46_GC
- Microsoft Print to PDF
- Microsoft XPS Document Writer
- Microsoft XPS Document Writer (redirected 2)
- NP13C818A (HP LaserJet M1536dnf MFP)
- NP1035A6A (HP LaserJet Professional M1213nf MFP)
- Send To OneNote 2013
- Send To OneNote 2013 (redirected 2)
- Send To OneNote 2013 (redirected 2)
- SCADA_ALM**