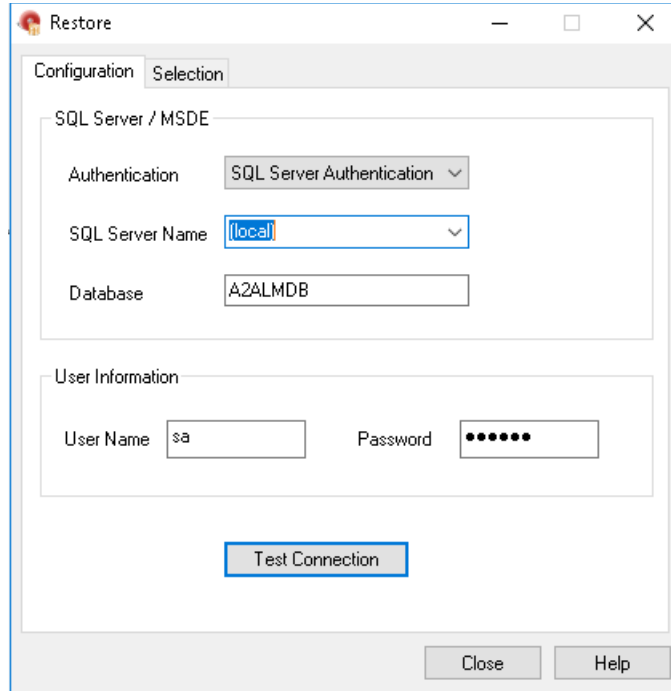


Alarm DB Restore Utility

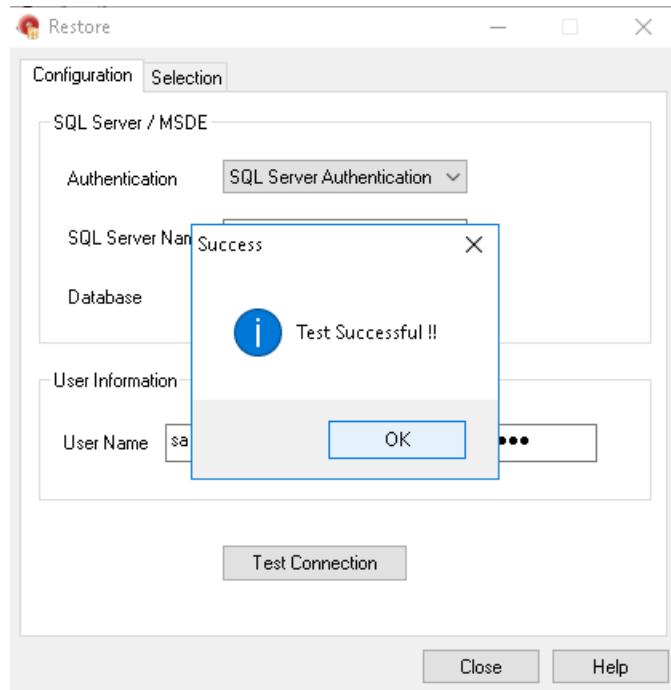
1. Start the Alarm DB restore utility as seen below. Complete the credentials as seen below. Click the Test Connection button to confirm that the newly created WWALMDB database has been created.



The 'Restore' utility window is shown with the 'Configuration' tab selected. It contains the following fields:

- SQL Server / MSDE**
 - Authentication: SQL Server Authentication (dropdown)
 - SQL Server Name: (local) (dropdown)
 - Database: A2ALMDB (text box)
- User Information**
 - User Name: sa (text box)
 - Password: (password field with 8 dots)

At the bottom of the configuration section is a 'Test Connection' button. At the bottom of the window are 'Close' and 'Help' buttons.



The 'Restore' utility window is shown with the 'Configuration' tab selected. A 'Success' dialog box is overlaid on top of the window. The dialog box contains the following text:

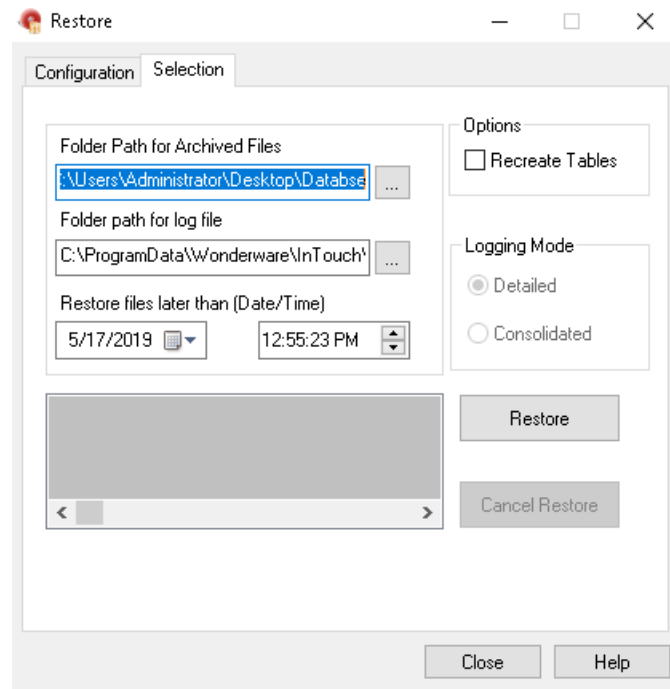
Success

Test Successful !!

OK

The background window shows the same configuration fields as the first screenshot, but the 'Test Connection' button is now disabled (grayed out).

2. Click the Selection Tab and select a Restore from date via the Calendar. Enter folder path and log file path.



3. Click on the restore it will restore data

