

New! System Platform 2017 with InTouch OMI

Convergence Platform **for** IT and OT

Cristian Marfà
EURA HMI & Supervisory
Aveva

The Schneider Electric industrial software business and AVEVA have merged to trade as AVEVA Group plc, a UK listed company.
The Schneider Electric and Life Is On trademarks are owned by Schneider Electric and are being licensed to AVEVA by Schneider Electric.

Confidential Property of AVEVA Group plc.

Themes

Easy to Build



Build Once for
multiple devices



Standards to Enforce
Consistency on any PLC

Easy to Use



Reduce Technical
Knowledge Barrier



Modern User Experience

Easy to Own



System
Simplification/Maintainability



Minimized Downtimes & Root
Cause Analysis



System Platform 2017

System Platform 2017

Introducing Operations Management Interface (OMI).
IT/OT convergence, user experience and scalability

+Operations Management Interface

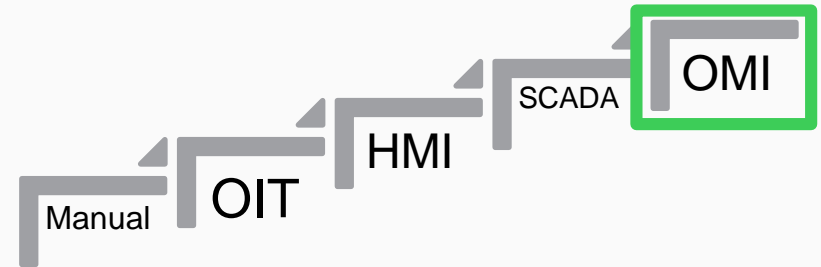
- +New approach to real-time *operational* visualization
- +New visualization technology built on ArchedrA graphics
- +Modern UX patterns

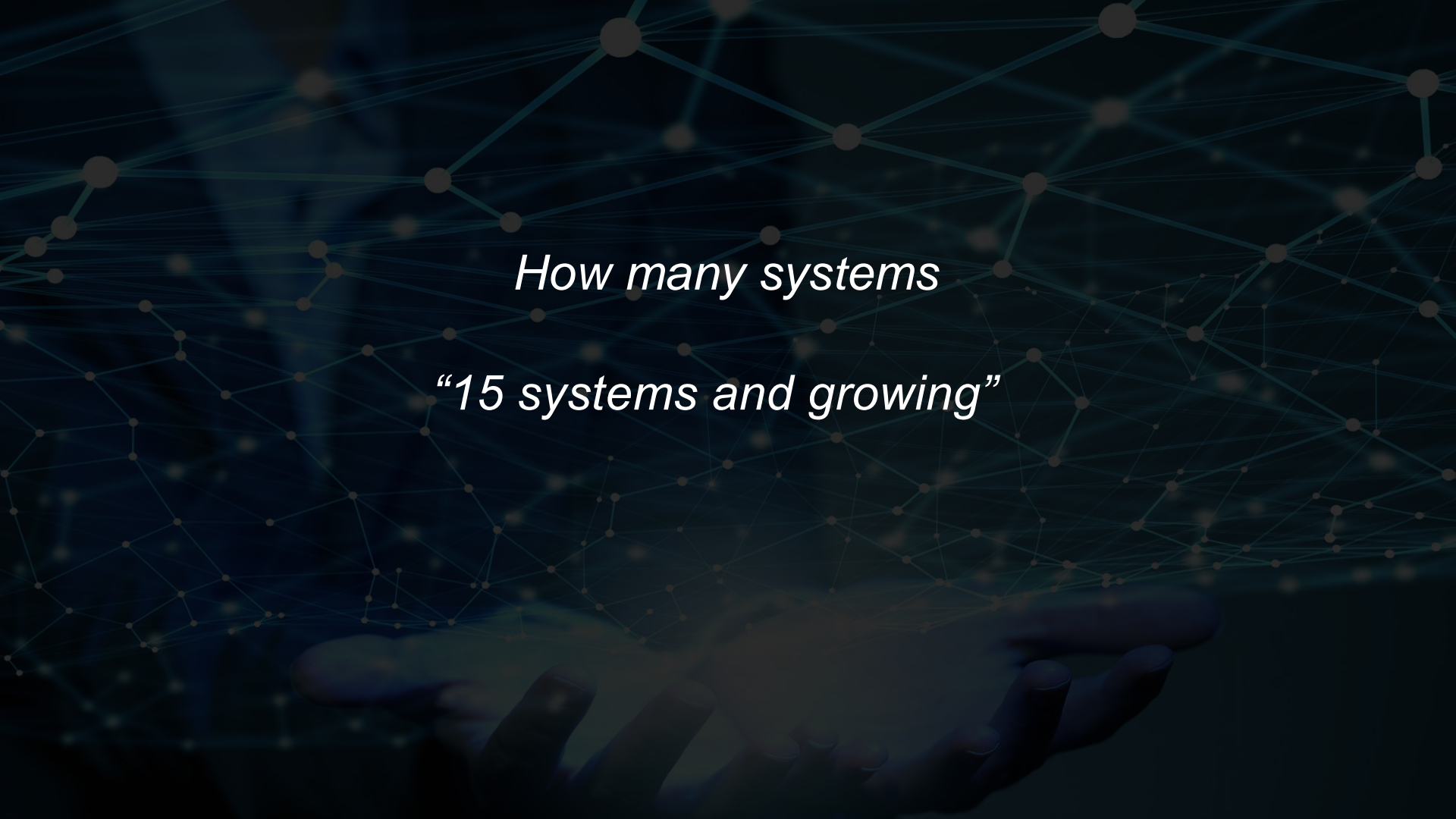
+Engineering experience

- +Asset wizards for flexible standardization
- +Modernization of editors

+Ownership and management

- +Gapless deployment
- +CS improvements
- +Footprint reduction





How many systems
“15 systems and growing”

Fragmented systems

Inconsistencies

- ✗ Engineering units
- ✗ Numerical formatting
- ✗ Mismatching language & terminology
- ✗ Mismatching user interface patterns

Lack of context

- ✗ Separate navigation
- ✗ Duplication of information
- ✗ Duplicate data entry

Consequences

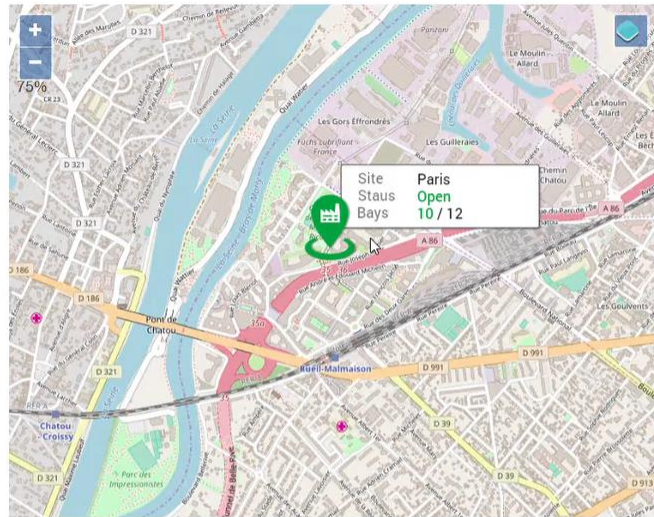
- ❓ **Stress & fatigue** from constant context switching
- ❓ **Reduced efficiency** due to managing systems instead of operational activities
- ❓ **Increased risk** of mistakes & errors in data entry



Winery

2 32 15 21

Home > Enterprise > Paris



ALARMS IN Fermenting

UNACKNOWLEDGED ALARMS

0 0 0 0

ACTIVE

MODE

Enable

PARIS WEATHER

Clear 6.4 km/h

TEMPERATURE

13.3 °C

TODAY'S MAX

13.3 °C

HUMIDITY

74 %

PRESSURE

1008 mbar

5 DAY FORECAST



ALARMS IN Storage

UNACKNOWLEDGED ALARMS

0 19 9 12

ACTIVE

MODE

37

Enable

TRUCK STATISTICS TODAY

TRUCKS UNLOADED

34/63

AVG TIME TO UNLOAD

1h25min

TANK STATUSES

IN USE

4

TO CLEAN

2

AVAILABLE

0



TANKS AVERAGE TEMPERATURES



ALARMS IN Bottling

UNACKNOWLEDGED ALARMS

0 0 0 0

ACTIVE

MODE

Enable

BOTTLEING

BOTTLES PRODUCED TODAY

15,000

ENERGY CONSUMPTION

245 kWh

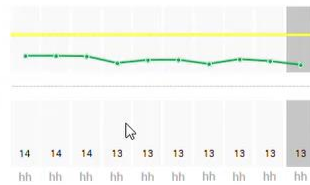
TODAY AVG POWER CONSUMPTION



FLEET MANAGEMENT



TANKS AVERAGE TEMPERATURES



ALARMS IN Fermenting

UNACKNOWLEDGED ALARMS

0 0 0 0

ACTIVE MODE
Enable

ALARMS IN Storage

UNACKNOWLEDGED ALARMS

0 36 12 12

ACTIVE MODE
32 Enable

ALARMS IN Bottling

UNACKNOWLEDGED ALARMS

0 0 0 0

Do you want to open Game bar?

☐ Yes, this is a game.

PARIS WEATHER

Rain 9.0 km/h

TEMPERATURE TODAY'S MAX

9.3 °C 9.9 °C

HUMIDITY PRESSURE

99 % 1005 mbar

5 DAY FORECAST

10 °C	11 °C	9 °C	10 °C	11 °C
10 °C	11 °C	9 °C	10 °C	11 °C
10 °C	11 °C	9 °C	10 °C	11 °C

TRUCK STATISTICS TODAY

TRUCKS UNLOADED

34/63

AVG TIME TO UNLOAD

1h25min

TANK STATUSES

IN USE TO CLEAN AVAILABLE
7 2 0



BOTTLEING

BOTTLES PRODUCED TODAY

15,000

ENERGY CONSUMPTION

245 kWh

TODAY AVG POWER CONSUMPTION

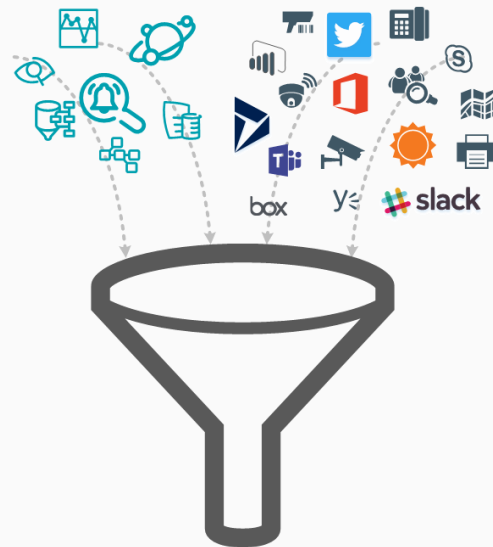


App Framework

Integration of systems and/or advanced visualization in a seamless and task-oriented user experience

- + **IT-OT convergence** by bringing together operational tools with IT-driven tools, services and devices
- + **Technology abstraction** by deliver a single application for systems based on different technologies
- + **Reduce stress, errors and redundant work** by presenting a single, consistent and context-driven user experience that hides systems fragmentation
- + **Commercialization** of reusable content and systems integration packages using an App business model

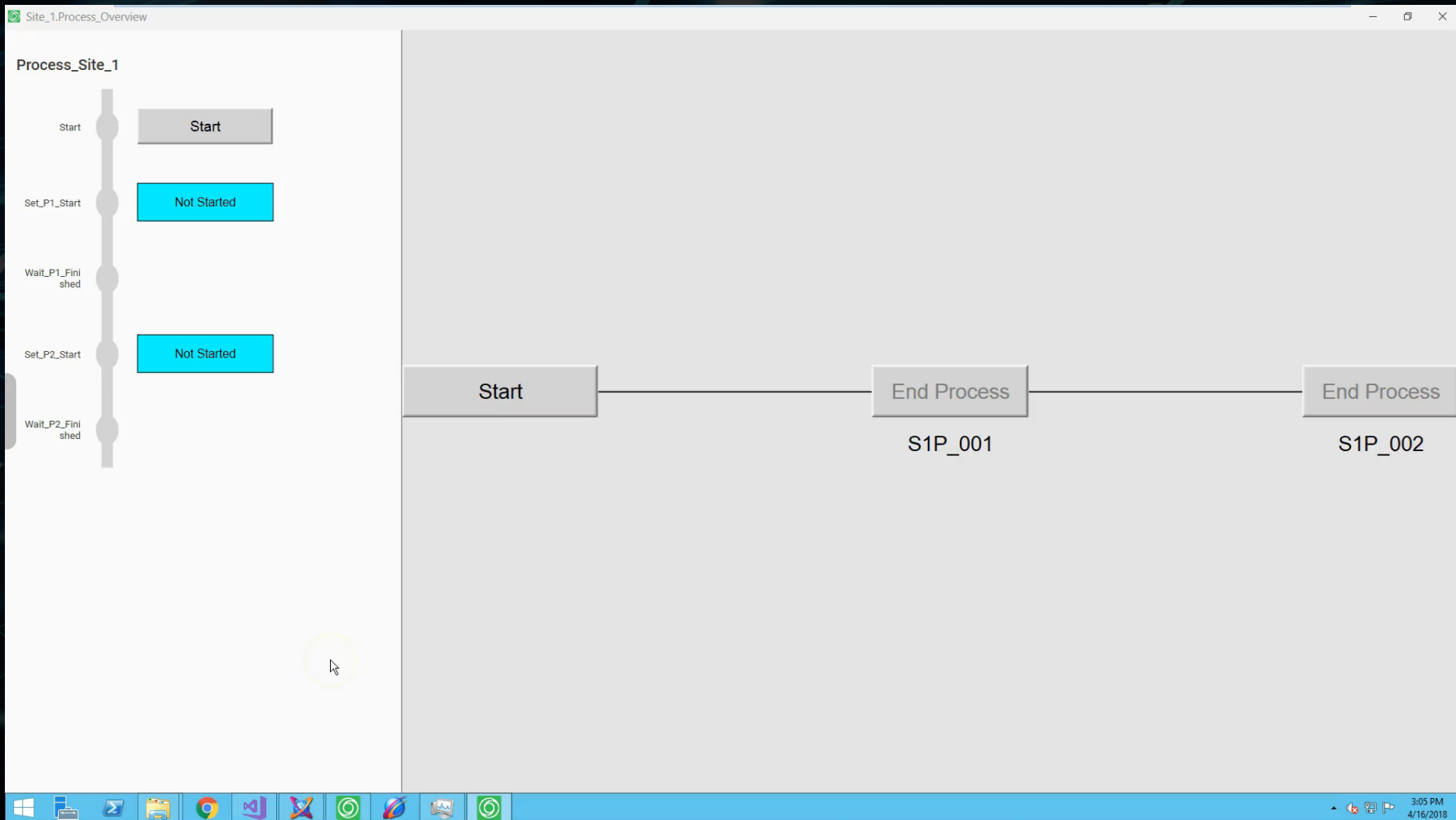
Wonderware software | Any software, service, device



InTouch OMI

Single, unified user experience
Contextually driven content





The app displays Skelta BMP activities

Galaxy Edit View Object Window Help

Graphic Toolbox

- GBI_Update_1_Test
 - _Default Content
 - My Content
 - 1. Screen Profiles
 - 2. Layouts
 - Main_Layout
 - 3. Graphics
 - ProcessButton
 - 4. Apps
 - SkeltaTimeLine

Deployment

- GBI_Update_1_Test
 - Unassigned Host
 - Platform
 - AppEngine
 - Plant
 - Simulator
 - Site_1 [Site_1]
 - S1P_001
 - S1P_002
 - Site_2 [Site_2]
 - S2P_001
 - S2P_002
 - Sys [_System]
 - WorkflowGateway_001
 - ViewEngine
 - Desktop_ViewApp_001

Model Status Deployment Degvation

Ready

IDE 2017 UPDATE 1

DefaultUser

GBI_Update_1_Test on W...

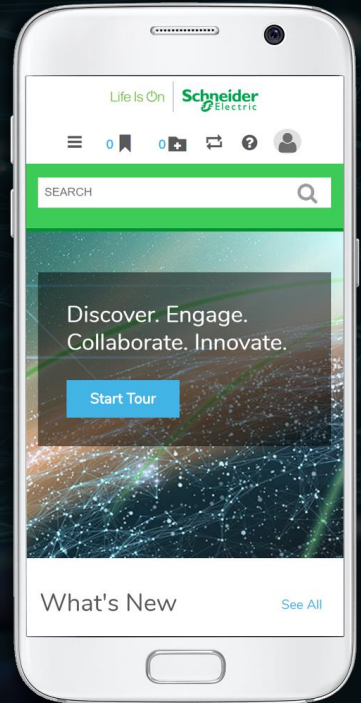
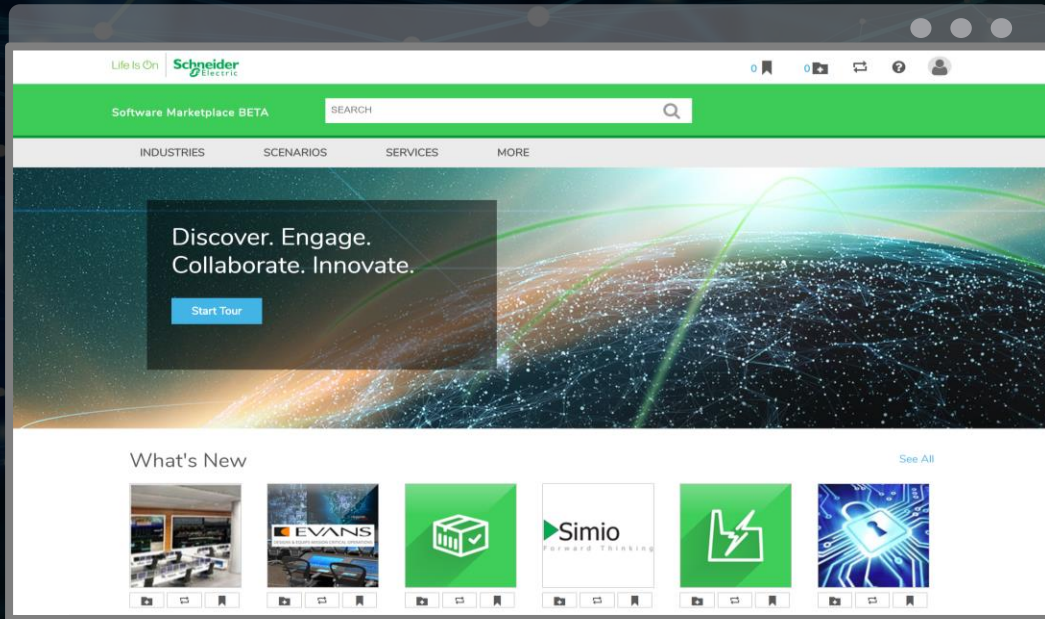
3:39 PM
4/16/2018

SOFTWARE MARKETPLACE

4,200
partners

16,000
customers

5,700
certified developers



GISize!

improve your scada



Options

- ☒ Layers ☐ Containers ☐ Navigation Model ☐ Configuration

Rotation

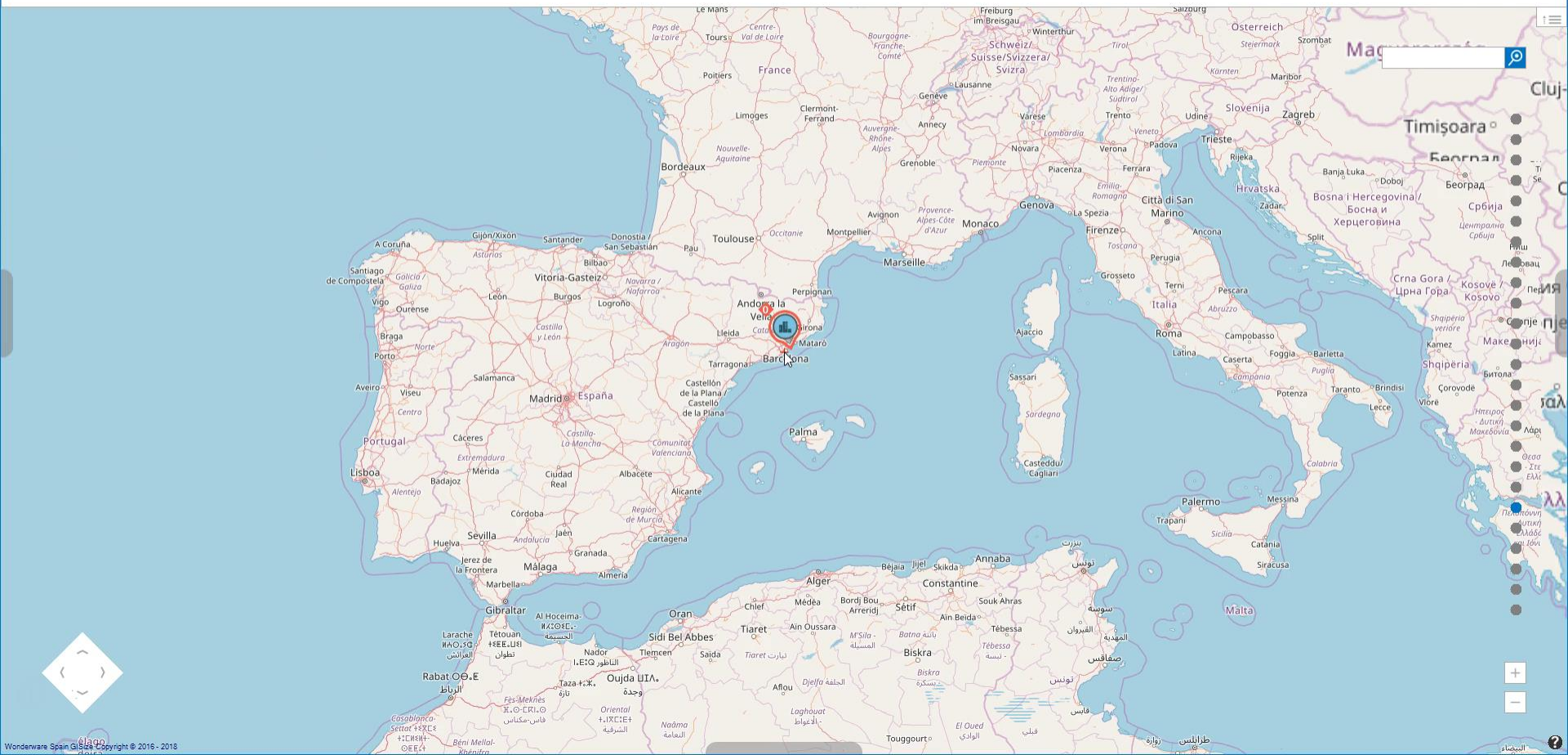


Coordinates

LAT: 41.3603186 LNG: 2.1313475

Map Provider

OpenStreetMap

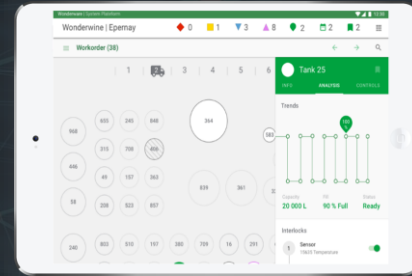
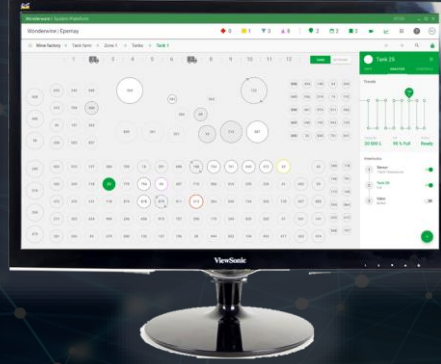




international



One Application – Many Experiences



Same content, different composition

Consistent user experience on any device reduces fatigue and stress, thus minimizing the risk of mistakes

Engineering efficiency by creating content once and using everywhere





ADNOC Onshore

1000
%

688049
\$/Day

1071
\$/Day

972
\$/Day

6457
\$/Day

6577
\$/Day

MONTHLY SATELLITE DATA

MONTHLY SATELLITE DATA

MONTHLY SATELLITE DATA

MONTHLY SATELLITE DATA

MONTHLY SATELLITE DATA

MONTHLY SATELLITE DATA

MONTHLY SATELLITE DATA

MONTHLY SATELLITE DATA

MONTHLY SATELLITE DATA

MONTHLY SATELLITE DATA

MONTHLY SATELLITE DATA

MONTHLY SATELLITE DATA

MONTHLY SATELLITE DATA

MONTHLY SATELLITE DATA

MONTHLY SATELLITE DATA

MONTHLY SATELLITE DATA

MONTHLY SATELLITE DATA

MONTHLY SATELLITE DATA

MONTHLY SATELLITE DATA

MONTHLY SATELLITE DATA

MONTHLY SATELLITE DATA

MONTHLY SATELLITE DATA

MONTHLY SATELLITE DATA

MONTHLY SATELLITE DATA

MONTHLY SATELLITE DATA

MONTHLY SATELLITE DATA

MONTHLY SATELLITE DATA

MONTHLY SATELLITE DATA

MONTHLY SATELLITE DATA

MONTHLY SATELLITE DATA

MONTHLY SATELLITE DATA

MONTHLY SATELLITE DATA

MONTHLY SATELLITE DATA

MONTHLY SATELLITE DATA

MONTHLY SATELLITE DATA

MONTHLY SATELLITE DATA

MONTHLY SATELLITE DATA

MONTHLY SATELLITE DATA

MONTHLY SATELLITE DATA

MONTHLY SATELLITE DATA

MONTHLY SATELLITE DATA

MONTHLY SATELLITE DATA

MONTHLY SATELLITE DATA

MONTHLY SATELLITE DATA

MONTHLY SATELLITE DATA

MONTHLY SATELLITE DATA

MONTHLY SATELLITE DATA

MONTHLY SATELLITE DATA

MONTHLY SATELLITE DATA

MONTHLY SATELLITE DATA

MONTHLY SATELLITE DATA

MONTHLY SATELLITE DATA

MONTHLY SATELLITE DATA

MONTHLY SATELLITE DATA

MONTHLY SATELLITE DATA

MONTHLY SATELLITE DATA

MONTHLY SATELLITE DATA

MONTHLY SATELLITE DATA

MONTHLY SATELLITE DATA

MONTHLY SATELLITE DATA

MONTHLY SATELLITE DATA

MONTHLY SATELLITE DATA

MONTHLY SATELLITE DATA

MONTHLY SATELLITE DATA

MONTHLY SATELLITE DATA

MONTHLY SATELLITE DATA

MONTHLY SATELLITE DATA

MONTHLY SATELLITE DATA

MONTHLY SATELLITE DATA

MONTHLY SATELLITE DATA

MONTHLY SATELLITE DATA

MONTHLY SATELLITE DATA

MONTHLY SATELLITE DATA

MONTHLY SATELLITE DATA

MONTHLY SATELLITE DATA

MONTHLY SATELLITE DATA

MONTHLY SATELLITE DATA

MONTHLY SATELLITE DATA

MONTHLY SATELLITE DATA

MONTHLY SATELLITE DATA

MONTHLY SATELLITE DATA

MONTHLY SATELLITE DATA

MONTHLY SATELLITE DATA

MONTHLY SATELLITE DATA

MONTHLY SATELLITE DATA

MONTHLY SATELLITE DATA

MONTHLY SATELLITE DATA

MONTHLY SATELLITE DATA

MONTHLY SATELLITE DATA

MONTHLY SATELLITE DATA

MONTHLY SATELLITE DATA

MONTHLY SATELLITE DATA

MONTHLY SATELLITE DATA

MONTHLY SATELLITE DATA

MONTHLY SATELLITE DATA

MONTHLY SATELLITE DATA

MONTHLY SATELLITE DATA

MONTHLY SATELLITE DATA

MONTHLY SATELLITE DATA

MONTHLY SATELLITE DATA

MONTHLY SATELLITE DATA

MONTHLY SATELLITE DATA

MONTHLY SATELLITE DATA

MONTHLY SATELLITE DATA

MONTHLY SATELLITE DATA

MONTHLY SATELLITE DATA

MONTHLY SATELLITE DATA

MONTHLY SATELLITE DATA

MONTHLY SATELLITE DATA

MONTHLY SATELLITE DATA

MONTHLY SATELLITE DATA

MONTHLY SATELLITE DATA

MONTHLY SATELLITE DATA

MONTHLY SATELLITE DATA

MONTHLY SATELLITE DATA

MONTHLY SATELLITE DATA

MONTHLY SATELLITE DATA

MONTHLY SATELLITE DATA

MONTHLY SATELLITE DATA

MONTHLY SATELLITE DATA

