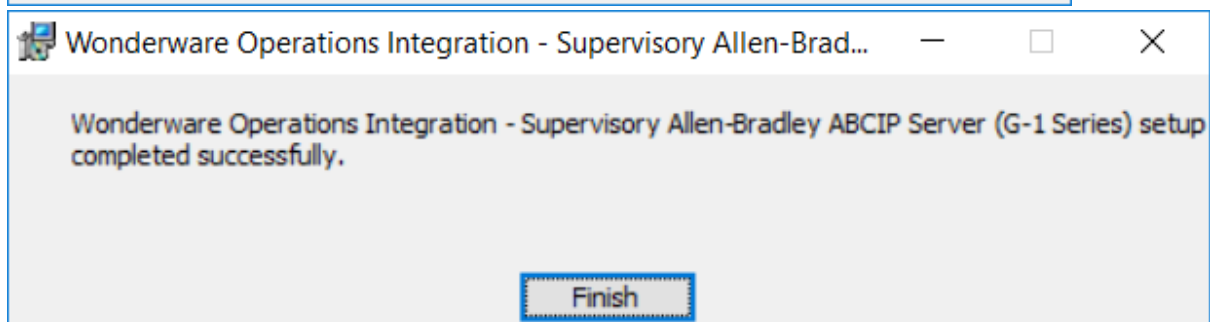
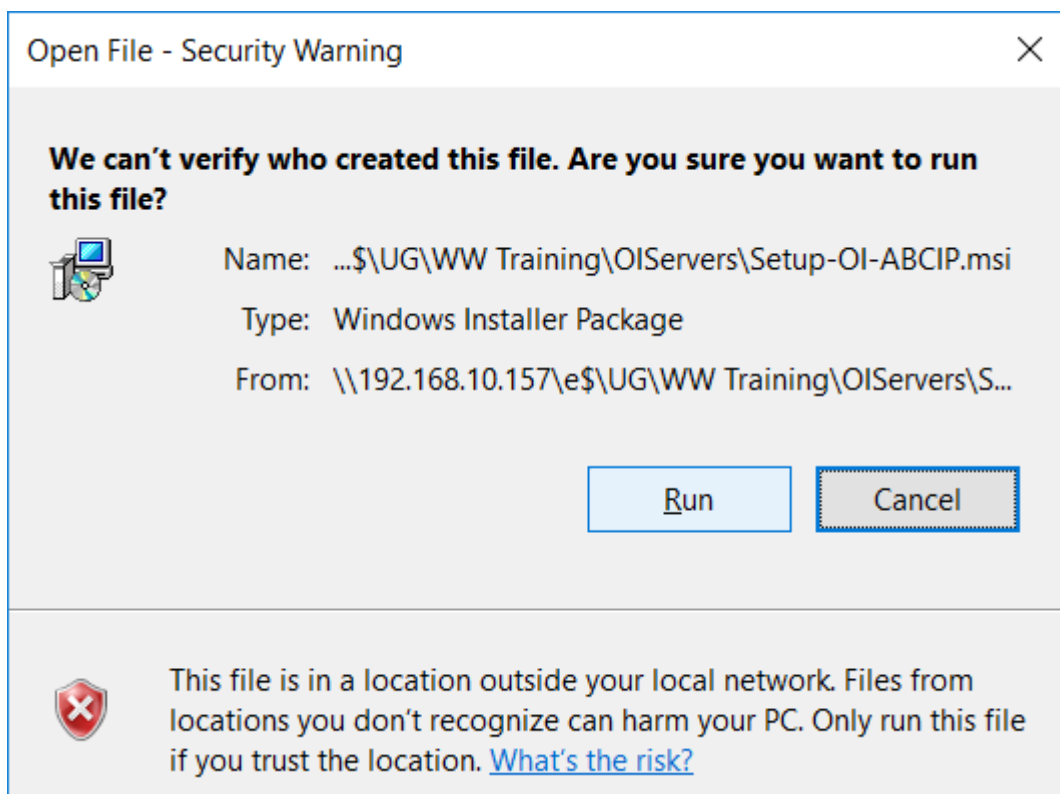
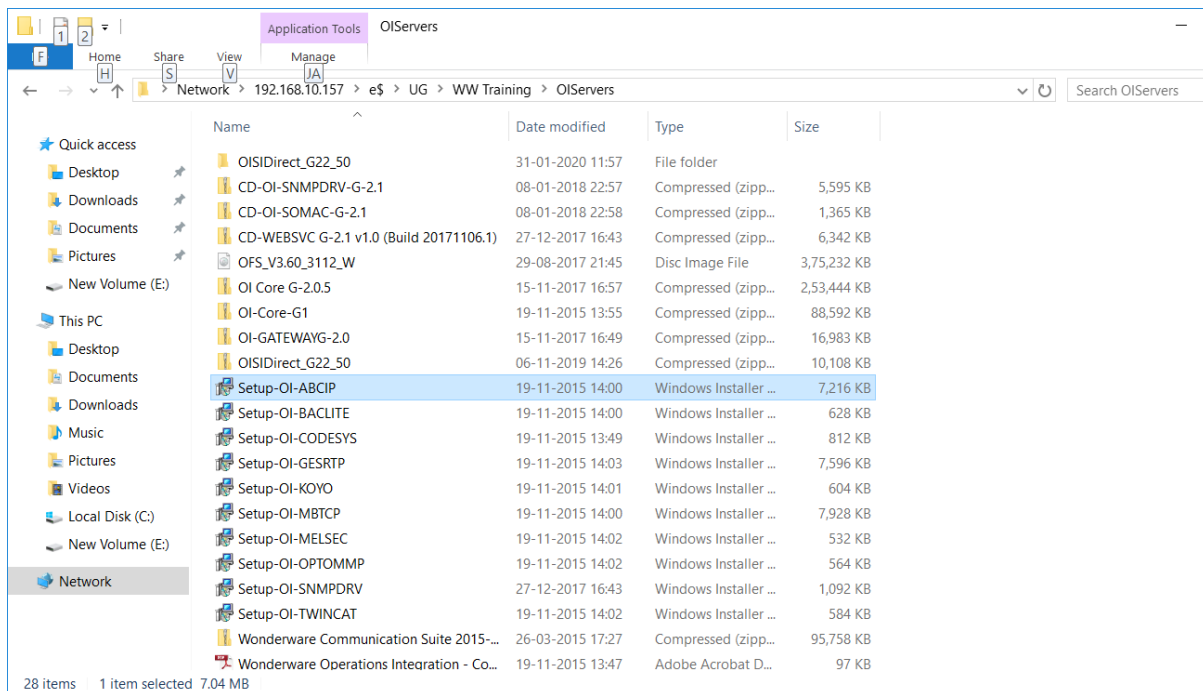
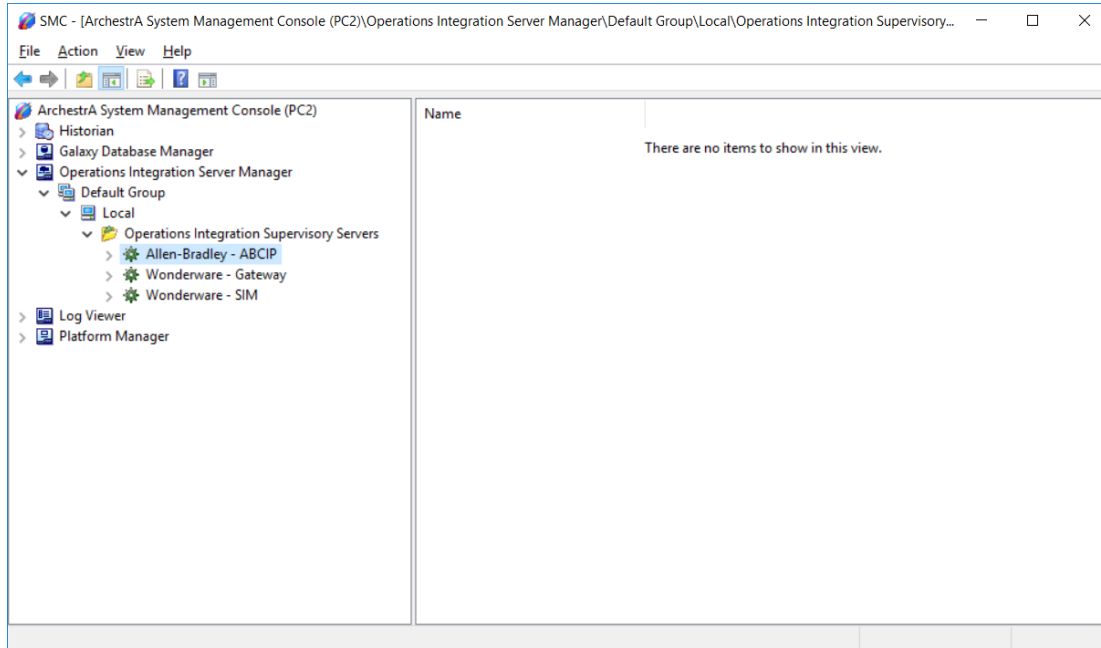


## Step-1: Install OI Server PLC Driver

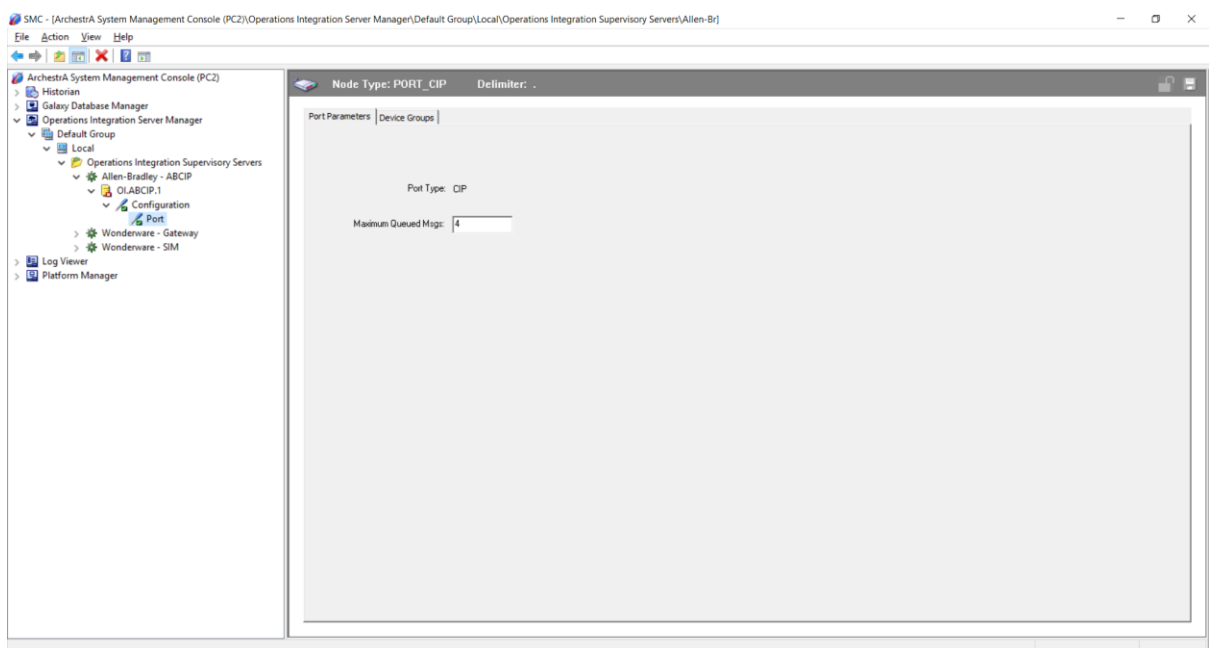
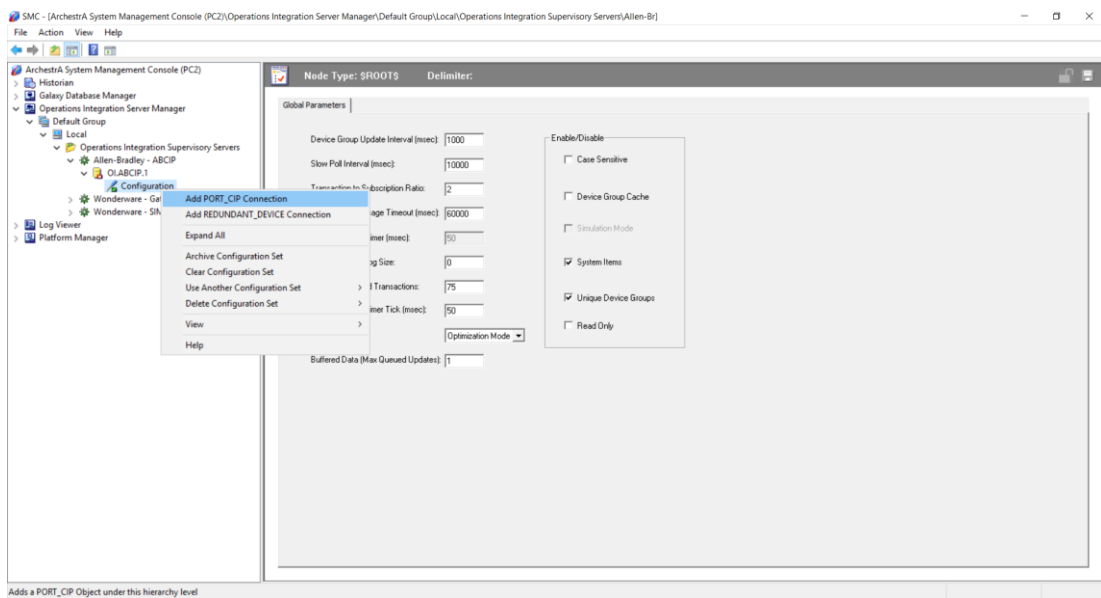


## Step-2: Open System Platform Management Console (SMC)

Step-3: Drill down list as shown below.

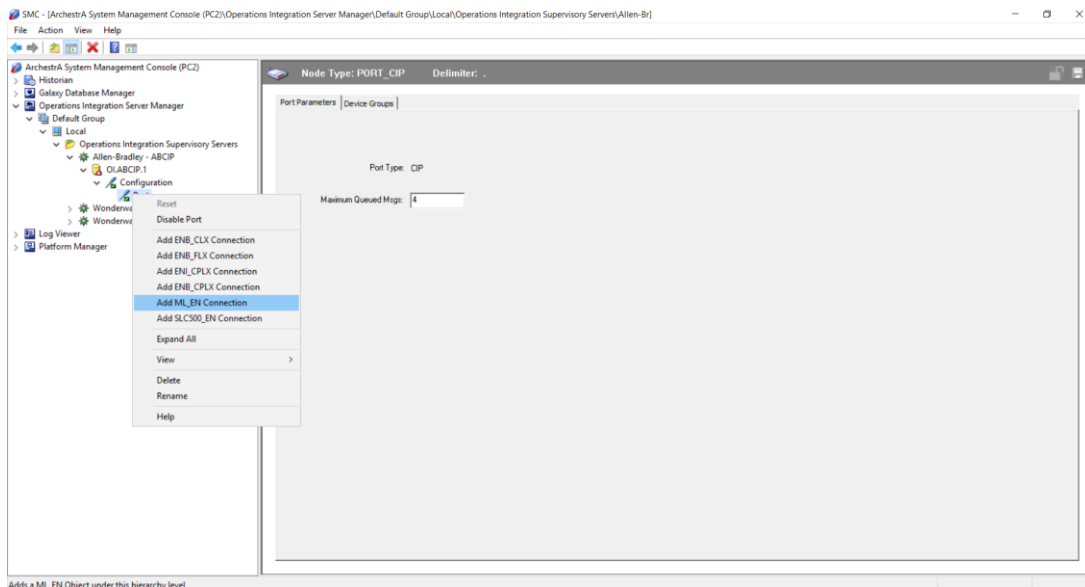


## Step-4: Add Port

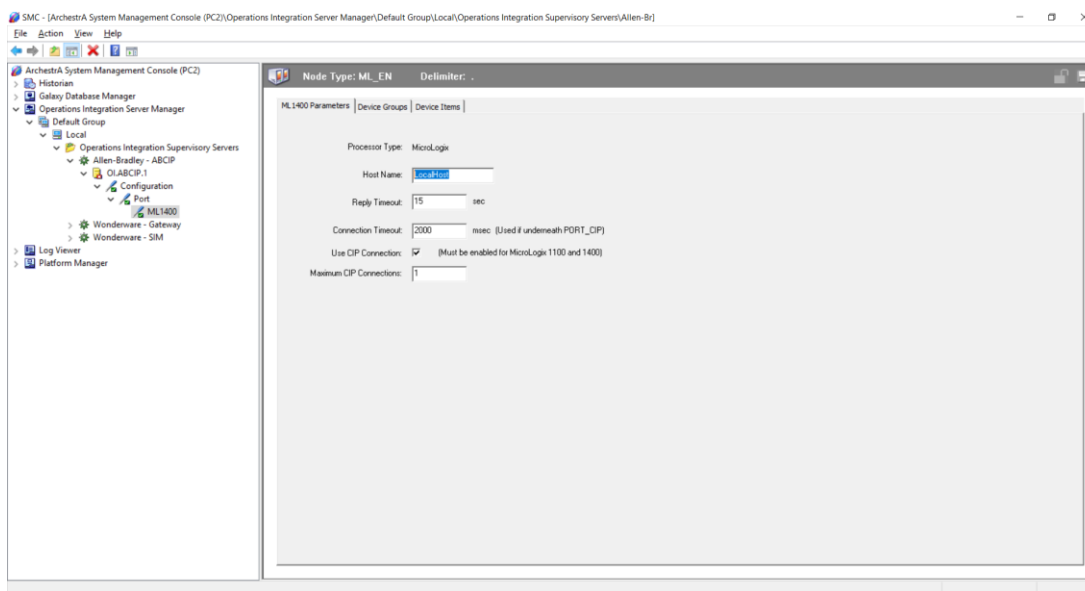


## Step-5: Port Added.

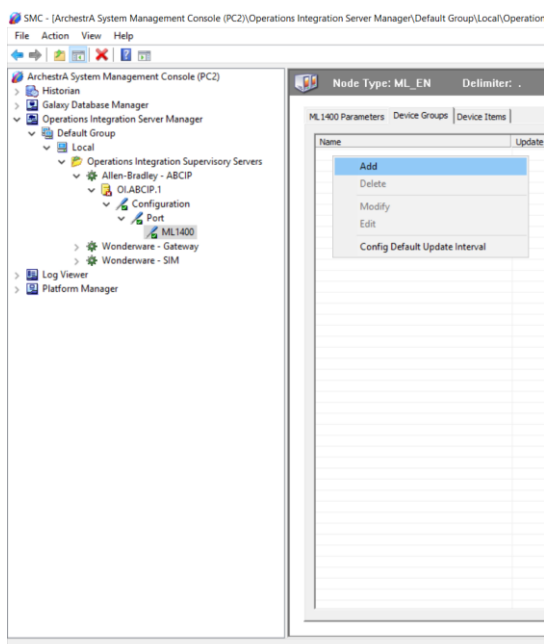
## Step-6: Add PLC



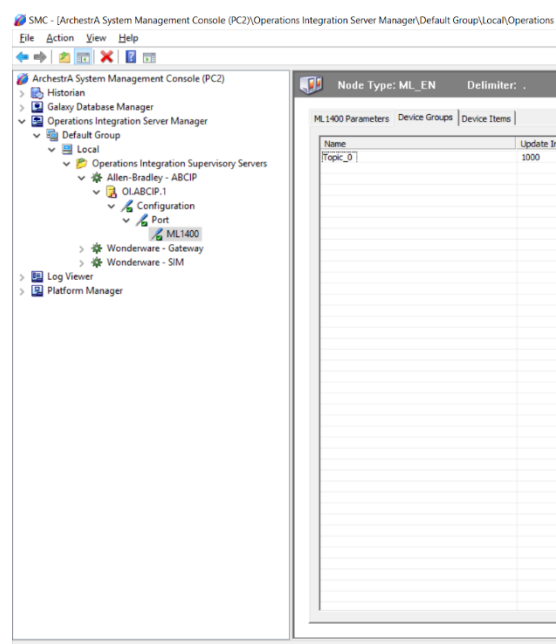
## Step-7: Add IP of PLC in Node name.



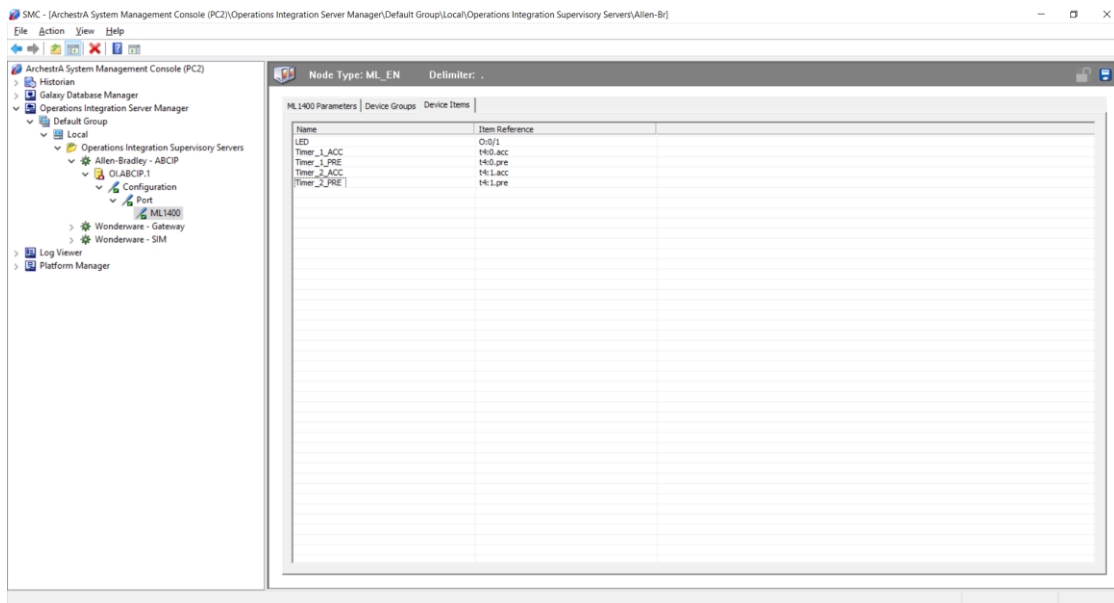
## Step-8: Add topic (Right Click)



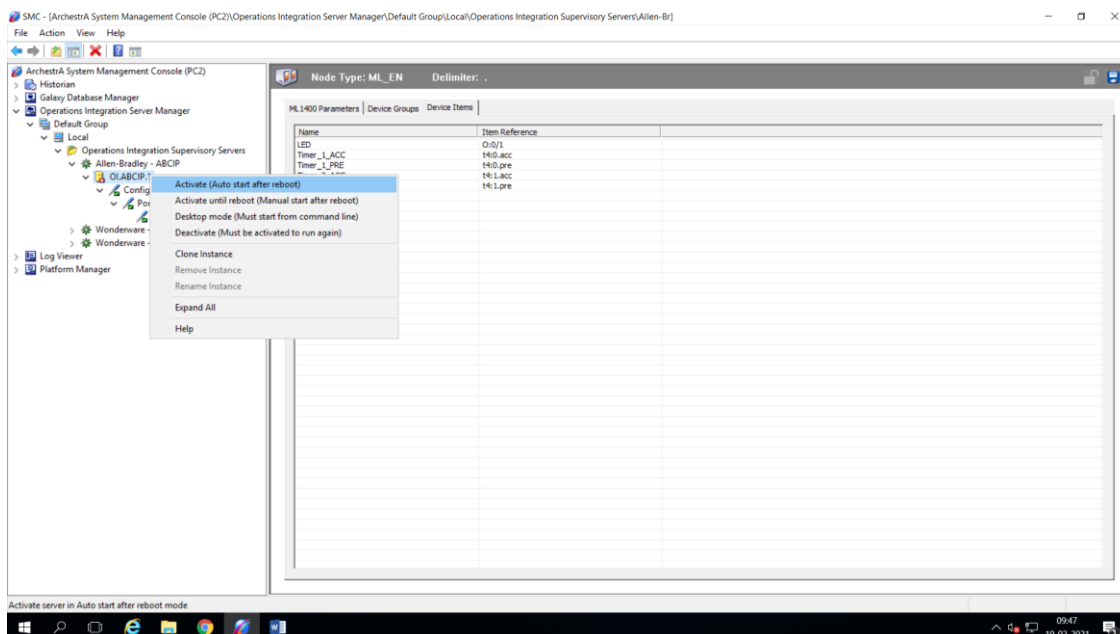
## Step-9: Topic Added



## Step-10: Add PLC I/O addresses and Tagname as shown.



## Step-10: Activate OI.ABCIP



## Step-11: Save the Configuration

