



X-Docx

[EDIT PAGE](#)

[EDIT CONTROL CONFIGURATION](#)

SSM INFOTECH SOLUTIONS PVT. LTD.



Exercise 1: Edit Controls: Browse, Multi-browse and Grid Control

Introduction:

In this exercise we will study about Browse control, Multi-Browse control and Grid Control. For Creating Browse control, Multi-Browse control and Grid Control we have to make entry in tbl_int_editcolumns.

Database:

Configuration Database

Database Objects:

Tables:

1. tbl_int_editcolumns

Procedure:

1. Edit Controls:

- a. Browse:** We want to Upload Files that time Browse Control is used.
- b. Multi-Browse:** We want to Upload more than one Files then Multi-browse Control is used. To using Multi-browse Control that time create link between two tables.
 - i.** To Creating Multi-Browse Control then Create New Table that is NotesLinked in that Following Fields Add and that Field are compulsory:

ColumnName	DataType
ID	varchar(36)
Date_entered	datetime
Date_modified	datetime
Modified_user_id	varchar(36)
Created_by	varchar(36)
Deleted	char(1)
IsSystem	char(1)
Assigned_user_id	varchar(36)
MID	varchar(36)
SID	varchar(36)
Srno	int
DefaultRec	tinyint



Type	varchar(500)
------	--------------

Table 1.1: Table Design of NotesLinked

- ii. Creating Link Between Two Table So, Create View as Per Requirement
- iii. For Creating multi-browse do entry in following table:

Column	Description
ID	Unique Identity
ParentID	It should be ID of Edit Page
TableName	Name of Table where you want to save records
Name	Name of column in table where you want to save data
ColumnType	Type of column like string
ControlType	Multibrowse
refTableName	Reference Table Name that You wants to save particular fields with other table fields
refTableColumn	Reference table Column name .By Default set <record.id>
refTableRelationColumn	Reference table Relation Field For Example, select [SID], '~/open.aspx?notesid=' + [SID] as Link,[filename],upload_user,upload_date,default trec,type from vw_Price_Notes where MID='{0}' order by upload_date desc (Here, vw_Price_Notes is View Name)
cmbTableName	Name of Table or View form data are coming

Table 1.2: Fields of tbl_int_editcolumns

- c. **Grid:** This control is used to create grid as edit page. When this control is used it should be necessary to make column type group.

Example:

1. Edit Controls:

a. **Browse:** Followings are Entry of Browse in tbl_int_editcolumns:

Column	Value
ParentID	39cc5adc-14fc-4b1a-9431-6802b4636f0d (ID Of Edit page)
Srno	150
TableName	fileupload
Name	Filepath
ColumnType	String
ColumnLabel	filepath
ColumnDescription	filepath
ColumnToolTip	filepath Enter filepath here
ControlType	browse

Table 1.3: Entry of Browse Control

Note: - When we wants to use **browseimg** control then same as above entry only change **ControlType** is "browseimg" and When File Upload then Notesid automatically generate.

NOTE: For use browse control create following three folder if folder is not available in your publish folder then . 1).TempUploads 2) Document

Following figure show that how Browse Control look like at user side:

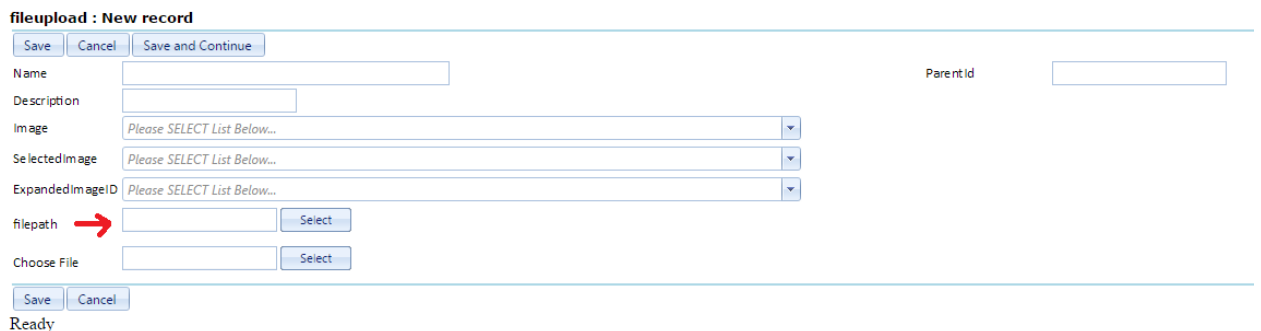


Fig. 1.1: Example of Browse Control



- b. **Multi-Browse:** Followings are Entry of Multi-Browse in tbl_int_editcolumns:

Column	Value
ParentID	7f899548-465f-4459-ae84-f5307c46ed13 (ID Of Edit page)
Srno	161
TableName	MM_Price
Name	Quote
ColumnType	string
ColumnLabel	QuoteReference
ColumnDescription	QuotetionReference
ColumnToolTip	Quotetion Upload Quotetion here
ControlType	Multibrowse
Visible	"<request.pagemode>="edit"
refTableName	MM_Price_NotesLinked
refTableColumn	<record.id>
refTableRelationColumn	select [SID], '~/open.aspx?notesid=' + [SID] as Link,[filename],upload_user,upload_date,default rec,type from vw_Price_Notes where MID='{0}' order by upload_date desc
cmbTableName	NULL

Table 1.4: Entry of Multi-Browse

Following figure show that how Browse Control look like at user side:

MM_Price:

Save Cancel Save and Continue

Material Name Power Supply

Supplier Name yantra automation pvt.ltd

Price 22011.00

Currency Rupees

Price Date 16-Aug-2014

Special Price No Price Validity Days 30.00

Subject Attachment Select

QuoteReference Add

Uploaded date	Uploaded by	Attachment	Subject
No records to display.			

ExciseTax(%) 0.00

SalesTax 15.00

ServiceTax(%) 0.00

PF 0.00

AdditionalVAT 0

Insurance 0.00

Save Cancel

Ready

Fig. 1.2: Example of Multi-Browse Control

Note: - This Multi-Browse is visible on Edit Page mode.

c. **Grid:** Followings are Entry of Grid in tbl_int_editcolumns:

Column	Value
ParentID	2578c046-5755-4a1c-84c4-7b53b93f39d6 (ID Of Edit page)
Srno	125
TableName	MM_Item
Name	MM_Item
ColumnType	Group
ColumnLabel	MM_Item
ColumnDescription	MM_Item
ColumnToolTip	 ITEMS ITEMS
ControlType	Grid
AutoDefaultValue	550fadf2-a9a8-4a42-9 (ID Of Edit page)

Table 1.5: Entry of Grid

Note: - When we use grid at that time we have to use all control name as grid **For example.** gridlabel, gridcheckbox etc.

Following figure show that how Grid Control look like at user side:

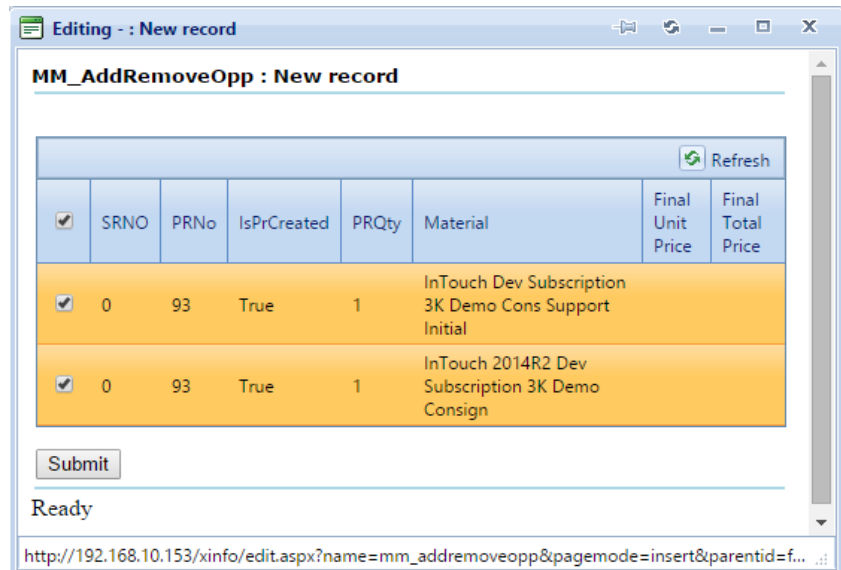


Fig. 1.3: Example of Grid Control



SSM InfoTech Solutions Pvt. Ltd.

Created On : 13-Nov-2019

Created By : Mrs. Twinkle Patel