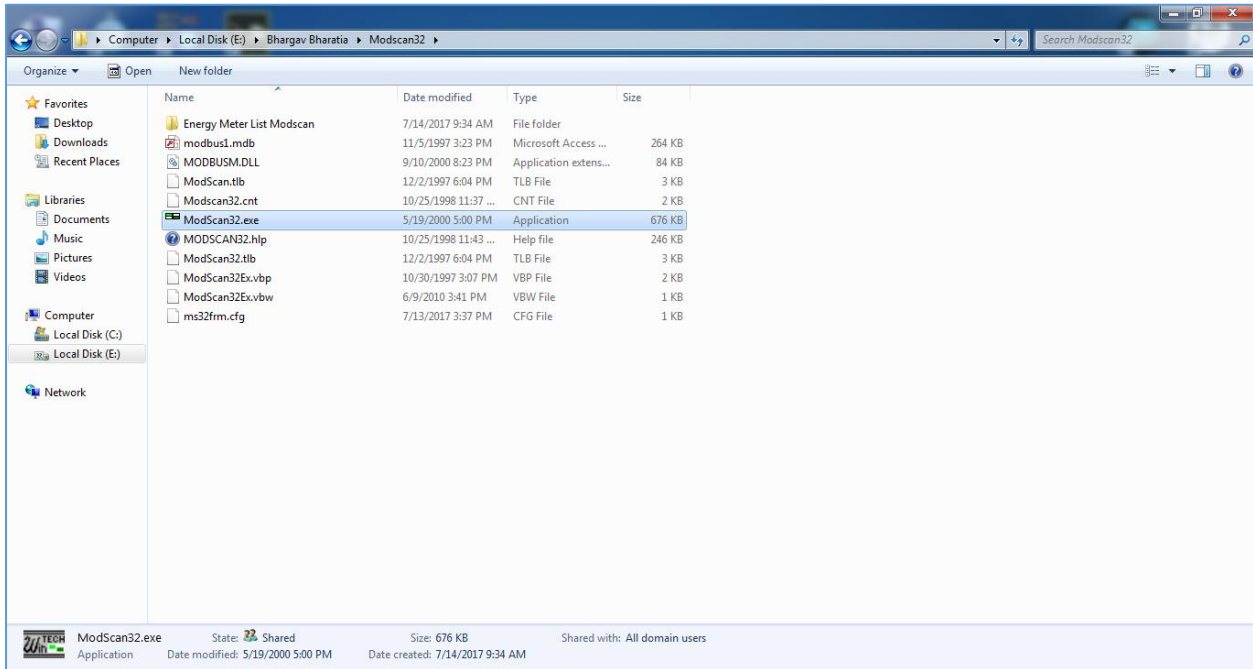




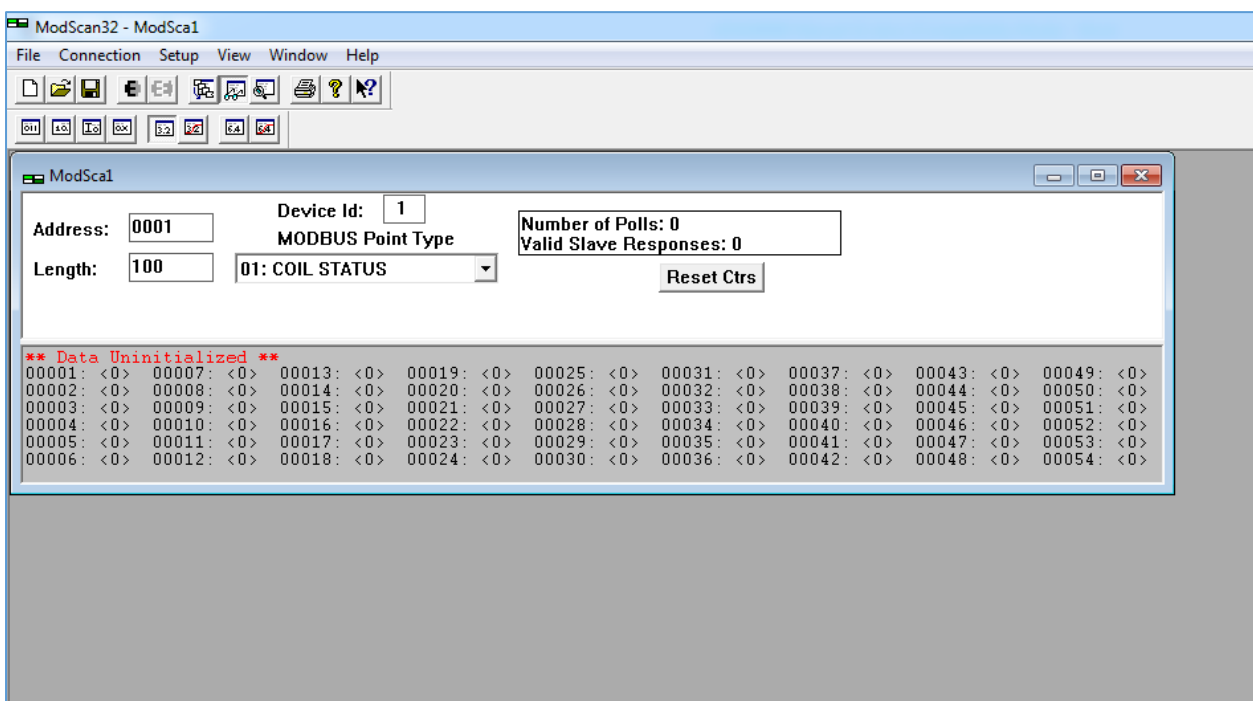
PLC- Modicon Configuration

TM200C24R Schneider

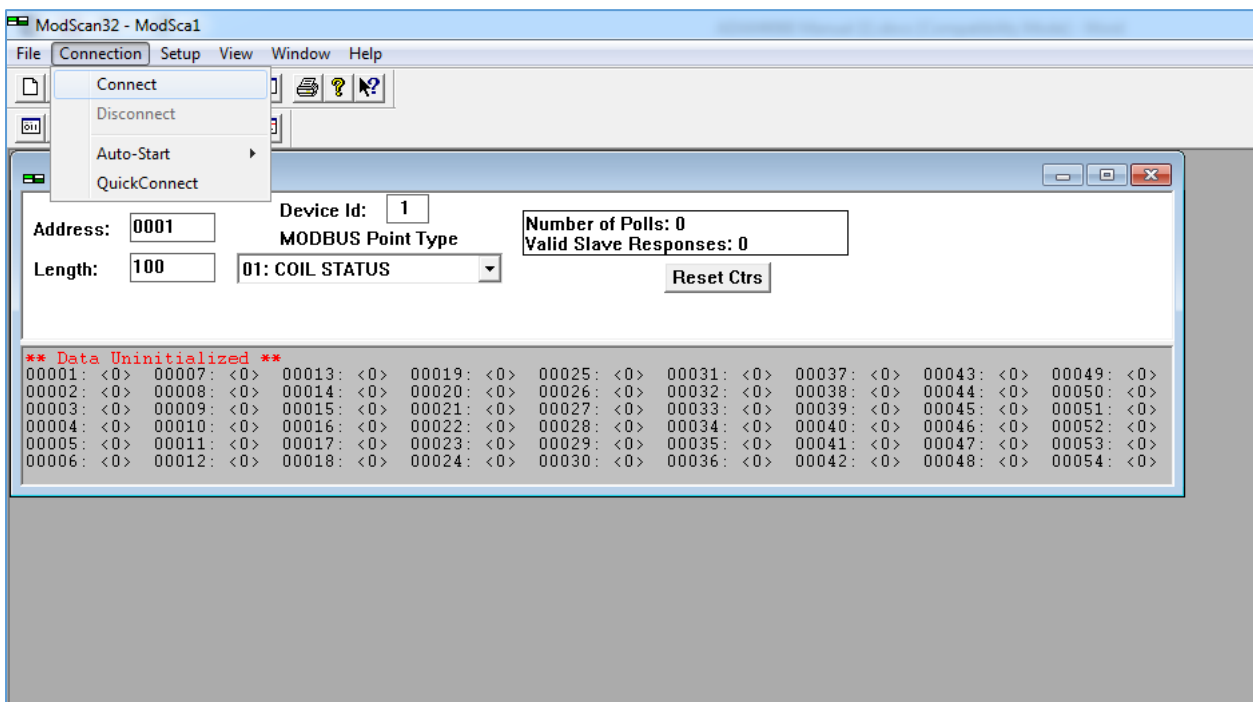
- First, Install MOXA Card and Moxa Serial Cable on PC.
- Install Modscan software to check PLC is connected or NOT.
- Double Click on Modscan.exe icon from Installation folder.



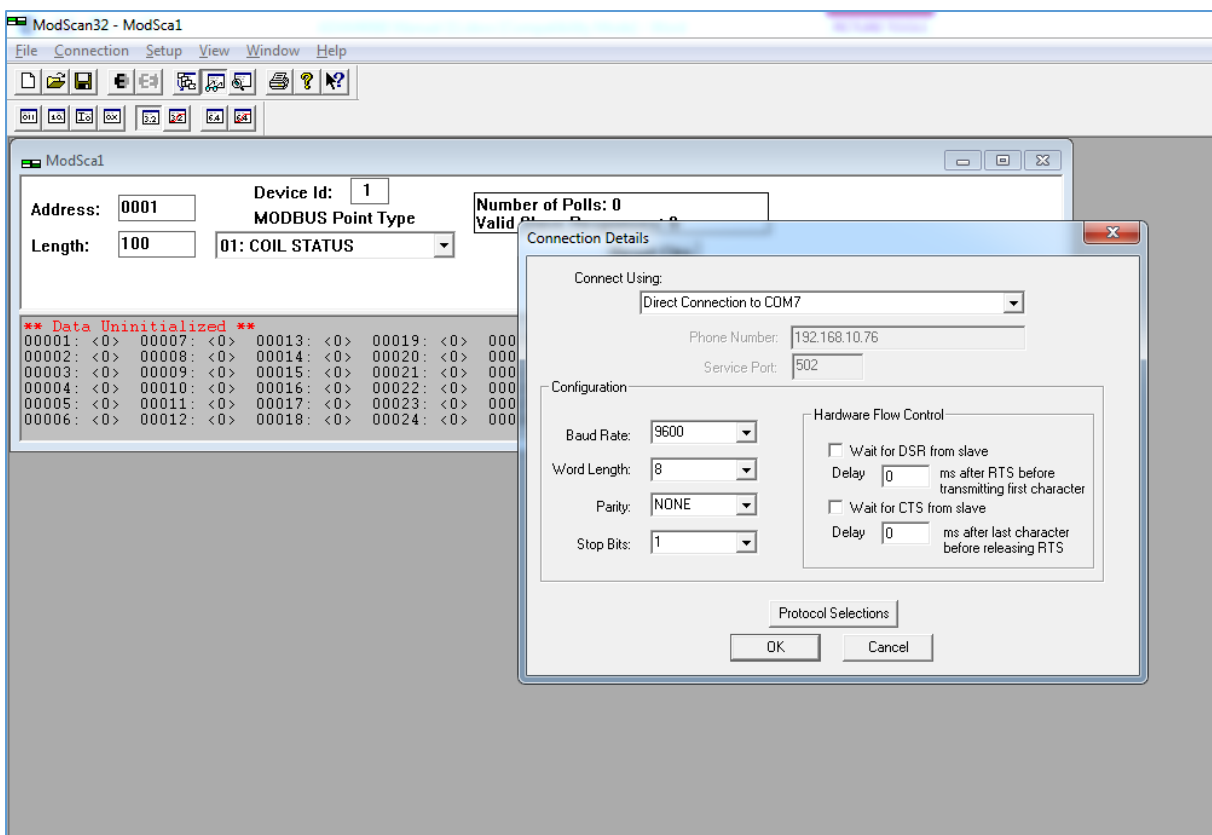
- Now you can see below Default Screen of Modscan Software.



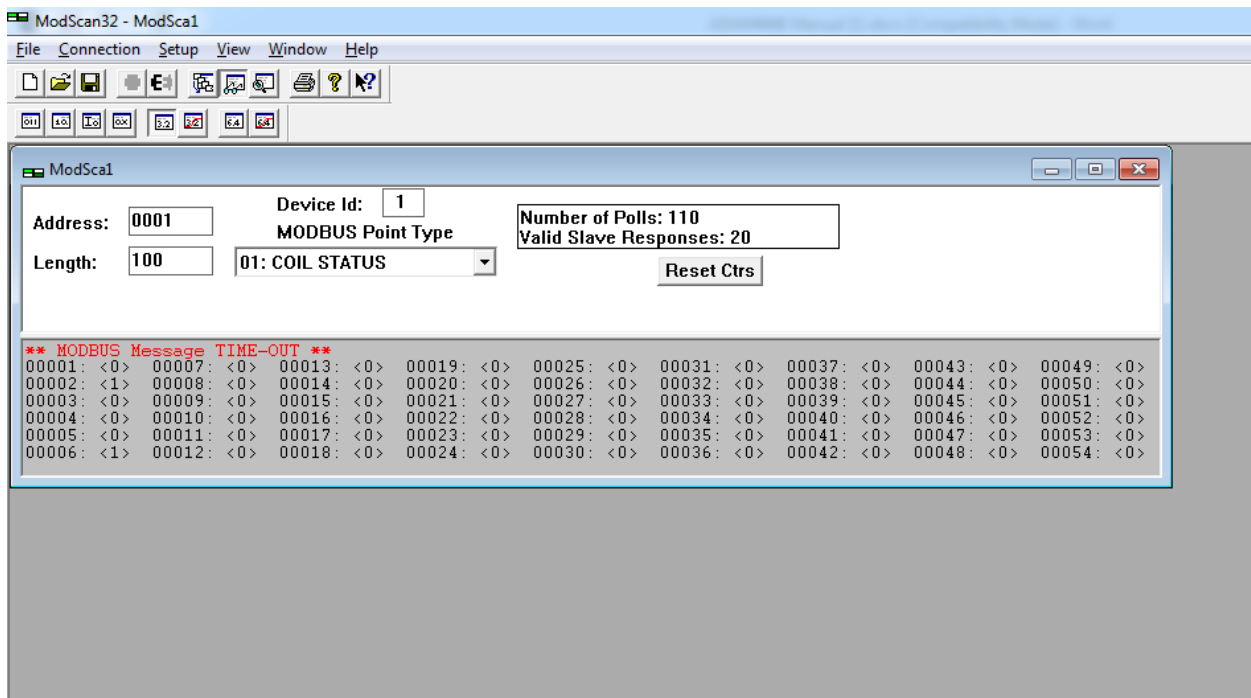
- Click on Connection in Menu bar and click on Connect.



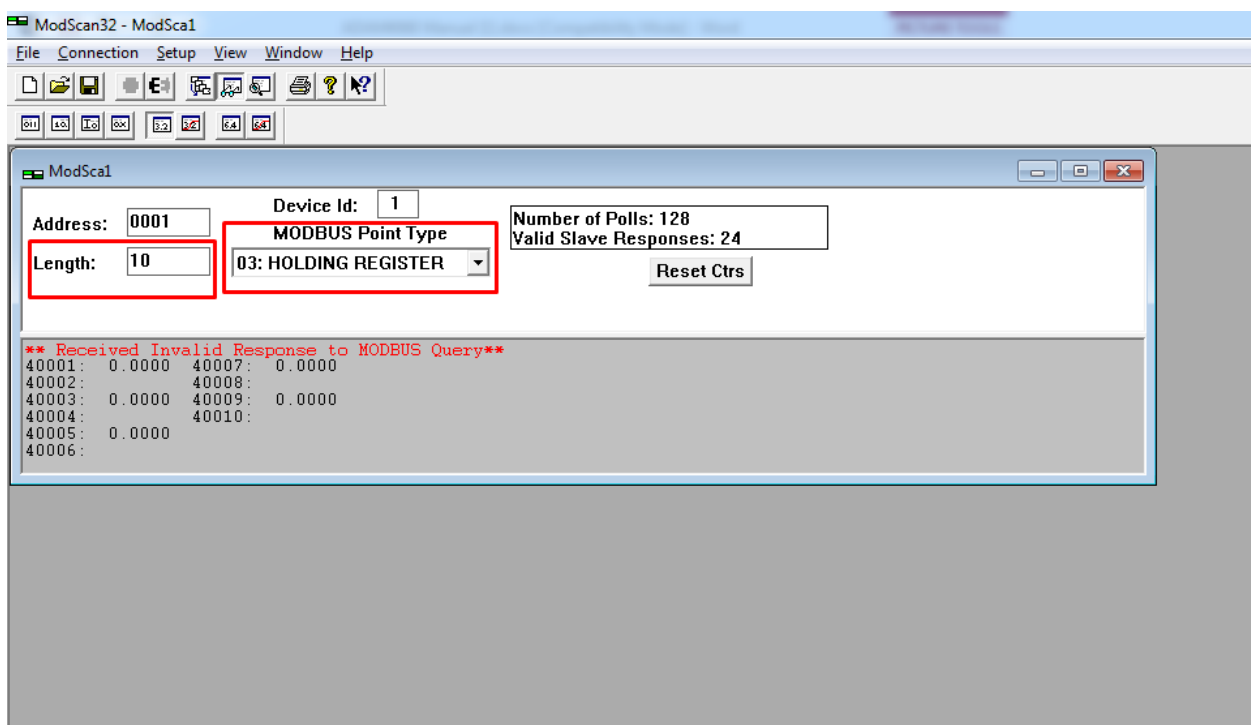
- Then Select the Port on which PLC is connected.



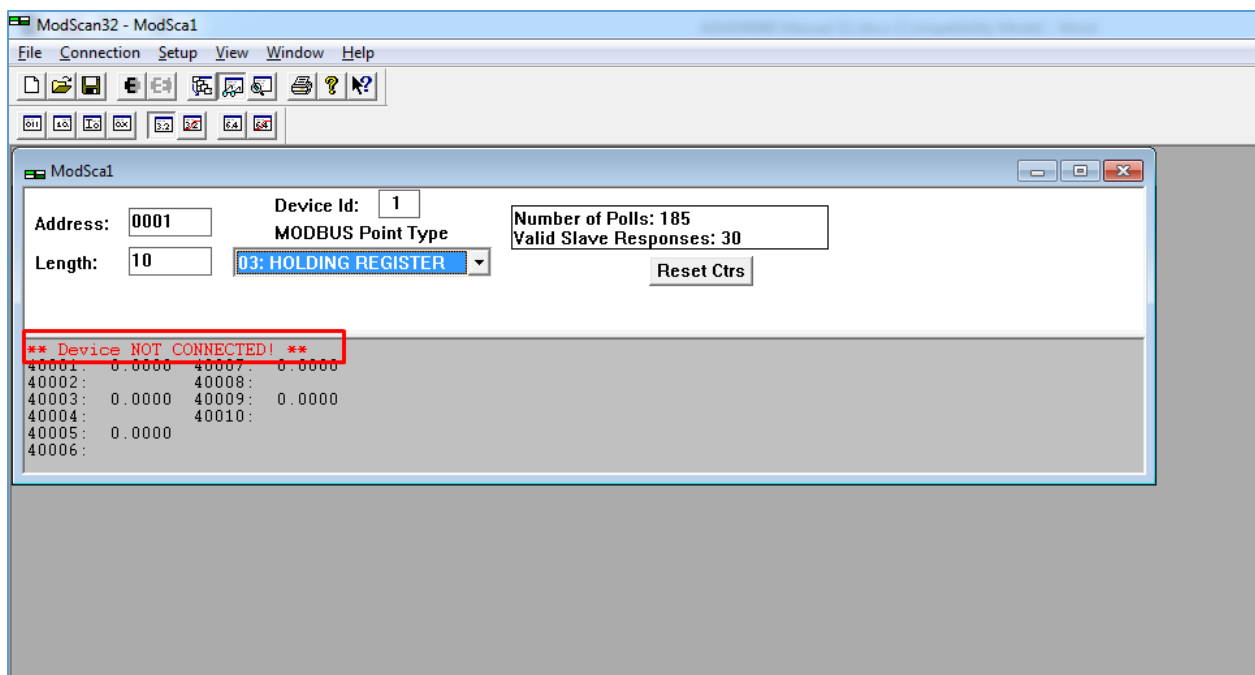
- Then default value of length is 100 and of MODBUS point type is “01: COIL STATUS”.



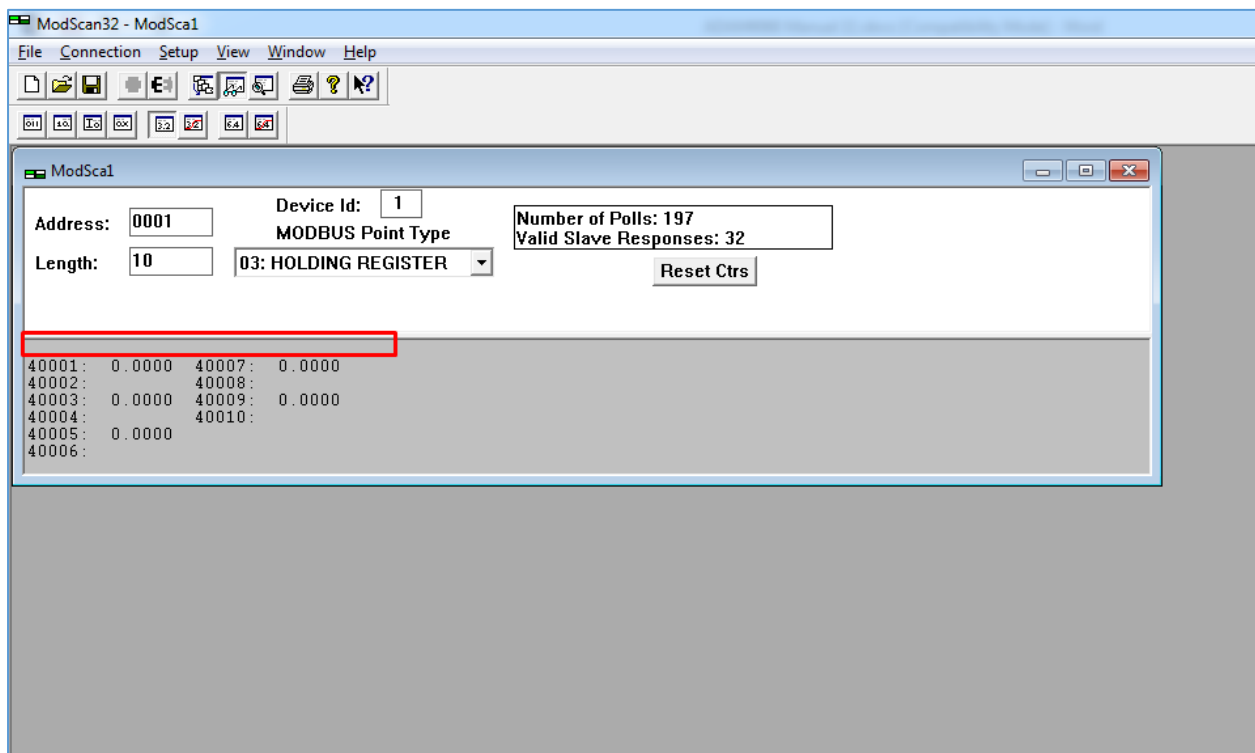
- So we have to **change value** of length is 100 to 10 and for MODBUS point type select 3 option from drop down “03: Holding Register”



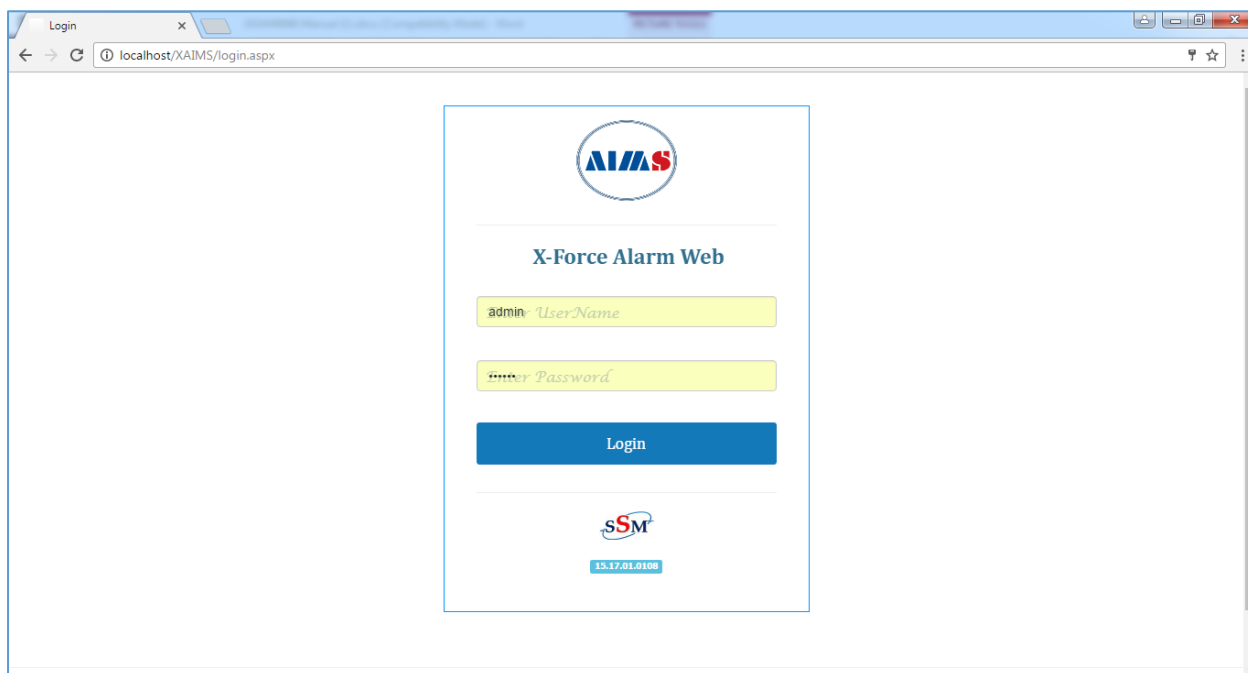
- See that there will no error like “Device Not Connected”. If that error comes that means your PLC is not connected properly



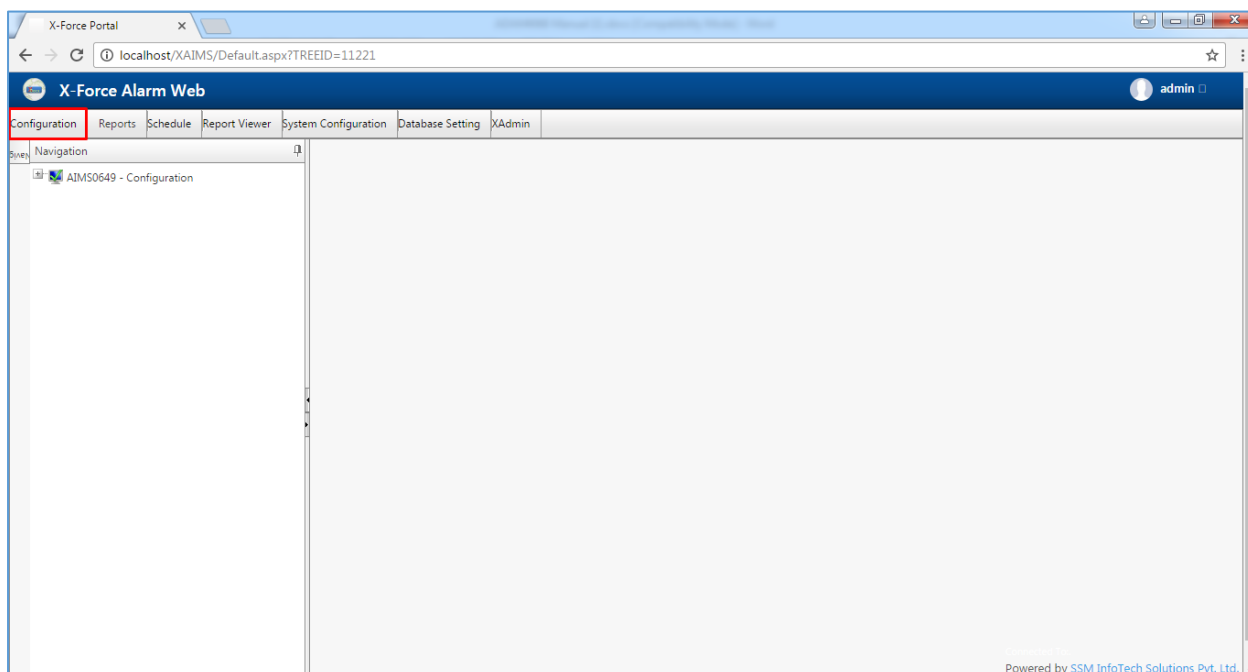
- If Device is connected properly no error will come.



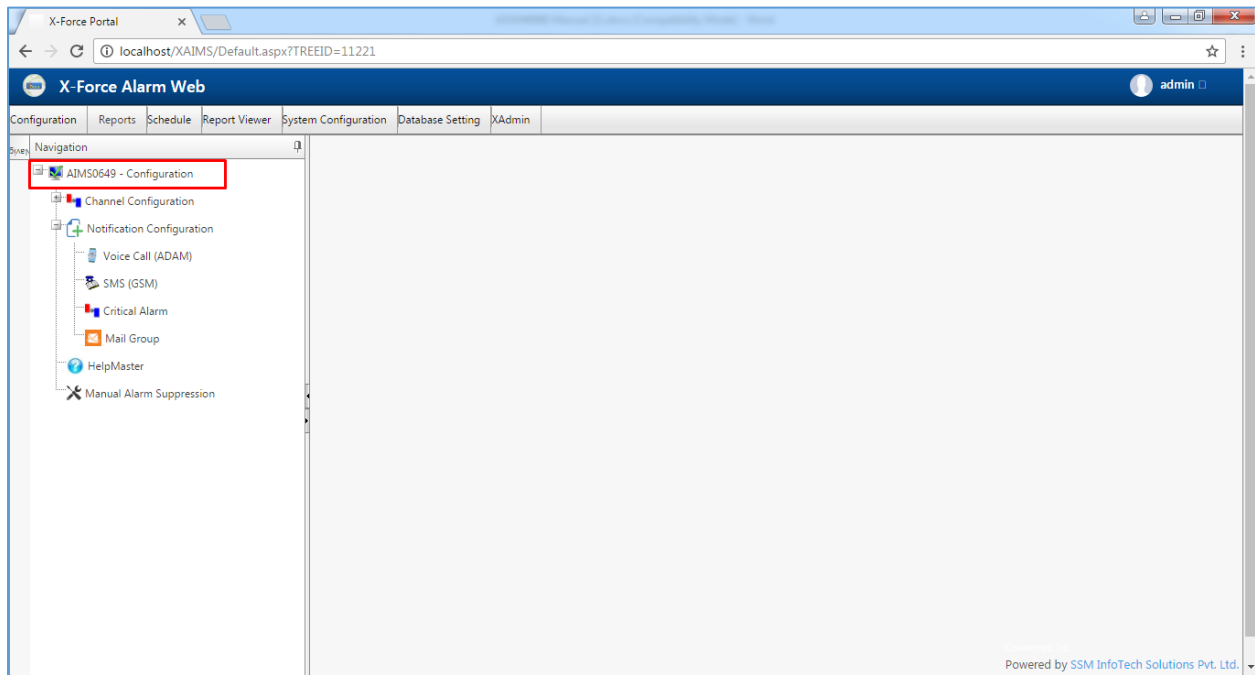
- Once PLC is Connected properly now to do configuration in X-Force Alarm Web Application of AIMS.
- Open X-Force Alarm Web Application.



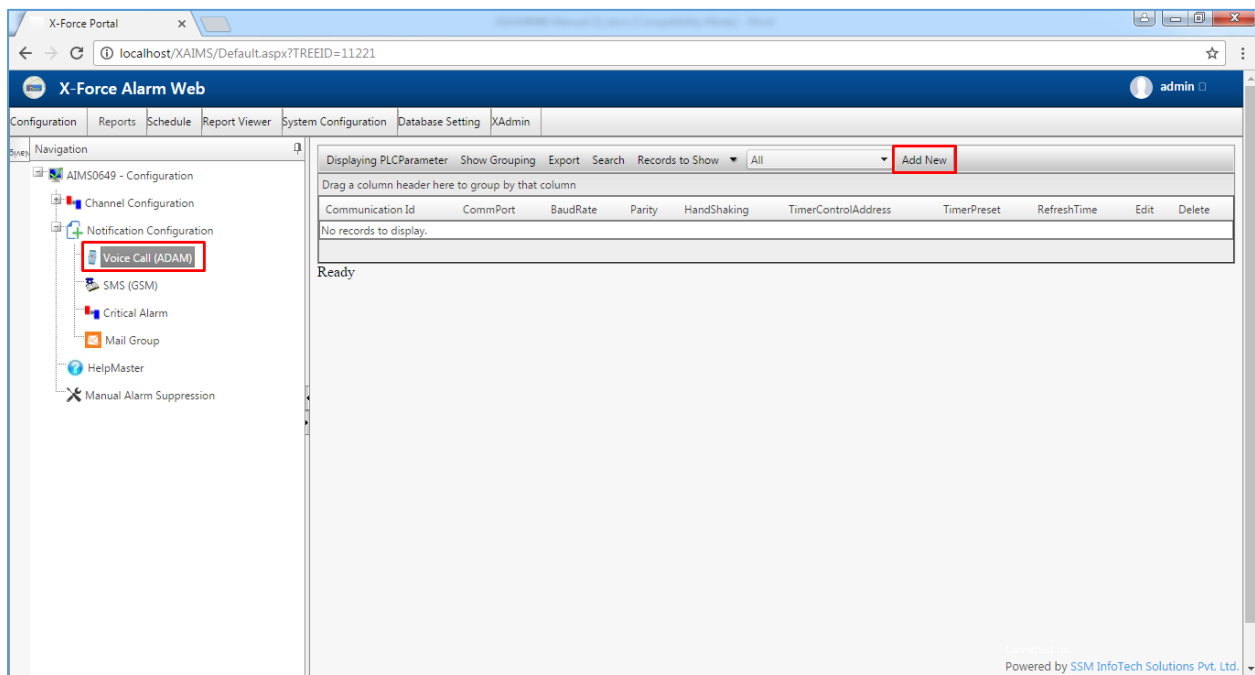
- Go to Configuration.



- Drop Down Configuration.



- Go to Voice Call (ADAM) and Click to Add New.



- Now select **Port** on which PLC is connected, make **Time control** to “Default” and make **Timer Present** “1000”

X-Force Portal

localhost/XAIMS/Default.aspx?TREEID=11221

X-Force Alarm Web admin

Configuration Reports Schedule Report Viewer System Configuration Database Setting XAdmin

Navigation

- AIMS0649 - Configuration
 - Channel Configuration
 - Notification Configuration
 - Voice Call (ADAM)
 - SMS (GSM)
 - Critical Alarm
 - Mail Group
 - HelpMaster
 - Manual Alarm Suppression

PLCParameter : New record

Save Cancel Save and Continue

Port No: 7

Timer Configuration :

Timer Control: Default Refresh Time: 0

Control Register: Timer Preset: 1000

General

Speed: 9600 Stop Bit: 1 Parity: None Flow Control: None Data Bit: 8

Hardware

Parity Replace: ? Discard Null: ☐ DTR Enable: ☒ RTS Enable: ☒

Buffers

Input Buffer Size: 1,024 Output Buffer Size: 512

Input Length: 1 EOF Enable: ☐ SThreshold: ☒ RThreshold: ☒

Add Device

Delete Selected Data

Powered by SSM InfoTech Solutions Pvt. Ltd.

- Slide down Window and you will get one other option "Add Device".

X-Force Portal

localhost/XAIMS/Default.aspx?TREEID=11221

X-Force Alarm Web admin

Configuration Reports Schedule Report Viewer System Configuration Database Setting XAdmin

Navigation

- AIMS0649 - Configuration
 - Channel Configuration
 - Notification Configuration
 - Voice Call (ADAM)
 - SMS (GSM)
 - Critical Alarm
 - Mail Group
 - HelpMaster
 - Manual Alarm Suppression

General

Speed: 9600 Stop Bit: 1 Parity: None Flow Control: None Data Bit: 8

Hardware

Parity Replace: ? Discard Null: ☐ DTR Enable: ☒ RTS Enable: ☒

Buffers

Input Buffer Size: 1,024 Output Buffer Size: 512

Input Length: 1 EOF Enable: ☐ SThreshold: ☒ RThreshold: ☒

Add Device

Delete Selected Data

+ Add new record Refresh

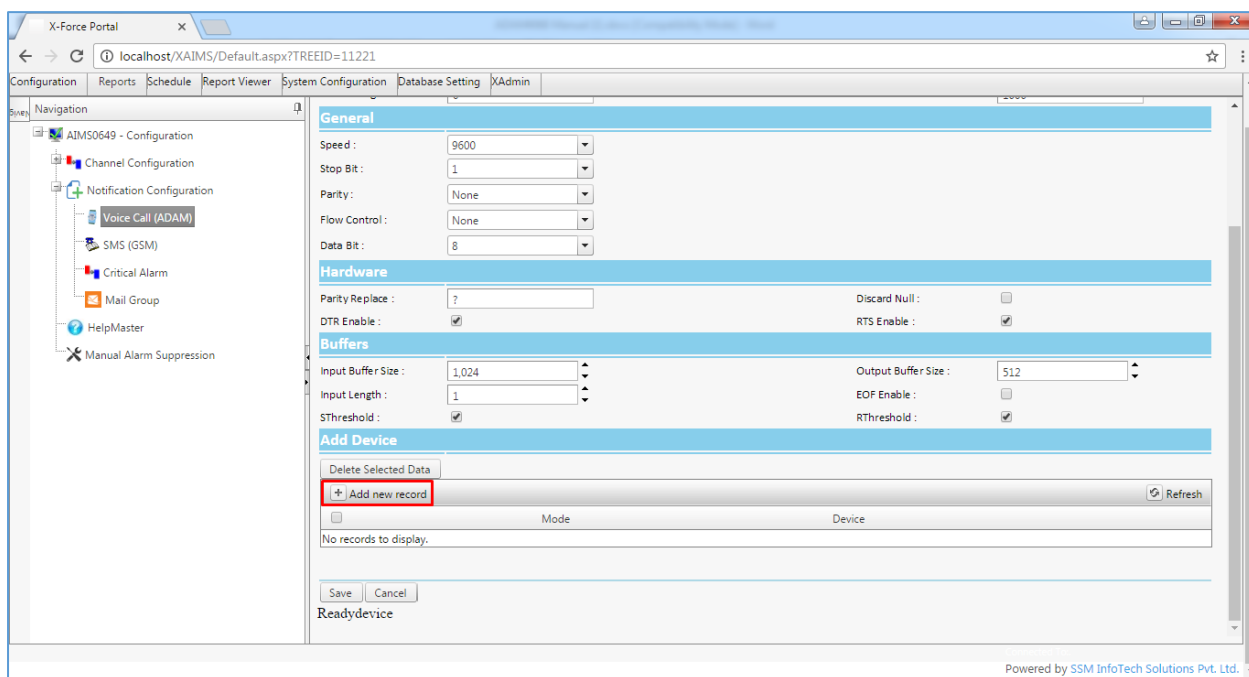
No records to display.

Save Cancel

Readydevice

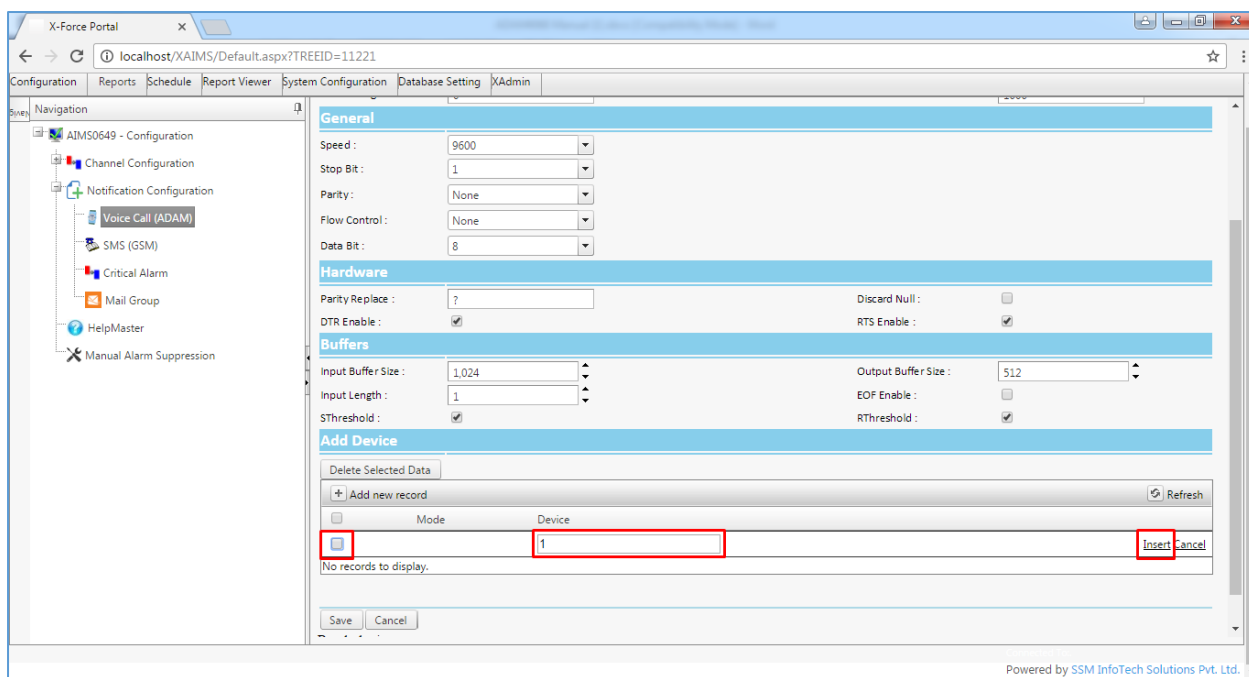
Powered by SSM InfoTech Solutions Pvt. Ltd.

- Now click “ + Add New Device ” to add new device .



The screenshot shows the 'X-Force Portal' interface. On the left is a navigation tree with options like 'AIMS0649 - Configuration', 'Channel Configuration', 'Notification Configuration', 'Voice Call (ADAM)', 'SMS (GSM)', 'Critical Alarm', 'Mail Group', 'HelpMaster', and 'Manual Alarm Suppression'. The main area is titled 'Add Device' and contains several sections: 'General' (Speed: 9600, Stop Bit: 1, Parity: None, Flow Control: None, Data Bit: 8), 'Hardware' (Parity Replace: ?, DTR Enable: checked, Discard Null: unchecked, RTS Enable: checked), and 'Buffers' (Input Buffer Size: 1,024, Input Length: 1, SThreshold: checked, Output Buffer Size: 512, EOF Enable: unchecked, RThreshold: checked). At the bottom, there is a table with columns 'Mode' and 'Device'. Below the table, the text 'No records to display.' is shown. A red box highlights the '+ Add new record' button. Other buttons include 'Delete Selected Data', 'Refresh', 'Save', and 'Cancel'.

- Fill the Textbox of Device “1” and make checkmark and click on insert



This screenshot shows the same 'Add Device' form as the previous one, but with the 'Device' text box in the table filled with the number '1'. A red box highlights the 'insert' button. The 'Mode' checkbox is also highlighted with a red box. The 'Add new record' button is no longer highlighted. The rest of the form and navigation tree remain the same.

- Output will be like below Image

X-Force Portal

localhost/XAIMS/Default.aspx?TREEID=11221

Configuration Reports Schedule Report Viewer System Configuration Database Setting XAdmin

Navigation

- AIMS0649 - Configuration
 - Channel Configuration
 - Notification Configuration
 - Voice Call (ADAM)
 - SMS (GSM)
 - Critical Alarm
 - Mail Group
 - HelpMaster
 - Manual Alarm Suppression

General

Speed : 9600
Stop Bit : 1
Parity : None
Flow Control : None
Data Bit : 8

Hardware

Parity Replace : ? Discard Null : ☐
DTR Enable : ☒ RTS Enable : ☒

Buffers

Input Buffer Size : 1,024 Output Buffer Size : 512
Input Length : 1 EOF Enable : ☐
SThreshold : ☒ RThreshold : ☒

Add Device

Delete Selected Data

+ Add new record Refresh

	Mode	Device	
<input type="checkbox"/>	I	1	Delete Edit

Save Cancel

Readydevicedevice

Powered by SSM InfoTech Solutions Pvt. Ltd.

- Now Do checkmark and click on SAVE.

X-Force Portal

localhost/XAIMS/Default.aspx?TREEID=11221

Configuration Reports Schedule Report Viewer System Configuration Database Setting XAdmin

Navigation

- AIMS0649 - Configuration
 - Channel Configuration
 - Notification Configuration
 - Voice Call (ADAM)
 - SMS (GSM)
 - Critical Alarm
 - Mail Group
 - HelpMaster
 - Manual Alarm Suppression

General

Speed : 9600
Stop Bit : 1
Parity : None
Flow Control : None
Data Bit : 8

Hardware

Parity Replace : ? Discard Null : ☐
DTR Enable : ☒ RTS Enable : ☒

Buffers

Input Buffer Size : 1,024 Output Buffer Size : 512
Input Length : 1 EOF Enable : ☐
SThreshold : ☒ RThreshold : ☒

Add Device

Delete Selected Data

+ Add new record Refresh

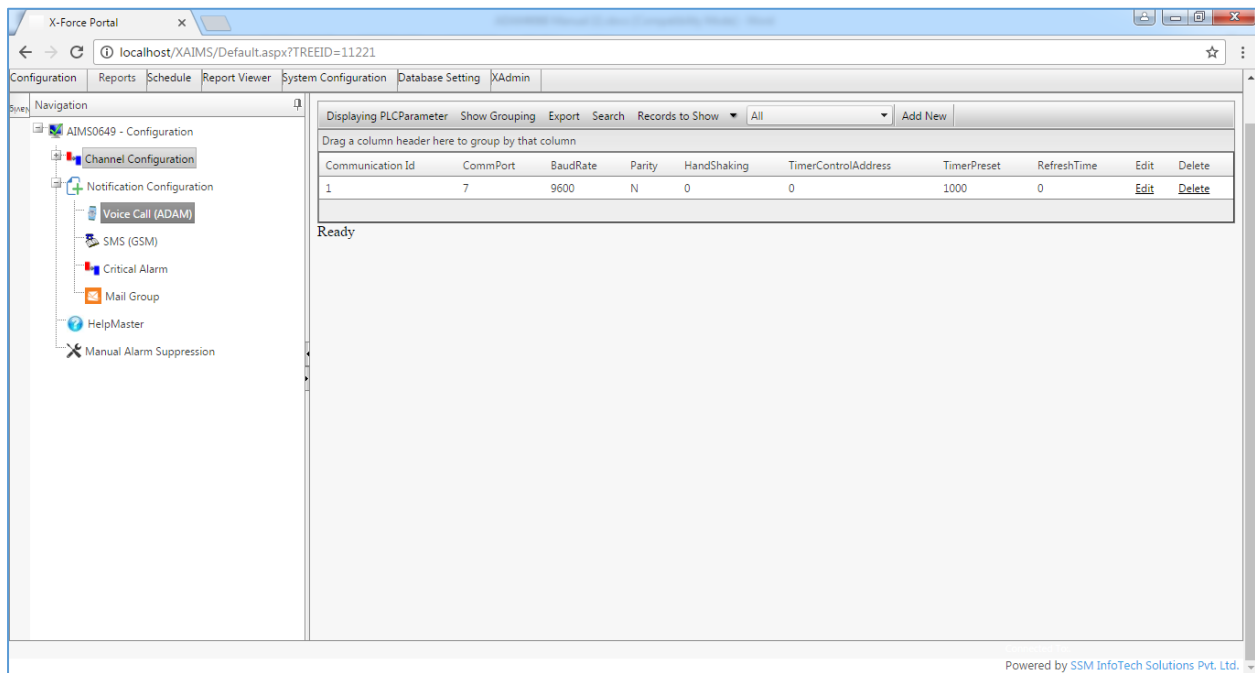
	Mode	Device	
<input checked="" type="checkbox"/>	I	1	Delete Edit

Save Cancel

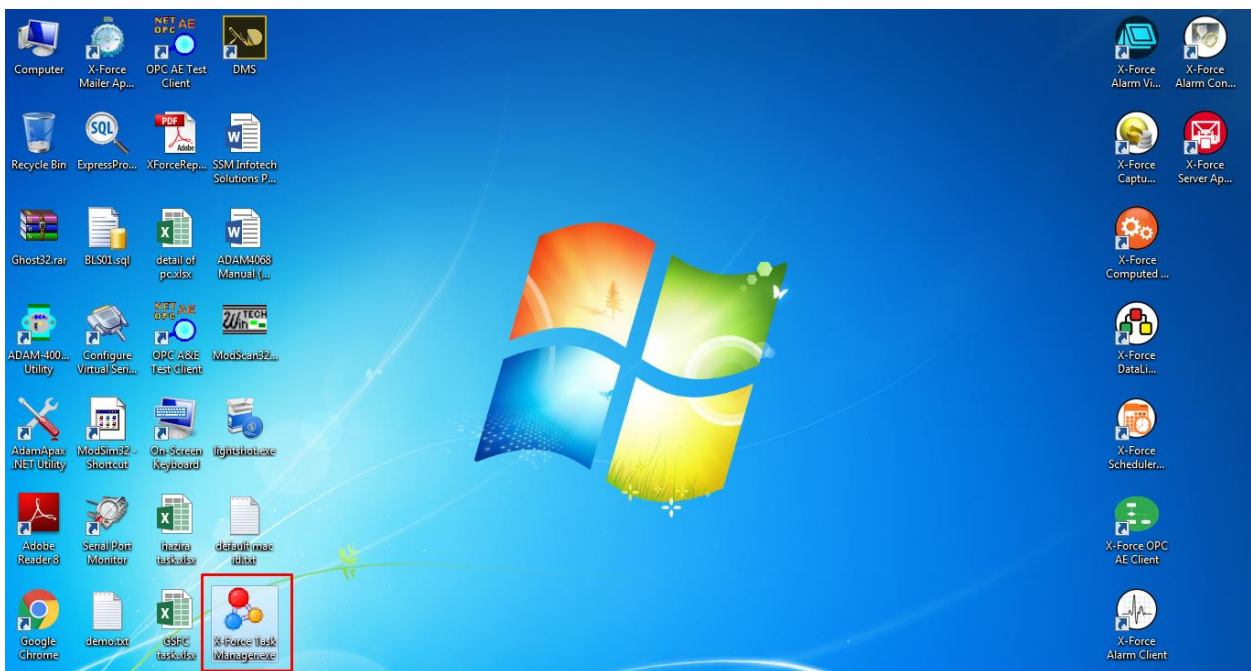
Readydevicedevice

Powered by SSM InfoTech Solutions Pvt. Ltd.

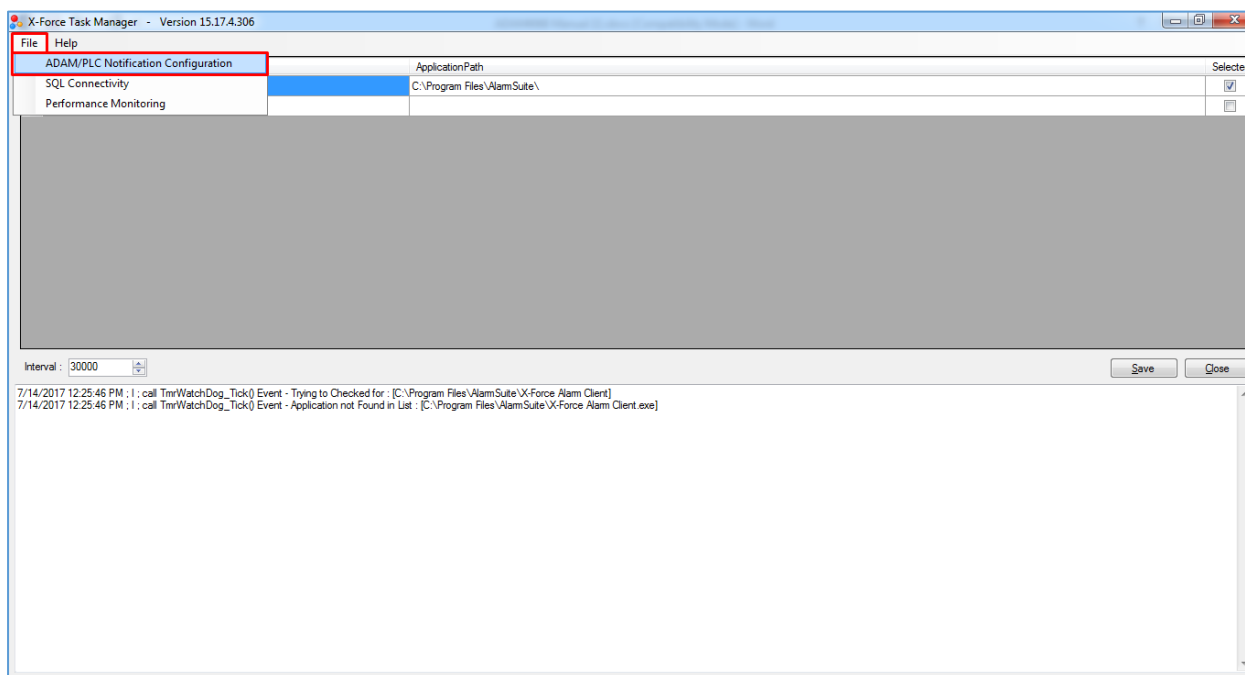
- Output will be like below image.



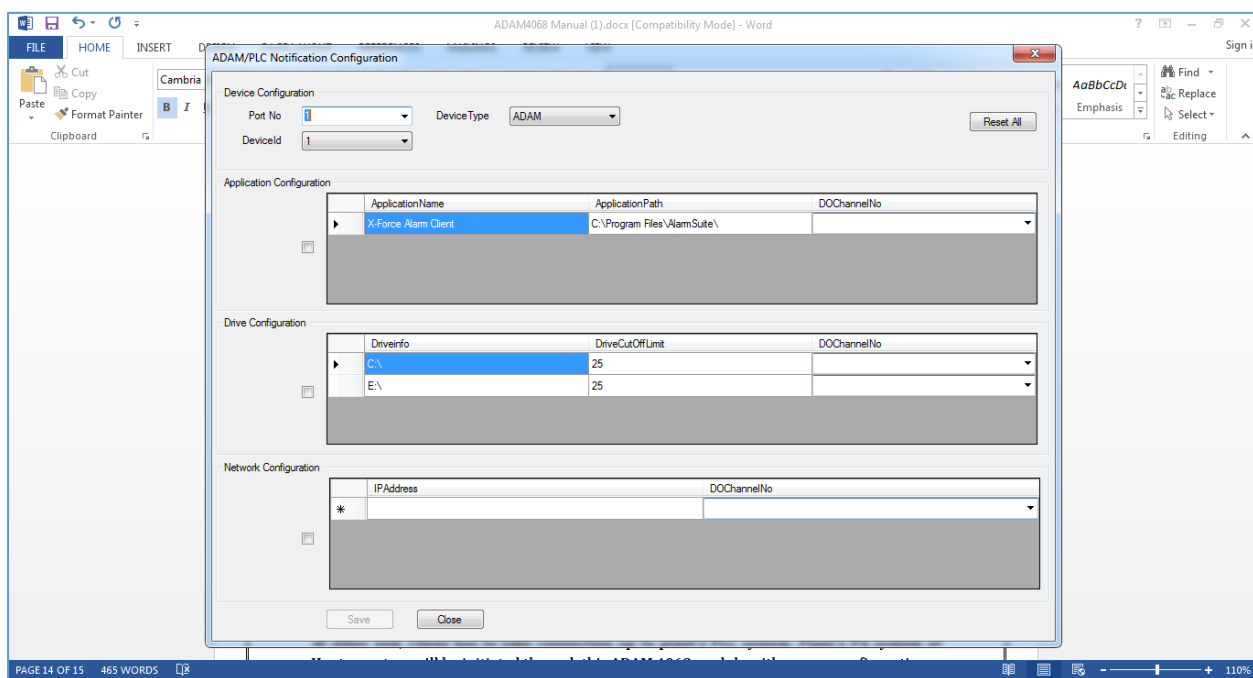
- Now Open X-Force Task Manager for configuration.
- Double Click on X-Force Task Manager on Desktop.



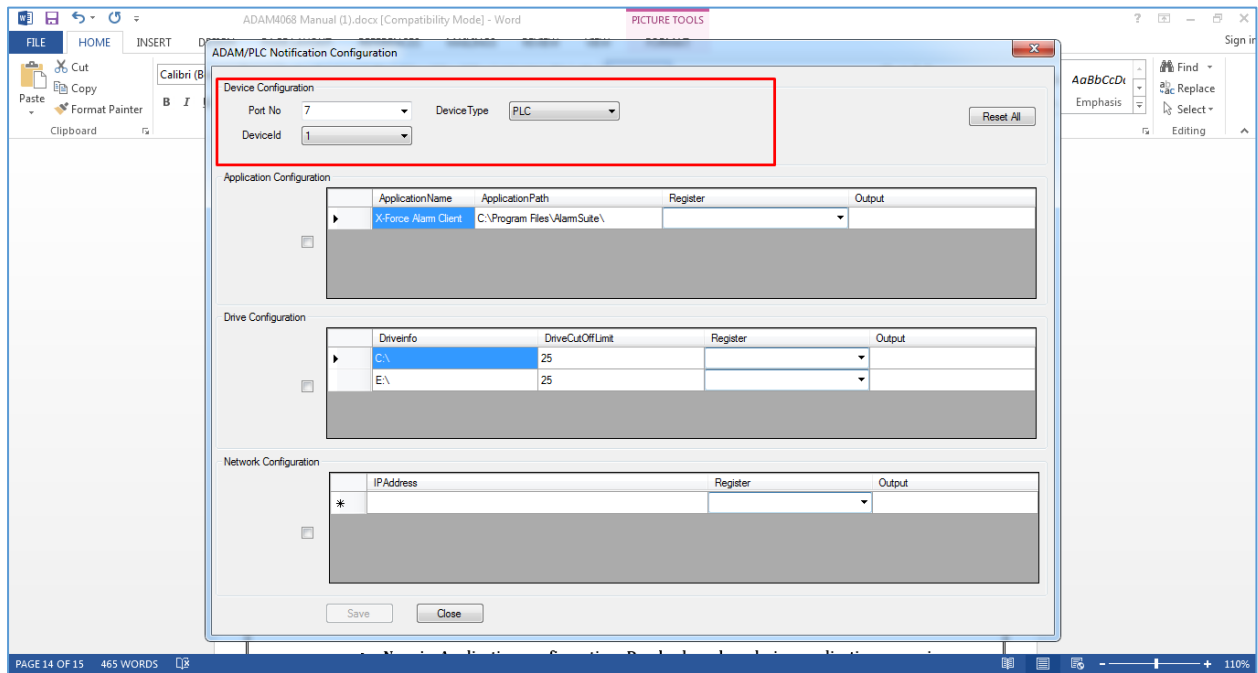
- Now click on "File" and click "ADAM/PLC Notification Configuration".



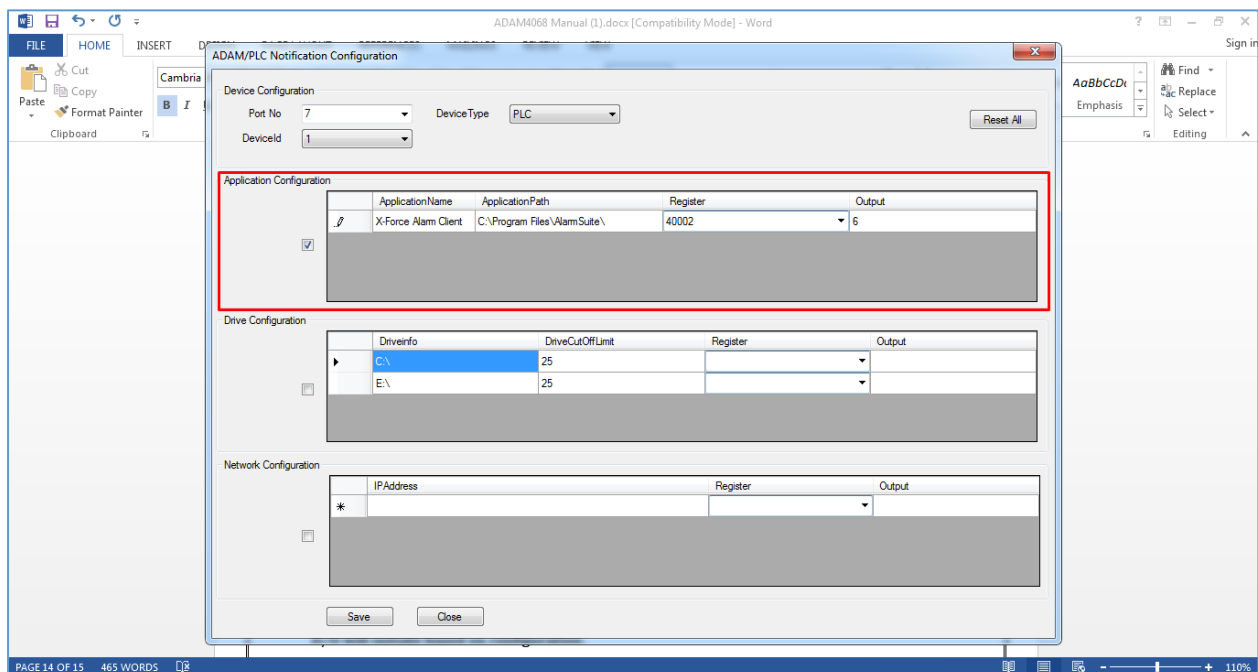
- One window will open like below image.



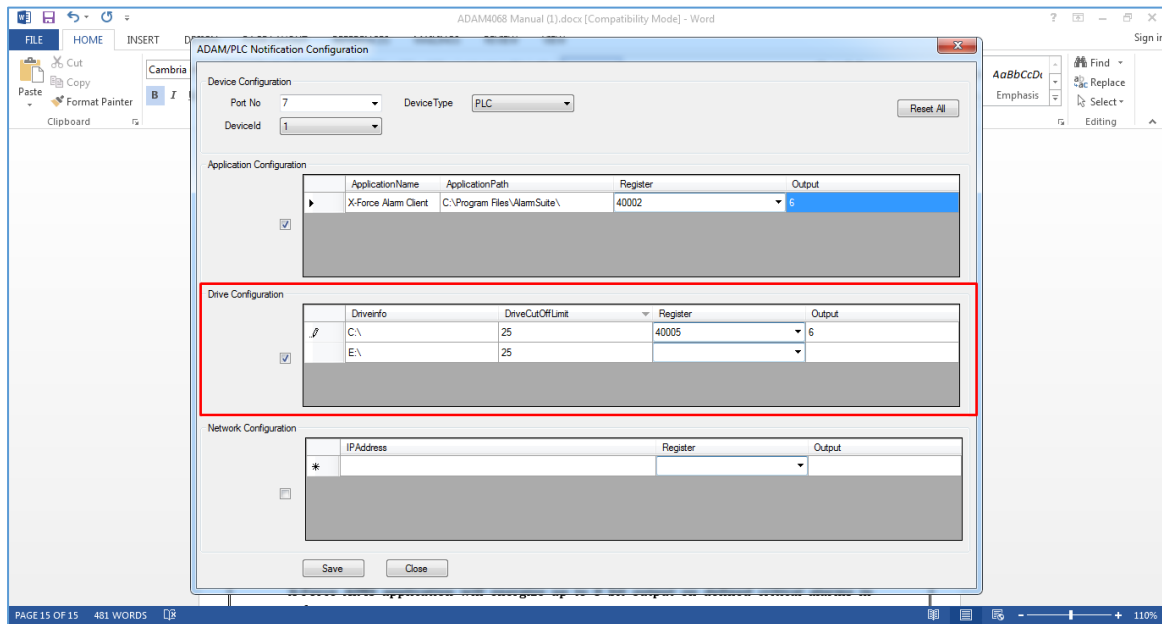
- Now in Device Configuration select “PORT” on which PLC Connected, Select “DEVICE TYPE” to “PLC” and select DeviceID “1” (**Note : Select DeviceID for PLC is always “1”**)



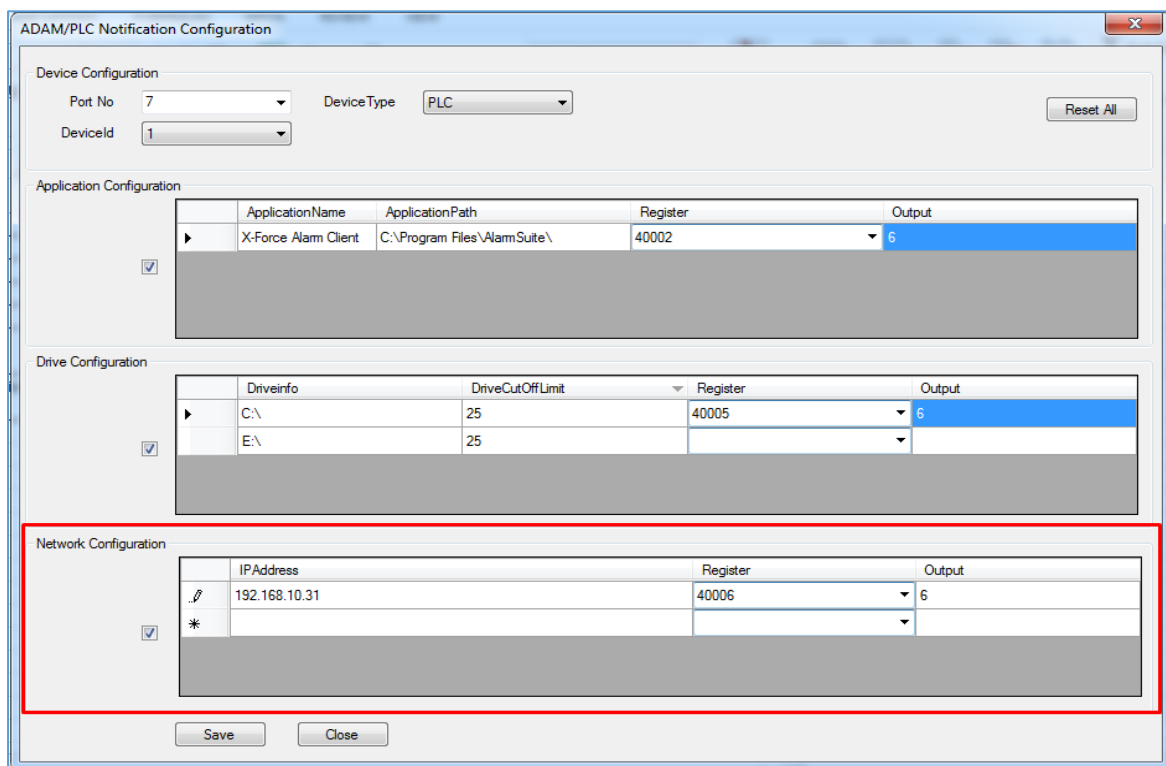
- Now in Application configuration. Do checkmark and give application name in “Application Name”, Give path of Application location in “Application Path”, Give Register “40002” and Give Output “6”.



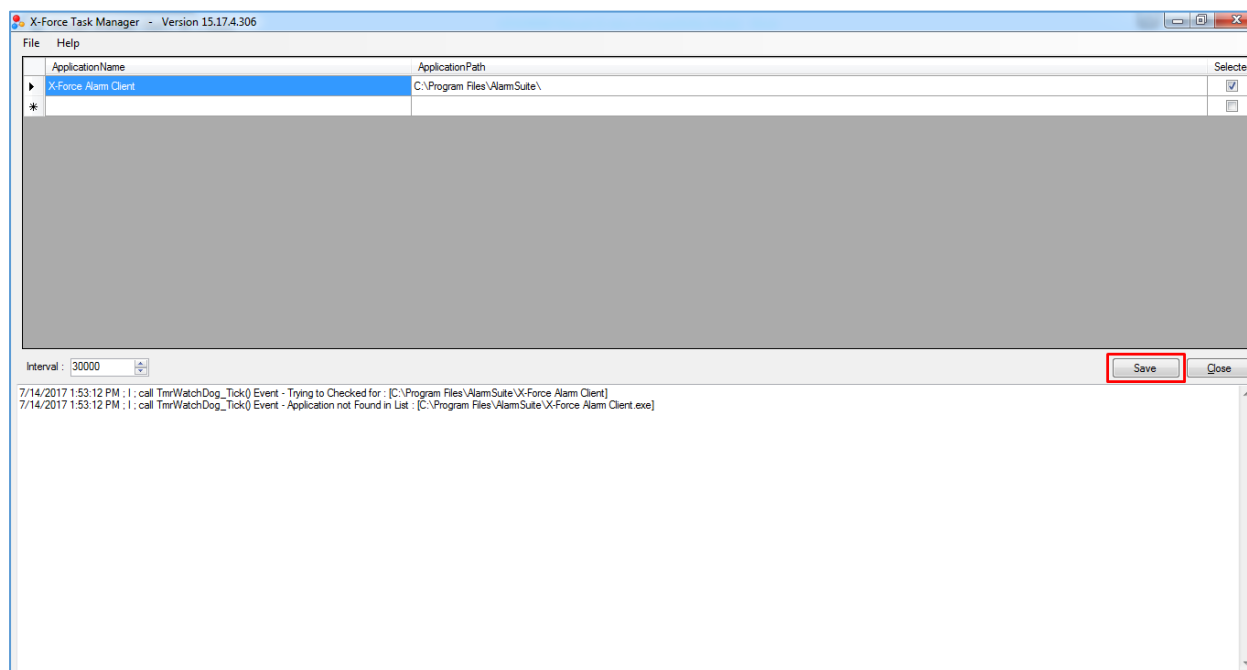
- Now in Drive configuration. Do checkmark and give “DriveCutOffLimit”, Give Register “40005” and Give Output “6”.



- Now in Network configuration. Do checkmark and give IP Address in "IPAddress", Give Register "40006" and Give Output "6". Save it.



- After that again click on save.



After that,

NOTE: To Generate Bit in PLC, X-Force Task Manager and X-Force Computed Application should be running in background and If Computed Application is not running then light will glow on LED No. 5.

1 For Application Crash:

When any Application is been crashed or closed than Bit is generated on in PLC and Light will glow on LED No.6

2. For Disk Full:

When any Drive of PC will be filled more than given value in Task Manager Configuration than light will glow on LED No 8.

3. For Network Failure:

When Network get disconnected or stopped by some reason than light will glow in LED No.9.

END OF THE DOCUMENT

