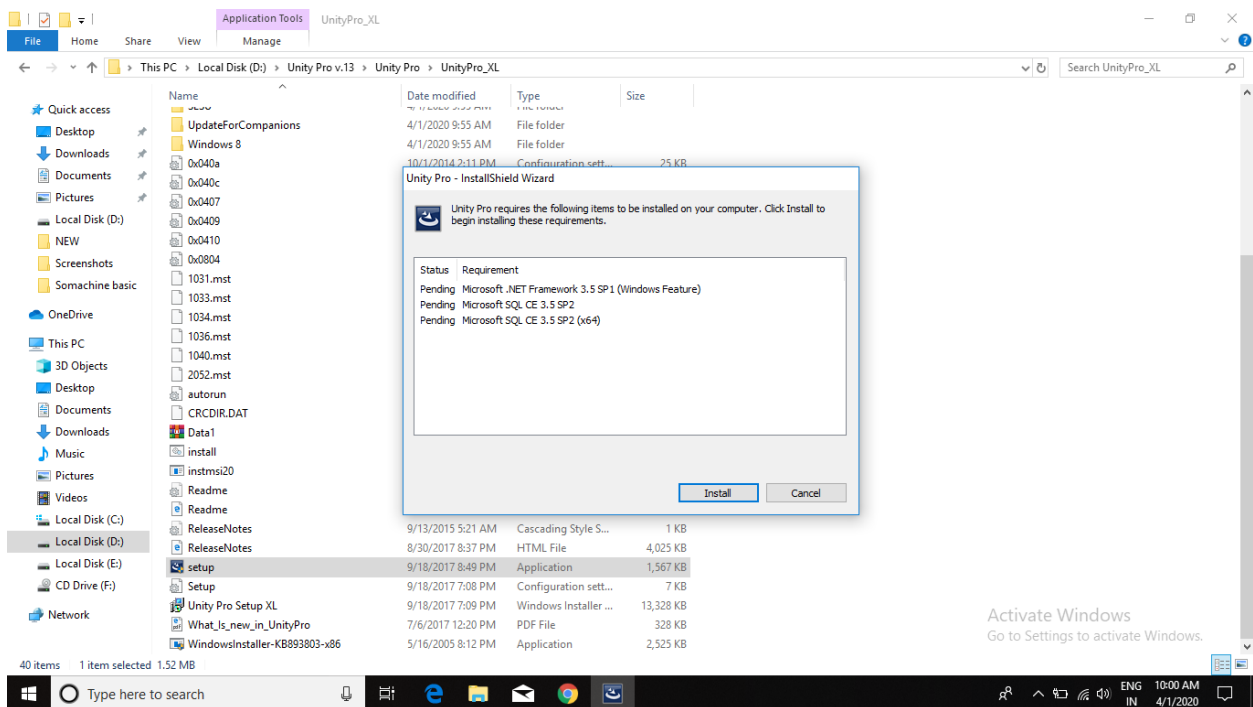


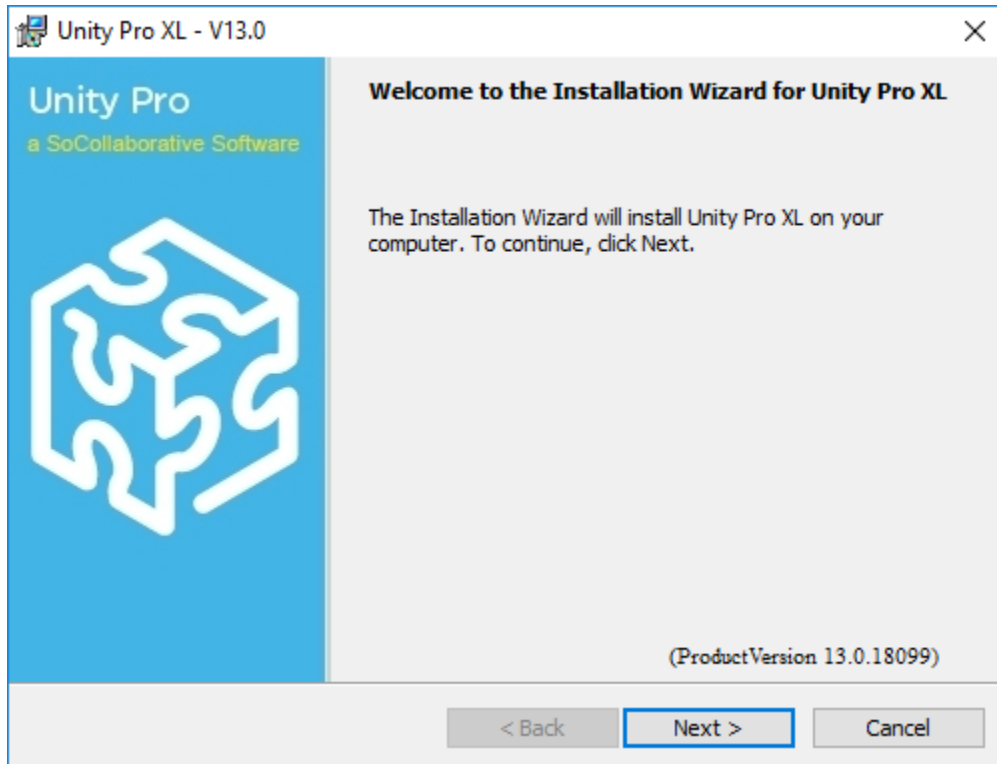
Unity Pro XL Installation

- Follow below procedure for the Unity Pro XL V.13 Software installation.
- As per below attached image Double Click on **Setup.exe**.
- Click on Install button.
- Wait for the installation of the **Microsoft .NET Framework 3.5 SP1**.
- If you have to do faster installation, Simply download **Microsoft .NET Framework 3.5 SP1** and install manually
- Unity Pro directly going to forward installation.



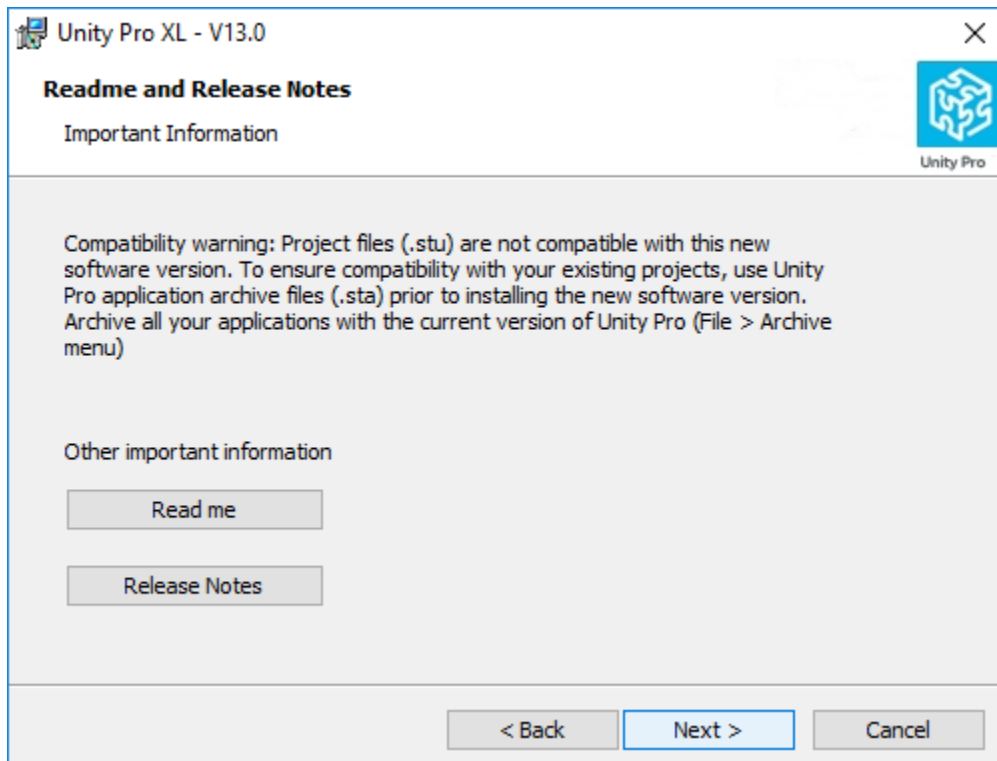
Unity Pro XI V.13 Installation

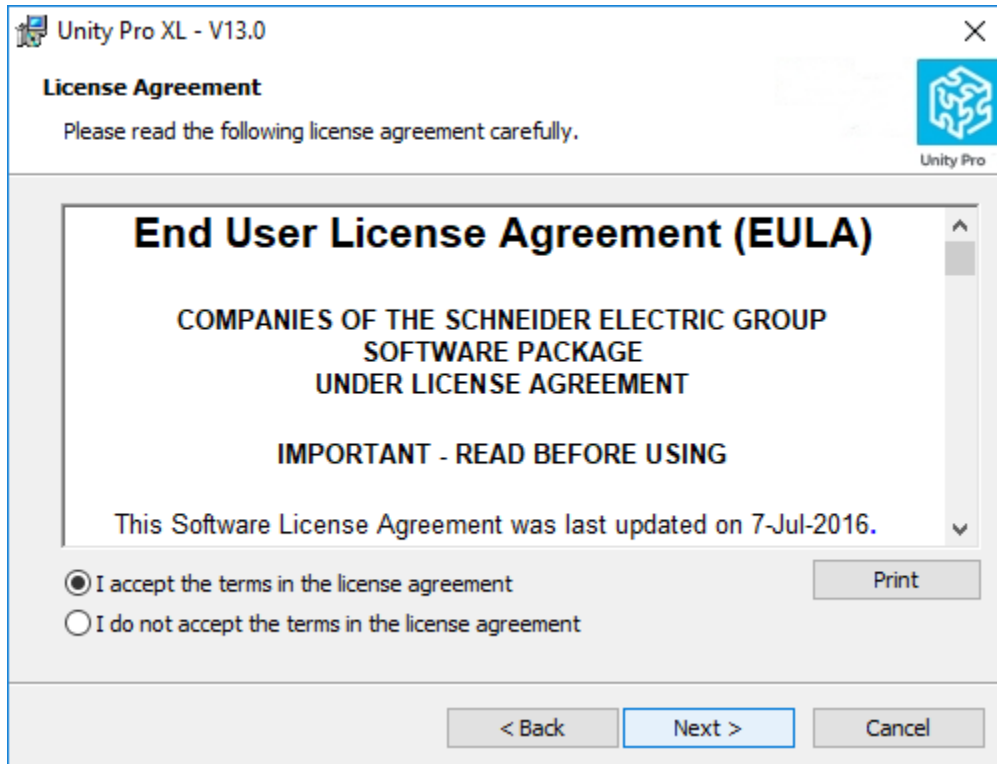
- See below image and Follow further procedure.



Unity Pro XL Installation

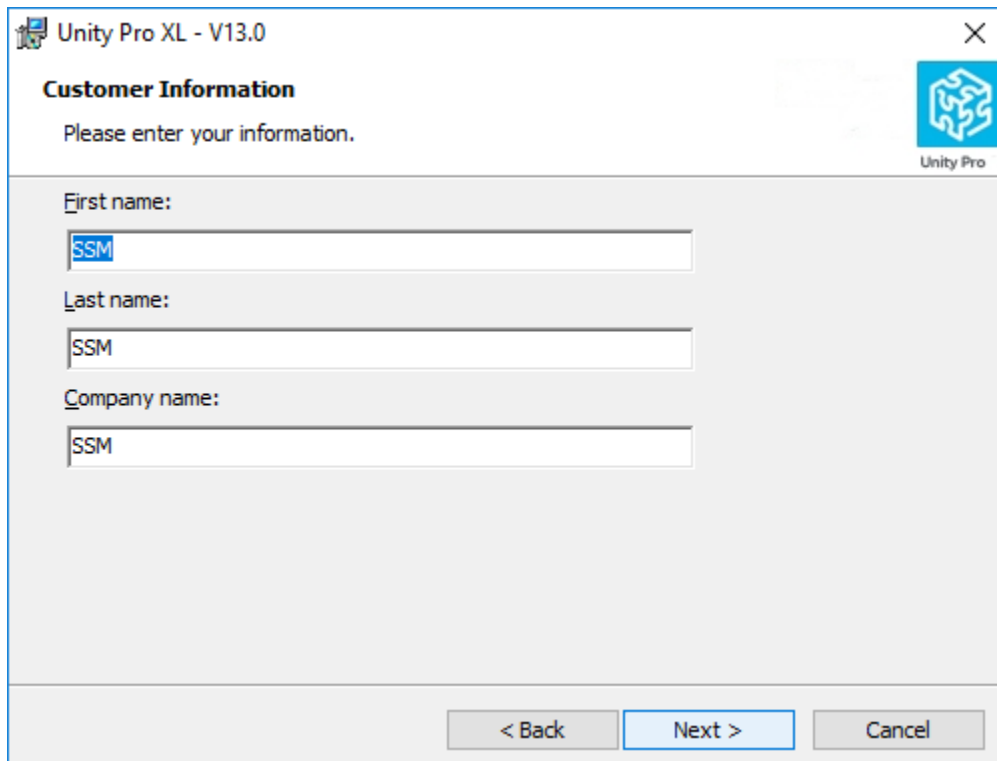
- Click on Next button.



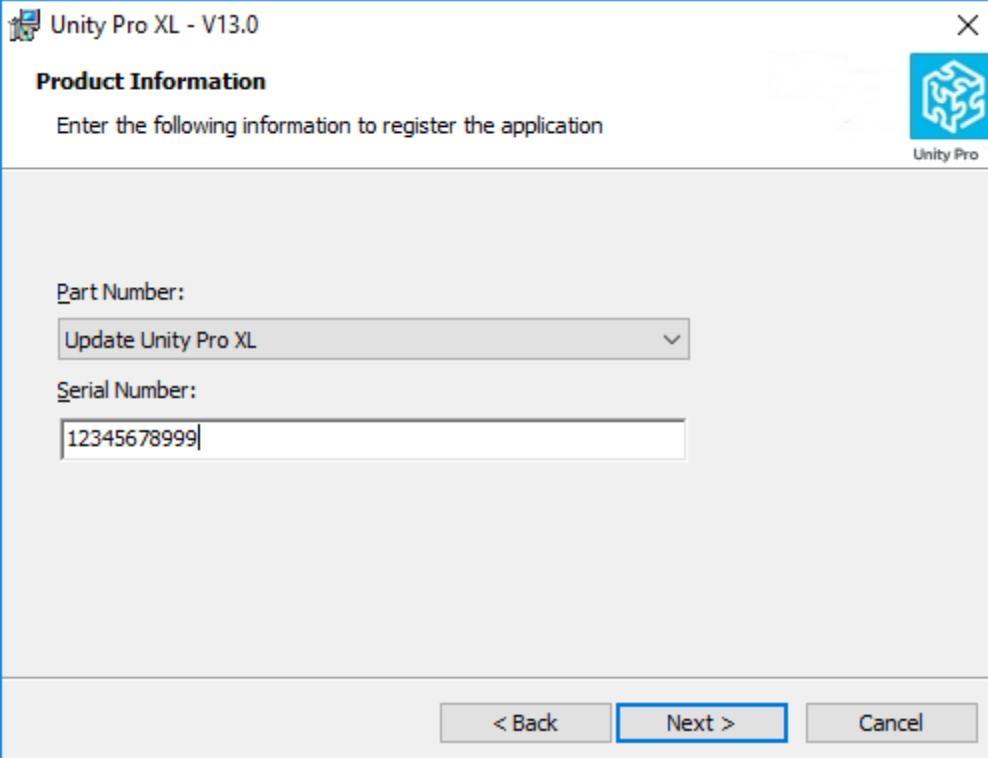


Unity Pro XL Installation Procedure

- Click on Next Button.



- Here fill details of the Customer which have purchased license.
- Click on Next Button.



Unity Pro XL - V13.0

Product Information

Enter the following information to register the application

Part Number:

Update Unity Pro XL

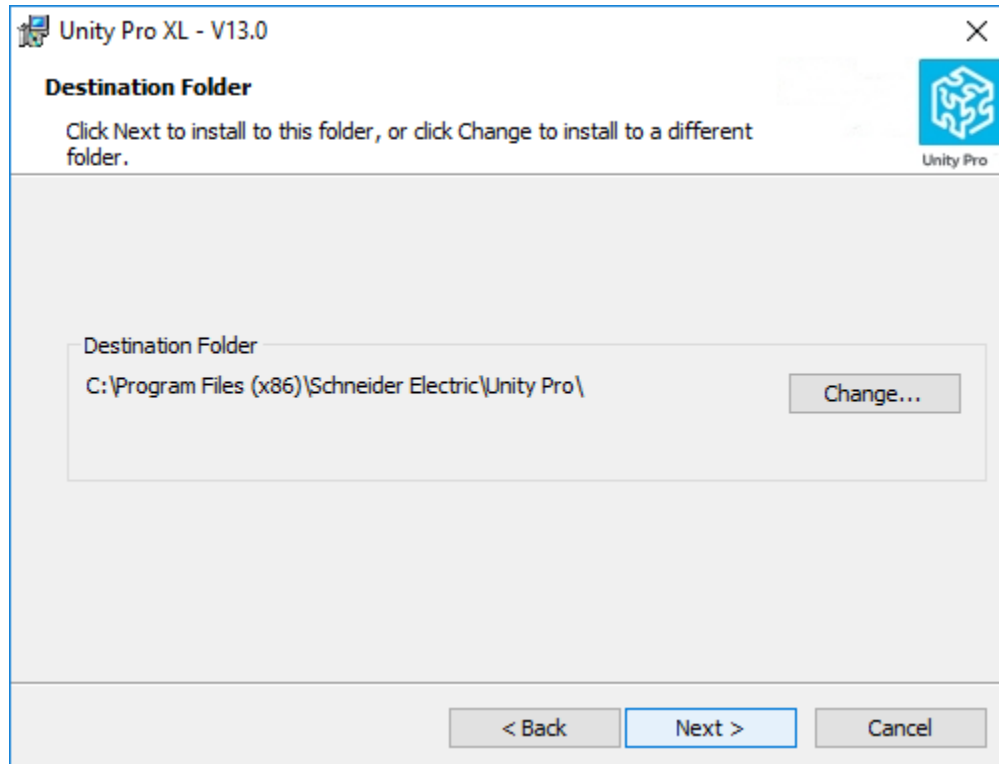
Serial Number:

12345678999

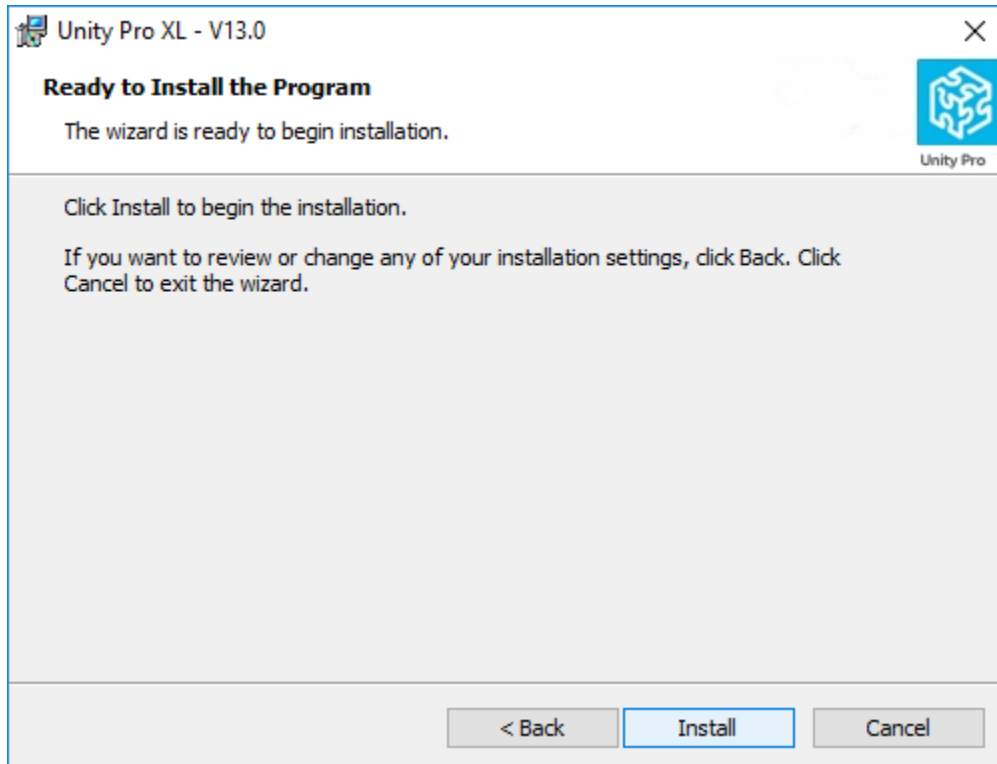
< Back Next > Cancel

Part number and Serial Number Selection

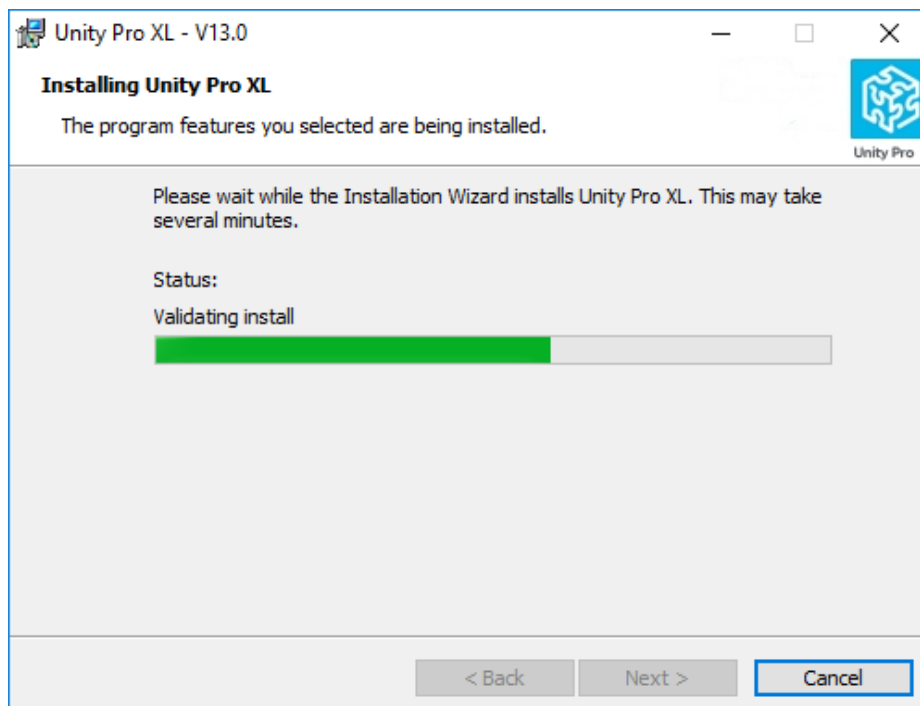
- Find Part number and Serial number in purchase license CD.
- Click on Next button.
- Select Typical or Custom installation
- Click on Next Button.



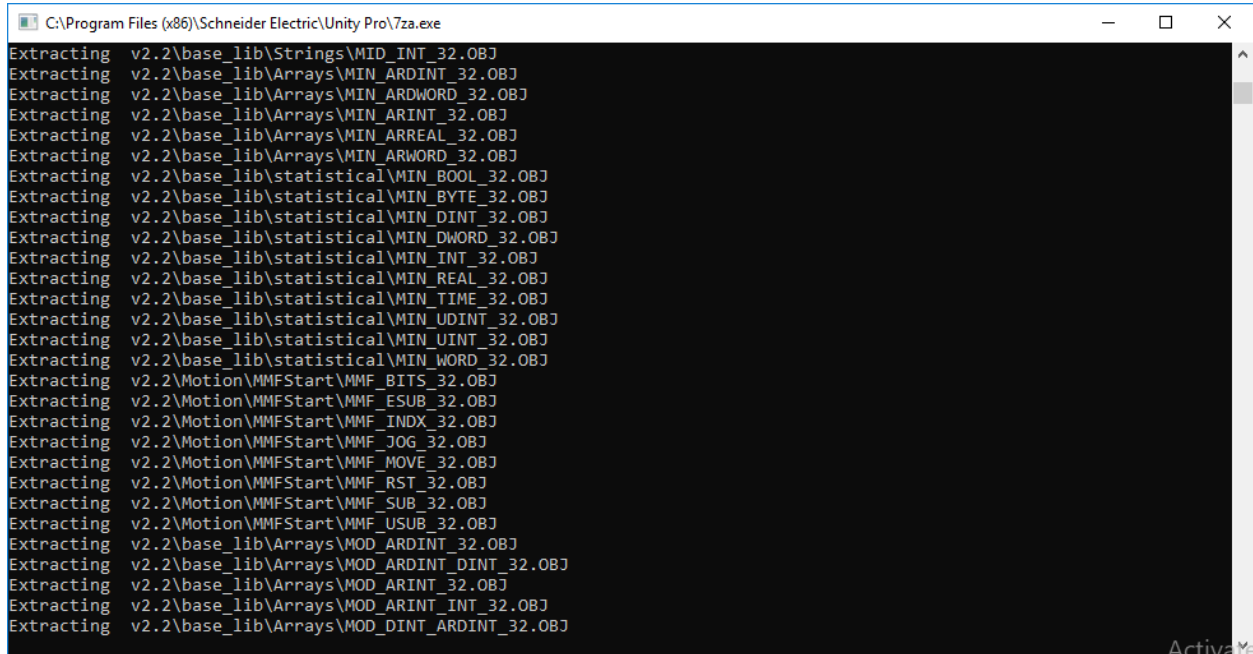
- **Go to Next**
- **Select Communication Drivers**
 1. **USB**
 2. **Unitelway**
 3. **Modbus**
- Here, you have get selection for the installation of the Modbus, Unitelway and USB Driver. If you want to install Click on the Check Box and Go to Next for the further process.
- **After Selection of that Click on Next.**



- Click on Next button and Follow below finalize Installation button.
- After all the selection you have get the Install button, Click on that and wait for the successfully installation.



- Wait for the installation.



```
C:\Program Files (x86)\Schneider Electric\Unity Pro\7za.exe
Extracting v2.2\base_lib\Strings\MID_INT_32.OBJ
Extracting v2.2\base_lib\Arrays\MIN_ARDINT_32.OBJ
Extracting v2.2\base_lib\Arrays\MIN_ARDWORD_32.OBJ
Extracting v2.2\base_lib\Arrays\MIN_ARINT_32.OBJ
Extracting v2.2\base_lib\Arrays\MIN_ARREAL_32.OBJ
Extracting v2.2\base_lib\Arrays\MIN_ARWORD_32.OBJ
Extracting v2.2\base_lib\statistical\MIN_BOOL_32.OBJ
Extracting v2.2\base_lib\statistical\MIN_BYTE_32.OBJ
Extracting v2.2\base_lib\statistical\MIN_DINT_32.OBJ
Extracting v2.2\base_lib\statistical\MIN_DWORD_32.OBJ
Extracting v2.2\base_lib\statistical\MIN_INT_32.OBJ
Extracting v2.2\base_lib\statistical\MIN_REAL_32.OBJ
Extracting v2.2\base_lib\statistical\MIN_TIME_32.OBJ
Extracting v2.2\base_lib\statistical\MIN_UDINT_32.OBJ
Extracting v2.2\base_lib\statistical\MIN_UINT_32.OBJ
Extracting v2.2\base_lib\statistical\MIN_WORD_32.OBJ
Extracting v2.2\Motion\MMFStart\MMF_BITS_32.OBJ
Extracting v2.2\Motion\MMFStart\MMF_ESUB_32.OBJ
Extracting v2.2\Motion\MMFStart\MMF_INDX_32.OBJ
Extracting v2.2\Motion\MMFStart\MMF_JOG_32.OBJ
Extracting v2.2\Motion\MMFStart\MMF_MOVE_32.OBJ
Extracting v2.2\Motion\MMFStart\MMF_RST_32.OBJ
Extracting v2.2\Motion\MMFStart\MMF_SUB_32.OBJ
Extracting v2.2\Motion\MMFStart\MMF_USUB_32.OBJ
Extracting v2.2\base_lib\Arrays\MOD_ARDINT_32.OBJ
Extracting v2.2\base_lib\Arrays\MOD_ARDINT_DINT_32.OBJ
Extracting v2.2\base_lib\Arrays\MOD_ARINT_32.OBJ
Extracting v2.2\base_lib\Arrays\MOD_ARINT_INT_32.OBJ
Extracting v2.2\base_lib\Arrays\MOD_DINT_ARDINT_32.OBJ
```

- Here, Unity Pro XI all the Version installed internally.
- After Completion this process.
- Installation done Successfully.
- Double Click on Unity Pro XI Symbol and Open that.
- Here, you get registration Wizard and register licensing process.
- After Registration license you can able to open Unity Pro XL.
- Installation done successfully.