

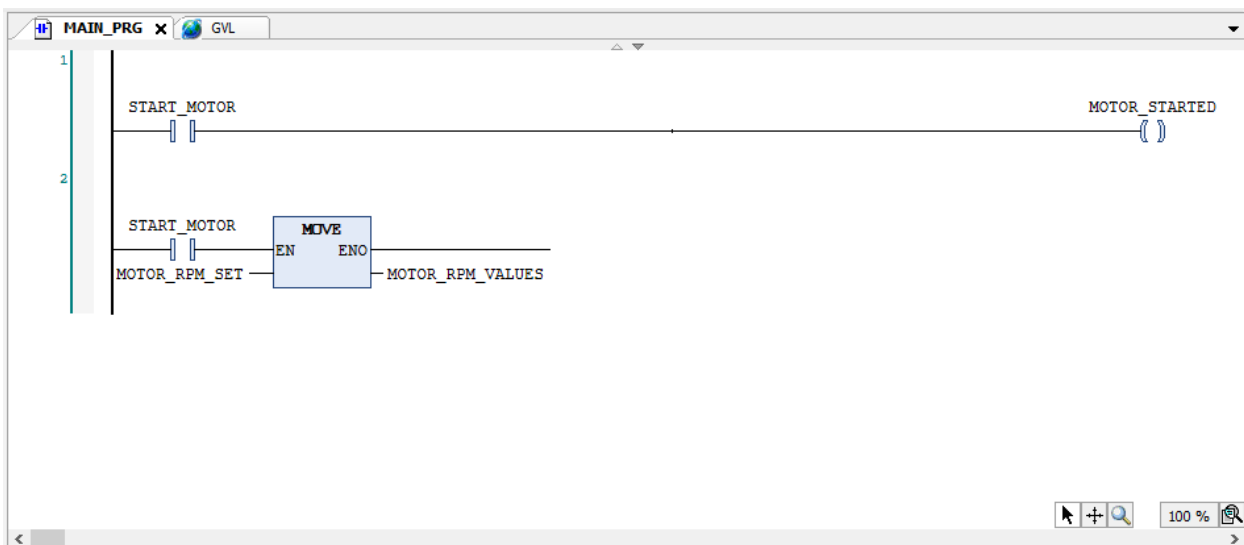
SoMachine V4.3 OPC-DA Configuration

Introduction :

- If you want to communicate your **PLC logic with SCADA**, Follow further procedure and do as well.
- Follow below procedure,
- InTouch SCADA cannot be able to write Boolean values in SoMachine V4.3 but it can be able to read that.
- This problems have only one solution, Use OPC DA protocol for the communication.
- First Install SoMachine V4.1 or V4.2 or V4.3 any one, Check marks all the tools while installation.

Step 1 :

- **Create PLC Program as you have require in the SoMachine V4.3.**



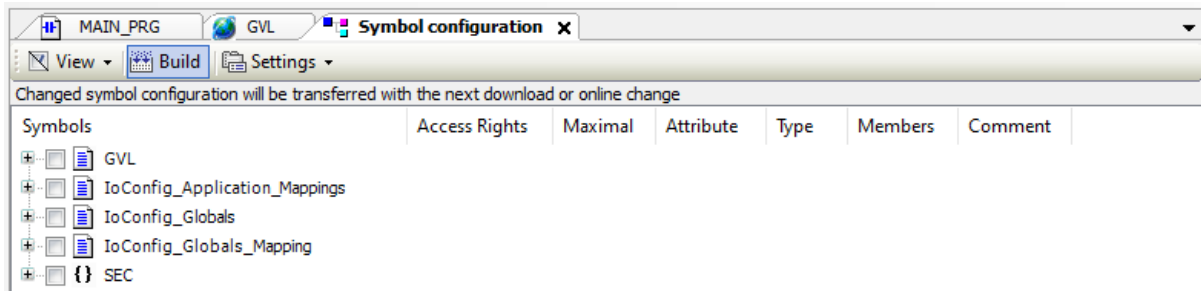
SoMachine V4.3 Sample PLC Program

- Write PLC Logic first in SoMachine V4.3.
- Here I have created a simple program to help you better understand this.
- Also I have given information of the require configuration in SCADA as well as PLC.
- Follow further procedure for the communication.

Step 2 :

- **Create Symbol Configuration in SoMachine V4.3.**

- Go to Tools Tree and Add Symbol Configuration.
- Double click on added symbol configuration.
- Build Symbol Configuration



Symbol Configuration

Step 3 :

- **Select Variable List**

- Select Variable list where you have configure all the variable for the data transfer.
- Basically Global variable List used.
- I have select Global Variable List and Build that.
- Build Symbol Configuration.
- Download Program in the Controller.

Step 4 :

- **OPC Configuration in SoMachine.**

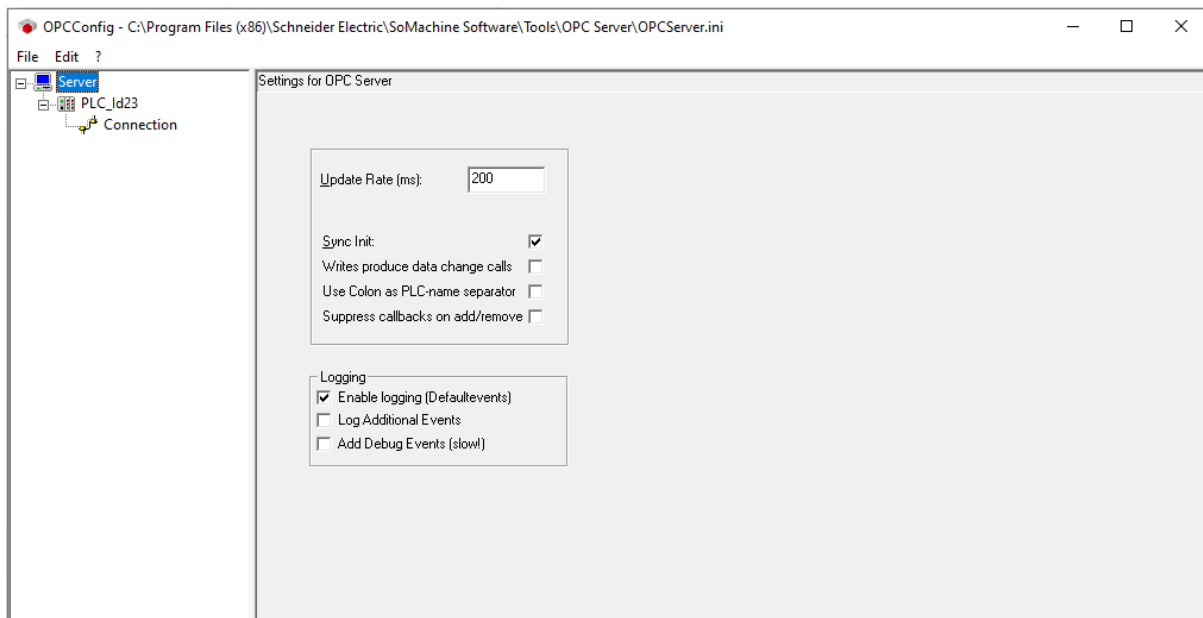
- First connected with your controller. For the Controller name.
- Go to Tools and Select OPC.
- Here, you have get Controller name or Address.
- This name used for the communication from SoMachine controller to OPC DA.

Step 5 :

- **OPC DA Configuration in SoMachine.**
- Open OPC-DA Configuration in your PC.
- Here, you have require to configure the OPC-DA for the communication.

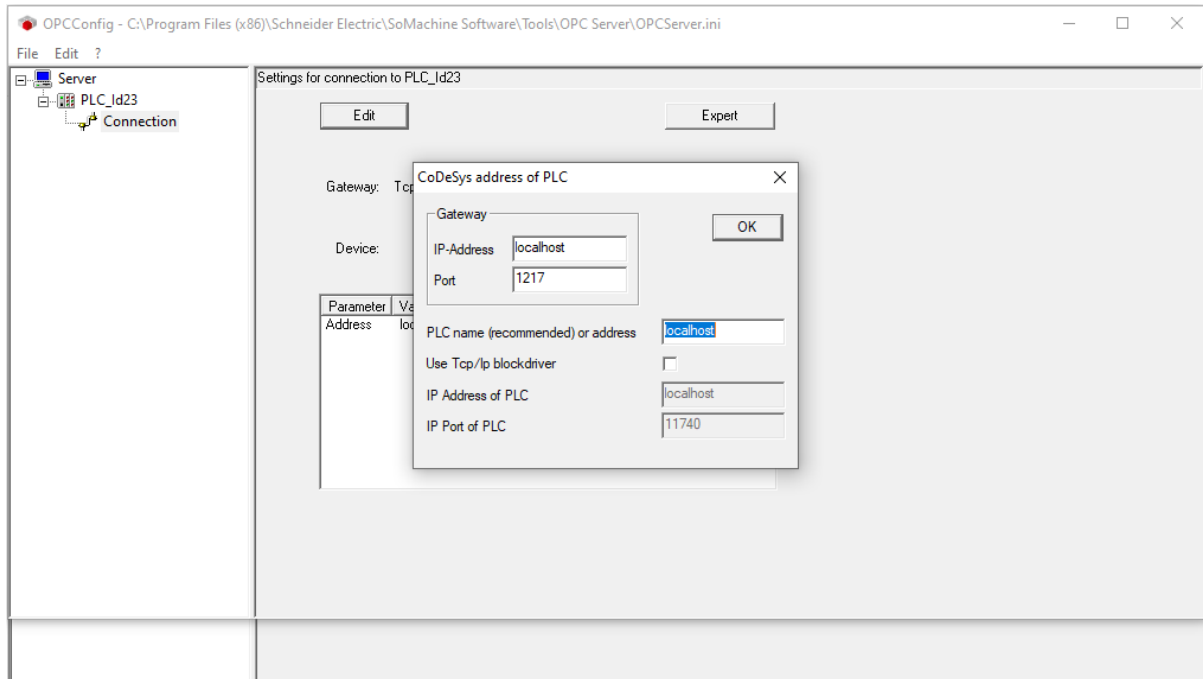


OPC-DA Configuration



OPC-DA Configuration

- Create Append PLC and Open Connection.
- Click on Edit button.
- Write Controller name inside the **PLC Name or Address**.
- Save configuration.



OPC-DA Configuration

- Open **System Management console** and install **FSGateway** driver in the system.
- Configure all the settings which have require for the communication.
- Type Item references with Item name and used in SCADA.
- After this configuration, you have able to write Boolean Values in the Controller.
- Configuration done successfully.