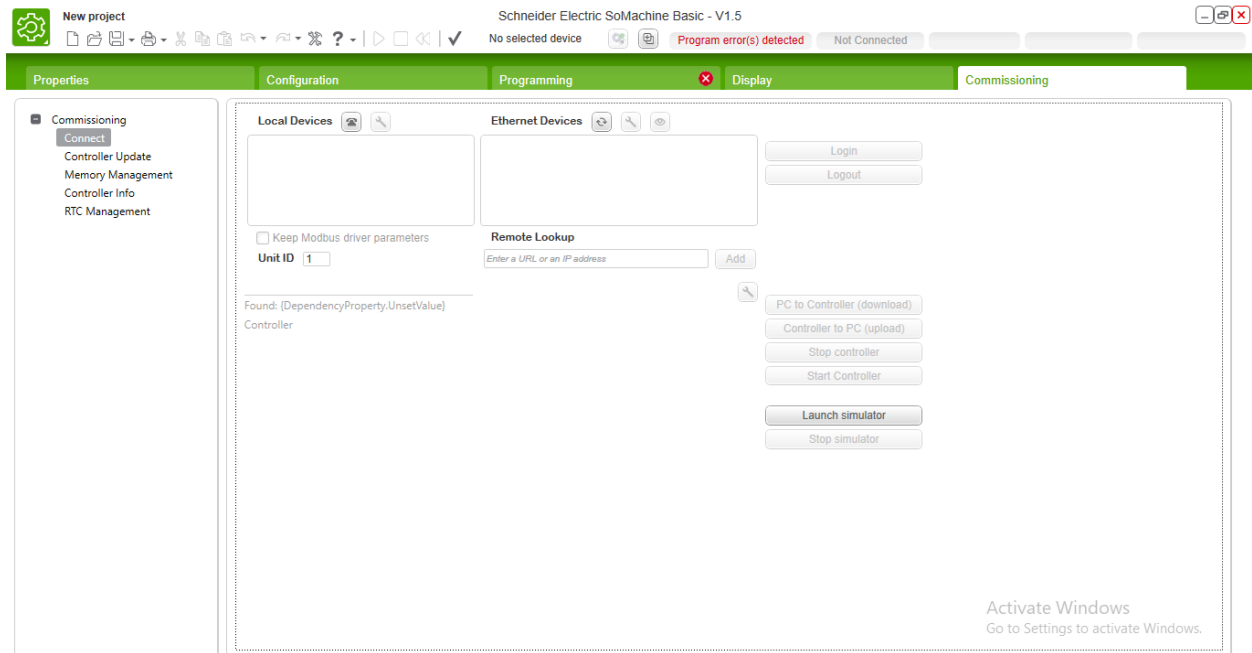


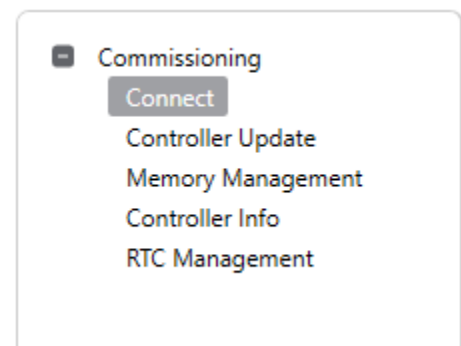
## Commissioning Section of the Somachine Basic

- Commissioning Section :
  1. Connect
  2. Controller Update
  3. Memory Management
  4. Controller Info
  5. RTC Management



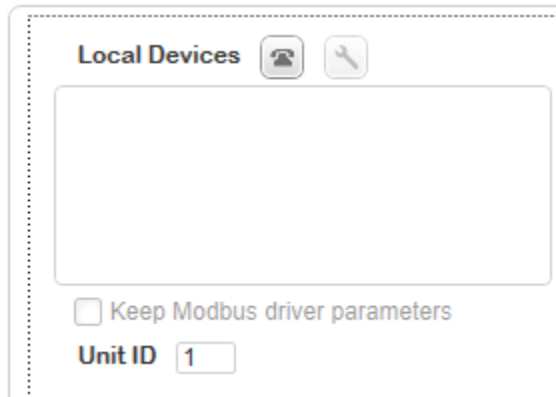
## Controller Login Page



- Here, You can Login with your controller and also easily upload and download PLC Program to controller.
- In this section you have option for the controller simulation.
- There are two boxes available :
  1. Local Devices
  2. Ethernet Devices



## Connection Procedure

## Local Devices :



Local Devices  

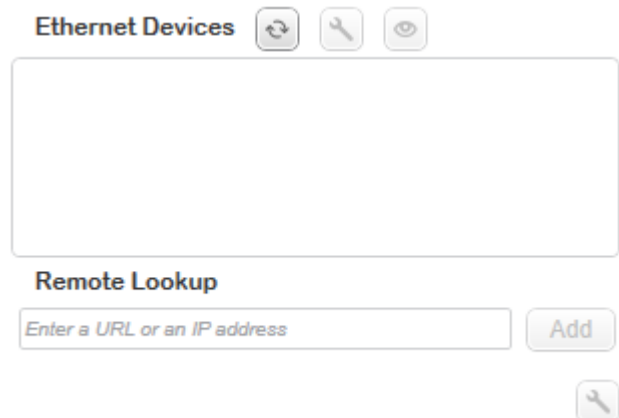
Keep Modbus driver parameters




Unit ID

- While your have connected Serial line or USB Communication with the controller then you Can get controller name in this BOX.
- Double clicking on controller name you have a Option for the program Upload or Download.


## LOCAL DEVICES

- While your controller connected on Ethernet Communication then and only you have got Ethernet IP Address in this box.
- Simply double click on that IP Address and Login with the controller.
- After Login with controller you can easily Upload and Download PLC Program.

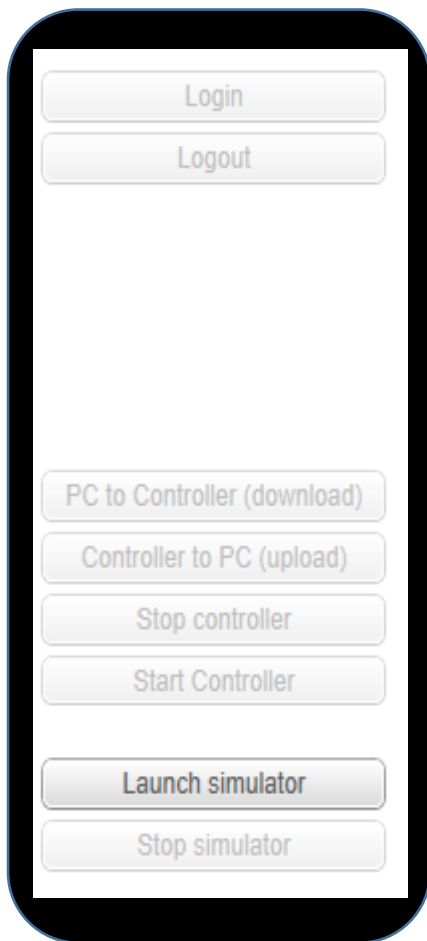


Ethernet Devices   

Remote Lookup



## ETHERNET DEVICES

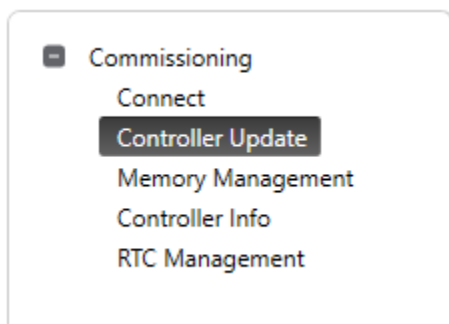


After connected with the controller you got a option for the Login and Logout.

1. **LOGIN** : Login button used for the going to online with Controller.
2. **LOGOUT** : Logout button used for the going to offline with the controller.
3. **PC to Controller (Download)** : For this function to you have download the PLC program from PC to Controller.
4. **Controller to PC (Upload)** : For this function to you have Upload the program from controller to PC.
5. **Stop Controller** : For this function to you have Start Controller.
6. **Start Controller** : For this function to you have Stop Controller.

## Commissioning Section

1. **Launch Simulator** : This section used for the simulation testing.
2. **Stop Simulator** : This section used only for the simulation stop.



## Controller Update Procedure

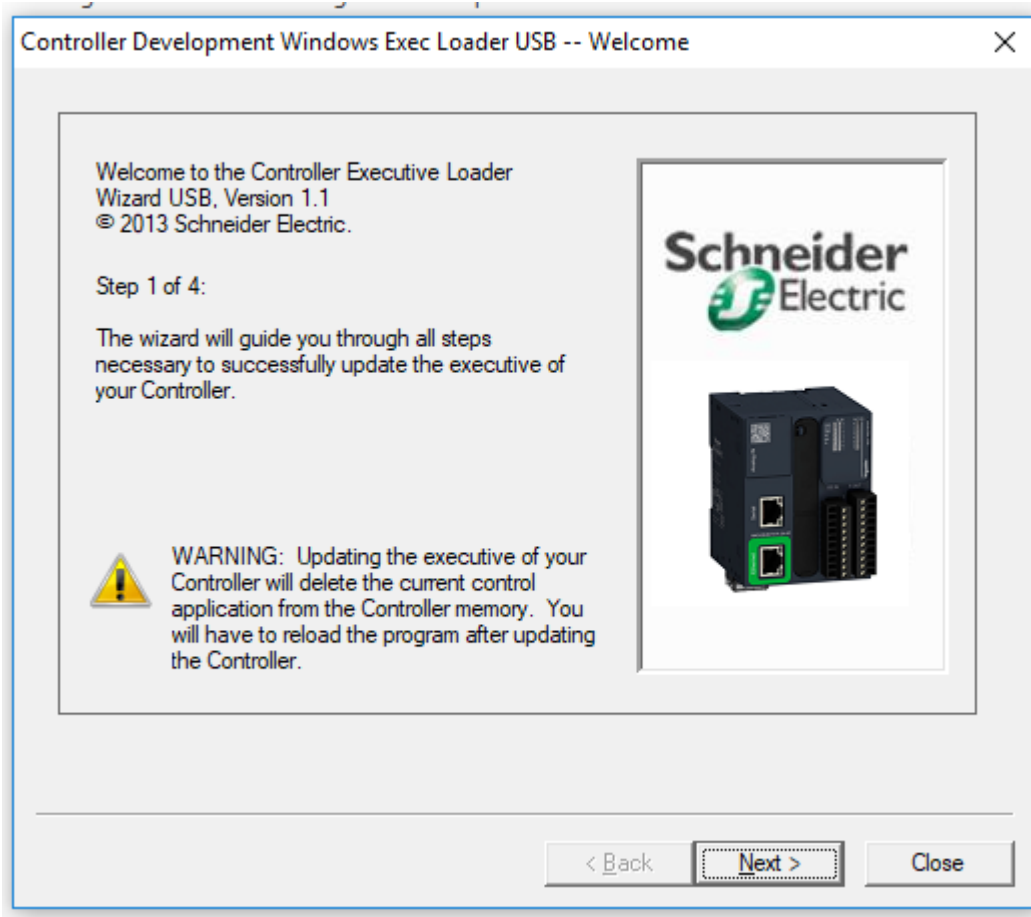
- **Controller Update** : This section used for the Firmware Up gradation of the controller.
- **Example** : Your controller Firmware is 1.4 and you want to update your controller Firmware 1.5 then first you have to select Controller Update and click on Update as per attached Image.

Verify you are not connected to the logic controller when using Firmware Update.

Update

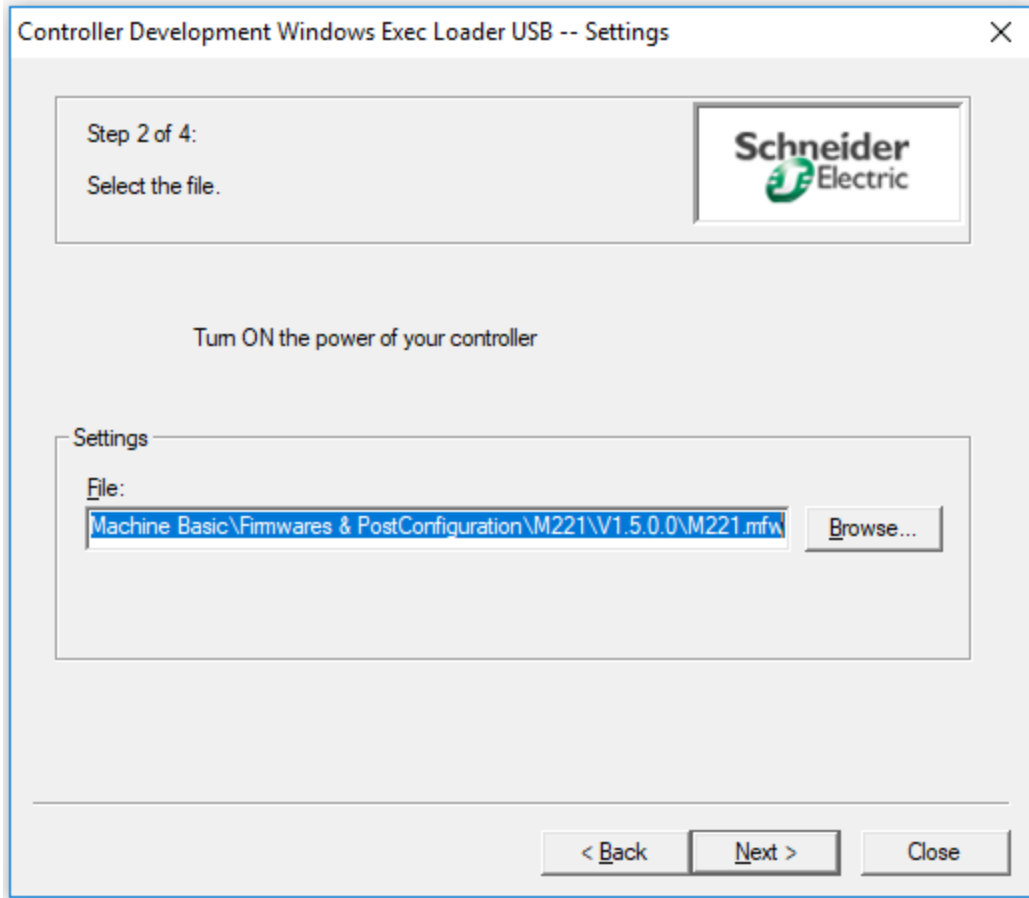
## Controller Firmware Update Procedure

- Click on **UPDATE** button.



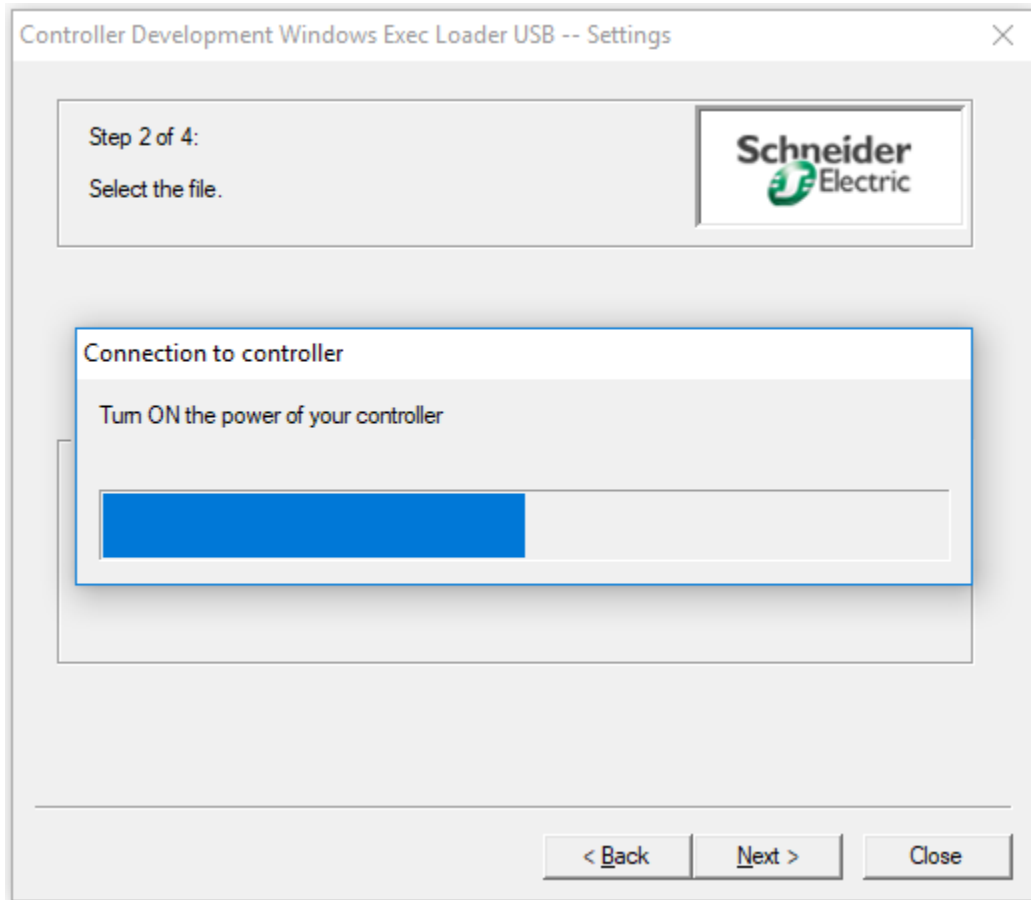
## Firmware Up gradation Procedure

- First **TURN ON** the controller and Click on the **NEXT** button.
- Select the **Path** where you have a file for the Firmware.
- Select the **Path** : C:\Program Files (x86)\Schneider Electric\SoMachine Basic\Firmwares & PostConfiguration\M221\V1.5.0.0\M221.mfw



### Path Selection for the Firmware Up gradation

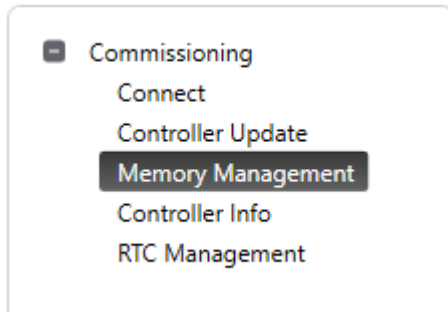
- Click on **NEXT** button.
- Here, Take a time for the downloading controller firmware.
- Please check your connection, and can't disconnect connection on Firmware up gradation time.
- Go to Next and complete the Firmware Up gradation.



### Controller Connection on Firmware Up gradation

- After Completion of the Firmware Up gradation, need to restart controller.
- Restart the Controller and wait for the starting.
- After Reboot the Controller Go to the Controller About and check the Controller Firmware.

## Memory Management :



- **Memory Management** : In this section you have get all the memory related information of the controller.

## Memory Management

Controller Memory Management

Action

Backup from Controller

Restore to Controller

Erase in Controller

Create Controller image

Read Image

Destination

Controller SD Card

PC

Include firmware

Include program


Include memory values

First Memory Bit  Last Memory Bit

First Memory Word  Last Memory Word

Include log file

Erase post configuration file

Activate Windows  
Go to Settings to activate Windows

## Controller Memory Management

## Controller Memory Management

### Action

- Backup from Controller
- Restore to Controller
- Erase in Controller
- Create Controller image
- Read image

- **Action :**

1. **Backup from Controller**
2. **Restore to Controller**
3. **Erase in Controller**
4. **Create Controller Image**
5. **Read Image**

## Controller Memory Management

### Backup from Controller :

- You have require a backup of the controller with all the memory, Simply click on **Backup from Controller** and select the Path where you have to save the data.
- This Saved data you are used for the restore.

### Restore to Controller :

- You have require to restore the backup file in controller then simply click on the **Restore to Controller** button and select the path where you have already saved the backup file of the memory.
- Simply go to next and wait for the successfully restoring process.

### Erase in Controller :

- This function only for used memory Erasing.
- For this function to total memory erased from the controller.

### Create Controller Image :

- If you want to create a image file of the controller then you have use this function.
- Click on the **CREATE CONTROLLER IMAGE** and select the Destination.



Destination

Controller SD Card

PC  

Include firmware  

### Create Controller Image Procedure

- Two options are there :

1. Controller to SD Card
2. PC

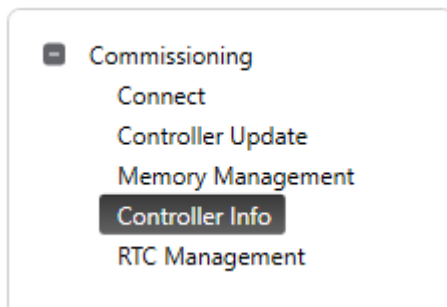
- Select the destination which you have require and Click on this button.



- Also you have a option for **the Include firmware or without firmware.**

Include firmware  

### Controller Info :



- **Controller Info :**

This function showing information of the controller.

Like :

1. **Controller State**
2. **Status**
3. **Scan time**
4. **Controller time**
5. **Ethernet Information**
6. **Serial post configuration**

## RTC Management :

- RTC Management to change Controller time and also you have option for the **Update controller time from the PC.**
- Easily you can change controller time from using this function.

- Commissioning
  - Connect
  - Controller Update
  - Memory Management
  - Controller Info
  - RTC Management**

## RTC Management

### RTC Management

Controller time:

Update

Manual

25/03/2020

15

11:31:23



Automatic (use PC time to set controller time)

PC time:

25/03/2020 14:23:46

Apply

## RTC Management