



HONEYWELL FSC SOE

Steps for Continuous Alarm Printing Configuration



MARCH 19, 2020

SSM INFOTECH
SURAT- GUJARAT

Below are main steps for BHEL FSCSOE requirement

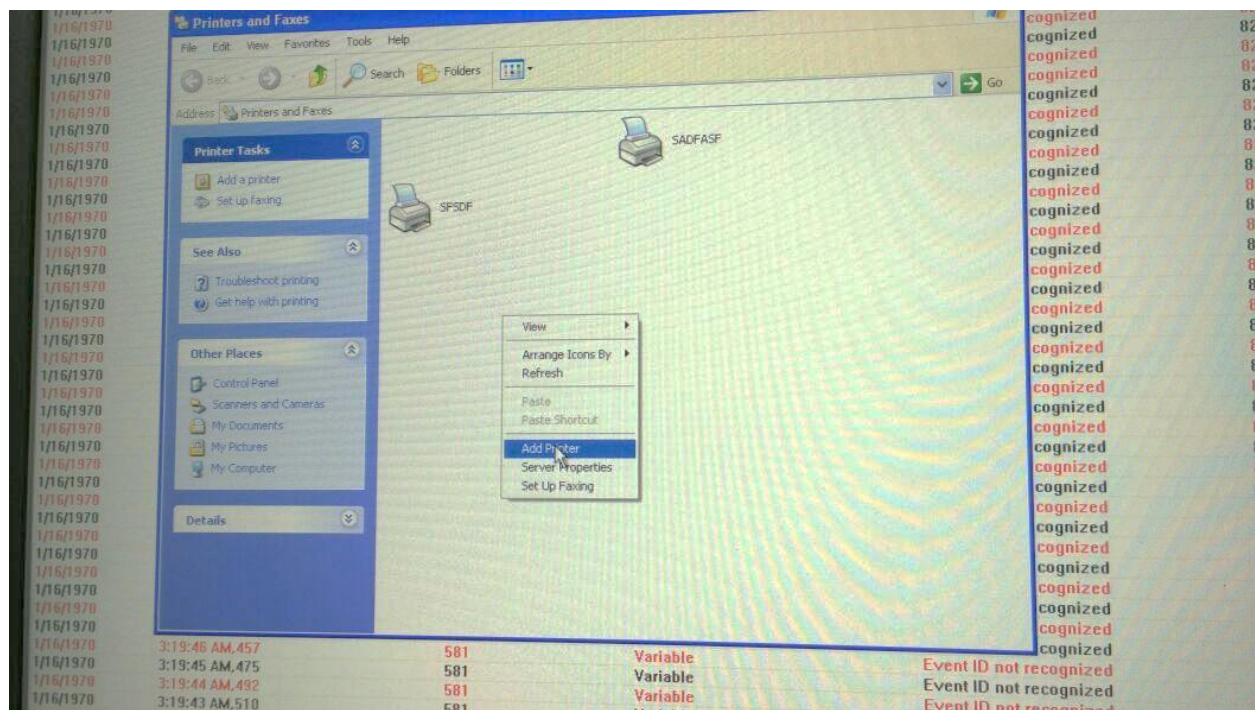
Step -1 - Add a printer port with Generic /text print option in windows

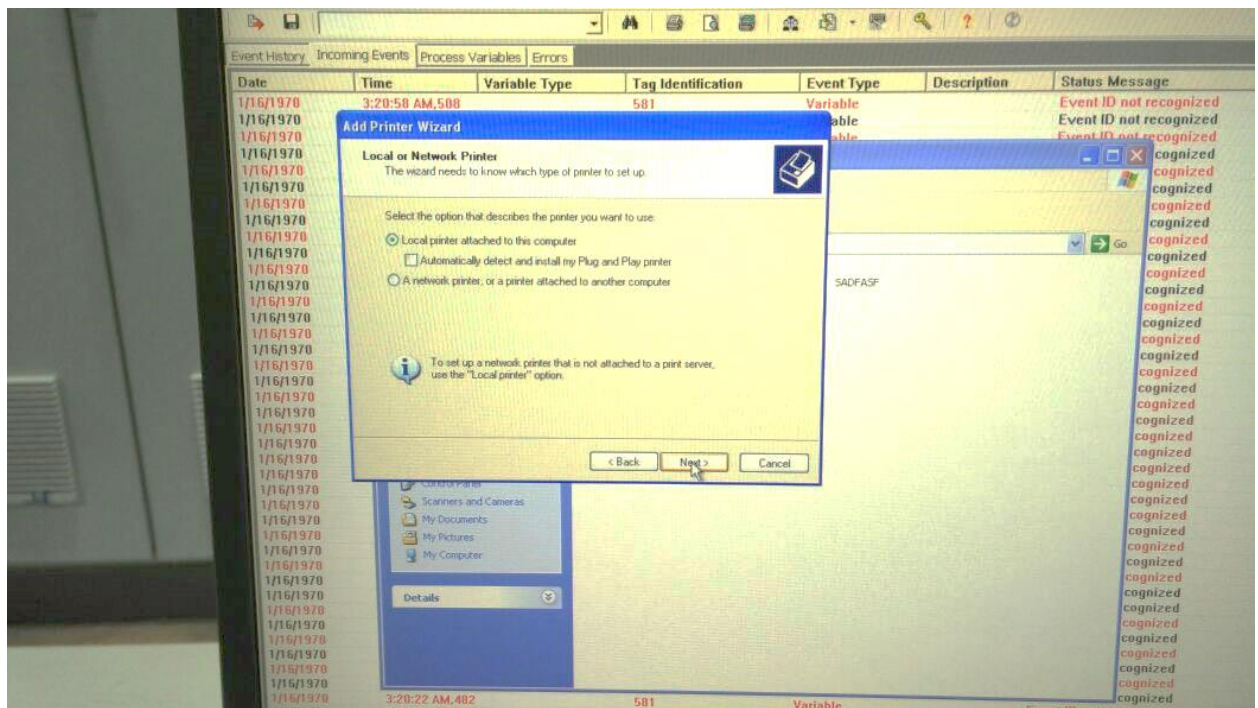
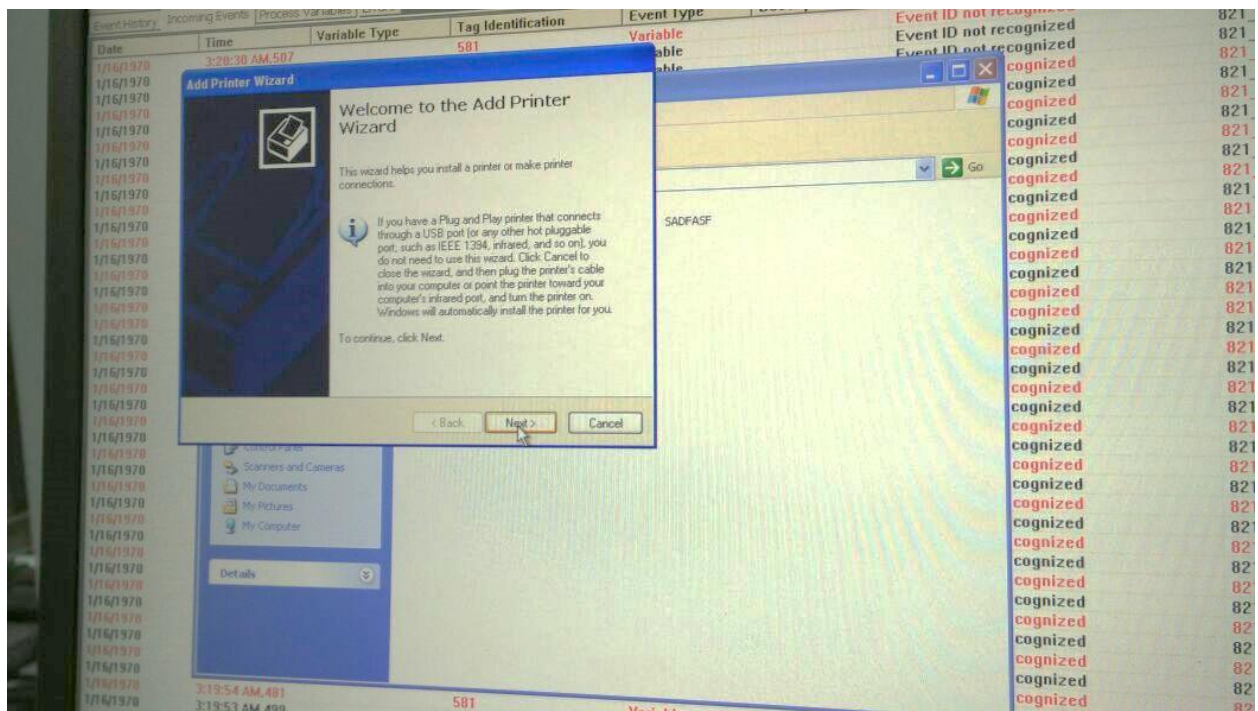
Step-2 - Add printer / configure printer in FSCSOE application

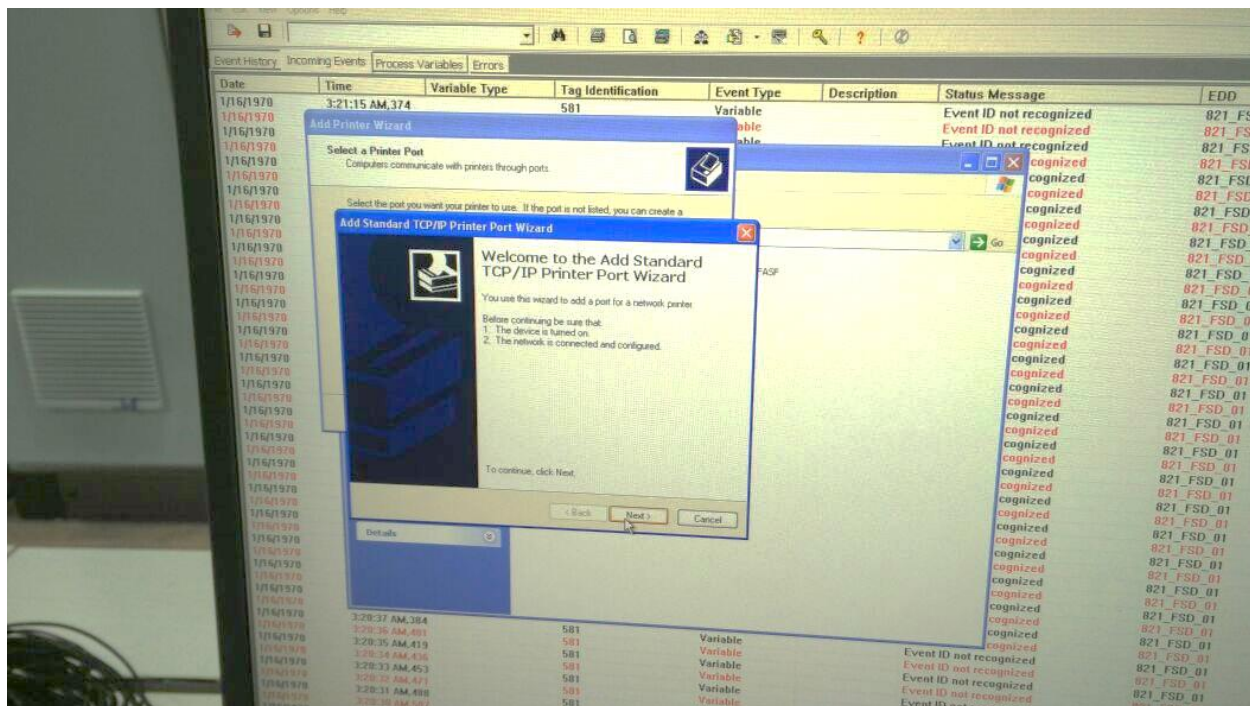
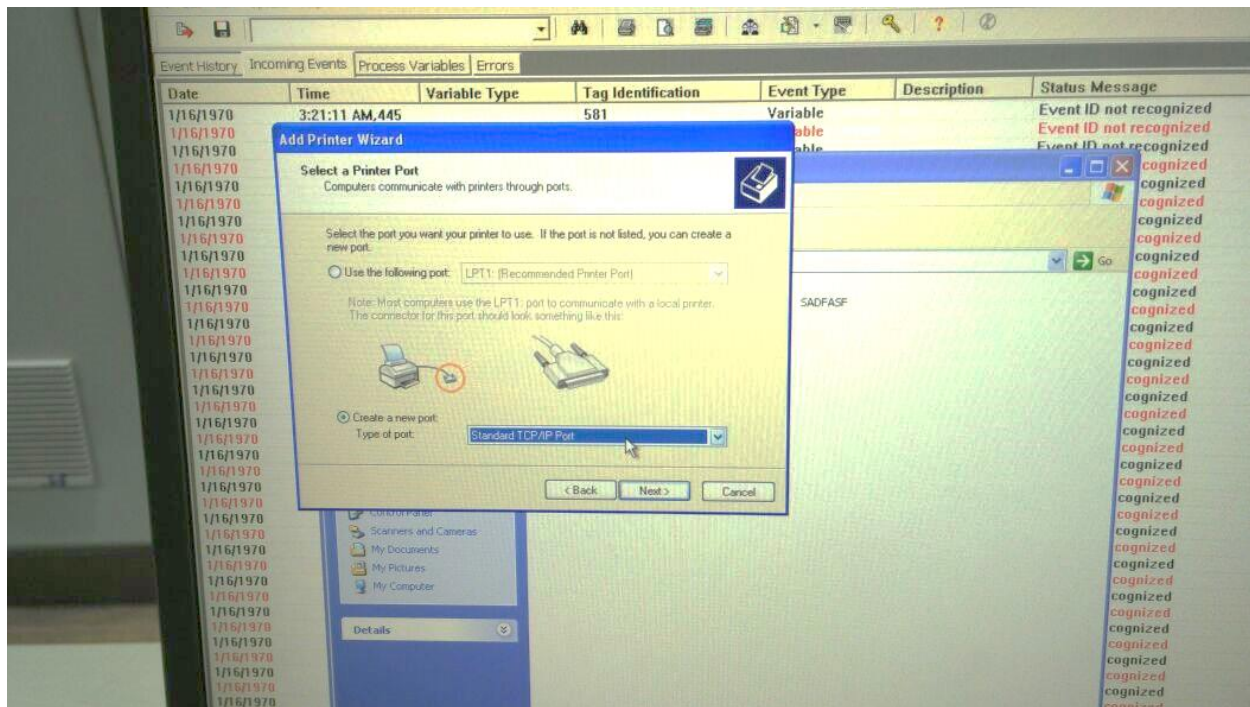
Step-3 - Close /Exit FSCSOE application

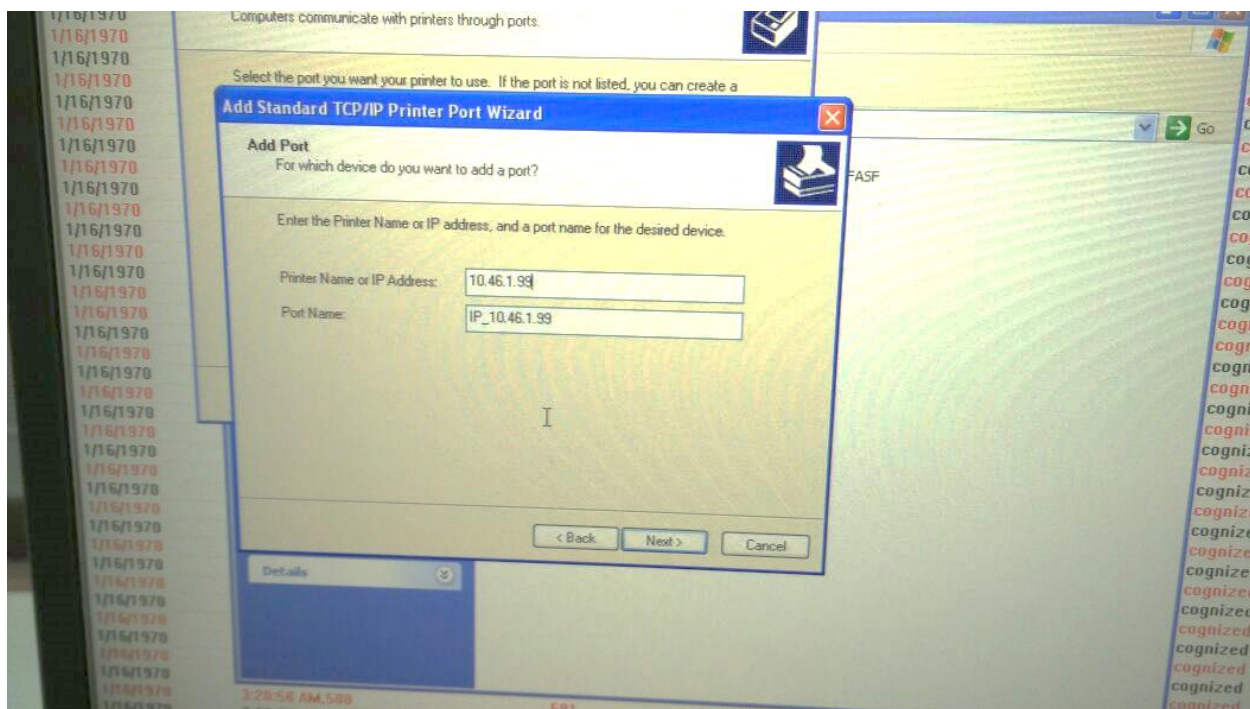
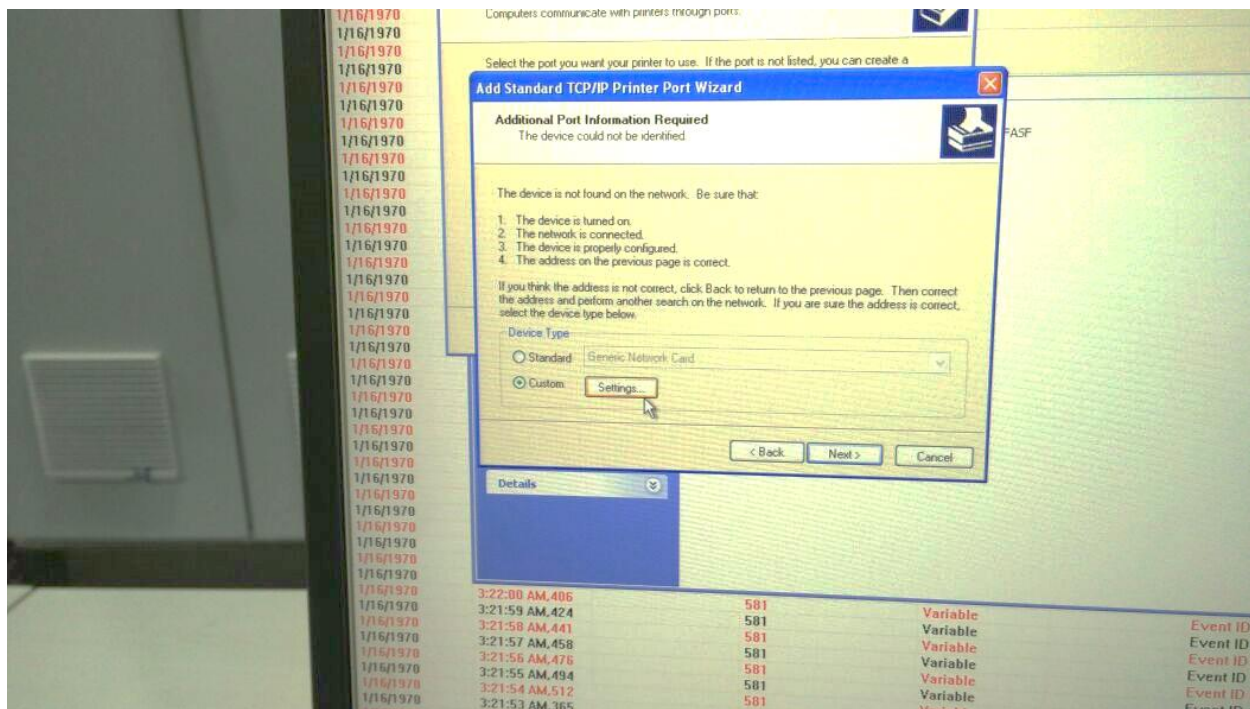
Step-4 - Reopen FSCSOE application and check events getting printed on configured windows printer

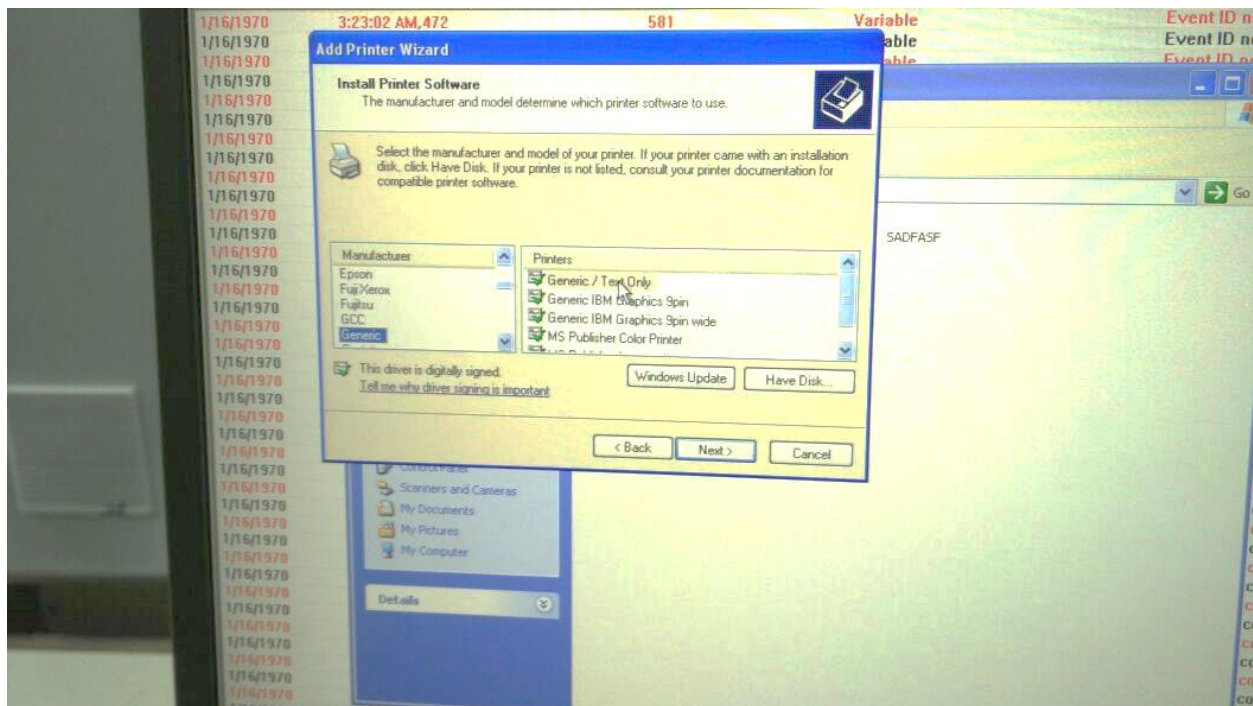
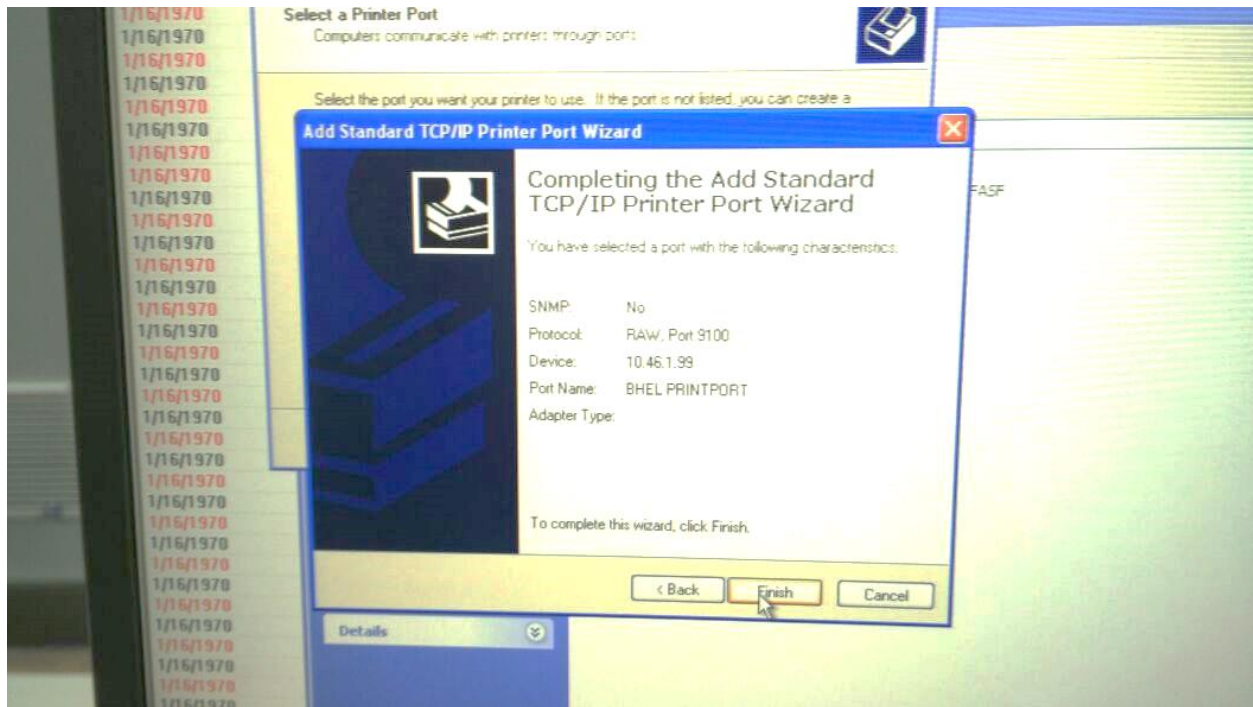
Refer snaps for step by step configuration

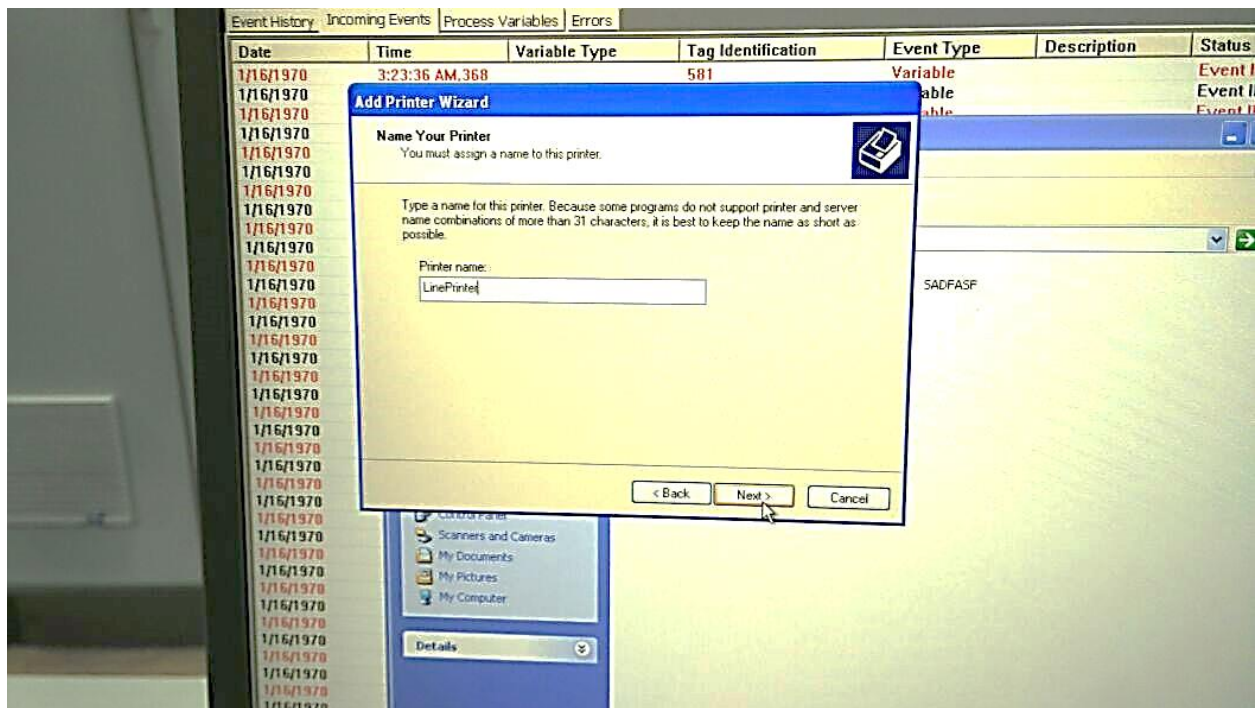
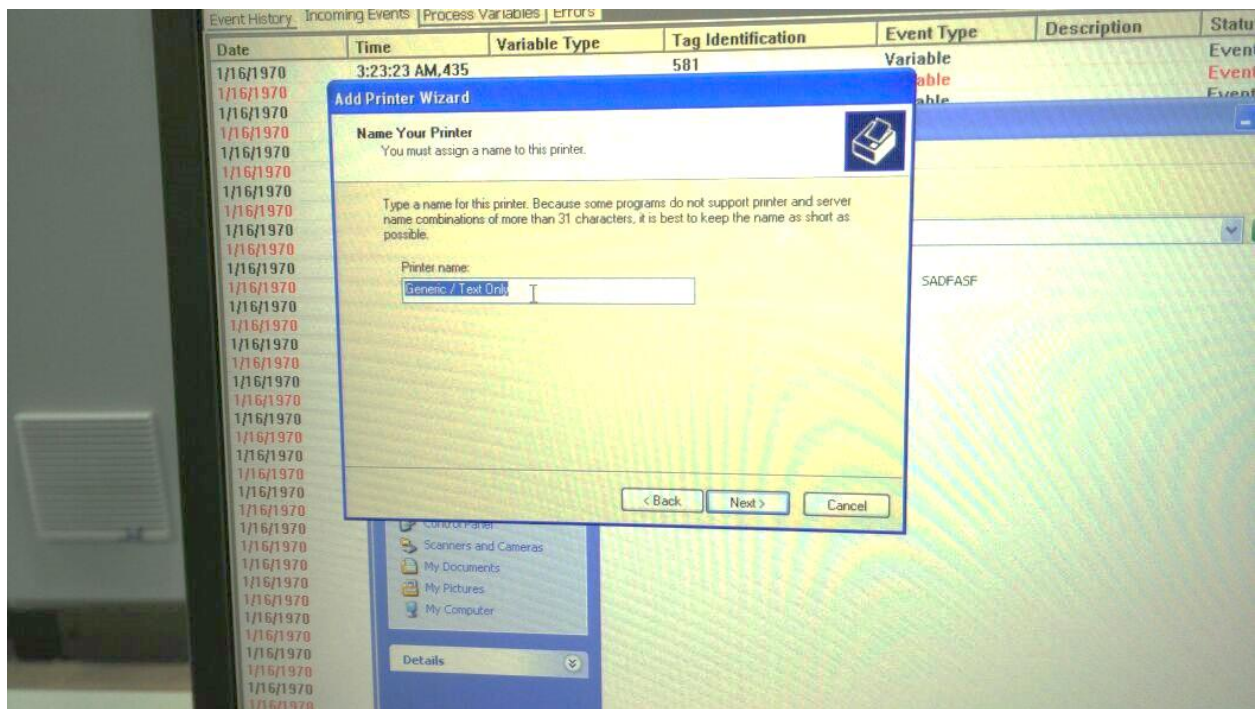


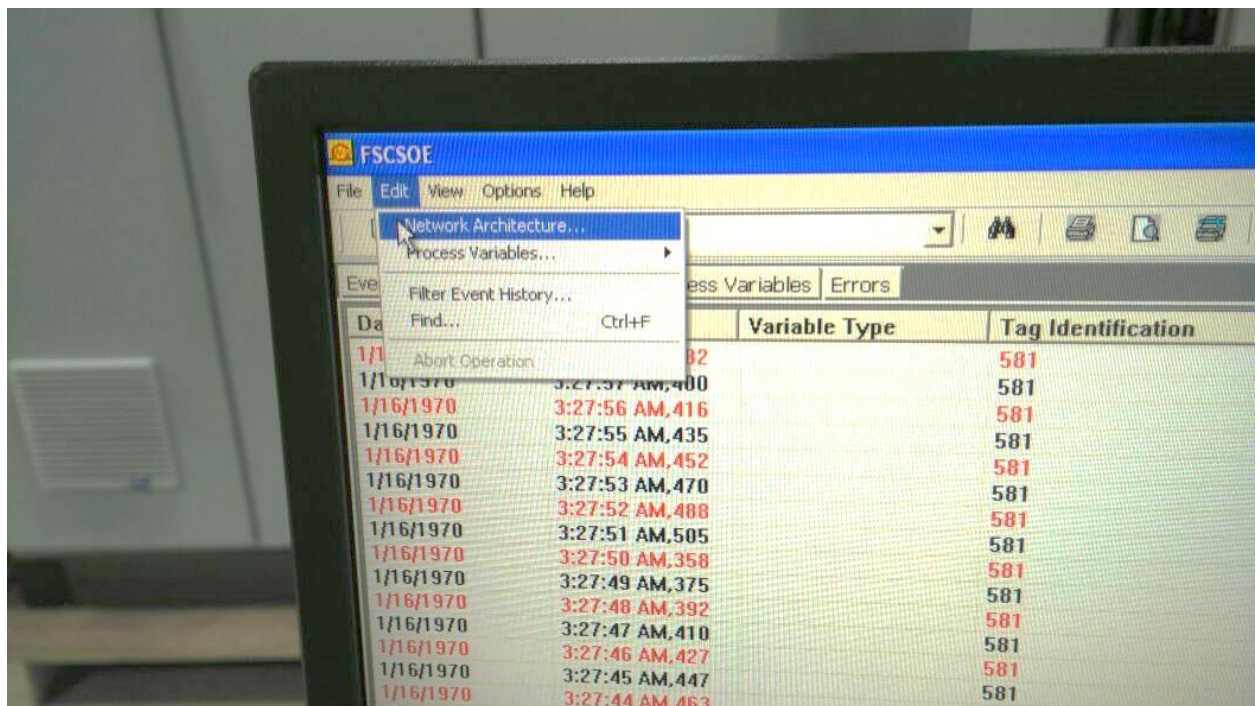
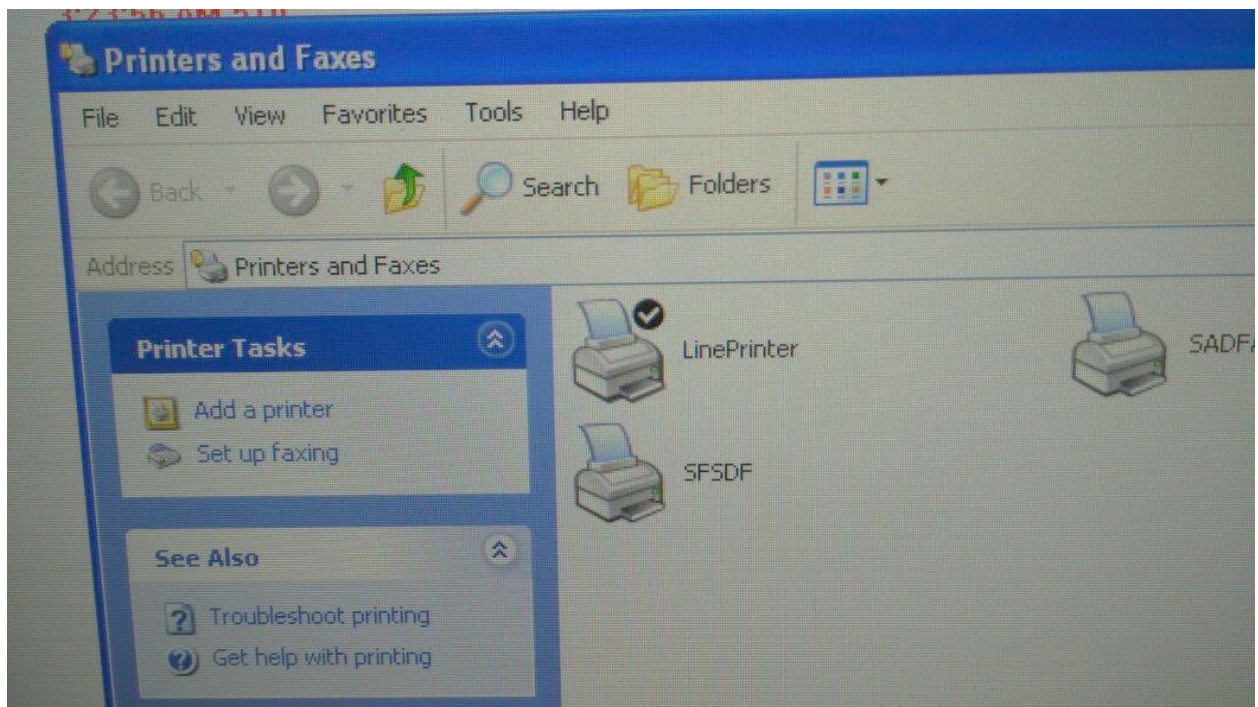


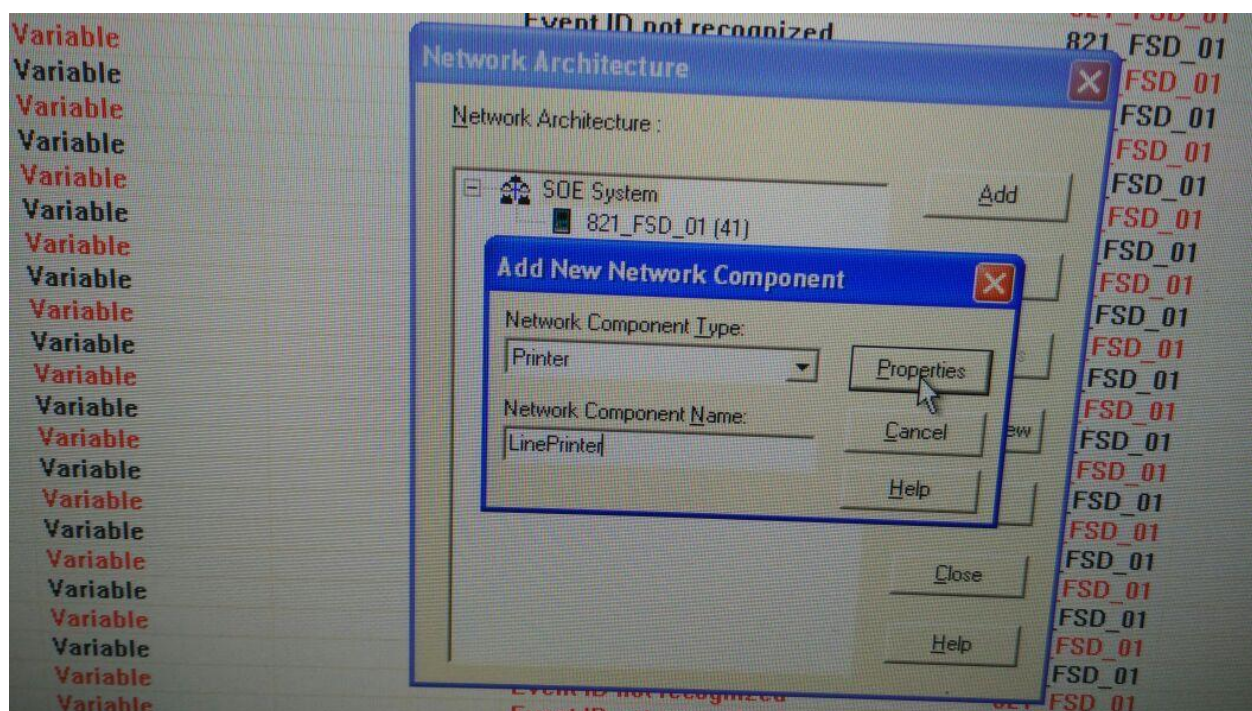
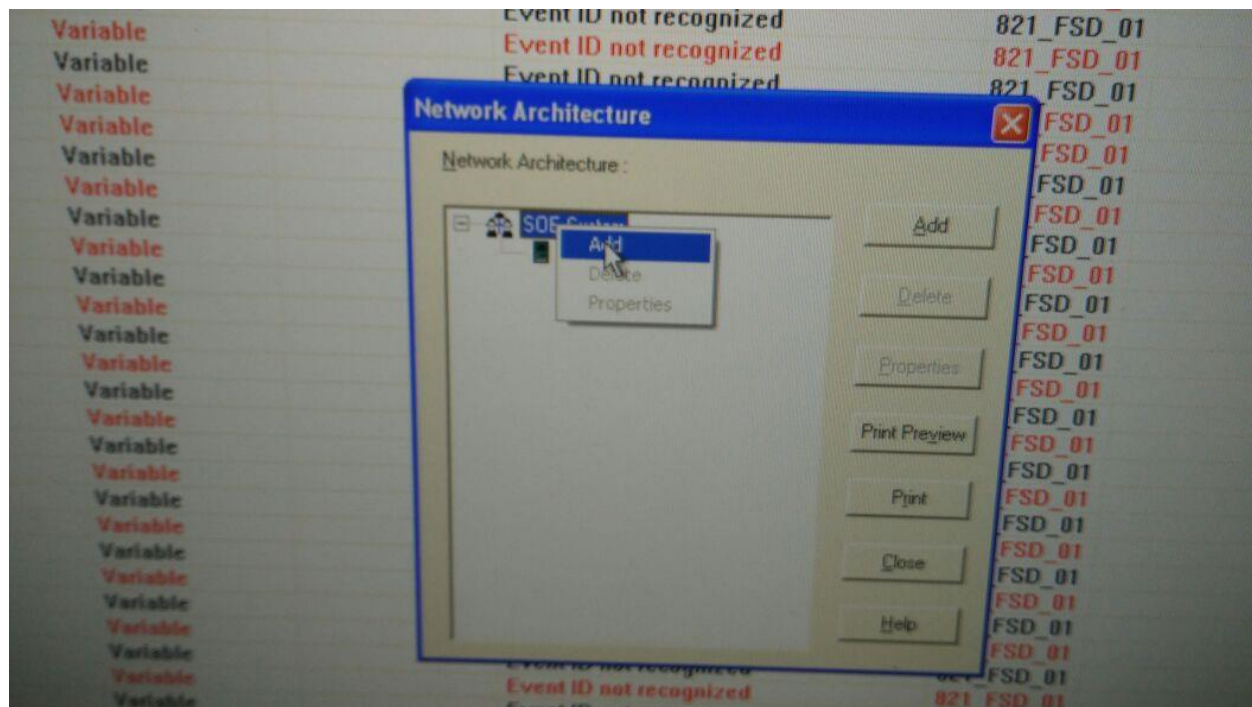


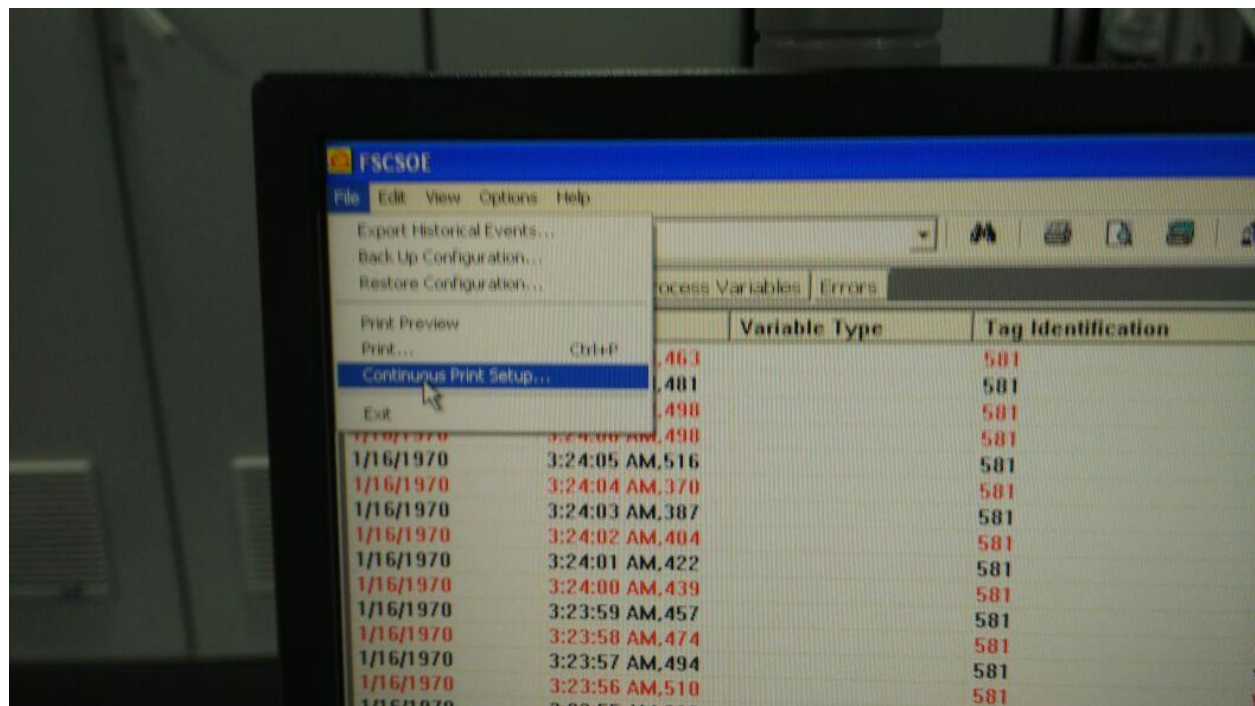
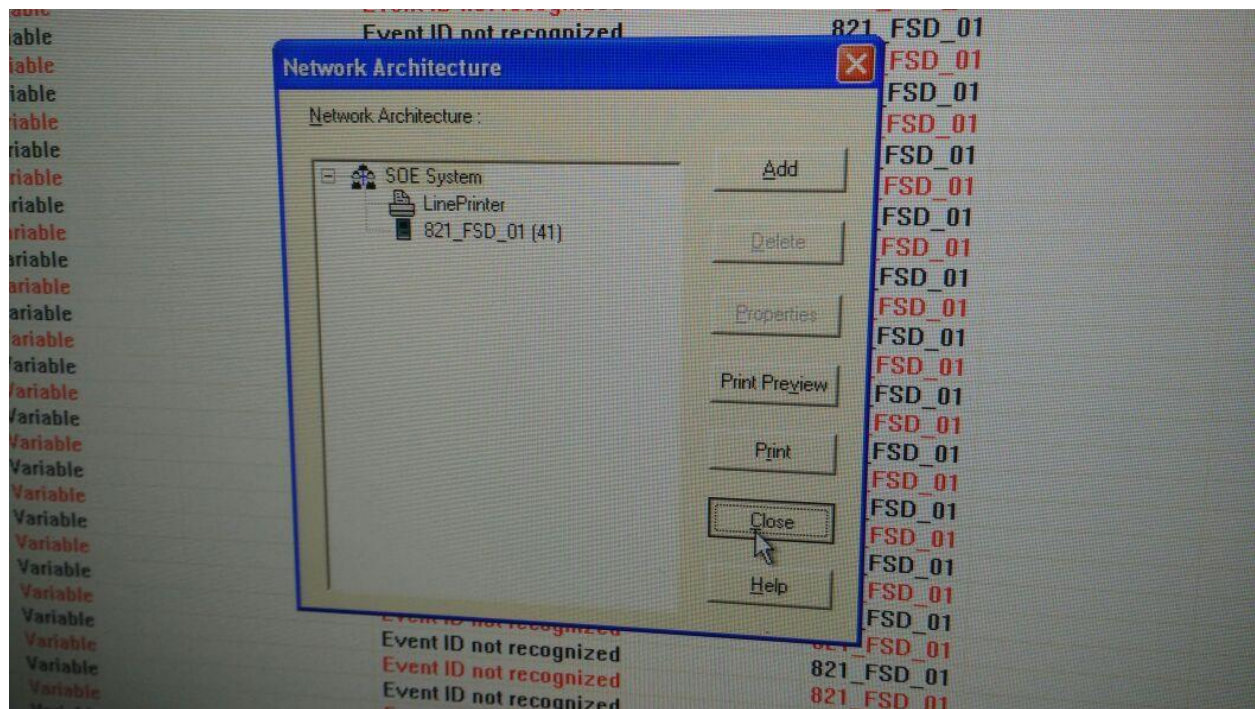


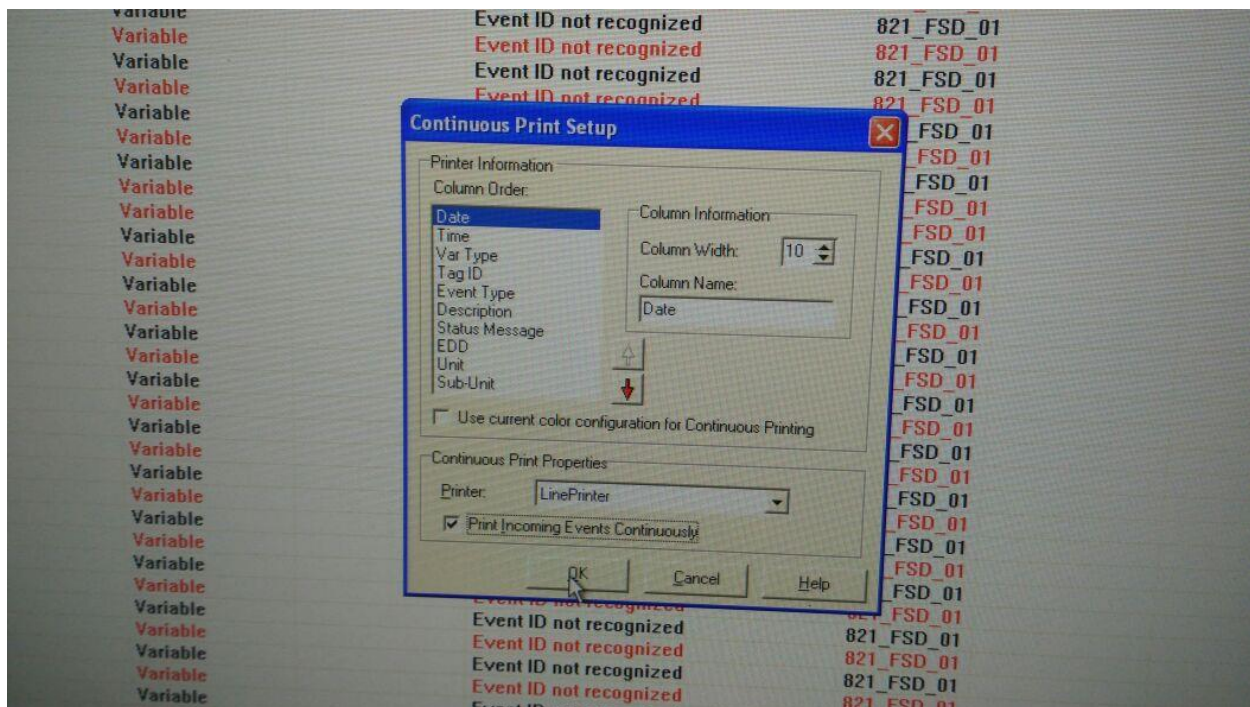




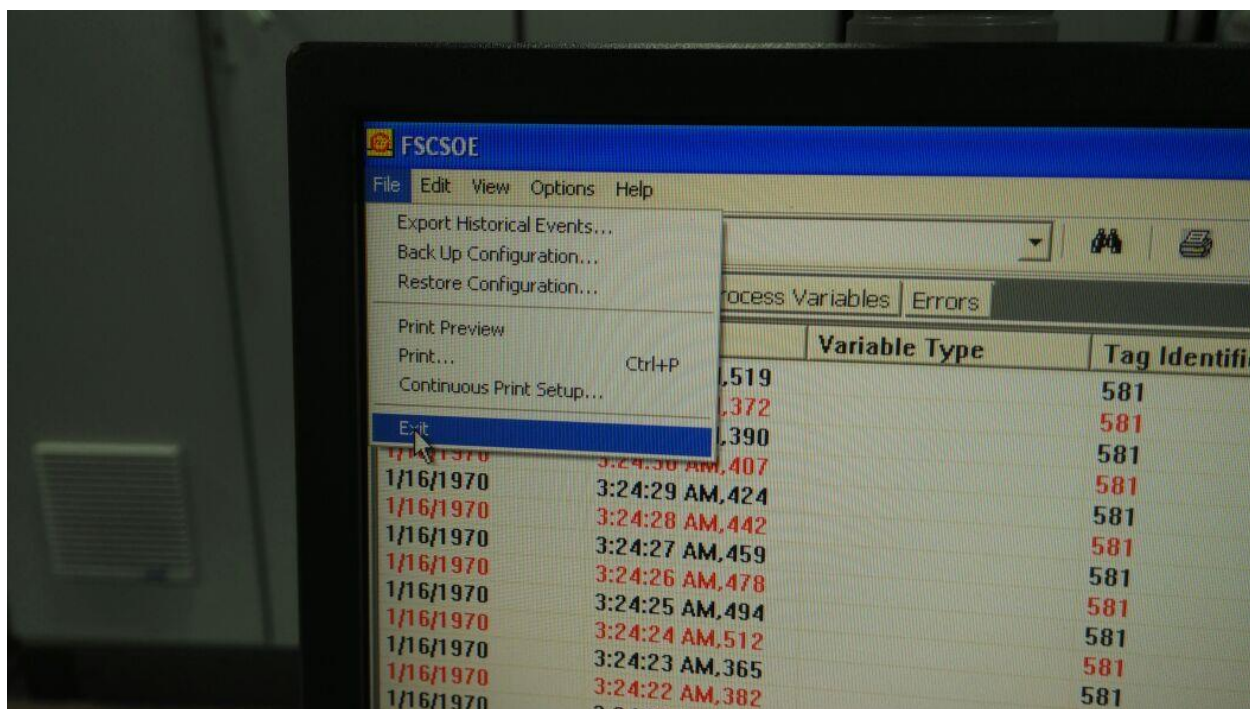




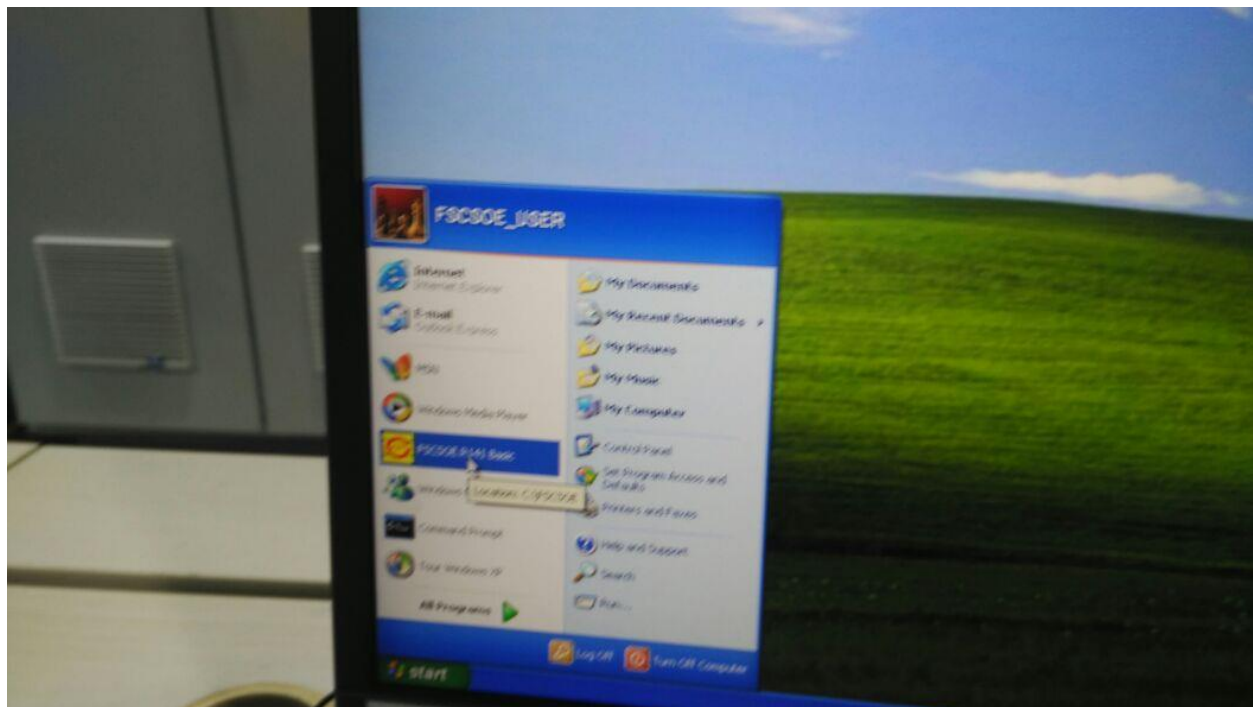




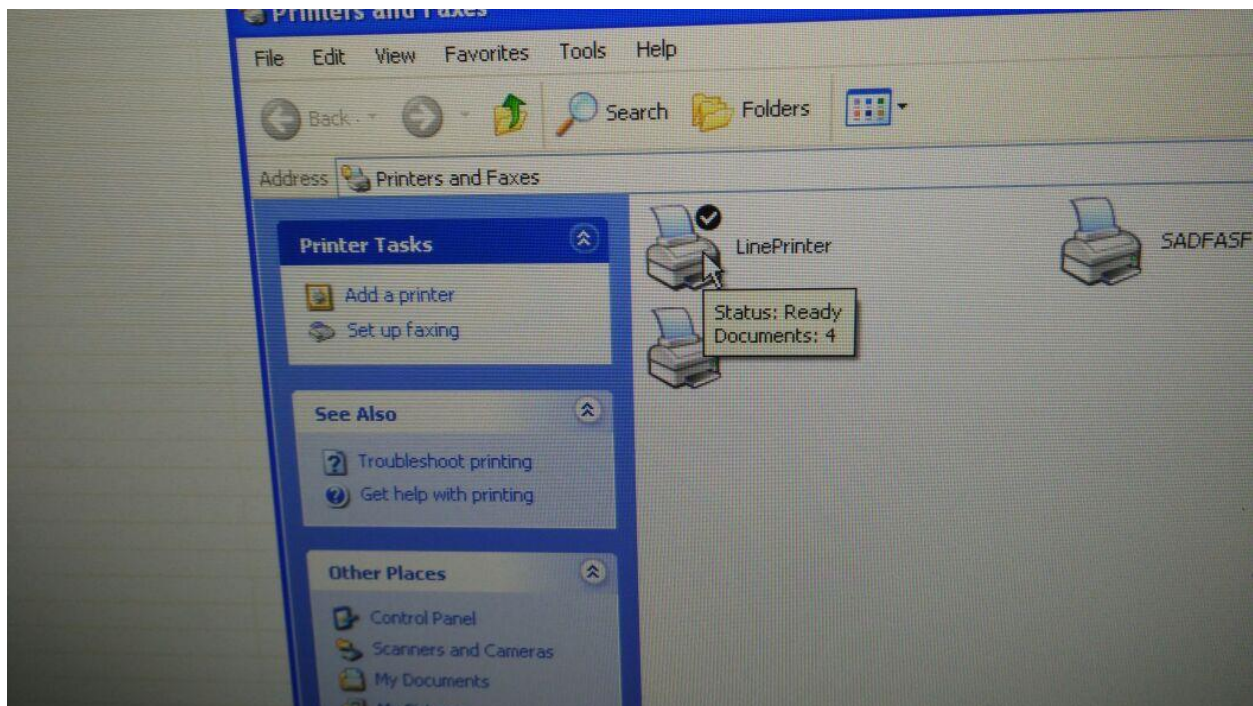
After adding printer and configuration of printer for continuous printing then close/exit FSCSOE application



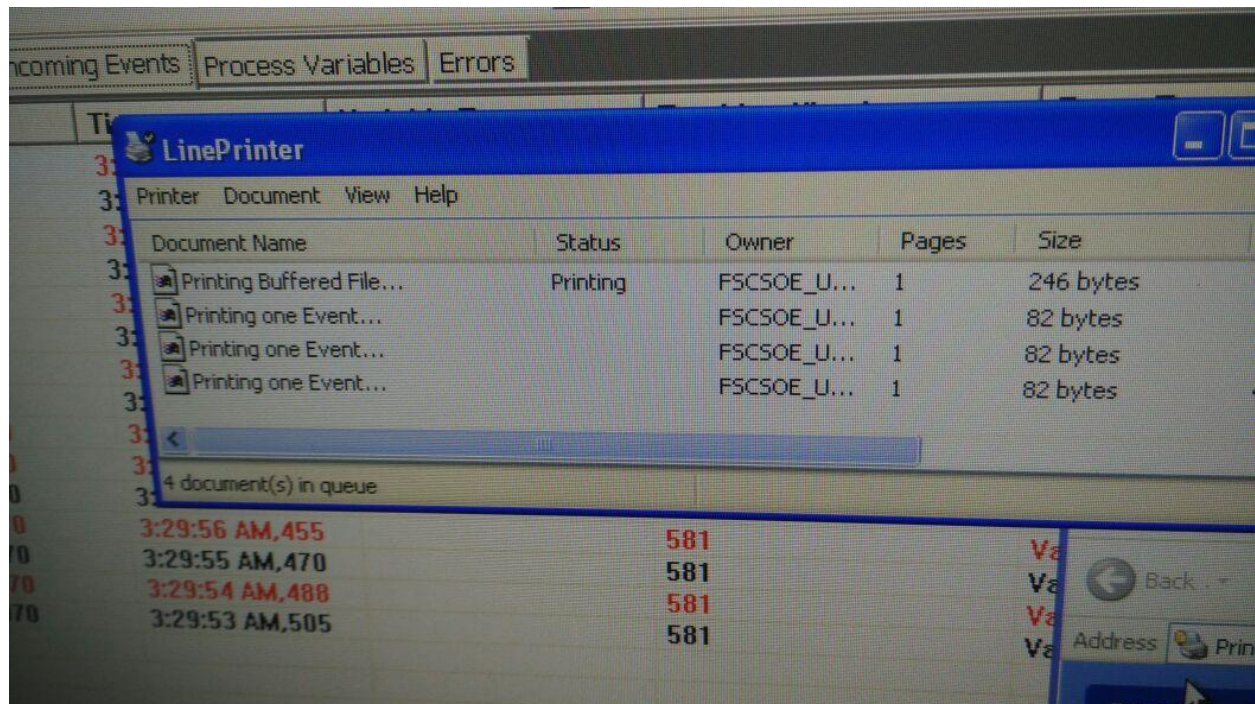
After few minutes, reopen FSCSOE application



Then check printer status, it will show documents as per below



Double to check documents spooling status.



If AMS system available then prints shall be received by AMS system and if AMS system not available then remove/uncheck continuous print configuring to avoid receiving printer error in windows notification area.

END