

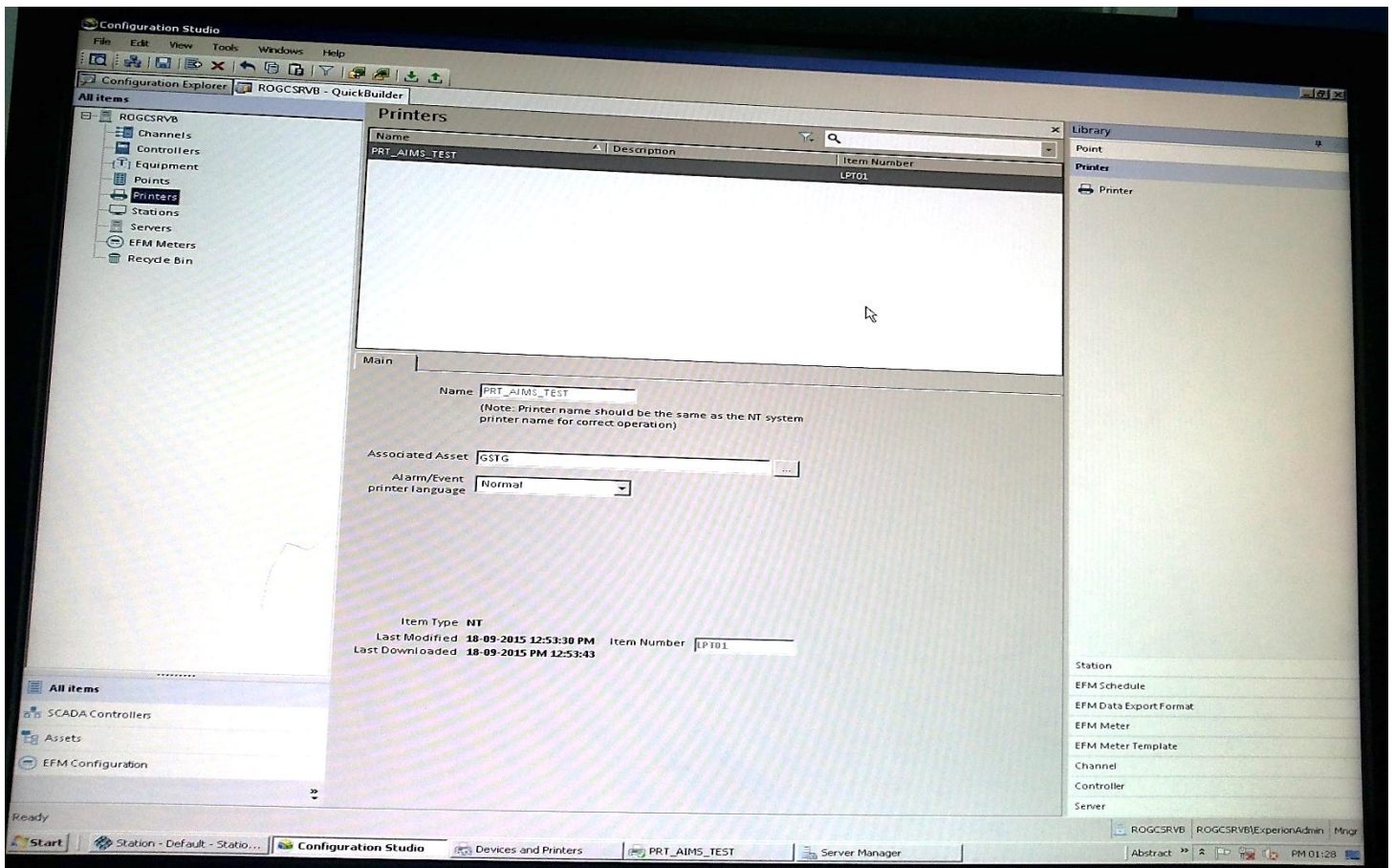
Steps for continuous alarm printing
configuration in Honeywell DCS

How to define Alarm Printing Configuration

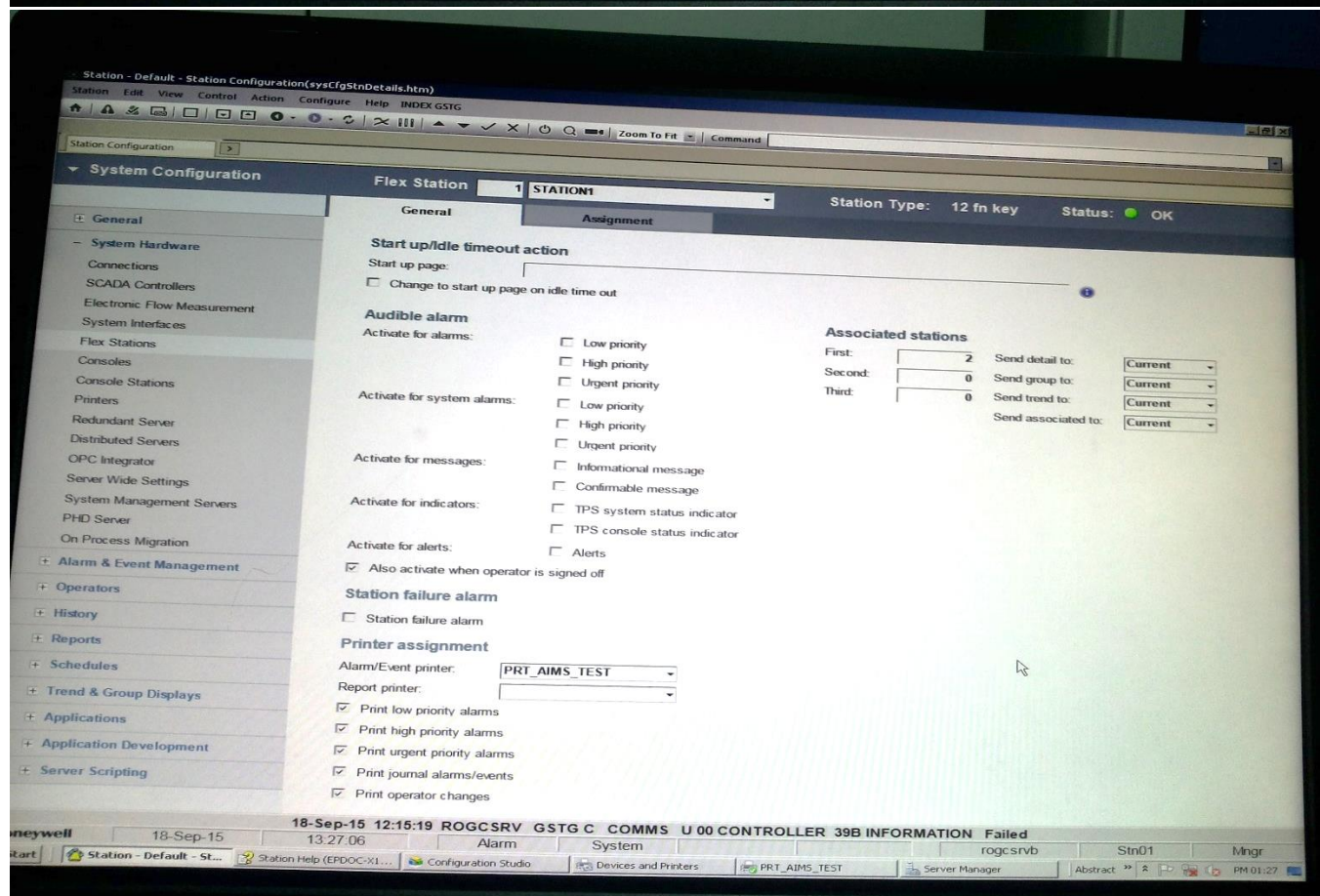
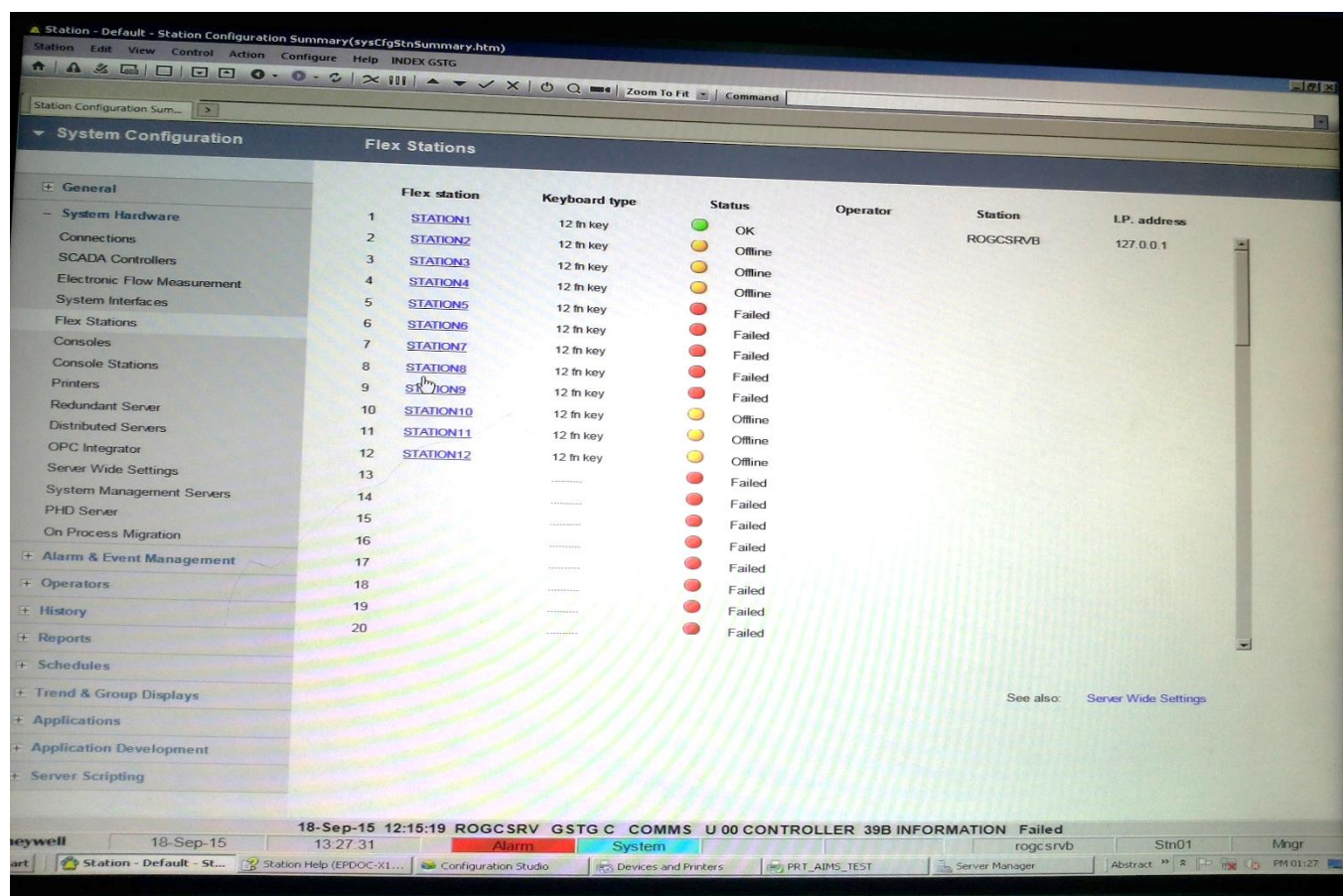
For Honeywell DCS-
TPS GUS & Experion

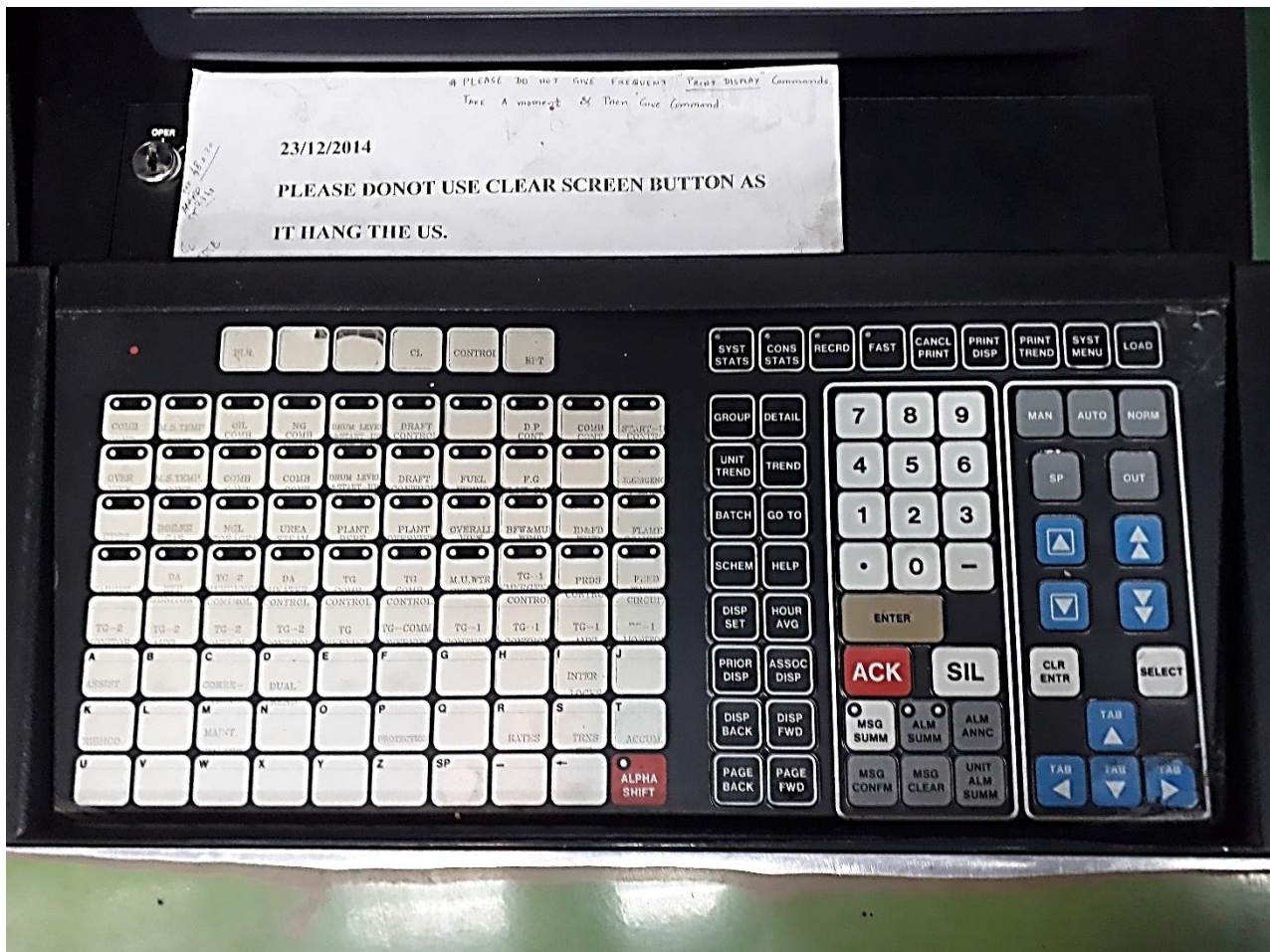
Rajnikant Koladiya

1) First, need to create alarm printing point from Configuration Studio (Experion DCS Vrsion)

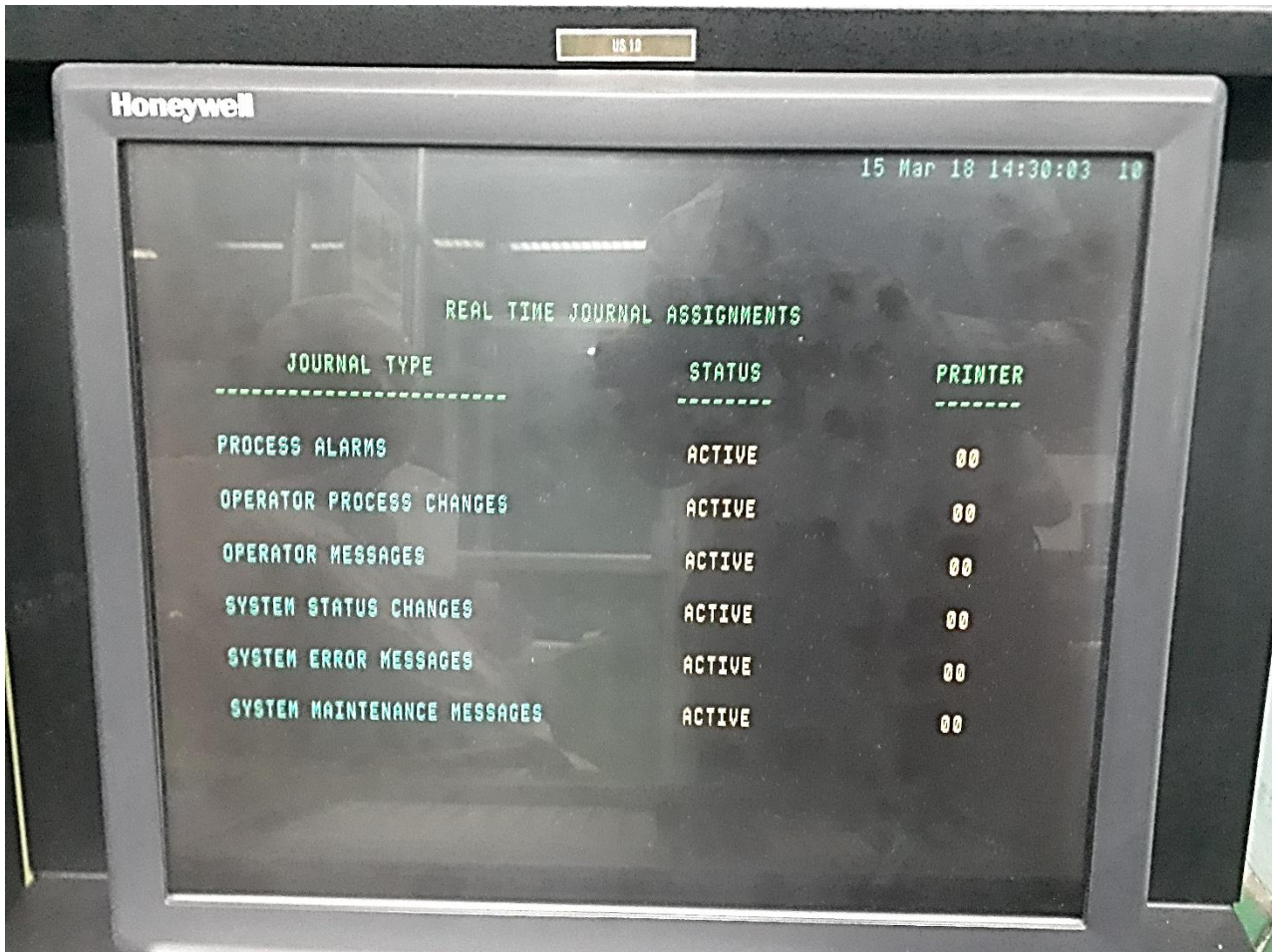


2) After assignment of Printer point, go to flex station and assign logger accordingly:





FOR DCS – HONEYWELL TPS GUS



Honeywell

15 Mar 18 14:30:00 10

REAL TIME JOURNAL ASSIGNMENTS

JOURNAL TYPE	STATUS	PRINTER
PROCESS ALARMS	ACTIVE	00
OPERATOR PROCESS CHANGES	ACTIVE	00
OPERATOR MESSAGES	ACTIVE	00
SYSTEM STATUS CHANGES	ACTIVE	00
SYSTEM ERROR MESSAGES	ACTIVE	00
SYSTEM MAINTENANCE MESSAGES	ACTIVE	00

REPORT/LOG/TREND/JOURNAL MENU

PAGE 1

NAME	TITLE	TYPE	PRNTR	DAY	START	PERIOD
LOG1	SHIFT PERFORMANCE REPORT	LOG	07	DEMAND		
LOG2	DAILY REPORT	LOG	09	DEMAND		
LOG3	SHIFT CHARGE ENGR REPORT	LOG	09	SUSPEND		
LOG4	WKLY PERFRMNC REVM REPT	LOG	09	SUSPEND		
LOG5	MONTHLY REPORT	LOG	09	DEMAND		
LOG6	WEKLY PERFORMANCE REPORT	LOG	09	SUSPEND		
LOG7	DAILY EQUIPMNT RNG HOURS	LOG	09	DEMAND		
LOG8	WEKLY EQUIPMNT RNG HOURS	LOG	09	SUSPEND		
LOG9	MNTHLY EQIPMNT RNG HOURS	LOG	09	DEMAND		
LOGMON	MONDAY-DAILY REPORT	LOG	11	SMTWTFS	08:05	00:00
LOGTUE	TUESDAY-DAILY REPORT	LOG	12	SMTWTFS	08:05	00:00
LOGWED	WEDNESDAY-DAILY REPORT	LOG	13	SMTWTFS	08:05	00:00
LOGTHU	THURSDAY-DAILY REPORT	LOG	14	SMTWTFS	08:05	00:00
LOGFRI	FRIDAY-DAILY REPORT	LOG	15	SMTWTFS	08:05	00:00
LOGSAT	SATURDAY-DAILY REPORT	LOG	16	SUSPEND		
LOGSUN	SUNDAY-DAILY REPORT	LOG	17	SUSPEND		
LOG17	DAILY REPORT(NEW)	LOG	10	SUSPEND		

PRINT

DISPLAY

START
TIME

14:29

START
DATE

15 Mar 18

ACTIVATE

SUSPEND

CHANGE
PRINTER
CANCEL
PRINT

Honeywell

15 Mar 18 14:29:26 10

REPORT/LOG/TREND/JOURNAL MENU

PAGE 1

NAME	TITLE	TYPE	PRNTR	DAY	START	PERIOD
LOG1	SHIFT PERFORMANCE REPORT	LOG	07	DEMAND		
LOG2	DAILY REPORT	LOG	09	DEMAND		
LOG3	SHIFT CHARGE ENGR REPORT	LOG	09	SUSPEND		
LOG4	WKLY PERFRMNC REVM REPT	LOG	09	SUSPEND		
LOG5	MONTHLY REPORT	LOG	09	DEMAND		
LOG6	WEKLY PERFORMANCE REPORT	LOG	09	SUSPEND		
LOG7	DAILY EQUIPMNT RNG HOURS	LOG	09	DEMAND		
LOG8	WEKLY EQUIPMNT RNG HOURS	LOG	09	SUSPEND		
LOG9	MNTHLY EQUIPMNT RNG HOURS	LOG	09	DEMAND		
LOGMON	MONDAY-DAILY REPORT	LOG	11	SMTWTFS	08:05	00:00
LOGTUE	TUESDAY-DAILY REPORT	LOG	12	SMTWTFS	08:05	00:00
LOGWED	WEDNESDAY-DAILY REPORT	LOG	13	SMTWTFS	08:05	00:00
LOGTHU	THURSDAY-DAILY REPORT	LOG	14	SMTWTFS	08:05	00:00
LOGFRI	FRIDAY-DAILY REPORT	LOG	15	SMTWTFS	08:05	00:00
LOGSAT	SATURDAY-DAILY REPORT	LOG	16	SUSPEND		
LOGSUN	SUNDAY-DAILY REPORT	LOG	17	SUSPEND		
LOG17	DAILY REPORT(NEW)	LOG	10	SUSPEND		

CANCEL
PRINT

Honeywell

15 Mar 18 14:29:06 10

SYSTEM MENU

- | | |
|--|---|
| <input type="checkbox"/> ORGANIZATIONAL SUMMARY MENU | <input type="checkbox"/> REPORT/LOG/TREND/JOURNAL MENU |
| <input type="checkbox"/> REAL TIME JOURNAL ASSIGNMENTS | <input type="checkbox"/> EVENT HISTORY MENU |
| <input type="checkbox"/> OVERVIEW EDIT DISPLAY | <input type="checkbox"/> PROCESS VARIABLE RETRIEVAL |
| <input type="checkbox"/> GROUP EDIT DISPLAY | <input type="checkbox"/> REMOVABLE MEDIA INITIALIZATION |
| <input type="checkbox"/> CLEAR SCREEN | |
| <input type="checkbox"/> NCF STATUS | |