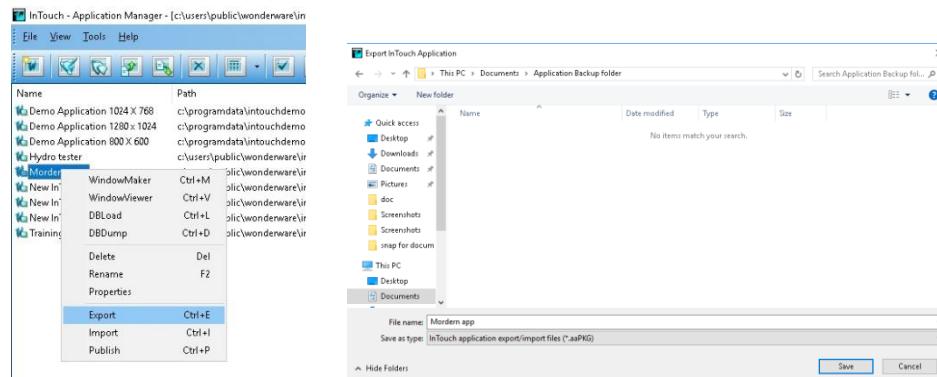


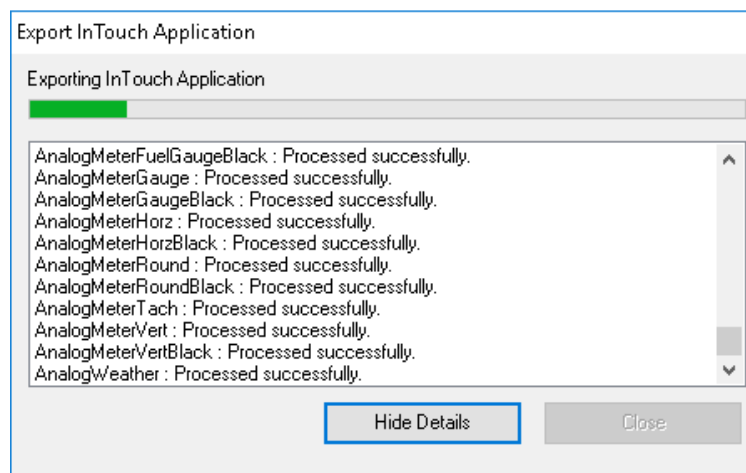
Backup and Restoring Modern application

1. Backup of the Modern application

To take Backup of the Modern application click on export and select location where you want to save .aapkg file



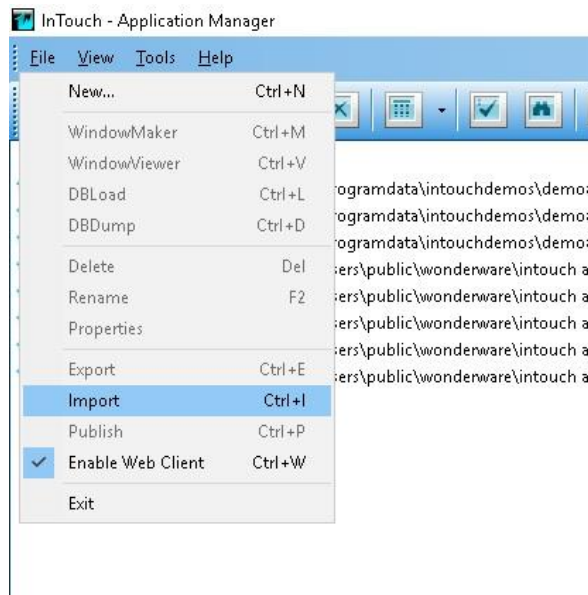
By clicking on save it will start exporting.



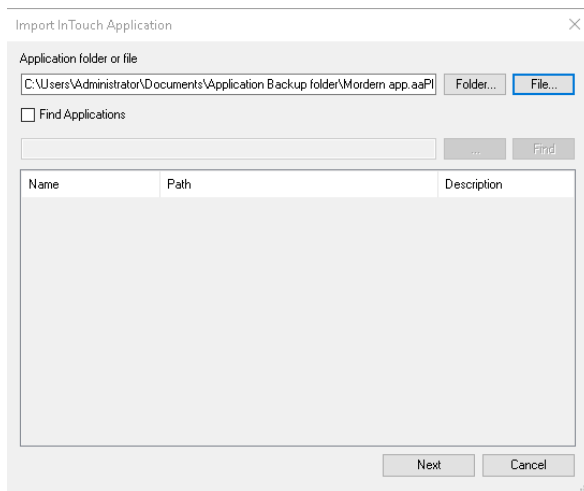
Note: .aapkg stands for Archetra application package

2. Restoring Modern application

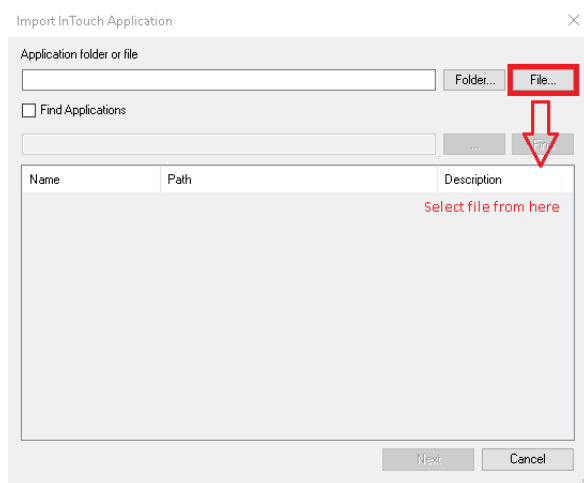
1. Open to application manager go to file > import option



2. Select .aapkg file




3. Click on next



4. It will create new application enter directory application name

Create New Application




This wizard will help you create and define a new InTouch Application quickly and easily.

Enter the base path where you want to store all your InTouch applications

☒ Set As Default Directory

< Back **Next >** Cancel Help

Create New Application



Enter the directory where you want the application to be created.

Click 'Next' to continue.

Select target resolution:

Screen Resolution


Width :

Height :

Aspect Ratio :

< Back **Next >** Cancel Help

Create New Application ✕



Enter a name and description of the InTouch Application.
Click 'Finish' to continue.

Name:

Description:

< Back **Finish** Cancel Help

Create New Application

Creating InTouch Application

Creating Galaxy 'G72fb5632d354155bb8006d4714f37ce' on 'WIN-LF0MDF2H98I' ... with Security not enabled
Cleaning up File and Global Data Repositories...
Restore galaxy begin
Get database connection information
Get file repository information
Remove restore directory
Restore from backup files

Hide Details Close