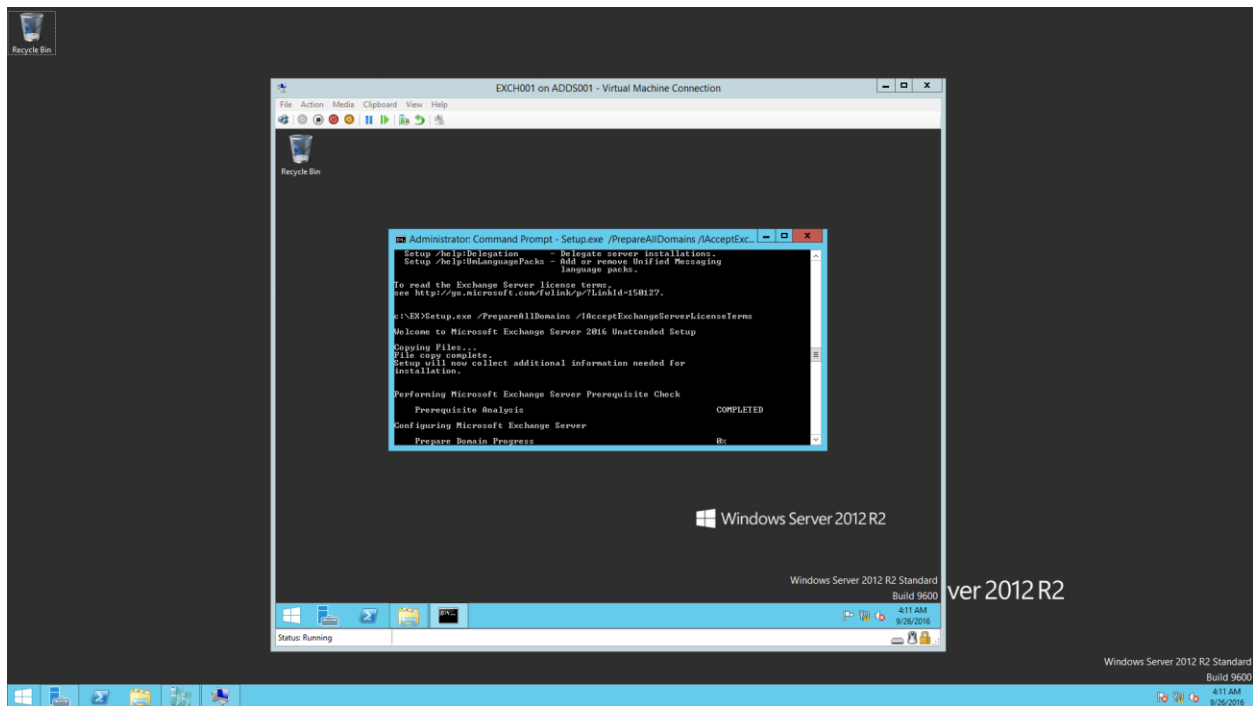
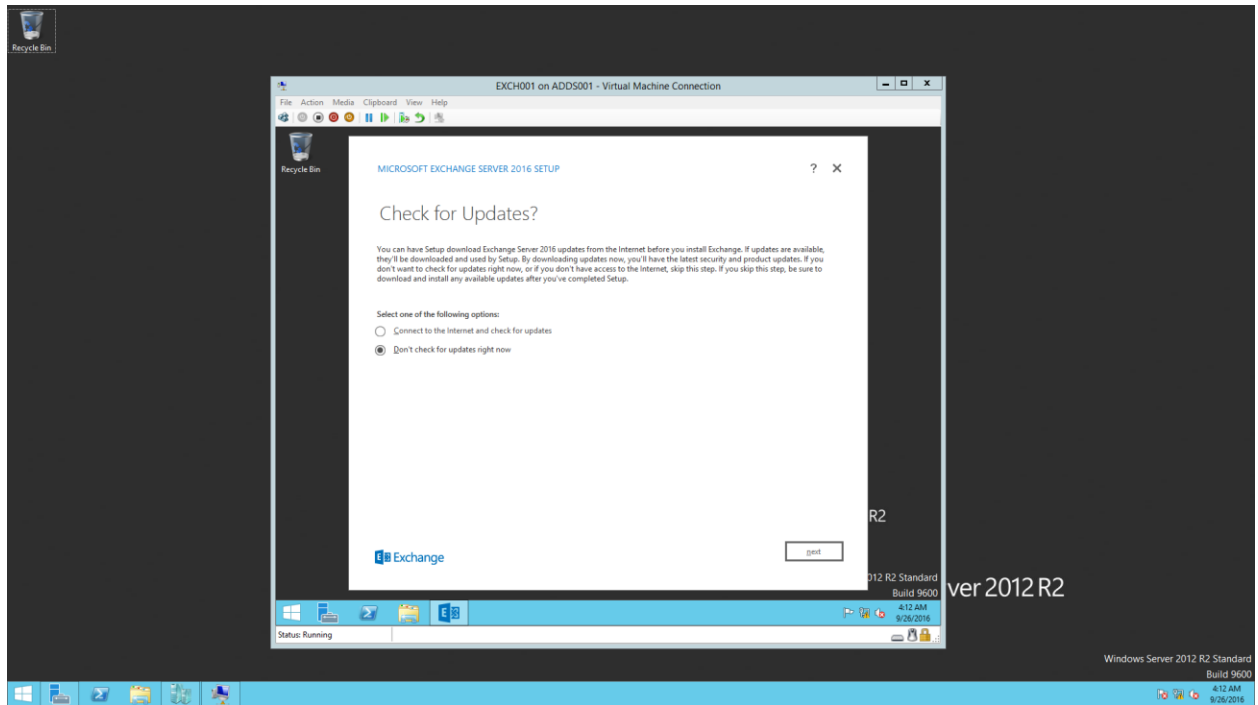


EXCHANGE Installation

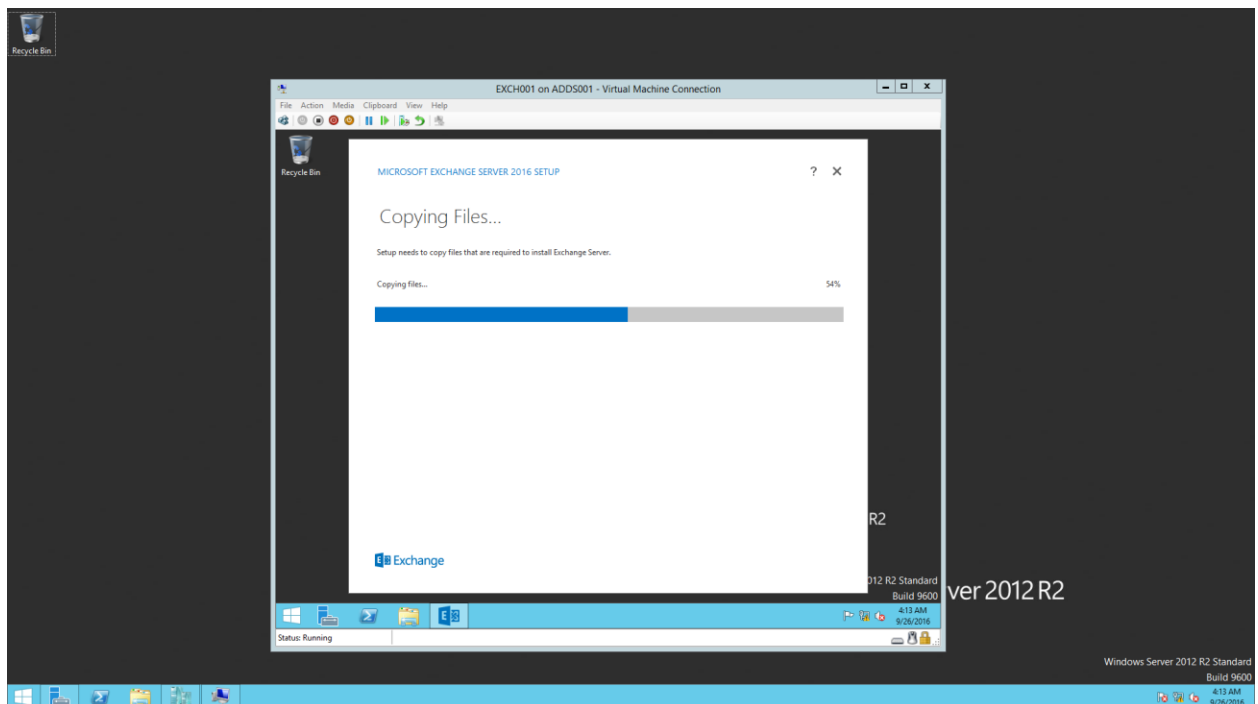
- (1) Run the Exchange setup on the server that you want to ready for Mail Server.



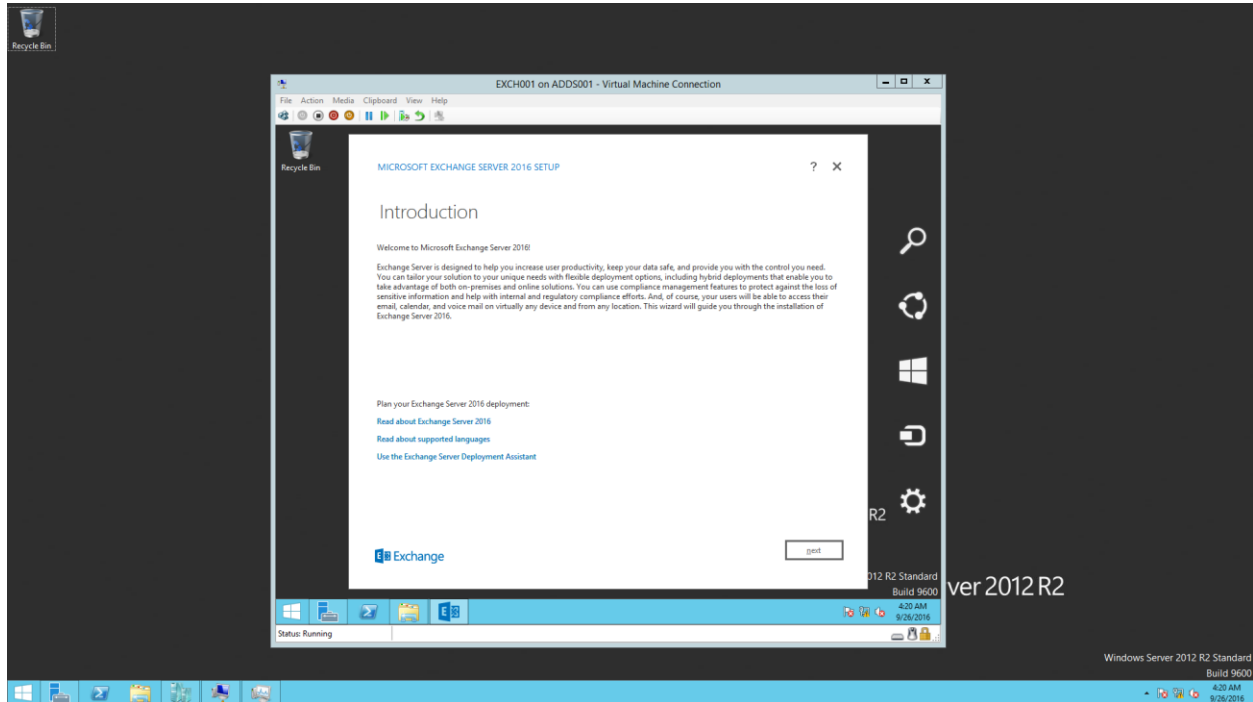
- (2) In Microsoft Exchange Server 2016 Setup, click "Don't check for updates".



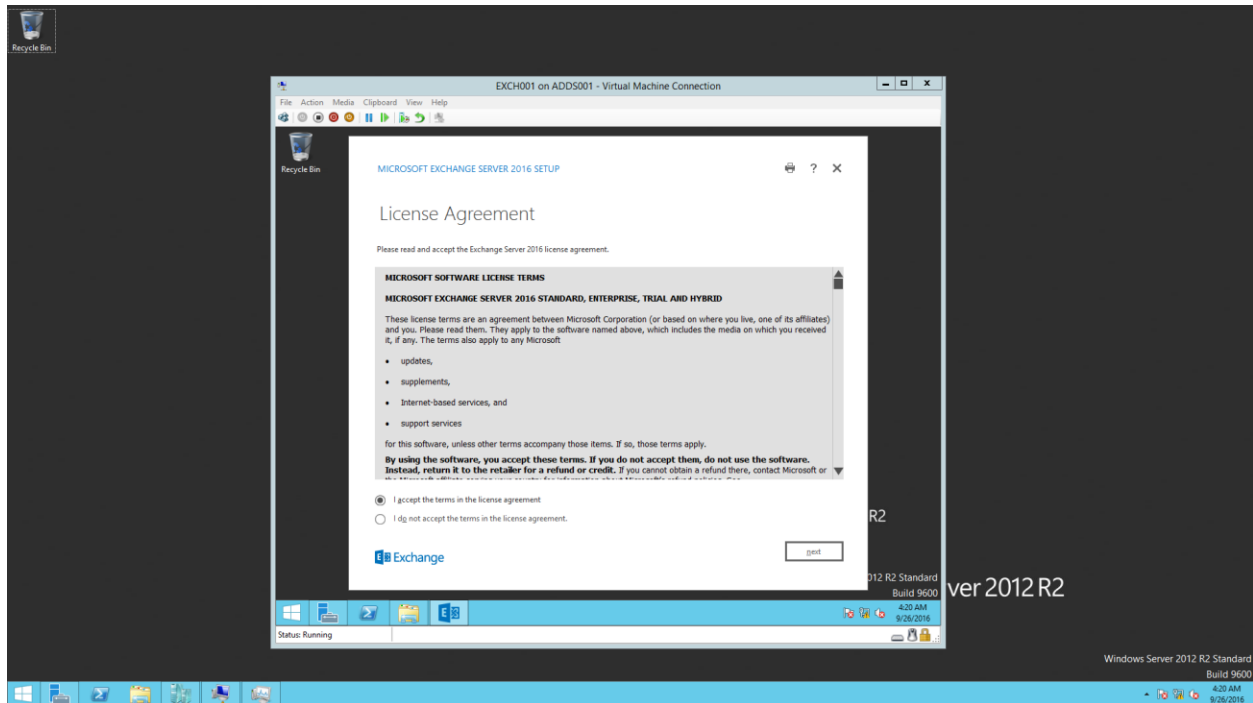
(3) Once the setup is finished copying files on the **Copying Files** page, click **Next**.



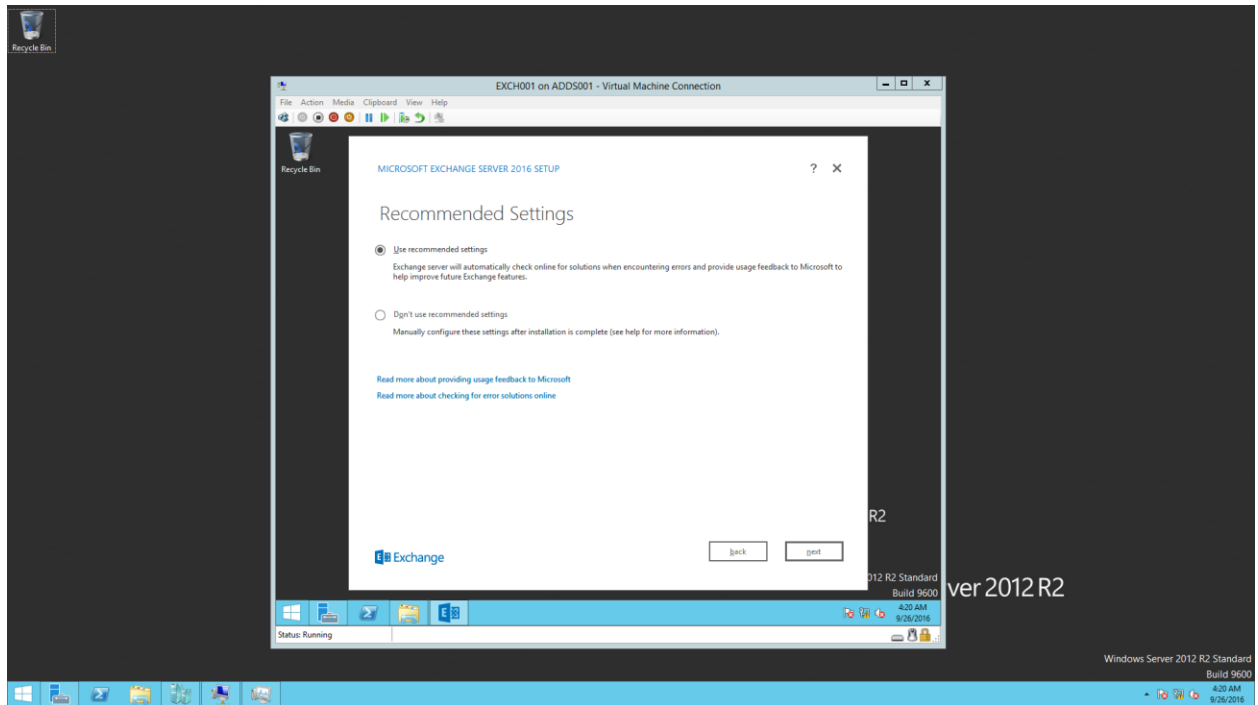
The **Introduction** page gives additional guidance for the installation procedure. Review the content and Click **next** to continue.



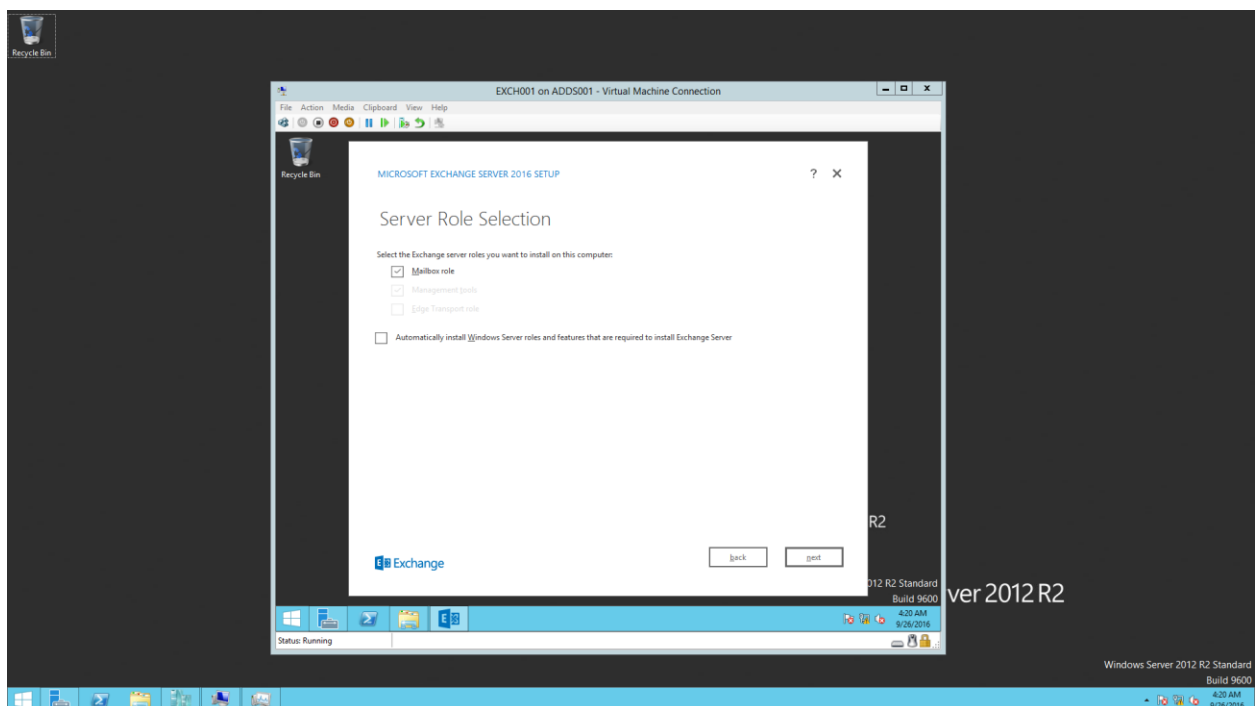
- (4) On the **License Agreement** page, review the terms. If you agree to the terms, select **I accept the terms in the license agreement**, and then click **next**.



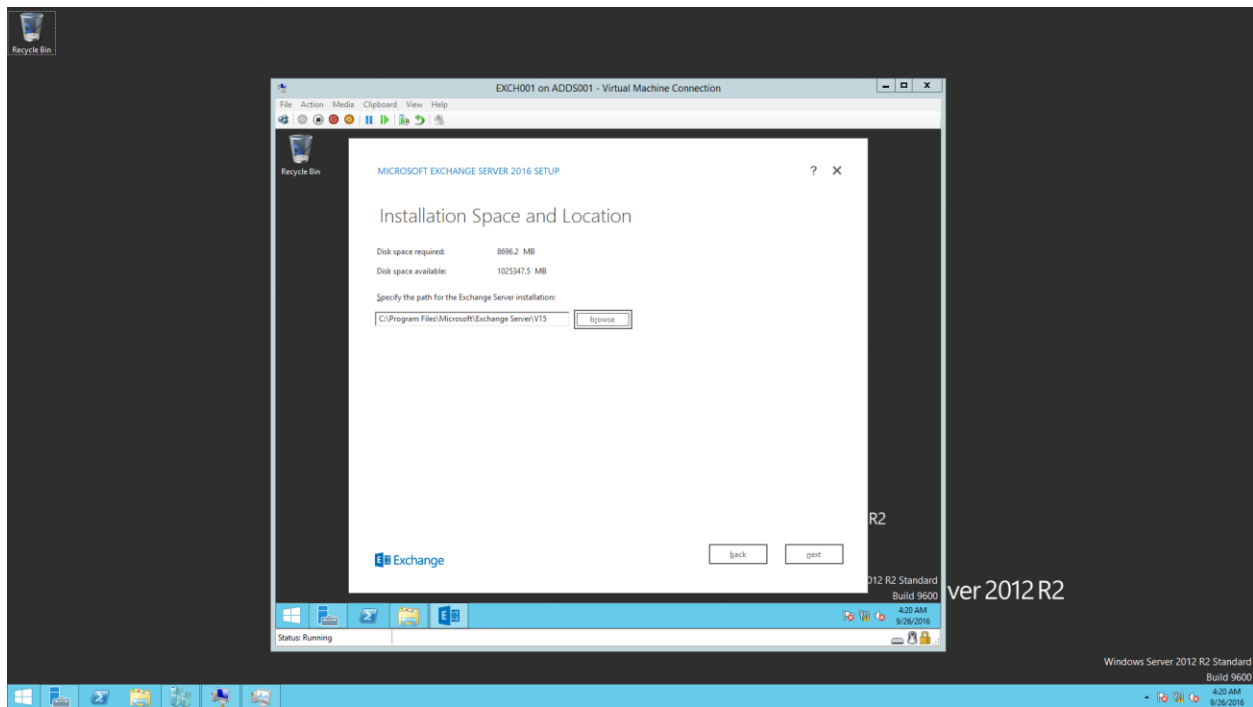
- (5) On the **Recommended Settings** page, select whether you want to enable or disable the Exchange Error resolution and feedback feature. The option will either enable or disable automatically check for resolutions for any errors that occurs while the setup is running and sends Microsoft feedback. Click **Next** to proceed.



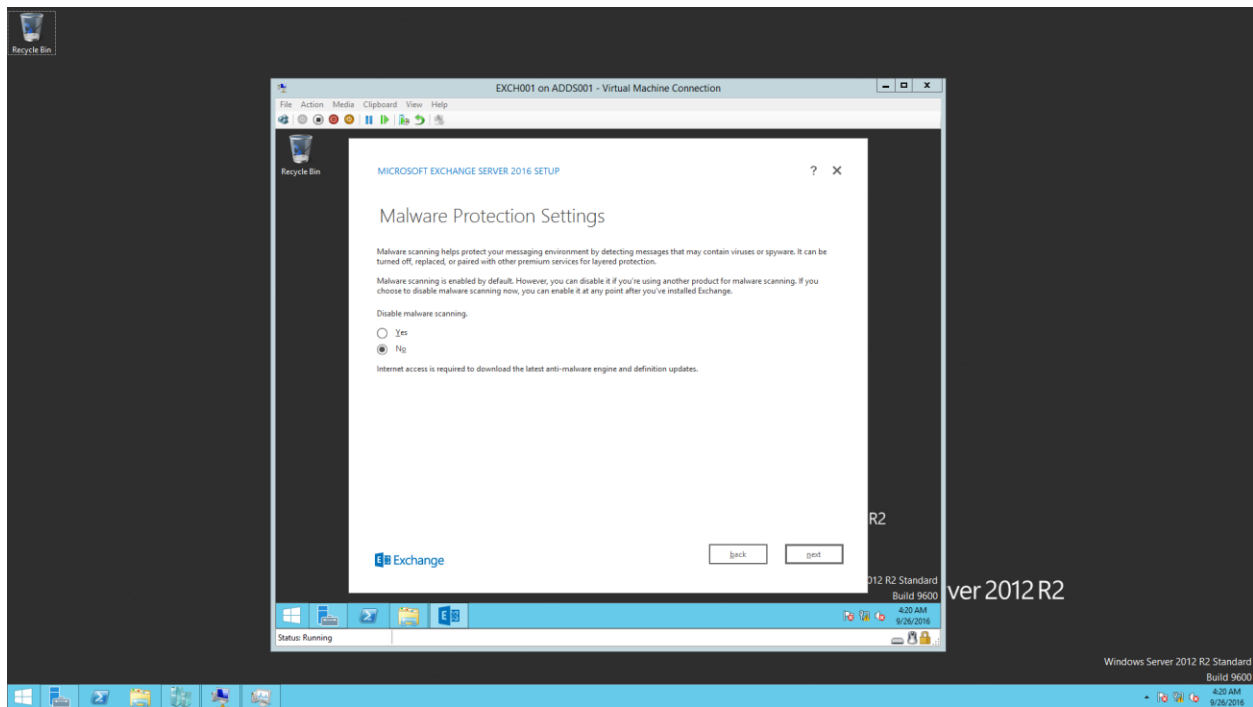
- (6) On the Server Role Selection page, choose what server role (Here, “ Mailbox Role”.you want to install.



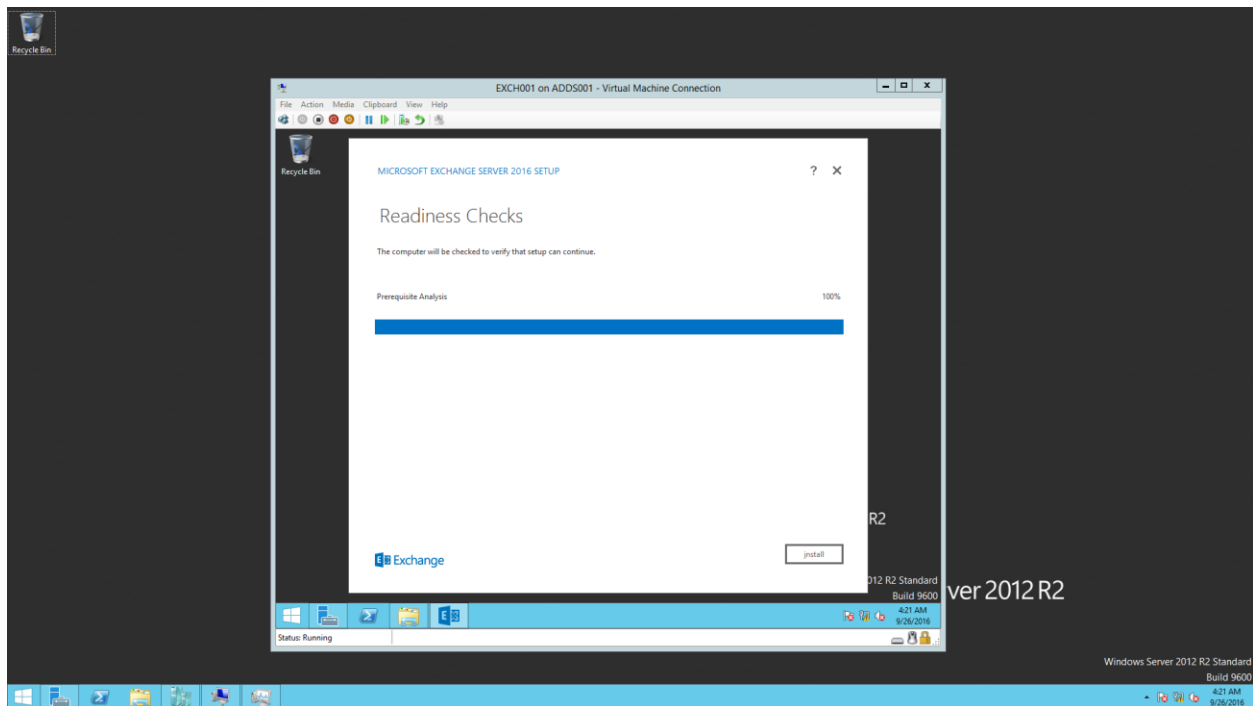
- (7) On the **Installation Space and Location** page, either accept the default installation location or click Browse to choose a new location with adequate storage space.



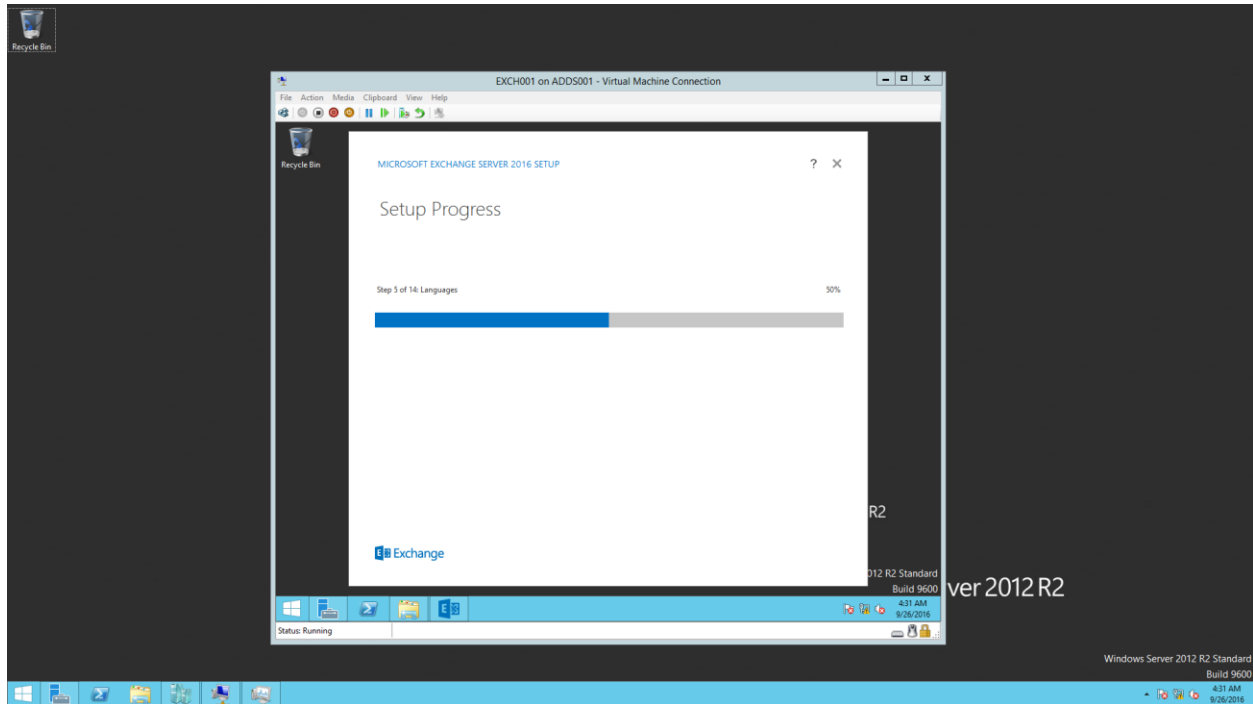
- (8) If installing the Mailbox role, a **Malware Protection Settings** page will appear. Choose whether to enable or disable malware scanning and click **Next**.



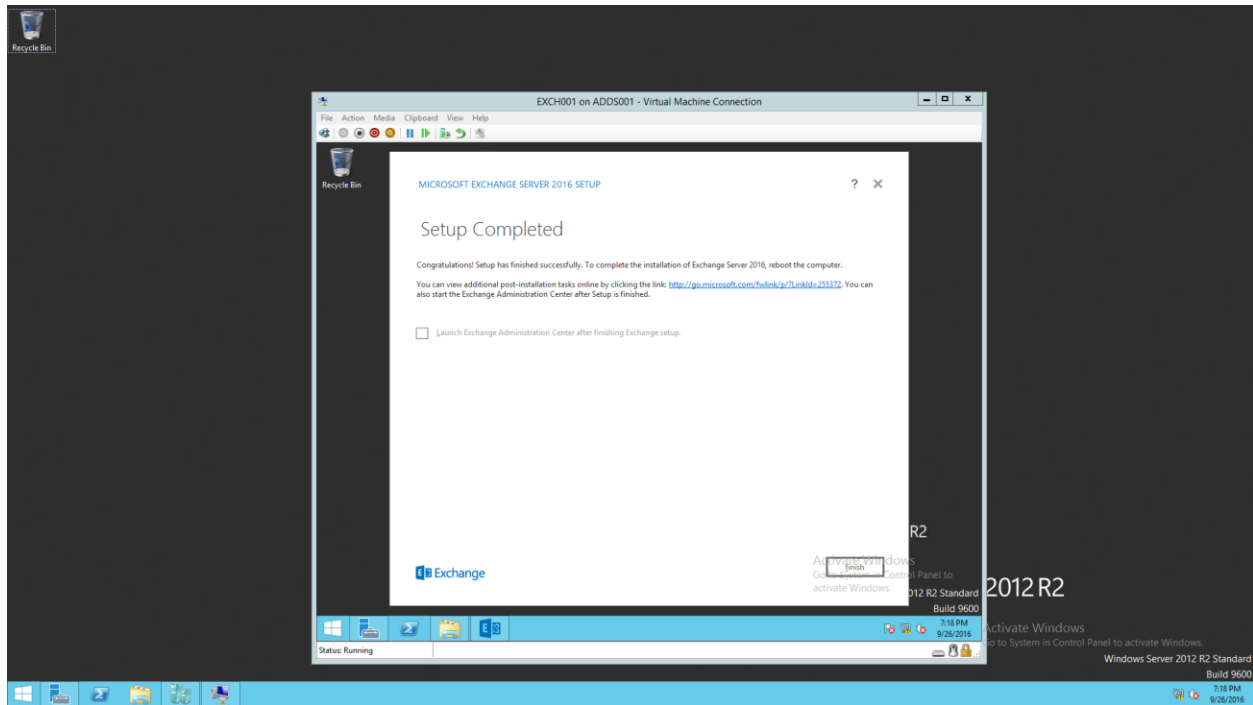
- (9) On the **Readiness Checks** page, view the status to determine if the organization and server role prerequisite checks completed successfully. If successful, click **Install** to proceed.



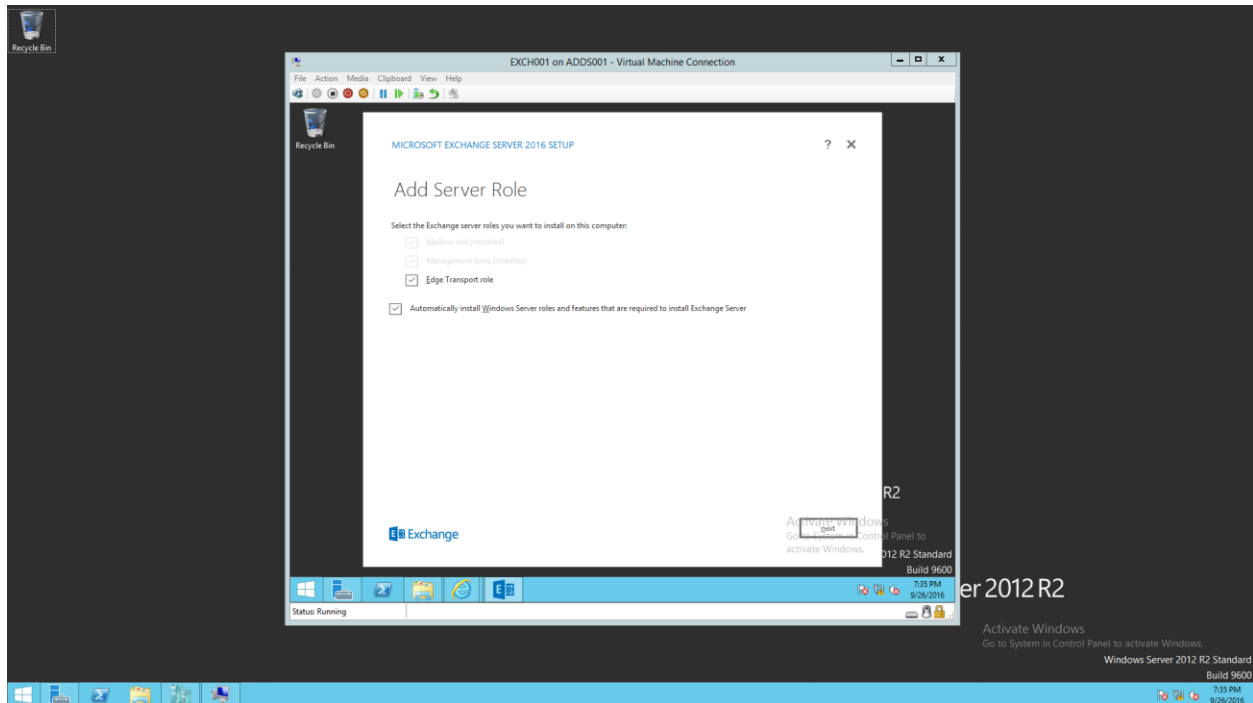
(10) The installation will be performed.



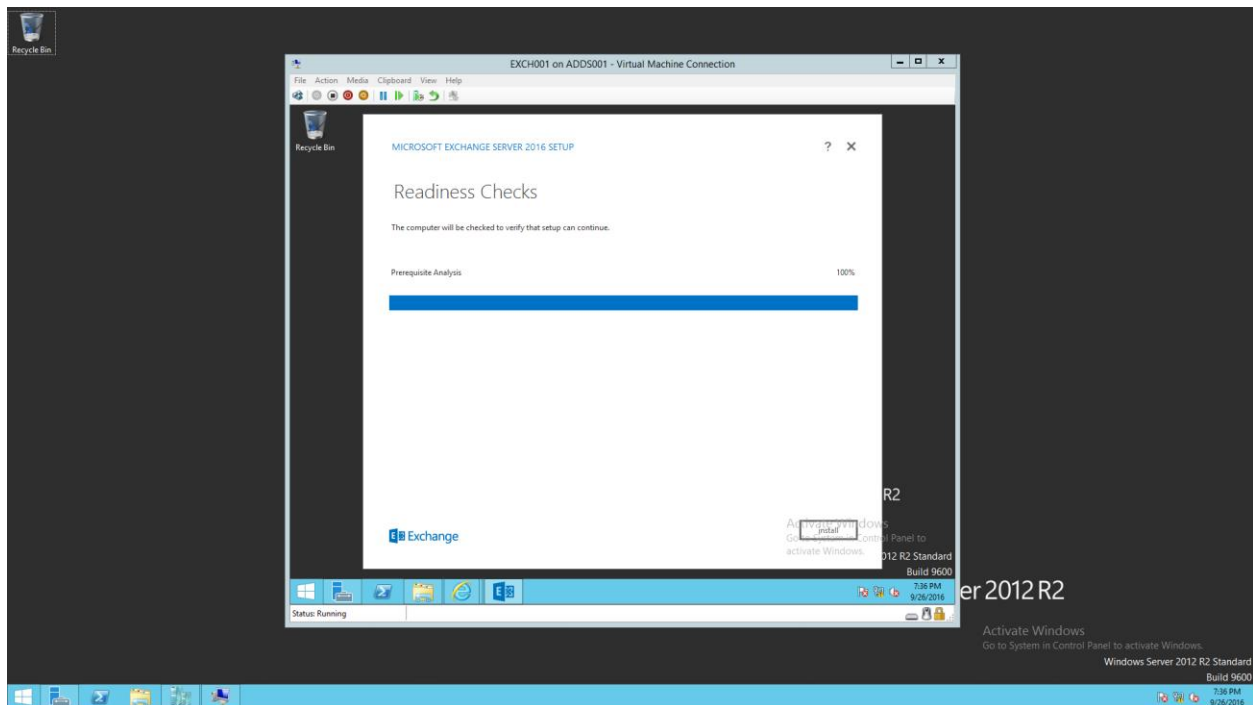
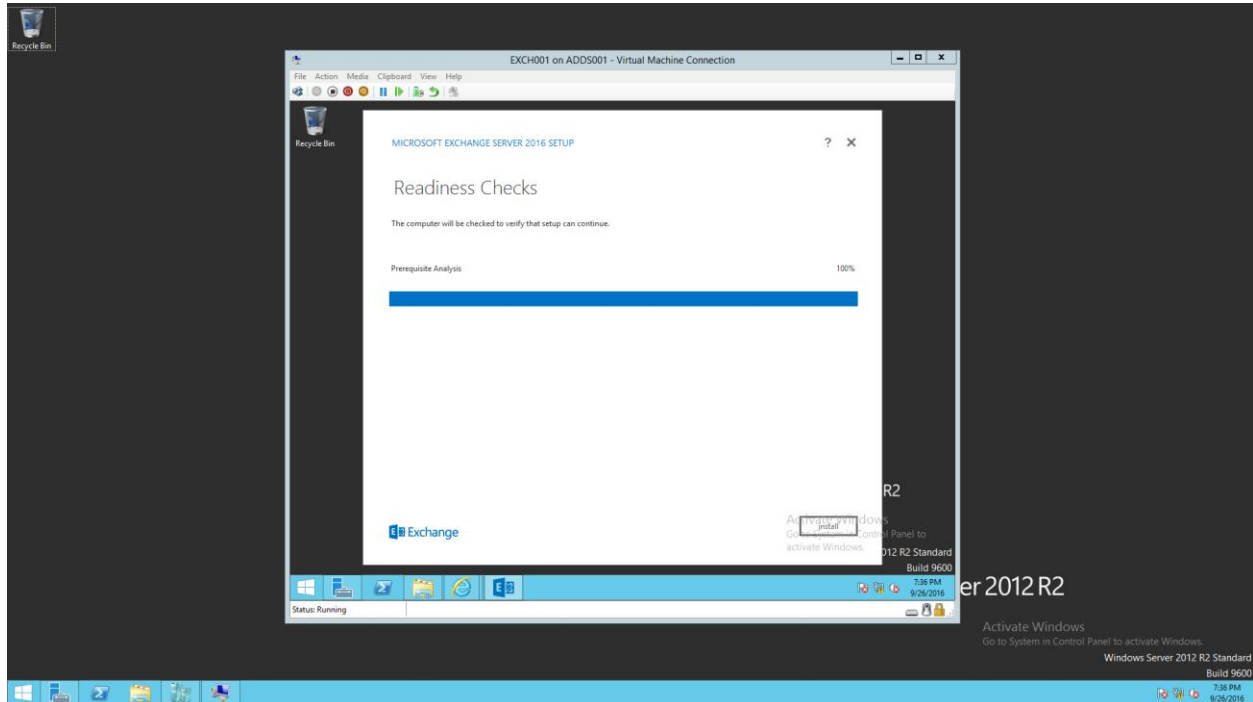
(11) Once the setup completes installing all the components, the **Setup Completed** page will be displayed. Select **Finish**.

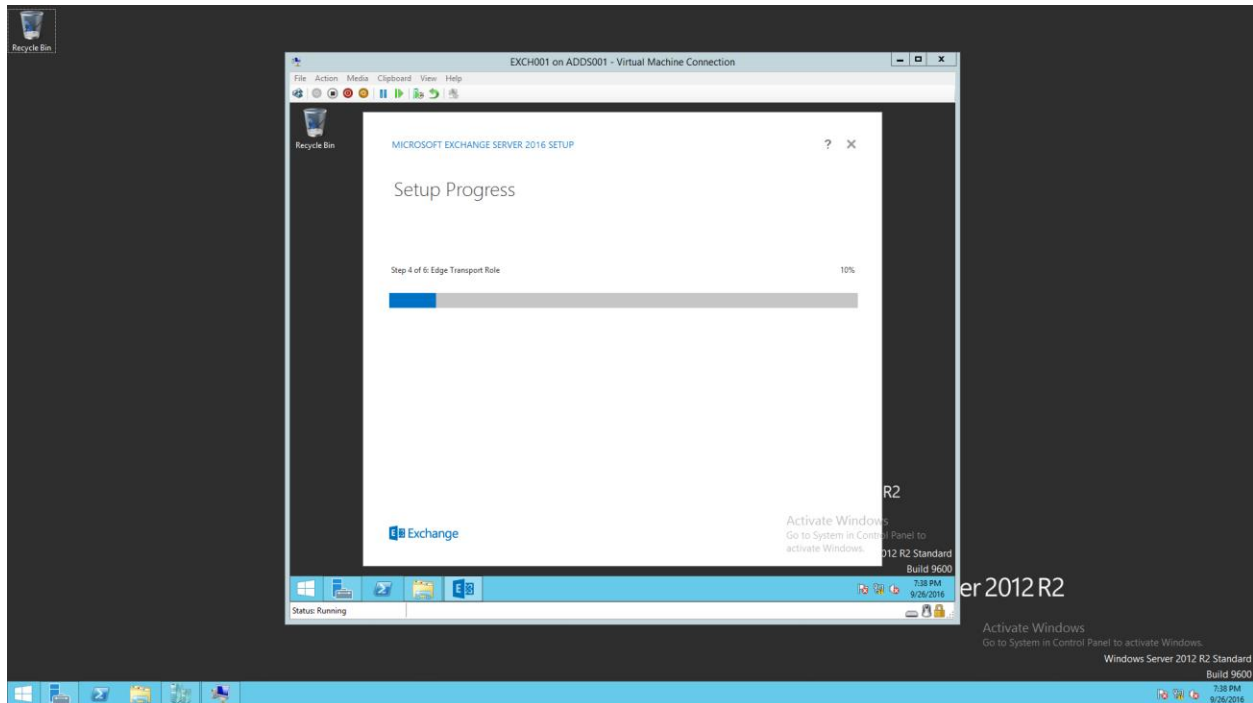


(12) In Add Server Role, select “ Edge Transport Role “.



(13) Let the prerequisites to be completed.



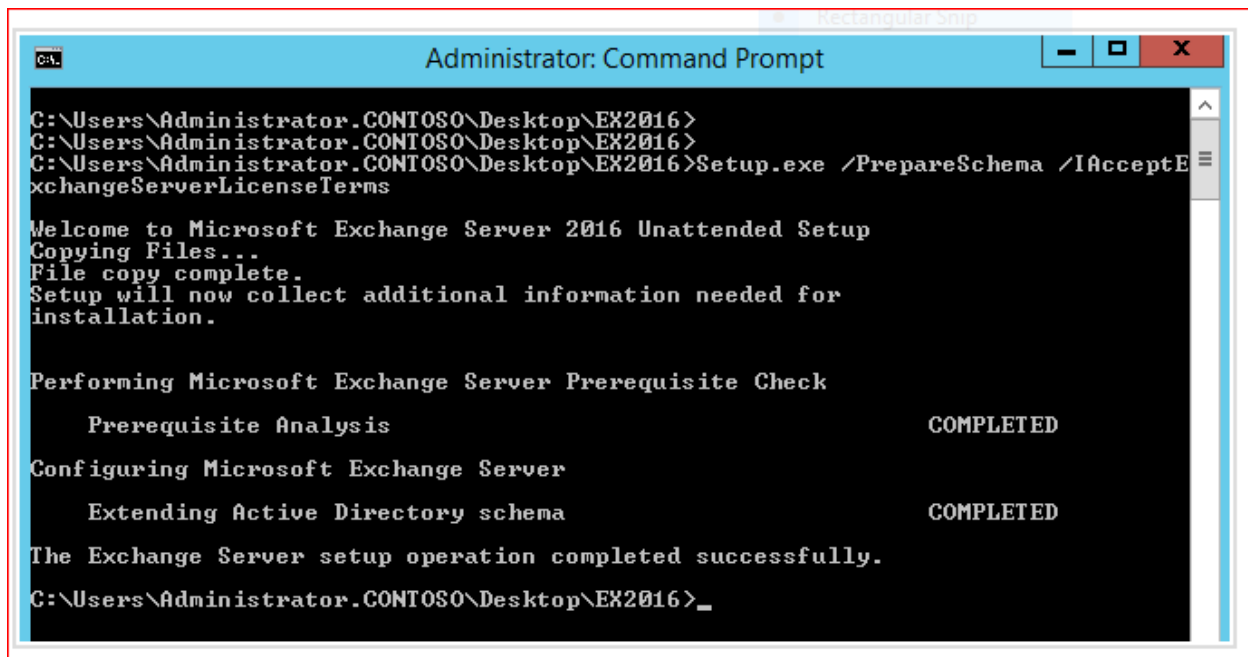


BY COMMAND PROMPT:

Preparing Active Directory Schema:

(1) Open Command prompt as administrator & type following command :

Setup.exe /PrepareSchema /IAcceptExchangeServerLicenseTerms



```
Administrator: Command Prompt
C:\Users\Administrator.CONTOSO\Desktop\EX2016>
C:\Users\Administrator.CONTOSO\Desktop\EX2016>
C:\Users\Administrator.CONTOSO\Desktop\EX2016>Setup.exe /PrepareSchema /IAcceptExchangeServerLicenseTerms

Welcome to Microsoft Exchange Server 2016 Unattended Setup
Copying Files...
File copy complete.
Setup will now collect additional information needed for
installation.

Performing Microsoft Exchange Server Prerequisite Check
    Prerequisite Analysis                                COMPLETED

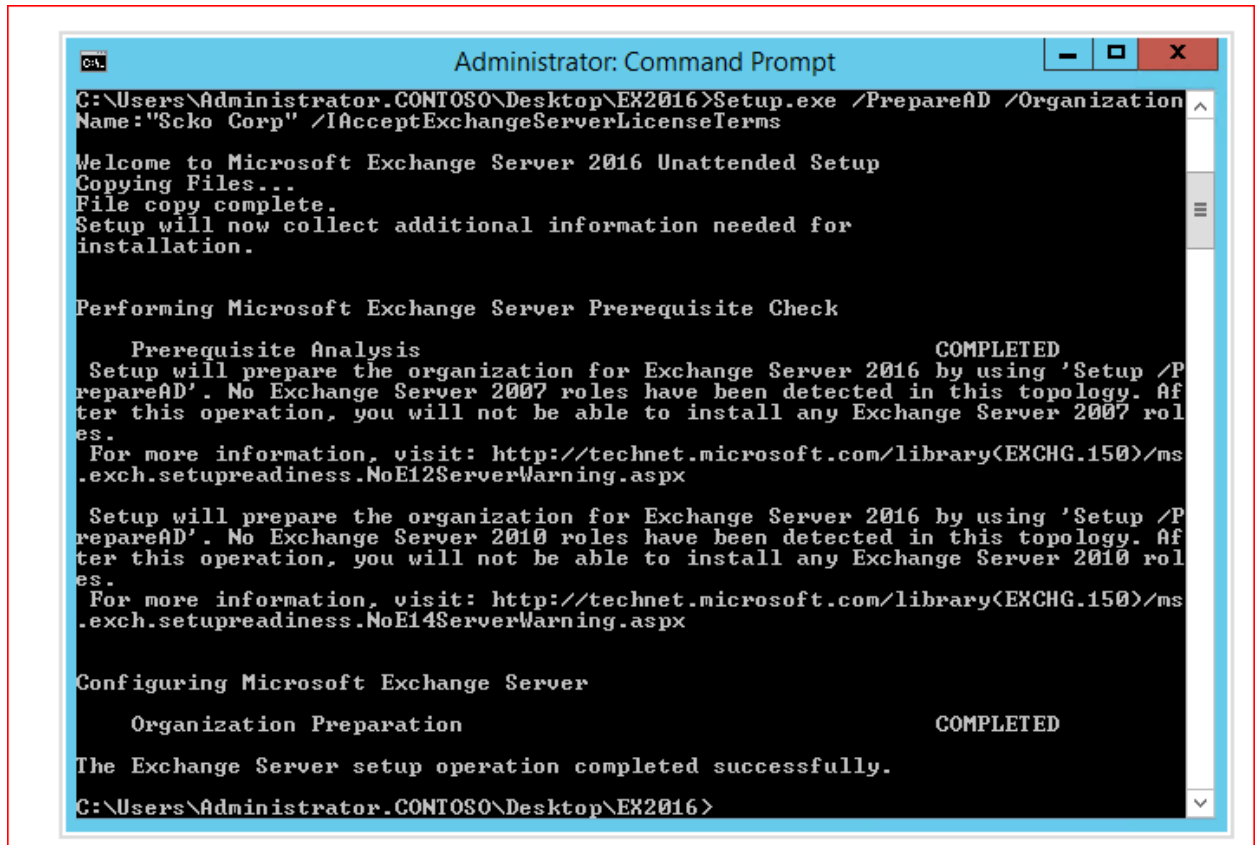
Configuring Microsoft Exchange Server
    Extending Active Directory schema                    COMPLETED

The Exchange Server setup operation completed successfully.
C:\Users\Administrator.CONTOSO\Desktop\EX2016>_
```

For Preparing Active Directory :

(1)Open Command prompt as administrator & type following command :

Setup.exe /PrepareAD /OrganizationName:"EXCH2016"
/IAcceptExchangeServerLicenseTerms



```
Administrator: Command Prompt
C:\Users\Administrator.CONTOSO\Desktop\EX2016>Setup.exe /PrepareAD /Organization
Name:"Scko Corp" /IAcceptExchangeServerLicenseTerms

Welcome to Microsoft Exchange Server 2016 Unattended Setup
Copying Files...
File copy complete.
Setup will now collect additional information needed for
installation.

Performing Microsoft Exchange Server Prerequisite Check

Prerequisite Analysis COMPLETED
Setup will prepare the organization for Exchange Server 2016 by using 'Setup /P
repareAD'. No Exchange Server 2007 roles have been detected in this topology. Af
ter this operation, you will not be able to install any Exchange Server 2007 rol
es.
For more information, visit: http://technet.microsoft.com/library\(EXCHG.150\)/ms
-exch.setupreadiness.NoE12ServerWarning.aspx

Setup will prepare the organization for Exchange Server 2016 by using 'Setup /P
repareAD'. No Exchange Server 2010 roles have been detected in this topology. Af
ter this operation, you will not be able to install any Exchange Server 2010 rol
es.
For more information, visit: http://technet.microsoft.com/library\(EXCHG.150\)/ms
-exch.setupreadiness.NoE14ServerWarning.aspx

Configuring Microsoft Exchange Server

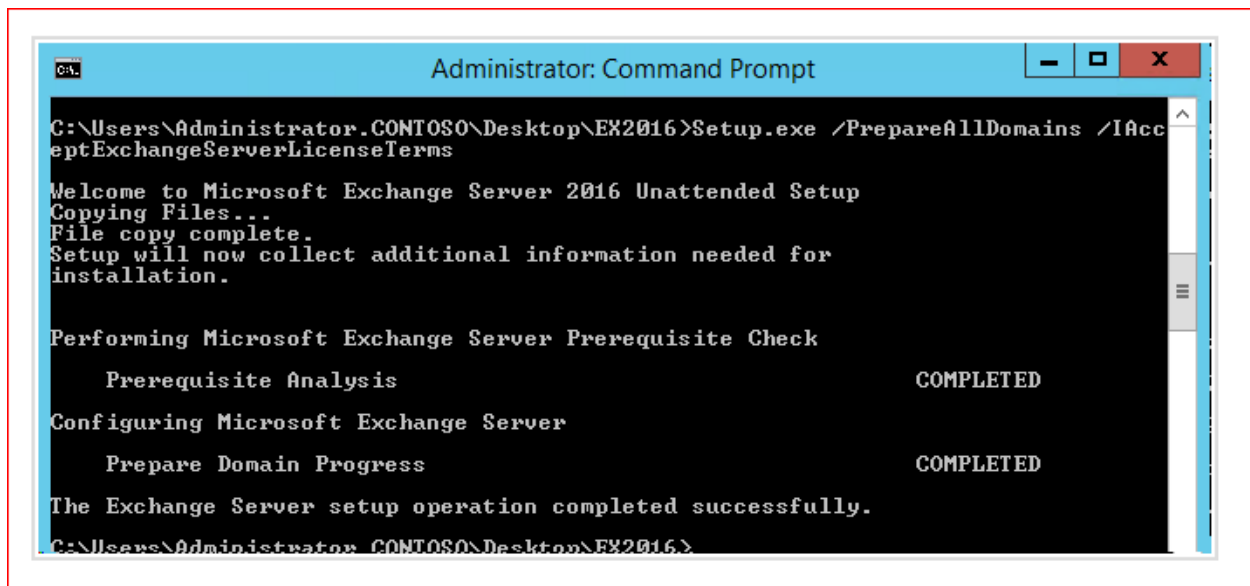
Organization Preparation COMPLETED

The Exchange Server setup operation completed successfully.
C:\Users\Administrator.CONTOSO\Desktop\EX2016>
```

For Preparing Domains:

(1)Open Command prompt as administrator & type following command :

Setup.exe /PrepareAllDomains /IAcceptExchangeServerLicenseTerms



```
C:\Users\Administrator.CONTOSO\Desktop\EX2016>Setup.exe /PrepareAllDomains /IAcceptExchangeServerLicenseTerms

Welcome to Microsoft Exchange Server 2016 Unattended Setup
Copying Files...
File copy complete.
Setup will now collect additional information needed for
installation.

Performing Microsoft Exchange Server Prerequisite Check
    Prerequisite Analysis                                COMPLETED
Configuring Microsoft Exchange Server
    Prepare Domain Progress                              COMPLETED
The Exchange Server setup operation completed successfully.
C:\Users\Administrator.CONTOSO\Desktop\EX2016>
```