



---

## TN ITE001 Installing InTouch Edge HMI



[ArticleBanner](#)

### **Description**

This article from InSource Solutions shows you how to install the InTouch Edge HMI.

- **Author: Daniel London**
- **Published: 05/22/2019**
- **Applies to: InTouch Edge HMI v8.1**

### **Details**

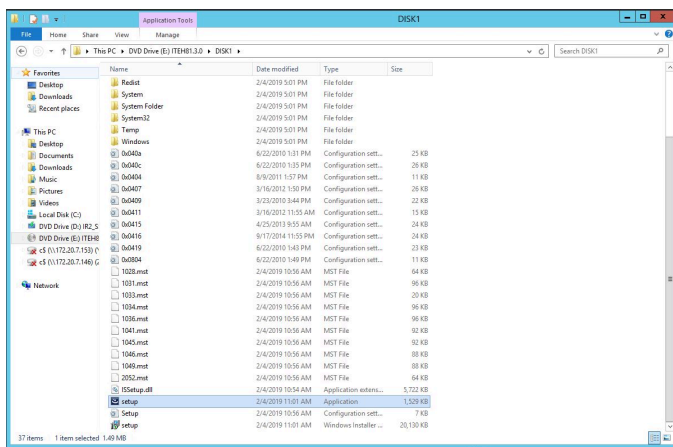
The steps below show you how to install InTouch Edge.

#### **NOTE:**

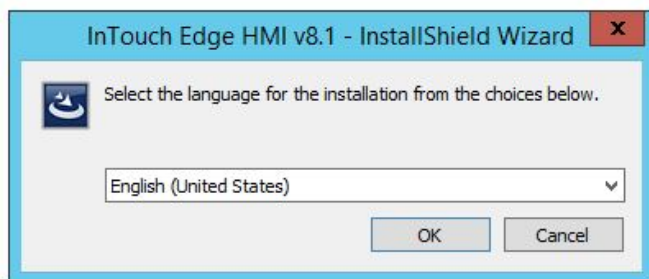
Microsoft .NET Framework 4.7.2 is required as part of the installation. If certain updates are not installed, it won't allow you to install the .NET component of the InTouch Edge HMI installer. If the component install fails, this [LINK](#) shows you how to install the Microsoft Updates prior to installing Edge.

1. Run the setup.exe inside of the media folder.

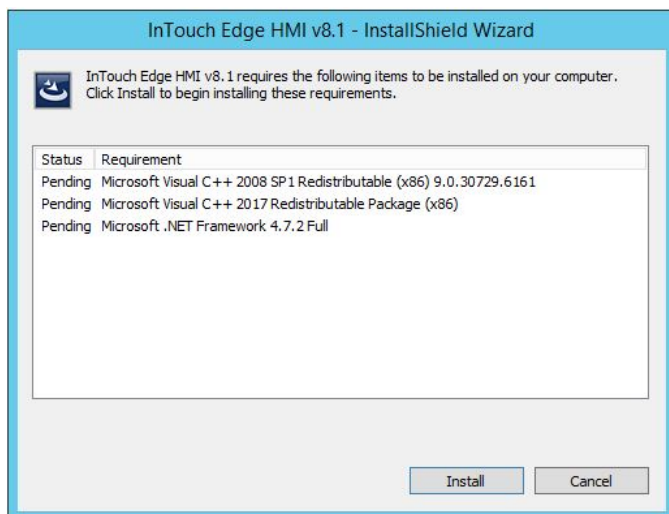




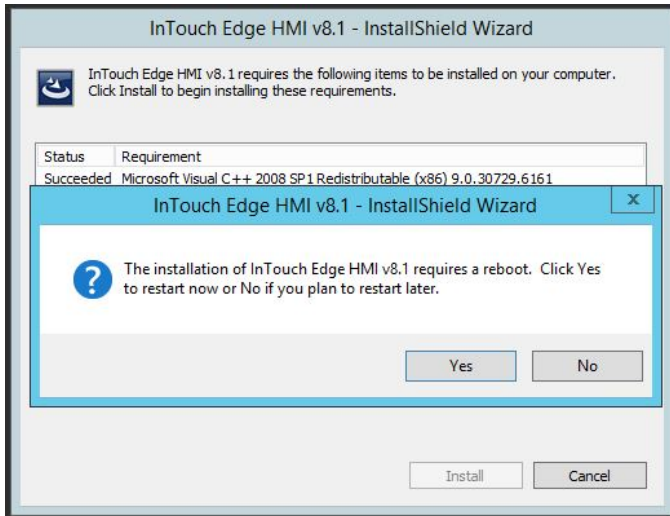
2. Select the language for the install.



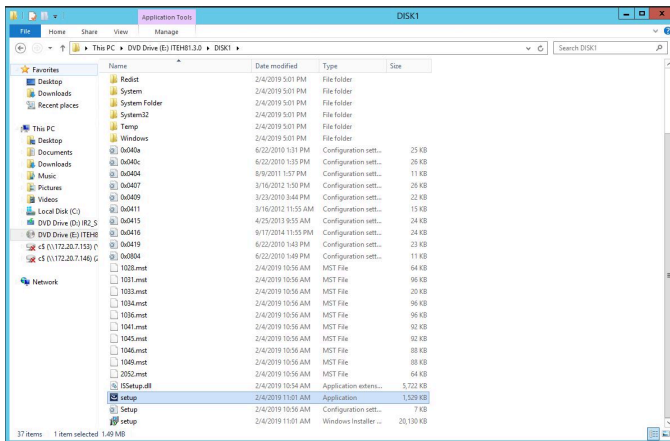
3. Install the prerequisites.



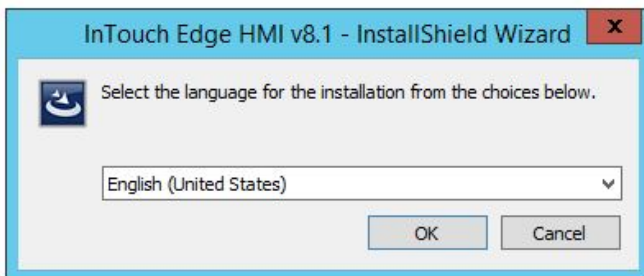
#### 4. Reboot after install the prerequisites.



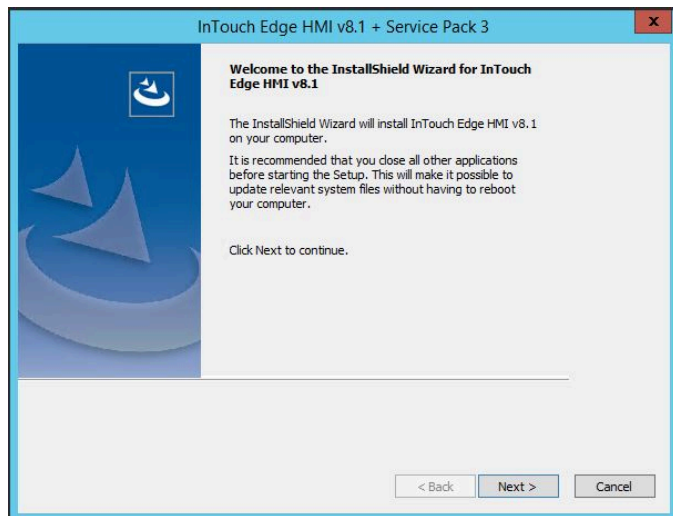
#### 5. Run the setup.exe inside of the media folder.



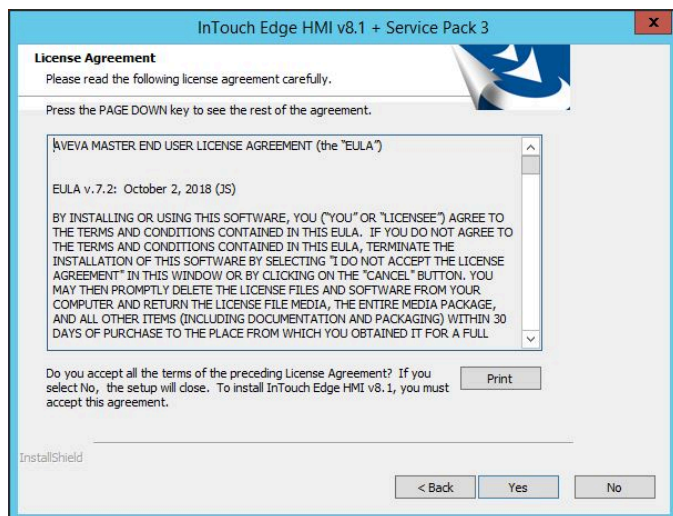
#### 6. Select the language for the install.



7. Click *Next*.

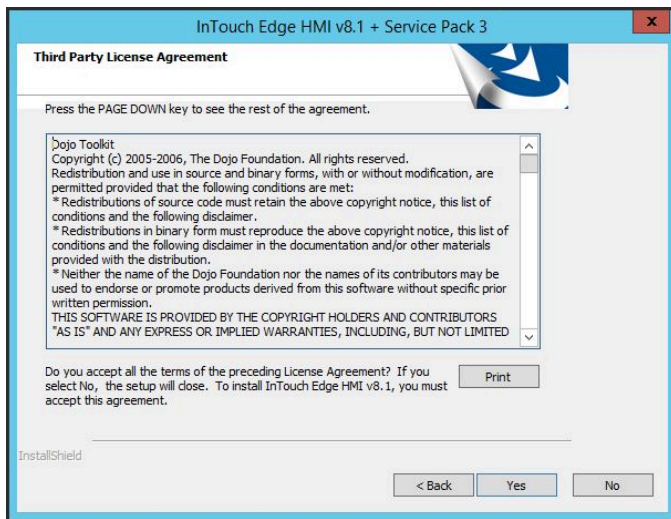


8. Click *Yes*.

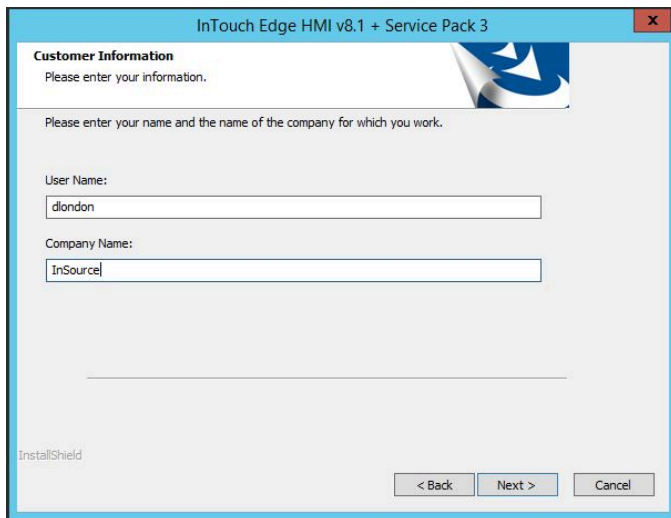


9. Click *Yes*.



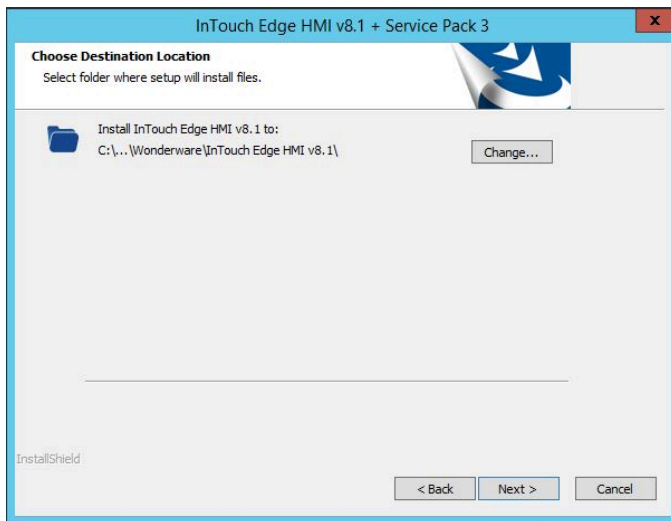


10. Enter a *User Name* and *Company Name*. Click *Next*.

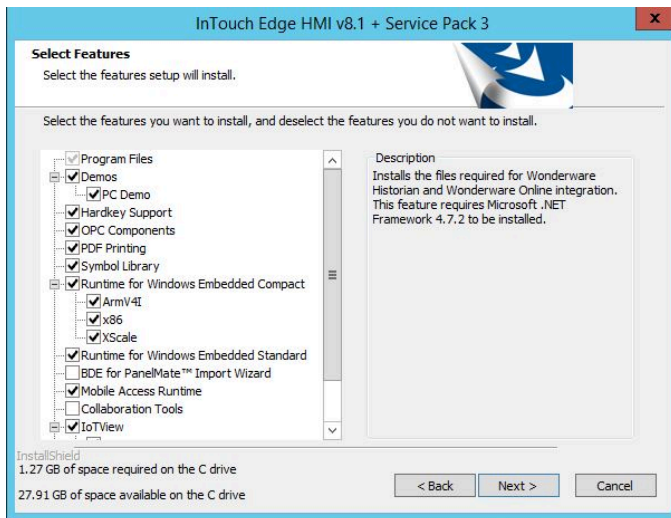


11. Accept the default installation path or specify a different one. Click *Next*.



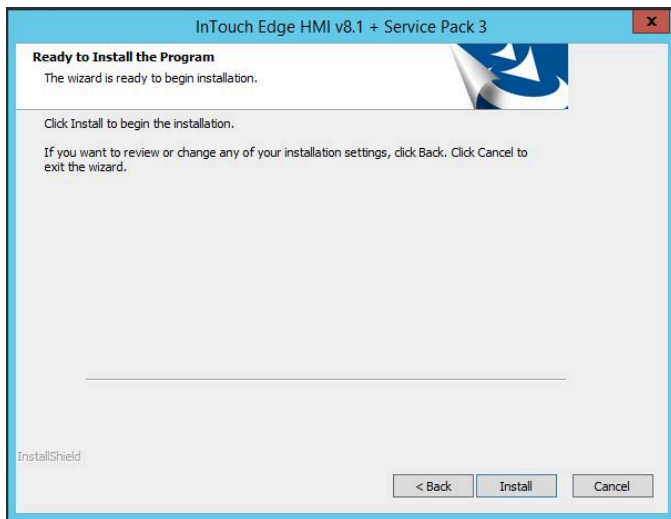


12. Select the products you want to install. Click *Next*.

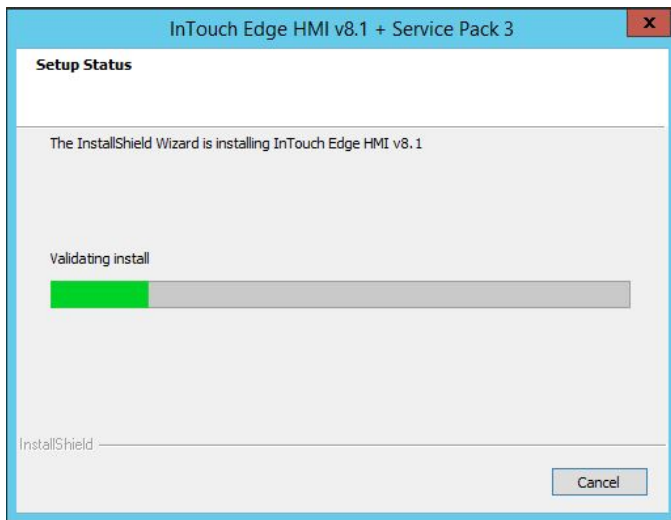


13. Click *Install*.



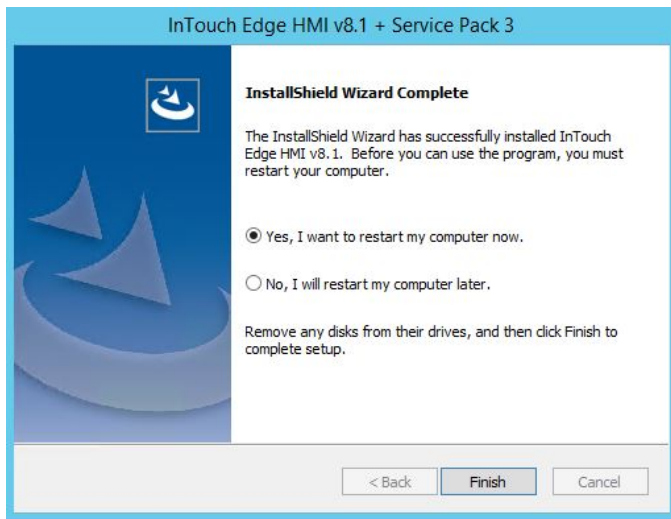


14. The installation will proceed.



15. When the install completes, select to reboot your computer and click *Finish*.





For information on how to license InTouch Edge after the install, please follow the link below:

<https://sw.aveva.com/support/intouch-hmi-activation>

