

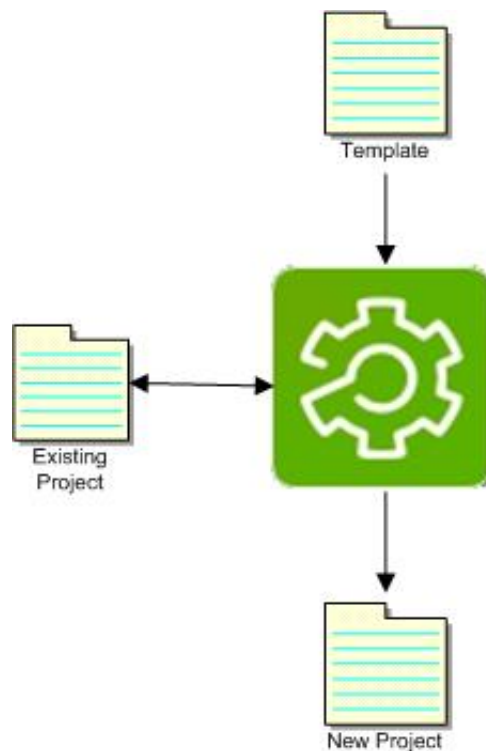
Templates

Using Templates

Templates are a way of creating a standard application that can be used as the basis for any new applications.

Taking the conveyor application that has been created, if an OEM or integrator creates many systems that have the same basic conveyor control system, this application can be saved as a template and used to create all new applications. This saves time recreating the basic application.

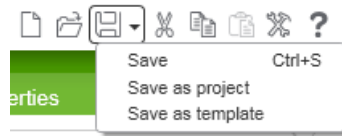
When an existing project is used to create a new project, the existing project may be accidentally overwritten when the new project is saved. The template is simply the project stored in a special format which can then be used to create new projects. When the new project is created from a template and saved, a new project must be created; the template cannot be overwritten.



Templates (cont.)

How to Create a Template

With a project loaded, select **Save As Template** from the **Save** drop-down menu.



This will save the project as a template. However, it will not be visible on the start page unless it is saved in the correct directory. Templates should be saved to the directory

`\Program Files\Schneider Electric\SoMachine Basic\Examples`

The template will then be visible from the start page.

Exercise - Templates

Learning Outcomes

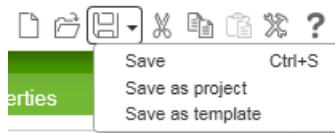
By the completion of this exercise you will:

- Create a SoMachine Basic Template
-

1 If SoMachine Basic is not running, start it and open the Conveyor Control Application.

2 Save the application as a template file.

- i. Drop down the menu next to the save button and select **Save as Template** from the menu.



- ii. Select the directory to save as:

\Program Files\Schneider Electric\SoMachine Basic\Examples

- iii. Click the **Save** button to save the template.
-

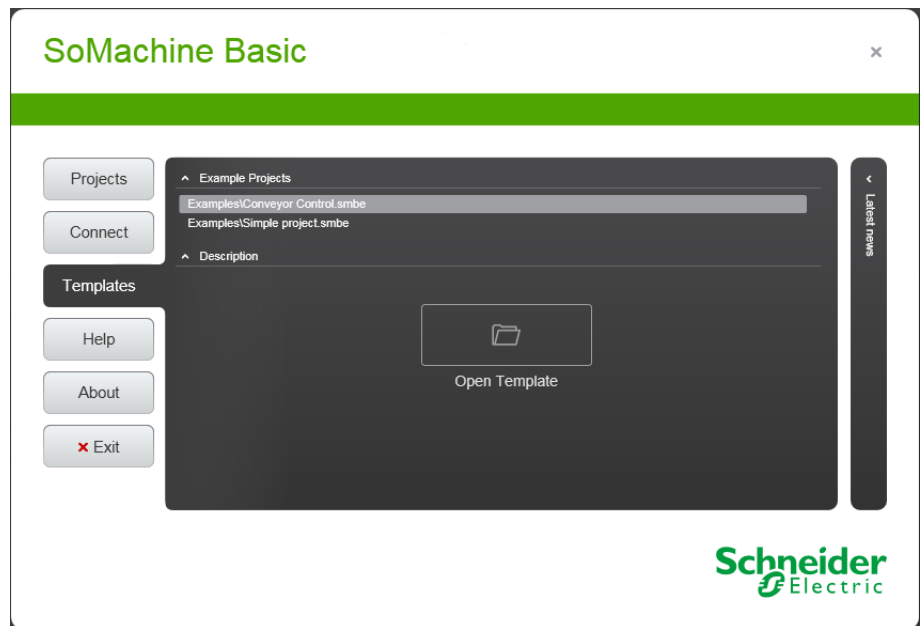
3 Create a new application based on the template.

- i. Click the SoMachine Basic icon to go to the start page.



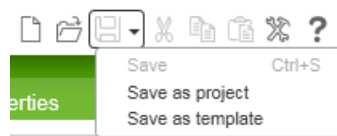
Exercise - Templates (cont.)

- ii. Select the **Templates** tab on the left hand side.



Select the Conveyor Control template and click the **Open Template** button.

- iii. When the new application has been created, drop down the save selection box.



Note that the Save option is greyed out and the template cannot be overwritten.

