
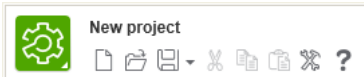


Customising the Software

Accessing the Settings

To access the settings, click the settings button  on the SoMachine Toolbar.

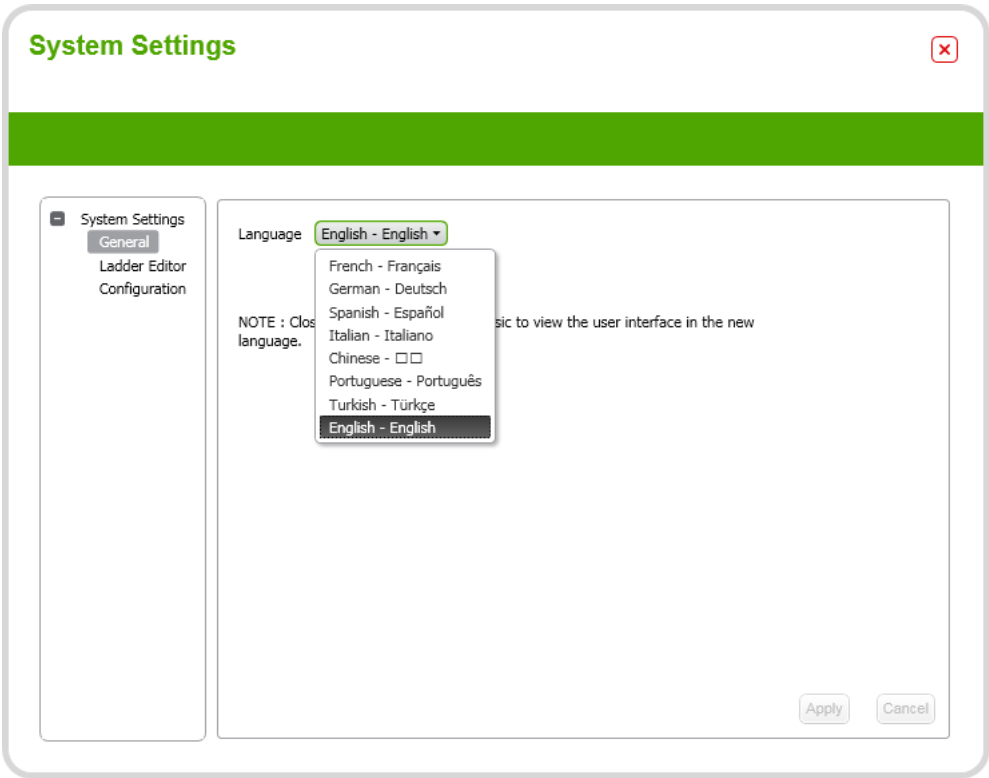


There are three sections in the settings. These are:

- General
- Ladder Editor
- Configuration

General Settings

The General Settings allow the language of SoMachine Basic to be changed. Current options are English, French and Italian.



After the language has been changed, SoMachine Basic must be restarted.

Settings (cont.)

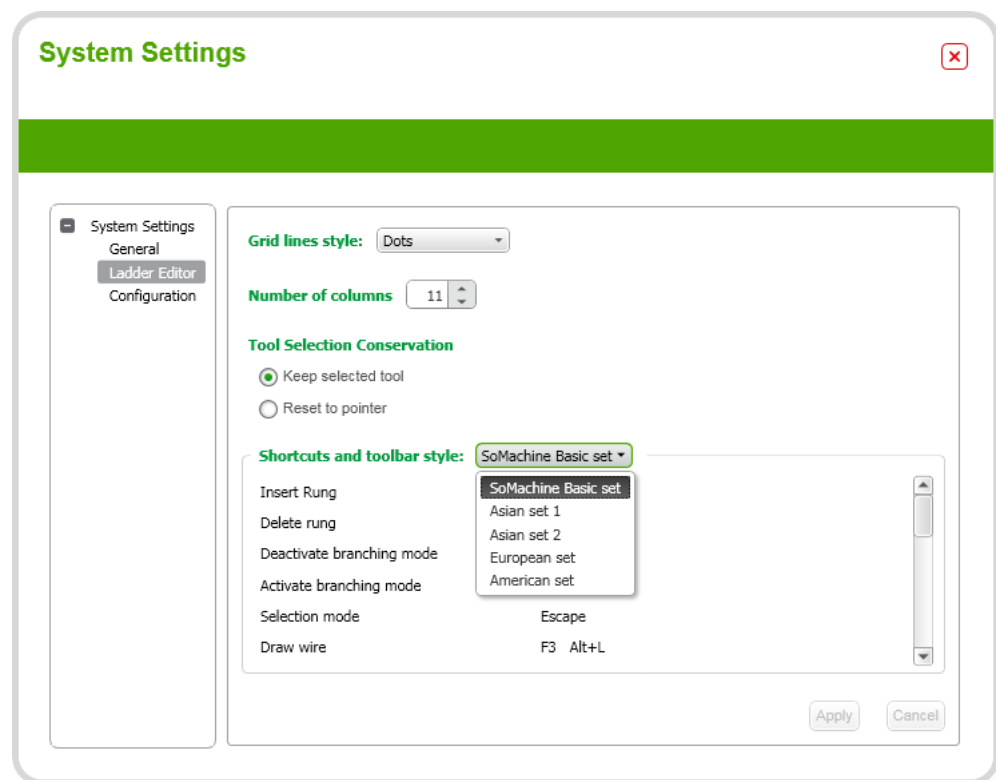
Ladder Editor Settings

The Ladder Editor Settings configure the behaviour of the ladder editor.

The ladder editor grid style can be changed to dots, dashed lines or solid lines

The number of columns in the ladder editor can be chosen by setting a value from 11 to 30.

The tool selection setting determines what happens in the ladder editor when an object has been placed on a rung. Keep selected tool will allow multiple objects of the same type to be placed without having to reselect the object from the toolbar. This is useful for placing multiple contacts. Reset to pointer will place one object then reset to the pointer so another action can be carried out.

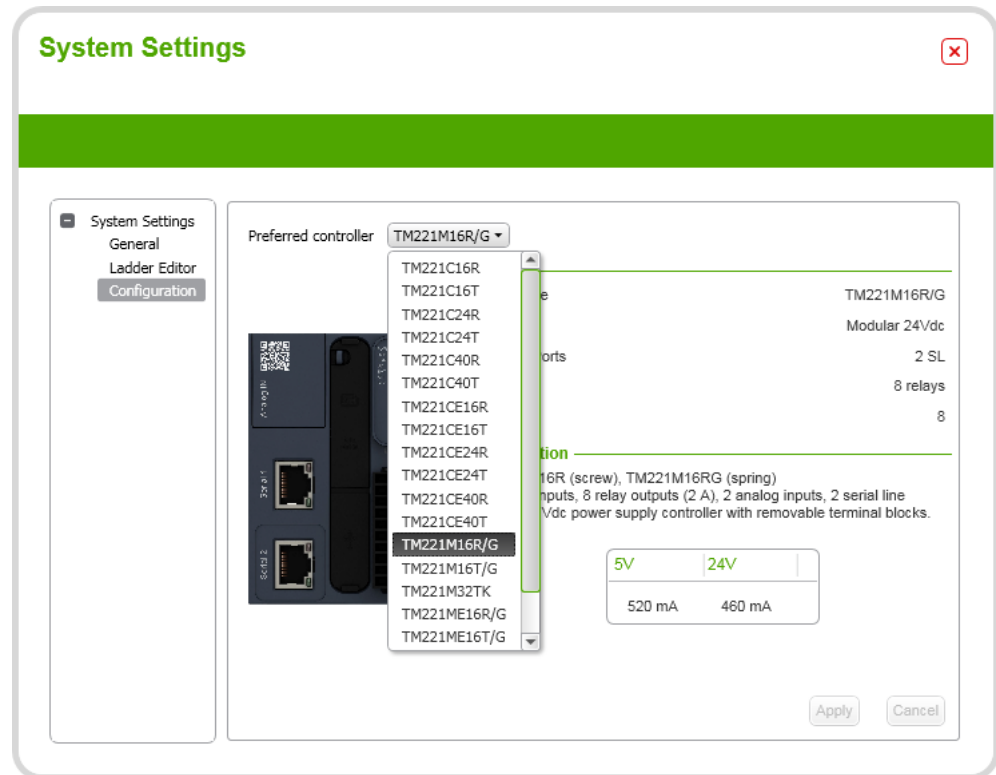


The shortcut and toolbar style can be changed to either the standard SoMachine Basic style or an Asian/European/American style. These alternative styles are similar to other programming software shortcuts and toolbars making programming in SoMachine Basic easier for engineers who are used to other programming tools.

Settings (cont.)

Configuration

The Configuration setting allows the default controller to be chosen. This controller will then be used whenever a new application is created.



This is useful for OEMs who are creating similar applications and will use the same controller most of the time.