

## Exercise - Connect Through USB

---

### Learning Outcomes

By the completion of this exercise the student will:

- Install M580 USB drivers
- Test the USB connection
- Connect to an M580 via USB

### Equipment Required

To complete this exercise on a PLC, the student will need

- One M580 PLC (any CPU)
- A BMX or BME rack
- A compatible power supply
- A mini USB cable (see picture below)



---

### Install the M580 USB drivers.

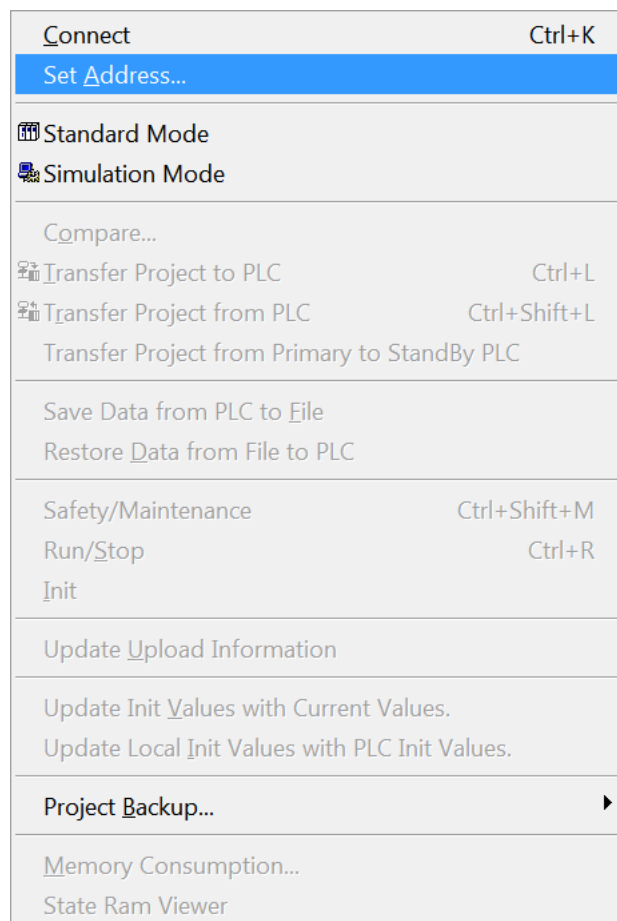
- i. Download the latest Schneider PLC USB driver Suite available on Schneider Electric Website:  
<http://www.schneider-electric.com/download/ww/en>
- ii. Double click the executable to install the drivers.

## Exercise - Connect Through USB (cont.)

---

### Test the USB connection

- i. If not already open, start **Unity Pro**.
- ii. Plug the USB cable into the computer and the PLC.
- iii. In Unity Pro's menu bar, select **PLC » Set Address**



## Exercise - Connect Through USB (cont.)

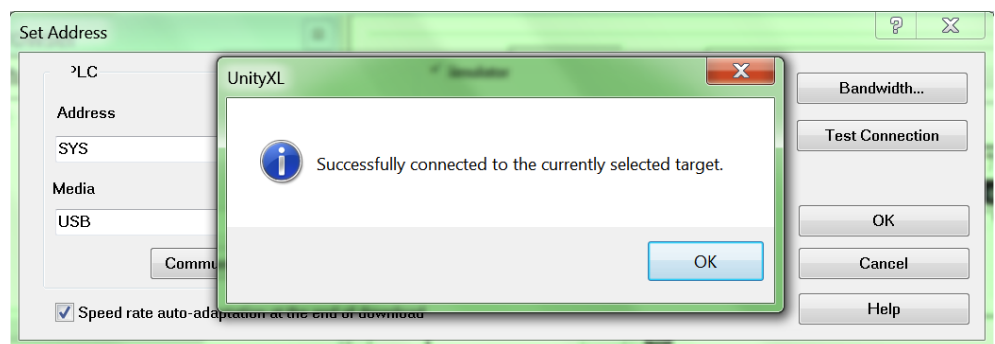
- iv. The **Set Address** window will pop-up:



- v. On the **PLC** side; Select the **Media** as **USB** from the drop down list, and type **SYS** in the **Address** field as shown below:



- vii. Click the Button **Test Connection**. If successful, a message will confirm that the connection is working.



- ix. Close the pop-up and click **OK** to validate the changes.

## Exercise - Connect Through USB (cont.)

### Connect to the PLC

- i. Once the connection has been tested confirm **Standard Mode** operation by viewing the raised **PLC** icon in the Shortcut bar.



- ii. Then click the **Connect** button.



- iii. Note that the **Status** is now **ONLINE**, and the **Media** is **USB**.

