

Exercise - Connect to the Simulation Mode

Learning Outcomes

By the completion of this exercise the student will:

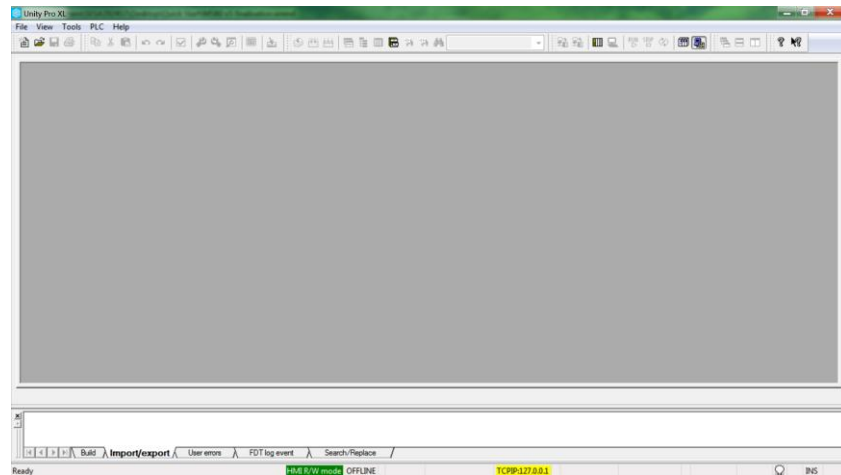
- Connect to an emulated M580

Equipment Required

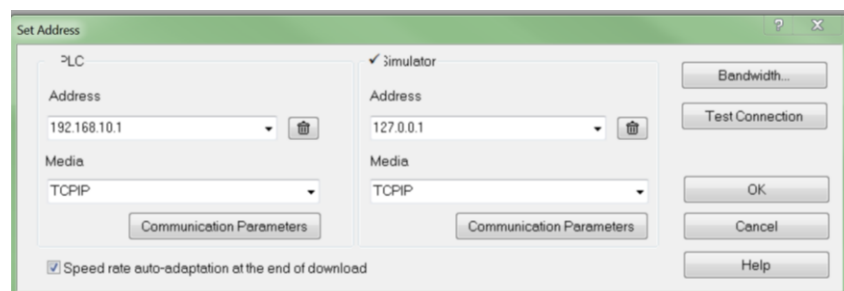
None

Start Unity Pro

- The Unity Pro configuration window will pop-up



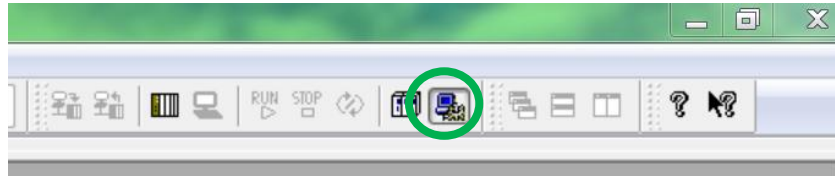
- Select PLC»Set Address then in the newly opened window, under **Simulator**, make sure that the **Media** is TCP/IP and the **Address** is 127.0.0.1.



- Click **OK**.

Exercise - Connect to the Simulation Mode (cont.)

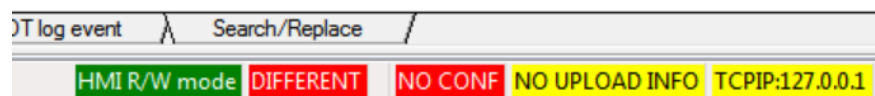
- iv. Select Simulation Mode



- v. Then click **Connect**



- vi. Note that the **OFFLINE** status has been replaced by **DIFFERENT** with a red background.



This means that the project in Unity Pro (which is now empty, as we did not create anything) is different from the one in the **Simulator**.