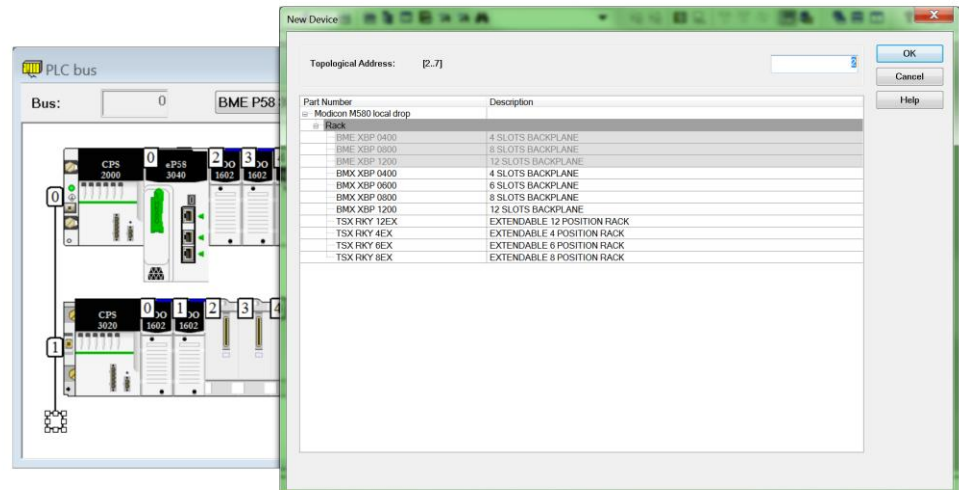


# X80 Extension Racks

## Extension Racks

Just like PIO

Extension racks are based on **X-Bus-only** backplanes and can contain **X-Bus I/O modules only**:



## Extension Rack Rules

- If an Ethernet backplane is used as an **Extension Rack**, Ethernet Modules will **NOT** start as they are not on a **Rack 0**
- Depending on processor performance level, up to **7 Extension Racks** are supported the specifics for each CPU can be checked here: *CPU Selection Overview* (page **Error! Bookmark not defined.**)
- The M580 ePAC will support up to **8 BMX XBP backplanes** (racks) of 4, 6, 8 or 12 slots
- To extend the configuration using additional racks, users must use a bus extender module (**BMX XBE 1000**) and X-bus cables
- The backplane extender will be plugged on the right side dedicated connector of the backplane. It won't occupy any module slot
- The XBE extender module is **NOT** hot-swappable in accordance with M340 existing functionality
- Each backplane has to include a power supply module and can support up to **12** modules depending on the rack type