

Exercise - The Rack Viewer

Learning Outcomes

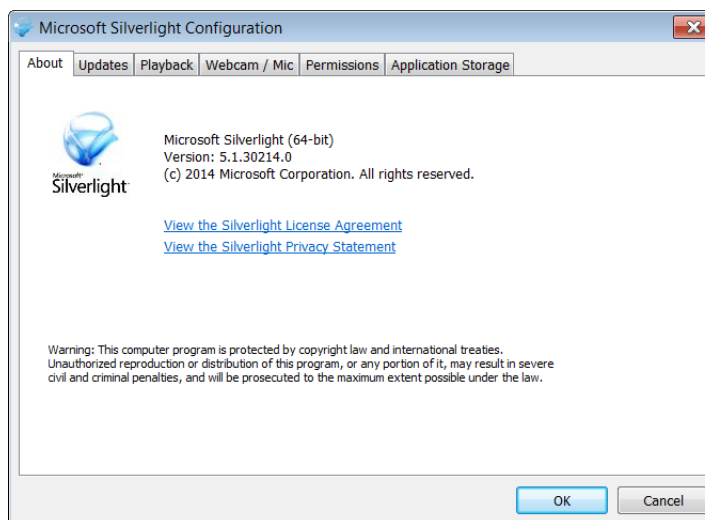
By the completion of this exercise you will:

Use the rack viewer to examine the PAC architecture

2 Ensure that Microsoft Silverlight is installed on the machine.

Click the Windows Start button and enter `Silverlight` into the **Search all Programs and Files** dialog box.

Select **Microsoft Silverlight** from the list.



If Microsoft Silverlight does not appear, or the version is older than V5 then go to <http://www.microsoft.com/silverlight/> and follow the instructions to download and install the latest version.

Open the FactoryCast Web Page in a browser.

Open the Web Browser and enter the address `http://192.168.14.1`.

If the login screen is displayed, enter the following:

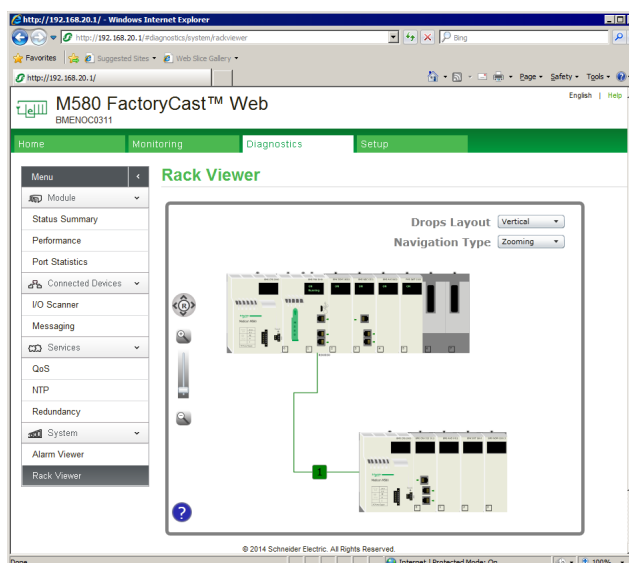
Username: `admin`

Password: `schneider`

Exercise - The Rack Viewer (cont.)

Examine the Rack Viewer

1. Click the **Diagnostics** Tab. Select **Rack Viewer** from the left Menu.



2. Use the zoom buttons, or slider to zoom out to see the complete architecture.



Note:

The mouse wheel can also be used to zoom in and out but only when the Java window has focus.

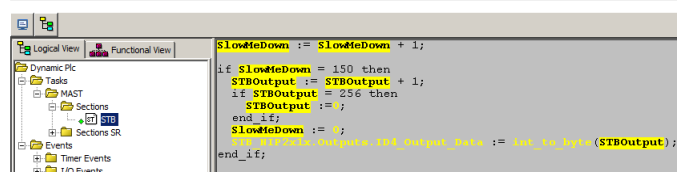
Hover the mouse button over the various modules to identify them.

FactoryCast (cont.)

Program Viewer

The Program Viewer allows sections of the program to be displayed complete with run-time animation similar to Unity Pro.

Program Viewer



The explorer on the left hand side allows the program section to be selected. The animated section of code is then shown in the right hand section. As with Unity Pro, hovering over a variable will show the value of that variable.

The main difference is that the Program Viewer is not able to show the state/value of I/O variables.



Note:

The Program Viewer requires Java Runtime installed on the computer.
