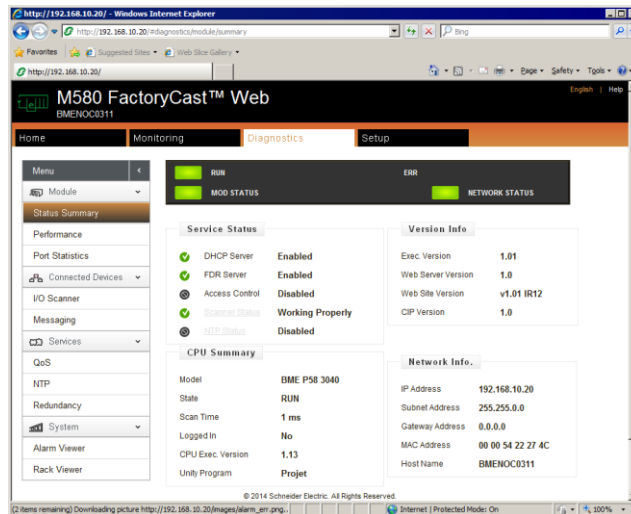


BME NOC Web Services

What are Web Services

Web Services are provided by a Web Server embedded in the BME NOC modules. They provide diagnostic and other information to show the operation of the module. They also give diagnostic information to help with troubleshooting.



See Also:

Web services were examined briefly in the *Exercise - View the CPU Web Pages* (page **Error! Bookmark not defined.**) as the CPU offers similar functionality.

How to access BME NOC Web Services

Web services can be accessed using any Web Browser from a computer on the BME NOC network. Simply enter the address of the BME NOC into the browser's address bar to open the Web Services main web page.

If security is enabled, a username and password will be required to access the Web Server. The default username is 'admin' and the default password is 'factorycast'.

BME NOC Web Services (cont.)

Diagnostics Viewer

The Diagnostic Viewer offers several pages of diagnostic information for the BME NOC. These includes the following:

Module Status

Performance

Port Status

I/O Scanner

Redundancy Status

Alarm Viewer

Rack Viewer

These pages can assist with fault-finding the module or device network. The other pages that are available can assist with more detailed network troubleshooting.

Exercise - BME NOC Web Services

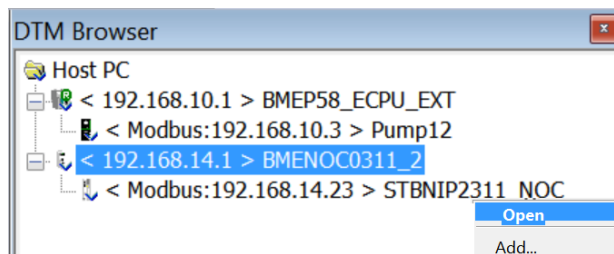
Learning Outcomes

By the completion of this exercise you will:

Access Web Services in the BME NOC

Enable the HTTP connection.

- 1 In the DTM manager in Unity Pro, right-click the **BMENOC0311** and select **Open** from the menu.



- 2 In the browser tree, select Security.
- 3 Drop down the **HTTP** Selection box and choose **Enabled** from the list.
- 4 Build the application and download it to the M580.

Connect to the BME NOC Web Server.

- 1 Connect an Ethernet cable from the **PC** to the **service port** of the BME NOC 0311.
- 2 Open the Web Browser and enter the address `http://192.168.20.1` (where X is the Group number being used).
- 3 If the login screen is displayed, enter the following:

Username: admin

Password: schneider

View the Status Summary

- 1 Click the Diagnostics tab.



- 2 View the information displayed on the Status Summary page.